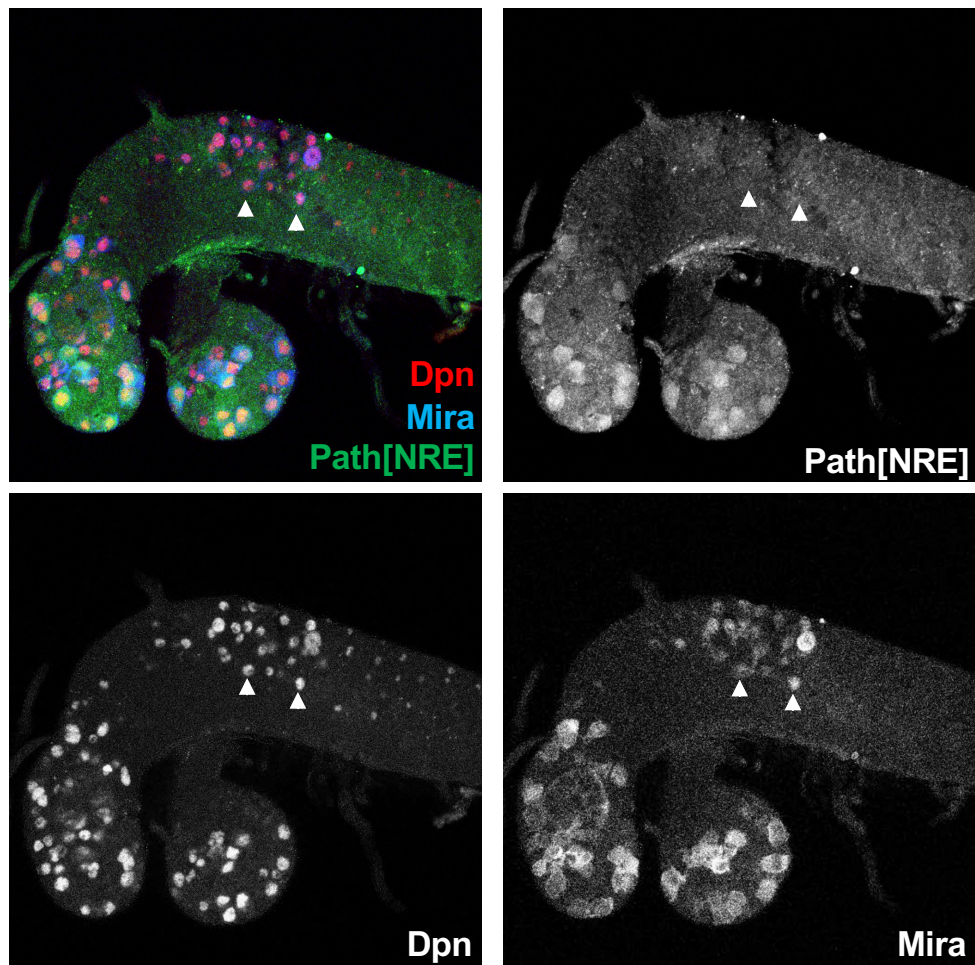


24 hr ALH



Additional Figure S4: Path[NRE] expression is detected in NBs that have exited quiescence. Expression of Path[NRE]-GFP is only detected in a subset of Dpn and Miranda expressing NBS at 24hr ALH. Small quiescent and recently re-activated NBs have not yet initiated expression (e.g. white arrowheads).