

Psychosocial characteristics as potential predictors of suicide in adults: An overview of the evidence with new results from prospective cohort studies

G. David Batty,^a DSc (E. david.batty@ucl.ac.uk)

Mika Kivimäki,^a PhD (E. m.kivimaki@ucl.ac.uk)

Steven Bell,^b PhD (E. scb81@medschl.cam.ac.uk)

Catharine R. Gale,^{c,d} PhD (E. crg@mrc.soton.ac.uk)

Martin Shipley,^a MSc (E. martin.shipley@ucl.ac.uk)

Elise Whitley,^e PhD (E. elise.whitley@glasgow.ac.uk)

David Gunnell,^{f,g} DSc (E. d.j.Gunnell@bristol.ac.uk)

^aDepartment of Epidemiology and Public Health, University College London, London, UK

^bDepartment of Public Health and Primary Care, University of Cambridge, Cambridge, UK

^cCentre for Cognitive Ageing & Cognitive Epidemiology, University of Edinburgh, Edinburgh, UK

^dMRC Lifecourse Epidemiology Unit, University of Southampton, Southampton, UK

^eMRC/CSO Social and Public Health Sciences Unit, University of Glasgow, Glasgow, UK

^fSchool of Social and Community Medicine, University of Bristol, Bristol, UK

^gNational Institute of Health Research Biomedical Research Centre at the University Hospitals Bristol NHS Foundation Trust and the University of Bristol, Bristol, UK

Manuscript statistics: 6046 words (excluding abstract 212), 132 references, 1 box, 5 figures, and 4 tables.

Abstract

In this narrative overview of the evidence linking psychosocial factors with future suicide risk, we collect results from published reports of prospective studies with verified suicide events (mortality or, less commonly, hospitalisation) alongside analyses of new data. There is abundant evidence indicating that low socioeconomic position, irrespective of the economic status of the country in question, is associated with an increased risk of suicide, including the suggestion that the recent global economic recession has been responsible for an increase in suicide deaths and, by proxy, attempts. Social isolation, low scores on tests of intelligence, serious mental illness (both particularly strongly), chronic psychological distress, and lower physical stature (a marker of childhood exposures) were also consistently related to elevated suicide rates. Although there is some circumstantial evidence for psychosocial stress, personality disposition, and early life characteristics such as bullying being risk indices for suicide, the general paucity of studies means it is not currently possible to draw clear conclusions about their status. Most suicide intervention strategies have traditionally not explored the modification of psychosocial factors, partly because evidence linking psychosocial factors with suicide risk is, as shown herein, in its infancy, or, where it does exist, for instance for intelligence and personality disposition, the characteristics in question do not appear to be malleable.

Global burden of suicide

While the rate of suicide is declining worldwide, there are around 800,000 deaths from suicide per annum resulting in this behaviour being ranked the 15th leading cause of death.¹ Scrutiny of the frequency of the intentional ending of one's own life by age is striking: suicide is the second most common cause of death in 15-29 year olds, and fifth in people aged 30-49 years.¹ With estimates suggesting that an additional 30-40 attempts on life are made across all age groups (100 in younger people) for every completed suicide in well-resourced countries,² the public health implications of this behaviour are clearly burdensome, equating to more than 20 million attempted suicides per annum worldwide.

Division of suicide rates by epoch, gender, and region is also informative. Time series analyses of suicide deaths in the last 150 years in England and Wales, for instance, confirm that, whereas rates in men and women are at an all-time low, there are striking historical variations (figure 1).³ In men, for instance, the highest rates of completed suicide occurred in 1905 and 1934 (circa Great Depression), with marked declines during the two world wars (1914-18, 1939-45). Subsequently, against a general downward trend, there were some modest increases in the 1950s and 1980s.³

--- insert figure 1 around here please ---

After age-standardisation, a male residing in an affluent country is more than 3.5 times more likely to die by suicide than a female, a differential that is narrower (1.5 times) in resource-poor states. Within the same gender, regional differentials are revealing: for instance, in 2012, women in the poorer countries of South-East Asia (13.9 suicide deaths/100,000) were more than five times more likely to die from suicide relative to economically comparable regions in the Americas (2.7) (figure 2¹). Across country comparison within similarly classified regions also reveals striking mortality differentials.¹

--- insert figure 2 around here please ---

While important in themselves for the quantification of burden, scrutiny of suicide rates by country and time offer important insights into the modifiability and, to an extent, the explicability, of suicide risk, and therefore prevention in principle. Disregarding concerns regarding completeness of suicide death data – likely to be most problematic for suicide relative to other causes of death which do not carry the same degree of social stigma and illegality in certain countries – these rapid fluctuations in suicide risk are most likely to be ascribed to environmental influences (although

gene-environment interactions, yet to be demonstrated, are plausible). Moreover, the downturns in male and female suicide rates during the two world wars, and rises in the 1930s at the time of the Great Depression, coincide with environmental insults or ‘shocks’ that have been replicated in analyses around the global recession of 2008 which itself has been linked to upward inflections in suicide events (see later).

In general, the causes of suicide are poorly understood, particularly when measured alongside chronic diseases such as selected cancers, cardiovascular disease, and diabetes (a diagnosis of which, in themselves, appear to raise suicide risk⁴⁻⁶). Knowledge about an array of risk factors for suicide – social, psychological, behavioural and physiological – should, in principle, enhance our ability to intervene in preventing its occurrence. There is growing evidence that behavioural factors may be related to suicide risk, including poor sleep quality,⁷ ease of accessibility to method (e.g., high lethality pesticides particularly in resource-poor countries),⁸ higher alcohol intake,⁹ and media portrayal of suicide (detrimental *and* protective impacts dependent on depiction¹⁰). Selected physiological risk indices also seem to be associated with completed suicide, such as raised levels of systemic inflammation¹¹ and body weight,^{12;13} and, given its correlation with serotonin, lower blood cholesterol.¹⁴ The purpose of this overview, a version of which features as a book chapter,¹⁵ is to describe the role, if any, of psychological and social characteristics and, in doing so, we focus on those potential psychosocial risk factors most extensively examined to date in relation to suicide risk (alphabetically ordered): cognitive function; early life characteristics; personality type; psychosocial stress; serious mental illness, including chronic psychological distress; social integration; and socioeconomic status. We carried out a scoping review to locate existing studies and, where such findings were scarce or require replication owing to a thin evidence base, we conduct new analyses based on data from various cohort studies: the Health Survey for England,¹⁶ the Scottish Health Survey,¹⁷ the Whitehall I,¹⁸ UK Biobank,¹⁹ and the Swedish Conscripts Study.²⁰ For a summary of the methodologies of these studies, including key instruments, see box 1. We also briefly describe progress in identifying psychosocially orientated interventions for suicide prevention.

--- insert box 1 around here please ---

Challenges in studying suicide aetiology

The study designs utilised in the examination of suicide aetiology are as wide-ranging as the various types of endpoints (see later) – though perhaps no more so than some other fields of research – including ecological, and, at the level of the individual, cross-sectional, case-control, or

psychological autopsy studies. That suicide research also spans an array of scientific disciplines, with investigators taking disparate and sometimes unconventional or opaque approaches to study description and data analyses, rather complicates data interpretation.

With death from suicide (completed suicide) being rare, it is commonplace for study investigators to utilise proxies such as hospital admissions after a suicide attempts,²¹ self-reported suicide attempt,²² informant report²³ – most obviously in the context of psychological autopsy – and suicidal ideation.²⁴⁻²⁶ Psychological autopsy involves collecting all available information on the deceased using a range of approaches: structured interviews with family members, relatives, friends, or attending health care personnel; collating information from health care and psychiatric records, and other documents; and forensic examination. While ideation seems to be used as an intermediate indicator of suicide, prospective evidence linking it to subsequent verified suicide events is modest,²⁷ and the validity of self- and proxy-reported measures of suicidal thoughts and behaviour is unclear²⁸ with some evidence of misreporting.²⁹ Serious mental illness is perhaps the most powerful risk factor for suicide³⁰ and, as such, suicide events accumulate more rapidly in people with such disorders than in samples drawn from the general population. As such, for the majority of studies, investigators have used these proxies of suicide outcome in cohorts of people with a diagnosed psychopathology, although less than one third of people dying by suicide have been under the care of psychiatric services in the previous year with the corresponding figure for lifetime contact being around half.³¹

In this overview therefore, wherever possible, we focus on prospective cohort studies of general population samples – a study design which typically provides stronger evidence of causality than other observational approaches in the context of suicide research – using verified suicide death (completed suicide) or, less commonly, the endpoints of hospital admission/discharge following a suicide attempt. In certain circumstances, completed suicide may approximate to suicide attempts in countries where highly lethal methods are commonly used, such as China and other regions in East Asian where there is a relative ease of access to pesticides. This is analogous to using cancer deaths data to examine aetiology when the malignancy in question has high short-term case fatality (e.g., liver, lung).³² As a caveat to our occasional use of suicide attempts data (sometimes referred to as self-harm, although this broader category includes acts carried out without suicidal intent), it is also the case that the epidemiology of completed suicide differs markedly from that of nonfatal suicidal behaviour, most notably in the distribution by age, gender, and methods utilised.³³ Death certification for suicide has a high level of agreement with other sources of evidence (forensic reports, police reports, toxicological and histological data).³⁴

Psychosocial factors and suicide risk

Cognitive function

More than 60 years ago, Rook,³⁵ originally concerned with his hypothesis that physical exertion may be cardio-detrimental, explored causes of death extracted from records routinely kept on Cambridge University alumni. He retrospectively defined sportsmen, his exposed group, as male students with the apparent sporting distinction of representing their university against the traditional rivals of Oxford University; intellectuals were denoted by a distinguished performance in their final undergraduate degree examination; and a random control group was rather unfortunately characterised as “...men who have been at the university under survey and had not distinguished themselves sufficiently either academically or as sportsmen...”. On finding that intellectuals were more prone to suicide than other group, in subsequently adopted a more refined study design, Rook noted higher rates of suicide mortality in alumni from various higher education institutions in the UK and the US relative to people of comparable age taken from the census of the general population of England and Wales.³⁶ More recently, investigators on ecological studies have reported positive correlations between average country-specific scores on standard written intelligence tests and suicide rates.^{37;38} While ecological studies may have an important function in the study of suicide – along with natural experiments they may be the only means to examine the impact of population-level exposures – they are nonetheless subject to the concern that group levels results cannot be necessarily extrapolated to the individual – referred to as the ecological fallacy.

Perhaps the most useful contribution to this area has been individual-level cohort studies from Sweden and Denmark which are based on routinely collected cognition data from school or military records. Participants are then linked to cause of death registries and hospital records using the personal identification number. With follow-up spanning late adolescence through to middle-age, one of the lifetime peak periods for the occurrence of suicide is captured and, by the standards of most sample sizes in suicide epidemiology, studies are unusually well powered. Taken together, results from these studies indicate that cognitive function is negatively associated with suicide risk, whereby higher performing school pupils³⁹ and young adults who completed IQ tests prior to entry to the military^{20;40} experience a markedly lower risk of completed and attempted suicide up to three decades later. In figure 3 we show the results of new analyses of data from an earlier publication²⁰ which demonstrate a stepwise relation for suicide hospitalisations across the full IQ range. Of note is the absence of any threshold effect, for instance around average intelligence. The effects estimate in the lowest IQ group, which approaches 10, is of a magnitude rarely seen in modern epidemiology. The strength of this relation implies causality, although in a smaller scale study,

control for childhood educational performance, potentially an indicator of life opportunities, resulted in a null cognition–suicide correlation.³⁹

--- insert figure 3 around here please ---

Plausible explanations for these IQ-suicide relationships have been outlined.⁴⁰ Low IQ in early life consistently correlates with poor social circumstances⁴¹ and less favourable health behaviours⁴²⁻⁴⁴ many decades later. Adjustment for these potential covariates, where available, tends to lead to only modest degrees of attenuation in the effect sizes. Adversity in childhood, other than purely socioeconomic, may also affect IQ or academic performance and future suicide risk. For instance, children exposed to violence, either directly as victims or indirectly as witnesses, typically display lower levels of cognitive function.⁴⁵ Exposure to violence in childhood has also been reported to increase the risk of suicide ideation or attempts later in life.⁴⁶ Although currently speculative, these relations may contribute to associations between IQ and attempted suicide. Perhaps most convincingly, people with lower IQ scores may have lesser problem solving abilities and, in times of crisis, be less well equipped to identify practical solutions to their perceived circumstances.⁴⁰ That analyses of the four IQ subtests available in the Swedish conscripts cohort reveal that associations with the logical (problem solving) subscale were strongest offers some support for this suggestion.²⁰ Findings from studies of children also indicate that higher cognitive ability is associated with a greater internal locus of control⁴⁷ which may lead to lower occurrence of suicidal behaviour.⁴⁸

Early life characteristics

At first impression perhaps regarded as a rather eccentric characteristic to study, physical stature peaks around 18 years of age and has utility as a ‘record’ of, amongst other early life insults, chronic illness, socioeconomic disadvantage, sub-optimal nutrition, and psychosocial stress.⁴⁹ Used for many years in the fields of economic history, anthropology, and anthropometry, its value in epidemiology has arisen from the paucity of longitudinal studies which hold data on prospective collection of these pre-adult factors alongside chronic disease outcomes in older people.^{49;50}

A 10 year follow-up of participants in the first Whitehall study of male, London-based non-industrial government workers was amongst the earlier height–mortality studies.⁵¹ In this early period of mortality surveillance there was an insufficient number of suicide deaths for meaningful analysis, but we have revisited this issue some decades on. We present our results from this cohort of 17,955 men in whom there were 81 deaths ascribed to intentional or undetermined suicide in

table 1 where a graded relationship with height is shown. In new analyses of a group of Swedish conscripts in which the outcome of interest was originally suicide mortality, using hospitalisation following suicide⁵² there was a clear stepwise effect, whereby the shorter study members experienced the greatest risk (figure 4). Taken together with the existing literature, there is consistent evidence of an inverse association with taller people experiencing lower suicide rates which accords with the findings of most,⁵³⁻⁵⁷ if not all,⁵⁸ published studies.

-- insert table 1 here please --

With shorter stature *per se* very unlikely in itself to be a risk factor for suicide, it is plausible that the characteristics that it proxies are the likely risk indices, including birth characteristics (weight, post-natal growth, birth order), nutrition, illness, psychosocial stress, bullying, and social disadvantage, amongst others.⁴⁹ Aside from its links with height, however, there are several other reasons to implicate early life characteristics in the development of suicide. First, with suicide, unlike most physical chronic diseases, having a rise in incidence in early adulthood – most notably in men – it is inevitable that some of the causal processes leading to such events occur in childhood. This is not, however, to diminish the importance of life events that may precipitate suicide in later adulthood, such as relationship breakdown, job loss, and financial debt. Second, the occurrence of suicide in adult life does not appear to be fully explained by contemporaneously measured risk factors.⁵⁹ Third, some of the known or potential adult risk indices for suicide – poverty,⁶⁰ psychological distress,⁶¹ personality type,⁶² low cognition⁶³ – tend to ‘track’ across the life course such that children with unfavourable levels of these characteristics are more likely to become adults with unfavourable levels.

-- insert figure 4 here please --

In this context, considering social circumstances or adversity more broadly, investigators have prospectively examined the predictive capacity of parental socioeconomic disadvantage, lower performance on cognitive testing, psychological distress, death of one or both parents from suicide and other causes, parental separation, periods spent in public care, and bullying.^{64;65} Birth cohort studies, provided samples are sufficiently large, have the potential to explore these relationships, and the 1958 birth cohort study (NCDS)⁶⁶ is unusually well placed in this regard. In that study, fifty years of mortality surveillance revealed relations of suicide with a series of psychosocial factors, including higher birth order (potentially a proxy for attention lavished, bullying by older siblings, maternal depression which is more common in second and third pregnancies), poor daytime bladder

control after 3 years of age, internalising and externalising behaviours, a father in a manual occupational social class, parental loss, neglected appearance and contact with social services that might extend to institutionalised care. Selected analyses were, however underpowered, as evidence by the wide confidence intervals, and the absence of an IQ–suicide link in this study does not accord with findings from larger cohort studies.^{20;40}

The predictive capacity of childhood bullying for later life suicide is becoming increasingly well explored. While being the victim of bullying, as opposed to being the perpetrator, seems to be related to a higher risk of subsequent self-reported suicide, planning and ideation,⁶⁷ as discussed, the validity of these endpoints is uncertain, and recall of pre-adult victimisation in cross-sectional studies of older adults raises further concern regarding the accuracy of this information. In the few prospective birth cohort studies with verified suicide outcomes, being a victim of bullying appears to confer an elevated risk in a sample drawn from the UK,⁶⁴ while in a Finnish study this effect was lost after multiple adjustment for related risk indices for men who, as boys, had been bullied, but held for women.⁶⁸

Personality type

As with many of the potential suicide risk factors featured in this review, personality disposition has most commonly been related to total mortality, cardiovascular disease, cancer,⁶⁹ and, more recently, mental health.⁷⁰ In the context of suicide research, impulsivity is perhaps the personality disposition most frequently theorised as being linked to suicide risk.⁷¹ While early studies of personality type used unvalidated assessment tools, results are nonetheless intriguing and bear description. In a 13 year follow-up of 50,465 Swedish men who had been conscripted into military service (women were not required to participate), on the basis of questionnaires response and an interview with a trained psychologist, those with poor emotional control, which is akin to high impulsivity, and lower social immaturity at around 18 years of age experienced an increased risk of subsequent completed suicide.⁷² In extended follow-up of Harvard University alumni, those men who reported frequent periods of feeling particularly self-conscious were, based on our own computation of the results presented in that paper, seemingly four times more likely to experience death from suicide than those who had no such feelings.⁷³ For context, similar results were apparent when self-report of physician-diagnosed depression was the outcome of interest.

In table 2 we describe four cohort studies, identified through our scoping review, in which investigators have utilised standard, validated personality questionnaires – the Eysenck or Minnesota Multiphasic Personality Inventory – to quantify associations of suicide or suicide

attempts with one or more of what are now regarded as the major personality traits: conscientiousness, agreeableness, neuroticism, openness and extraversion.⁷⁴ No single study explored the impact of all 5 personality dispositions: two assessed extraversion/introversion^{75 76} and three measured neuroticism.^{22;75;77} However, in two of these studies,^{22;77} the suicide outcome was based on self-report – included here for the purposes of completeness – which raises the usual concerns regarding validity. In the only study with verified suicide outcomes, a score of ≥ 9 on the neuroticism subscale from the Eysenck questionnaire was associated with a more than doubling of the risk of suicide mortality in a Japanese general population (hazard ratio; 95% confidence interval: 2.39; 1.37, 4.18), even after statistical control for a range of covariates.⁷⁵ Using the same thresholds to denote extraversion, results were less convincing and statistical significance at conventional levels was not apparent (1.37; 0.74, 2.56). In that study, despite the novelty of these results on the full cohort, the primary aim of the authors was to ascertain if the personality–suicide relation was modified by the financial crisis in Japan. Partitioning follow-up at 1998 when this environmental shock began in Japan, the authors speculated that neurotic individuals would be most prone to its impact in following ten years of mortality surveillance relative the preceding eight. This was supported by their analyses showing that, compared with the lowest category, the hazard ratios for the highest neuroticism group increased from 0.66 (0.13; 3.37) to 2.45 (1.26; 4.74) during this period.⁷⁵

--- insert table 2 around here please ---

Given the dearth of studies that have been used to investigate the association of different personality types with completed suicide, we carried out new analyses using the UK Biobank study. We found that neuroticism measured using the 12-item Eysenck Personality Questionnaire-Revised Short Form – the only personality disposition captured in the study – was positively related to suicide risk (age- and sex-adjusted hazard ratio per one standard deviation increase; 95% confidence interval: 1.72; 1.36, 2.19) (table 3). The mechanisms that may explain the link between neuroticism and completed suicide are currently unclear. One possibility is people displaying higher levels of neuroticism are more likely to be vulnerable to the depression-inducing effect of stressful life events than those with lower levels of neuroticism.⁷⁸ Expressed differently, and as outlined above, lower levels of neuroticism may buffer the impact of adverse psychological experiences. More evidence in this field would add clarity. In particular, the extent to which these personality traits may simply be a reflection of poor mental health is moot.

--- insert table 3 around here please ---

Psychosocial stress

Psychosocial stress, which may be a precipitant of psychological *distress*, has been most well explored in the context of chronic disease endpoints, particularly cardiovascular disease.⁷⁹ We were able to identify four prospective cohort studies with suicide as an outcome (table 4). The two studies offering the greatest number of suicide cases utilised unvalidated questionnaire assessment of stress at home only⁸⁰ or both home and work.⁸¹ Each found a ‘U’-shaped relationship whereby both higher and lower levels of stress was associated with the greatest risk of study members taking their own lives, while moderate levels were linked to the lowest rates. In the two other studies, investigators used either the Karasek questionnaire⁸² or a derivation of it⁸³ to quantify job-related psychosocial stress. In doing so, in a Japanese population, there was a suggestion that low job control was associated with a four-fold elevation in suicide risk, with no apparent effect for job demand,⁸³ while in German workers, after deriving a job strain index by dividing job demand by job control – higher scores are regarded as being disadvantageous – there was no indication of a relation with completed suicide.⁸²

--- insert table 4 around here please ---

Serious mental illness and chronic psychological distress

Using people institutionalised in New York City care facilities for treatment of serious mental disorders as an ‘exposed’ group, by comparison with rates in the general populations, Malzberg, a psychiatrist, in a series of articles over 80 years ago, was able to examine the relation of serious mental disorders and mortality risk.^{84;85} He estimated that these patients had a life expectancy, on average, 14 to 18 years shorter than their counterparts in the general population who are largely free of such conditions. Current estimates suggest this differential may be increasing.^{86;87}

Data from numerous cohort studies – often constructed using data linkage – have been used to examine the relation of serious mental disorders, collectively and individually, with suicide mortality. Unsurprisingly, the magnitude of the effect estimates vary markedly by setting (primary care cohorts, hospitalised patients) and the diagnosis of mental disorder. Thus, hazard ratios for mental health problems in people being treated in the community via their general practitioners⁶ are lower than for institutionalised patients.³⁰ While around a doubling in risk of taking one’s own life is evident in people with post-traumatic stress disorder, individuals with borderline personality disorder experience a more than 10-fold increase.^{30 88} with some meta-analyses suggesting this figure may be as high as an unlikely 50 times.⁸⁹ Even the more moderate estimates are large effects

by modern day standards and approximate, for instance, to those described for smoking and lung cancer.⁹⁰

While such effect estimates suggest that the relation between serious mental disorder and suicide may be causal – control for unmeasured or unknown confounding variables is unlikely to explain the magnitude of such relationships – with serious mental disorders being comparatively rare, population impact, the product of the prevalence of the exposure and the hazard ratio, is likely to be lower than, for instance, physical inactivity and heart disease, or smoking and lung cancer. In new analyses, we therefore examined whether suicide risk was also elevated for commonly occurring but less severe mental health problems as denoted by chronic psychological distress. Also termed common mental disorder, psychological distress is a combination of depression and anxiety and should not, as is often the case, be confused with psychosocial *stress* (described earlier) as has been the case.^{91:92} In UK Biobank, study members self-declared whether they had ever been under the care of a psychiatrist – in the UK National Health Service, this would ordinarily have followed referral by a general practitioner in a country in which private health care is rare, as opposed to self-referral. Participants also completed the four item Patient Health Questionnaire (PHQ-4) scale of psychological distress, scores from which were categorised into three groups (low (score: 0), moderate (1–2), high (≥ 3), with a higher value denoting greater severity of distress. As shown in table 3, in around 500,000 people in this study in whom 6 years of follow-up gave rise to 98 suicide deaths, consistent with existing evidence, serious mental disorder at some point in the life course was associated with a 6-fold increased risk of suicide (5.82; 3.90, 8.70). There was also around a doubling of suicide risk in study members reporting symptoms of moderate-to-severe distress, though intermediate levels were unrelated. In better powered studies, including an individual participant data meta-analysis of data from the Health Surveys of England and Scottish Health Surveys, graded effects across the full distress continuum have been seen.⁹³

Multiple mechanisms have been advanced to explain the link between psychological distress and suicide risk, including direct (biological), indirect (behavioural) pathways plus their interaction, and a discussion of them would perhaps warrant a separate review in its own right. This notwithstanding, distress may lead to alcohol abuse and depression; and alcohol use itself may disinhibit, raise levels of impulsivity and/or impair the cognitive processes that may lead to the initiation of a suicide attempt. Speculation about mechanisms aside, these findings raise the question whether health care professionals should pay attention to suicide risk at distress levels lower than current recommendations suggest.

Social integration

While the first empirical examination of a relationship between a low number of friends and suicide risk was probably first undertaken three decades ago⁷² – using a subgroup of participants from the Swedish Conscripts study (box 1) – the majority of the work in this area has utilised marital status as a proxy for social support. The consistent observation is that people who were married or cohabited at study baseline are less likely to subsequently take their own lives relative to people who live alone or the unmarried.^{14;94} In those studies well-powered enough to stratify by gender, effects appeared to be confined to men.^{95 96} This observation accords somewhat with new analyses herein based on a pooling of data for men and women from the Health Survey for England and the Scottish Health Survey (figure 5), and in the all-male original Whitehall cohort study (table 1). In these analyses, however, we were insufficiently powered to explore gender-specific effects in those cohort studies and also unable to distinguish between the type of union or cohabitation. In a rare example of a study that did, utilising routinely collected data from Scandinavia⁹⁷, with opposite-sex married persons as the referent category, there was a raised risk of total mortality for same-sex married women (hazard ratio; 95% confidence interval: 1.89; 1.60, 2.23), that was largely generated by strong relationships for suicide (6.40; 3.42, 12.00). Similar observations were made in men. Explanations for these results include parental rejection and societal stigmatisation of people in same-sex unions.

--- insert figure 5 around here please ---

Recognising that marital status and cohabitation fail to fully capture social integration, Tsai and others^{98;99} utilised a composite measure based on a seven item index first developed by Berkman¹⁰⁰ that, in addition to marital/cohabitation status, also incorporated social network size, frequency of contact, religious participation, and involvement in other social groups. Set within an unusually large bespoke occupational cohort study from the US (as opposed to one generated purely from data linkage) which provided a high number of suicide deaths to facilitate analyses, and based on over two decades of mortality surveillance, the authors found that men who were socially well-integrated had around half the risk of suicide relative to those who were less well connected.⁹⁸ Of the individual elements of the derived index for social integration, marital status (again), social network size, and religious service attendance seemed to be generating the association with suicide. The lack of availability of baseline data on mental health – mental illness may impair the building of a support network¹⁰¹ or be detrimental to its maintenance, and people with mental health problems, as described, experience an elevated rate of suicide³⁰ – was addressed by the same authors in a separate study of women where similar patterns of association appeared to hold.⁹⁹

Socioeconomic status

Socioeconomic circumstances are denoted by an array of characteristics including, at the level of the individual, occupational social class (most common in studies of UK populations), education, income, and race (more common in studies of US populations), and at the area or group level, neighbourhood deprivation.¹⁰² Epidemiologists tend to use the collective terms socioeconomic status or socioeconomic position, while social scientists often refer to social class even when not referring to occupation *per se*. When using occupation as an indicator of socioeconomic status, interpretation of the relationship with suicide is to an extent complicated by access to lethal means across different professions that are perhaps not socially patterned. For instance, it would seem likely that farmers have ready access to firearms, and physicians to potentially lethal medicines.

The study of the link between socioeconomic status and suicide was probably first initiated by Morselli,¹⁰³ followed by Emile Durkheim in the 19th century,¹⁰⁴ Cavan in 1920s Chicago¹⁰⁵ and latterly Sainsbury in London.¹⁰⁶ In a recent systematic review of studies utilising various research designs, drawing on clinical and non-clinical populations, people with a lower income, a more basic education, or a less prestigious occupation have around a doubling of suicide risk with weaker associations apparent in women.¹⁰⁷ Results appearing subsequently provide support for these associations,^{14;108} as do the findings of our own analyses of new data based on an individual-participant meta-analysis of the Health Surveys for England and the Scottish Health Survey (figure 5) where higher occupational social class and education were related to lower suicide rates, although statistical significance at conventional levels was not always apparent. While higher employment grade in the Whitehall I study appeared to show some protection against suicide (table 1), the magnitude of the relationship was modest.

Although rates of male suicide are somewhat lower in resource-poor countries, owing to greater populations numbers, the absolute occurrence is higher such that countries in this group account for three-quarters of all suicide deaths worldwide.¹ In reviews focusing on studies set in these societies, alternative markers of socio-economic position are necessarily utilised (e.g., asset ownership, quality of household construction), yet similar patterns of association are seen: lower socioeconomic position is typically associated with elevated suicide risk and these effects seem to hold whether intermediate (suicidal ideation, behaviour) or endpoint (deaths from suicide) indicators are the outcomes of interest.^{109;110}

In contrast to other health outcomes such as chronic disease – most obviously cardiovascular disease¹¹¹ and cancer – for suicide, the time between exposure and outcome may be much shorter because suicide is a behaviour rather than a chronic disease process, and some exposures, such as job loss and relationship breakdown, have acute effects on psychological distress. For instance, expressed simplistically, rapid onset of acute financial hardship or relationship breakdown may precipitate mental health problems which subsequently give rise to suicide. In this context, the impact on suicide risk of the recent worldwide economic crises can be examined by using a time series approach where death rates are compared pre- and post-economic downturn. Based on such data, following the global economic shock of 2008, as evidenced by rises in unemployment, debt and home repossessions, there was profound impact on economies in multiple nations only previously seen during the Great Depressions of the 1920s and 1930s. Relative to expectations had prior mortality trends continued, there was a suggestion of marked elevations in rates of death from suicide.^{112;113} Estimates in the UK attribute 1000 suicide deaths to the recession^{33;114} which, based on the multiplier used earlier, would equate to an additional 30-40,000 attempts on life. Stratification of data by age show that peri-recession, young people experienced particularly high levels of job losses and unemployment suggesting a potential for greater suicide risk in this group. Cross-national studies reveal the apparent impact of recession on suicide rates varies by location.¹¹² While these country-to-country differentials are partially ascribed to a heterogeneity in levels of recession and associated unemployment, they are also likely to be due to variation in the systems in place to buffer the influence of a recession, including composition of existing welfare systems (e.g., more favourable unemployment benefits), investment in active labour market programmes (e.g., job search assistance, apprenticeships, subsidised employment), and, more generally, a rapid response at a policy level which aim to support those affected by recession.¹¹⁵ Of note, during the same period that rates of people killing themselves increased, there was a decline in road traffic accidents.¹¹⁵ This was presumably because avoidance of car use owing to running costs, repossession of existing vehicles, or there being fewer heavy goods vehicles on the road.

Suicide prevention in the context of psychosocial risk factors

Most of the interventions for effective suicide reduction do not focus on psychosocial factors, partly because evidence linking psychosocial factors with suicide risk is, as we have demonstrated herein, in its infancy, or, where it does exist (e.g., cognition, personality type), selected factors are not readily modifiable. Out with the sphere of psychosocial factors, there is reasonable evidence for suicide prevention via method restriction (access to means), including state-level regulation of firearms and pesticides,¹¹⁶ but also access to ‘hot spots’ such as bridges, buildings, and railway lines;¹¹⁷ ‘gatekeeper’ training, whereby lay and professional people receive brief training in the

warning signs of a suicide and how to react;^{118;119} liaison with the media;¹²⁰ and, based on ecological evidence, state-initiated declines in alcohol consumption.¹²¹

Of more relevance to the psychosocial factors outlined herein, suicide prevention strategies have attempted to promote awareness in all strata of society, with the aim of reducing factors that increase risk, such as social isolation, mental health problems, and increasing factors that promote resilience or coping, such as individual, family, and community connectedness. Evaluated interventions include: school-based suicide awareness programmes where the quality of most studies does not permit clear conclusions;¹²² cognitive behavioural therapy in reducing recurrence of self-harm, though impacts on suicide are unclear;¹²³ antidepressant drug treatment whereby protection against suicide seems to be apparent in older adults, with a reverse gradient apparent in younger people;¹²⁴ measures to prevent bullying;¹²⁵ and social welfare measures to provide better support to populations experiencing financial hardship such as recession and job loss.^{126;127}

Conclusions and future research directions

Examination of the relation of psychosocial risk factors with suicide is hampered by a series of issues. A low number of cases in published studies is commonplace, and the risk factor data collected are also often of modest or little utility in suicide research. Thus, the better powered studies, which are typically derived from data linkage, while having ample suicide events, are insufficiently well characterised for potential risk indices; the reverse is true of birth cohort studies.

The context of the research may have an impact on the association of psychosocial characteristics and suicide risk, at least for those risk factors which are not causally linked with the taking of life. Thus, this relationship may vary by epoch, country, economic development, or cultural setting. The utilization of data from these different contexts where potential risk factors have different confounding structures¹²⁸ may be particularly helpful.

These points notwithstanding, in the present overview, the strength of the evidence of an association of selected psychosocial factors with suicide was variable. There is good evidence for low socioeconomic status (including job loss and debt), poor cognition (striking effects in Swedish conscripts), and mental illness/psychological distress. The role of personality type, psychosocial stress, and pre-adult factors, aside from height, such as bullying is less clear. Further, while these risk factors may have some utility in offering insights into suicide aetiology, not all are of value to suicide prevention, either because they are markers of other characteristics (e.g., height) or do not lend themselves to modification (e.g., cognitive function, personality type) – although the latter may

have value in high risk (targeted) approaches to suicide prevention. Other potential risk factors, such as poverty, social isolation, and mental health are already firmly on the policy agenda either because they are important health entities in their own right, or they have been linked with other health outcome (poverty and life expectancy; social isolation and dementia).

References

- (1) WHO. Preventing suicide: A global imperative. Geneva: World Health Organization; 2014.
- (2) Harris EC, Barraclough B. Excess mortality of mental disorder. *Br J Psychiatry* 1998; 173:11-53.
- (3) Thomas K, Gunnell D. Suicide in England and Wales 1861-2007: a time-trends analysis. *Int J Epidemiol* 2010; 39(6):1464-1475.
- (4) Batty GD, Kivimaki M, Park IS, Jee SH. Diabetes and raised blood glucose as risk factors for future suicide: cohort study of 1 234 927 Korean men and women. *J Epidemiol Community Health* 2012; 66(7):650-652.
- (5) Fang F, Fall K, Mittleman MA, Sparen P, Ye W, Adami HO et al. Suicide and cardiovascular death after a cancer diagnosis. *N Engl J Med* 2012; 366(14):1310-1318.
- (6) Webb RT, Kontopantelis E, Doran T, Qin P, Creed F, Kapur N. Suicide risk in primary care patients with major physical diseases: a case-control study. *Arch Gen Psychiatry* 2012; 69(3):256-264.
- (7) Gunnell D, Chang SS, Tsai MK, Tsao CK, Wen CP. Sleep and suicide: an analysis of a cohort of 394,000 Taiwanese adults. *Soc Psychiatry Psychiatr Epidemiol* 2013; 48(9):1457-1465.
- (8) Mew EJ, Padmanathan P, Konradsen F, Eddleston M, Chang SS, Phillips MR et al. The global burden of fatal self-poisoning with pesticides 2006-15: Systematic review. *J Affect Disord* 2017; 219:93-104.
- (9) Schneider B, Baumert J, Schneider A, Marten-Mittag B, Meisinger C, Erazo N et al. The effect of risky alcohol use and smoking on suicide risk: findings from the German MONICA/KORA-Augsburg Cohort Study. *Soc Psychiatry Psychiatr Epidemiol* 2011; 46(11):1127-1132.
- (10) Sisask M, Varnik A. Media roles in suicide prevention: a systematic review. *Int J Environ Res Public Health* 2012; 9(1):123-138.
- (11) Batty GD, Bell S, Stamatakis E, Kivimaki M. Association of Systemic Inflammation With Risk of Completed Suicide in the General Population. *JAMA Psychiatry* 2016; 73(9):993-995.
- (12) Magnusson PK, Rasmussen F, Lawlor DA, Tynelius P, Gunnell D. Association of body mass index with suicide mortality: a prospective cohort study of more than one million men. *Am J Epidemiol* 2006; 163(1):1-8.
- (13) Batty GD, Whitley E, Kivimaki M, Tynelius P, Rasmussen F. Body mass index and attempted suicide: Cohort study of 1,133,019 Swedish men. *Am J Epidemiol* 2010; 172(8):890-899.
- (14) Jee SH, Kivimaki M, Kang HC, Park IS, Samet JM, Batty GD. Cardiovascular disease risk factors in relation to suicide mortality in Asia: prospective cohort study of over one million Korean men and women. *Eur Heart J* 2011; 32(22):2773-2780.
- (15) Batty GD, Kivimaki M, Bell S, Gale C, Shipley M, Whitley E et al. Psychosocial characteristics and suicide risk in adults: an overview with new results. In: Kivimaki M, Batty GD, Kawachi I, Steptoe A, editors. *Handbook of Psychosocial Epidemiology*. Oxford: Routledge; 2018.
- (16) Mindell J, Biddulph JP, Hirani V, Stamatakis E, Craig R, Nunn S et al. Cohort profile: the health survey for England. *Int J Epidemiol* 2012; 41(6):1585-1593.
- (17) Gray L, Batty GD, Craig P, Stewart C, Whyte B, Finlayson A et al. Cohort profile: the Scottish health surveys cohort: linkage of study participants to routinely collected records for mortality, hospital discharge, cancer and offspring birth characteristics in three nationwide studies. *Int J Epidemiol* 2010; 39(2):345-350.

- (18) Reid DD, Hamilton PJS, McCartney P, Rose G, Jarrett RJ, Keen H et al. Cardiorespiratory disease and diabetes among middle-aged male civil servants. *Lancet* 1974; i:469-473.
- (19) Sudlow C, Gallacher J, Allen N, Beral V, Burton P, Danesh J et al. UK biobank: an open access resource for identifying the causes of a wide range of complex diseases of middle and old age. *PLoS Med* 2015; 12(3):e1001779.
- (20) Batty GD, Whitley E, Deary IJ, Gale CR, Tynelius P, Rasmussen F. Psychosis alters association between IQ and future risk of attempted suicide: cohort study of 1,109,475 Swedish men. *BMJ* 2010; 340:c2506.
- (21) Mittendorfer-Rutz E, Rasmussen F, Wasserman D. Restricted fetal growth and adverse maternal psychosocial and socioeconomic conditions as risk factors for suicidal behaviour of offspring: a cohort study. *Lancet* 2004; 364(9440):1135-1140.
- (22) Fergusson DM, Beautrais AL, Horwood LJ. Vulnerability and resiliency to suicidal behaviours in young people. *Psychol Med* 2003; 33(1):61-73.
- (23) Phillips MR, Yang G, Zhang Y, Wang L, Ji H, Zhou M. Risk factors for suicide in China: a national case-control psychological autopsy study. *Lancet* 2002; 360(9347):1728-1736.
- (24) Geulayov G, Metcalfe C, Heron J, Kidger J, Gunnell D. Parental suicide attempt and offspring self-harm and suicidal thoughts: Results from the Avon Longitudinal Study of Parents and Children (ALSPAC) birth cohort. *J Am Acad Child Adolesc Psychiatry* 2014; 53(5):509-517.
- (25) Strandheim A, Bjerkeset O, Gunnell D, Bjornelv S, Holmen TL, Bentzen N. Risk factors for suicidal thoughts in adolescence--a prospective cohort study: the Young-HUNT study. *BMJ Open* 2014; 4(8):e005867.
- (26) Kidger J, Heron J, Lewis G, Evans J, Gunnell D. Adolescent self-harm and suicidal thoughts in the ALSPAC cohort: a self-report survey in England. *BMC Psychiatry* 2012; 12:69.
- (27) Beghi M, Rosenbaum JF, Cerri C, Cornaggia CM. Risk factors for fatal and nonfatal repetition of suicide attempts: a literature review. *Neuropsychiatr Dis Treat* 2013; 9:1725-1736.
- (28) McMahon EM, Keeley H, Cannon M, Arensman E, Perry IJ, Clarke M et al. The iceberg of suicide and self-harm in Irish adolescents: a population-based study. *Soc Psychiatry Psychiatr Epidemiol* 2014; 49(12):1929-1935.
- (29) Mars B, Cornish R, Heron J, Boyd A, Crane C, Hawton K et al. Using Data Linkage to Investigate Inconsistent Reporting of Self-Harm and Questionnaire Non-Response. *Arch Suicide Res* 2016; 20(2):113-141.
- (30) Chesney E, Goodwin GM, Fazel S. Risks of all-cause and suicide mortality in mental disorders: a meta-review. *World Psychiatry* 2014; 13(2):153-160.
- (31) Appleby L, Kapur N, Shaw J, Hunt IM, Flynn S, Ibrahim S et al. The National Confidential Inquiry into Suicide and Homicide by People with Mental Illness. Making Mental Health Care Safer: Annual Report and 20-year Review. Manchester: University of Manchester; 2016.
- (32) Allemani C, Weir HK, Carreira H, Harewood R, Spika D, Wang XS et al. Global surveillance of cancer survival 1995-2009: analysis of individual data for 25,676,887 patients from 279 population-based registries in 67 countries (CONCORD-2). *Lancet* 2015; 385(9972):977-1010.
- (33) Gunnell D. A Population Health Perspective on Suicide Research and Prevention. *Crisis* 2015; 36(3):155-160.
- (34) Allebeck P, Allgulander C, Henningsohn L, Jakobsson SW. Causes of death in a cohort of 50,465 young men--validity of recorded suicide as underlying cause of death. *Scand J Soc Med* 1991; 19(4):242-247.
- (35) Rook A. An investigation into the longevity of Cambridge sportsmen. *British Medical Journal* 1954; 1:773-777.
- (36) Rook A. Student suicides. *Br Med J* 1959; 1(5122):599-603.

- (37) Voracek M. National intelligence and suicide rate: an ecological study of 85 countries. *Personality & Individual Differences* 2004; 37:543-553.
- (38) Voracek M. National intelligence, suicide rate in the elderly, and a threshold intelligence for suicidality: an ecological study of 48 Eurasian countries. *J Biosoc Sci* 2005; 37(6):721-740.
- (39) Andersson L, Allebeck P, Gustafsson JE, Gunnell D. Association of IQ scores and school achievement with suicide in a 40-year follow-up of a Swedish cohort. *Acta Psychiatr Scand* 2008; 118(2):99-105.
- (40) Gunnell D, Magnusson PK, Rasmussen F. Low intelligence test scores in 18 year old men and risk of suicide: cohort study. *BMJ* 2005; 330(7484):167.
- (41) Neisser U, Boodoo G, Bouchard Jnr T, Boykin AW, Brody N, Ceci SJ et al. Intelligence: knowns and unknowns. *Am Psychol* 1996; 51:77-101.
- (42) Gale CR, Johnson W, Deary IJ, Schoon I, Batty GD. Intelligence in girls and their subsequent smoking behaviour as mothers: the 1958 National Child Development Study and the 1970 British Cohort Study. *Int J Epidemiol* 2009; 38(1):173-181.
- (43) Batty GD, Deary IJ, Schoon I, Gale CR. Mental ability across childhood in relation to risk factors for premature mortality in adult life: the 1970 British Cohort Study. *J Epidemiol Community Health* 2007; 61(11):997-1003.
- (44) Batty GD, Deary IJ, Schoon I, Gale CR. Childhood mental ability in relation to food intake and physical activity in adulthood: the 1970 British Cohort Study. *Pediatrics* 2007; 119(1):e38-e45.
- (45) Malinosky-Rummell R, Hansen DJ. Long-term consequences of childhood physical abuse. *Psychol Bull* 1993; 114(1):68-79.
- (46) Enns MW, Cox BJ, Afifi TO, De GR, Ten HM, Sareen J. Childhood adversities and risk for suicidal ideation and attempts: a longitudinal population-based study. *Psychol Med* 2006; 36(12):1769-1778.
- (47) Gale CR, Batty GD, Deary IJ. Locus of control at age 10 years and health outcomes and behaviors at age 30 years: the 1970 British Cohort Study. *Psychosom Med* 2008; 70(4):397-403.
- (48) Pearce CM, Martin G. Locus of control as an indicator of risk for suicidal behaviour among adolescents. *Acta Psychiatr Scand* 1993; 88(6):409-414.
- (49) Batty GD, Shipley MJ, Gunnell D, Huxley R, Kivimaki M, Woodward M et al. Height, wealth, and health: an overview with new data from three longitudinal studies. *Econ Hum Biol* 2009; 7(2):137-152.
- (50) Gunnell D, Okasha M, Davey Smith G, Oliver SE, Sandhu J, Holly JM. Height, leg length, and cancer risk: a systematic review. *Epidemiol Rev* 2001; 23(2):313-342.
- (51) Leon DA, Davey Smith G, Shipley M, Strachan D. Adult height and mortality in London: early life, socioeconomic confounding, or shrinkage? *Journal of Epidemiology and Community Health* 1995; 49:5-9.
- (52) Whitley E, Rasmussen F, Tynelius P, Batty GD. Physical stature and method-specific attempted suicide: cohort study of one million men. *Psychiatry Res* 2010; 179(1):116-118.
- (53) Allebeck P, Bergh C. Height, body mass index and mortality: do social factors explain the association? *Public Health* 1992; 106(5):375-382.
- (54) Song YM, Davey Smith G, Sung J. Adult height and cause-specific mortality: a large prospective study of South Korean men. *Am J Epidemiol* 2003; 158(5):479-485.
- (55) Magnusson PK, Gunnell D, Tynelius P, Davey Smith G., Rasmussen F. Strong inverse association between height and suicide in a large cohort of Swedish men: evidence of early life origins of suicidal behavior? *Am J Psychiatry* 2005; 162(7):1373-1375.
- (56) Song YM, Sung J. Adult height and the risk of mortality in South Korean women. *Am J Epidemiol* 2008; 168(5):497-505.
- (57) Bjerkeset O, Romundstad P, Evans J, Gunnell D. Association of adult body mass index and height with anxiety, depression, and suicide in the general population: the HUNT study. *Am J Epidemiol* 2008; 167(2):193-202.

- (58) Mukamal KJ, Kawachi I, Miller M, Rimm EB. Body mass index and risk of suicide among men. *Arch Intern Med* 2007; 167(5):468-475.
- (59) O'Connor RC, Nock MK. The psychology of suicidal behaviour. *Lancet Psychiatry* 2014; 1(1):73-85.
- (60) Erikson R, Goldthorpe JH. Has social mobility in Britain decreased? Reconciling divergent findings on income and class mobility. *Br J Sociol* 2010; 61(2):211-230.
- (61) Clark C, Rodgers B, Caldwell T, Power C, Stansfeld S. Childhood and adulthood psychological ill health as predictors of midlife affective and anxiety disorders: the 1958 British Birth Cohort. *Arch Gen Psychiatry* 2007; 64(6):668-678.
- (62) Harris MA, Brett CE, Johnson W, Deary IJ. Personality stability from age 14 to age 77 years. *Psychol Aging* 2016; 31(8):862-874.
- (63) Deary IJ, Whalley LJ, Lemmon H, Crawford JR, Starr JM. The stability of individual differences in mental ability from childhood to old age: follow-up of the 1932 Scottish mental survey. *Intelligence* 2000; 28(1):49-55.
- (64) Geoffroy MC, Gunnell D, Power C. Prenatal and childhood antecedents of suicide: 50-year follow-up of the 1958 British Birth Cohort study. *Psychol Med* 2014; 44(6):1245-1256.
- (65) Bjorkenstam C, Kosidou K, Bjorkenstam E. Childhood adversity and risk of suicide: cohort study of 548 721 adolescents and young adults in Sweden. *BMJ* 2017; 357:j1334.
- (66) Power C, Elliott J. Cohort profile: 1958 British birth cohort (National Child Development Study). *Int J Epidemiol* 2006; 35(1):34-41.
- (67) Geoffroy MC, Boivin M, Arseneault L, Turecki G, Vitaro F, Brendgen M et al. Associations Between Peer Victimization and Suicidal Ideation and Suicide Attempt During Adolescence: Results From a Prospective Population-Based Birth Cohort. *J Am Acad Child Adolesc Psychiatry* 2016; 55(2):99-105.
- (68) Klomek AB, Sourander A, Niemela S, Kumpulainen K, Piha J, Tamminen T et al. Childhood bullying behaviors as a risk for suicide attempts and completed suicides: a population-based birth cohort study. *J Am Acad Child Adolesc Psychiatry* 2009; 48(3):254-261.
- (69) Jokela M, Batty GD, Nyberg ST, Virtanen M, Nabi H, Singh-Manoux A et al. Personality and all-cause mortality: individual-participant meta-analysis of 3,947 deaths in 76,150 adults. *Am J Epidemiol* 2013; 178(5):667-675.
- (70) Hakulinen C, Elovainio M, Pulkki-Raback L, Virtanen M, Kivimaki M, Jokela M. Personality and depressive symptoms: individual-participant meta-analysis of 10 cohort studies. *Depress Anxiety* 2015; 32(7):461-470.
- (71) Oquendo MA. Impulsive versus planned suicide attempts: different phenotypes? *J Clin Psychiatry* 2015; 76(3):293-294.
- (72) Allebeck P, Allgulander C, Fisher LD. Predictors of completed suicide in a cohort of 50,465 young men: role of personality and deviant behaviour. *BMJ* 1988; 297(6642):176-178.
- (73) Paffenbarger RS, Jr., Asnes DP. Chronic disease in former college students. 3. Precursors of suicide in early and middle life. *Am J Public Health Nations Health* 1966; 56(7):1026-1036.
- (74) Matthews G, Deary IJ, Whiteman MC. Personality Traits. Second Edition ed. Cambridge: The Press Syndicate of the University of Cambridge; 2003.
- (75) Tanji F, Kakizaki M, Sugawara Y, Watanabe I, Nakaya N, Minami Y et al. Personality and suicide risk: the impact of economic crisis in Japan. *Psychol Med* 2015; 45(3):559-573.
- (76) Yen S, Siegler IC. Self-Blame, Social Introversion, and Male Suicides: Prospective Data from a Longitudinal Study. *Archives of Suicide Research* 2003; 7:17-27.
- (77) Statham DJ, Heath AC, Madden PA, Bucholz KK, Bierut L, Dinwiddie SH et al. Suicidal behaviour: an epidemiological and genetic study. *Psychol Med* 1998; 28(4):839-855.
- (78) Kendler KS, Kuhn J, Prescott CA. The interrelationship of neuroticism, sex, and stressful life events in the prediction of episodes of major depression. *Am J Psychiatry* 2004; 161(4):631-636.

- (79) Steptoe A, Kivimaki M. Stress and cardiovascular disease. *Nat Rev Cardiol* 2012; 9(6):360-370.
- (80) Fujino Y, Mizoue T, Tokui N, Yoshimura T. Prospective cohort study of stress, life satisfaction, self-rated health, insomnia, and suicide death in Japan. *Suicide Life Threat Behav* 2005; 35(2):227-237.
- (81) Feskanich D, Hastrup JL, Marshall JR, Colditz GA, Stampfer MJ, Willett WC et al. Stress and suicide in the Nurses' Health Study. *J Epidemiol Community Health* 2002; 56(2):95-98.
- (82) Baumert J, Schneider B, Lukaschek K, Emeny RT, Meisinger C, Erazo N et al. Adverse conditions at the workplace are associated with increased suicide risk. *J Psychiatr Res* 2014; 57:90-95.
- (83) Tsutsumi A, Kayaba K, Ojima T, Ishikawa S, Kawakami N. Low control at work and the risk of suicide in Japanese men: a prospective cohort study. *Psychother Psychosom* 2007; 76(3):177-185.
- (84) Malzberg B. Mortality among Patients with Mental Disease. Utica, New York: State Hospitals Press; 1934.
- (85) Malzberg B. Life tables for patients with mental disease. *Mental Hygiene* 1932; 16:465-480.
- (86) Colton CW, Manderscheid RW. Congruencies in increased mortality rates, years of potential life lost, and causes of death among public mental health clients in eight states. *Prev Chronic Dis* 2006; 3(2):A42.
- (87) Hotopf M, McCracken L. Physical health and mental illness. In: Davies SC, editor. Annual Report of the Chief Medical Officer 2013, Public Mental Health Priorities: Investing in the Evidence. London: Department of Health; 2014.
- (88) Nordentoft M, Wahlbeck K, Hallgren J, Westman J, Osby U, Alinaghizadeh H et al. Excess mortality, causes of death and life expectancy in 270,770 patients with recent onset of mental disorders in Denmark, Finland and Sweden. *PLoS One* 2013; 8(1):e55176.
- (89) Pompili M, Girardi P, Ruberto A, Tatarelli R. Suicide in borderline personality disorder: a meta-analysis. *Nord J Psychiatry* 2005; 59(5):319-324.
- (90) Batty GD, Kivimaki M, Gray L, Davey Smith G, Marmot MG, Shipley MJ. Cigarette smoking and site-specific cancer mortality: testing uncertain associations using extended follow-up of the original Whitehall study. *Ann Oncol* 2008; 19(5):996-1002.
- (91) Bonkovsky HL. On stress and the liver: a chicken and egg conundrum. *Gastroenterology* 2015; 148(5):894-897.
- (92) Lewis G. Psychological distress and death from cardiovascular disease. *BMJ* 2012; 345:e5177.
- (93) Bell S, Russ TC, Kivimaki M, Stamatakis E, Batty GD. Dose-Response Association Between Psychological Distress and Risk of Completed Suicide in the General Population. *JAMA Psychiatry* 2015; 72(12):1254-1256.
- (94) Schneider B, Lukaschek K, Baumert J, Meisinger C, Erazo N, Ladwig KH. Living alone, obesity, and smoking increase risk for suicide independently of depressive mood findings from the population-based MONICA/KORA Augsburg cohort study. *J Affect Disord* 2014; 152-154:416-421.
- (95) Fukuchi N, Kakizaki M, Sugawara Y, Tanji F, Watanabe I, Fukao A et al. Association of marital status with the incidence of suicide: a population-based Cohort Study in Japan (Miyagi cohort study). *J Affect Disord* 2013; 150(3):879-885.
- (96) Kposowa AJ. Marital status and suicide in the National Longitudinal Mortality Study. *J Epidemiol Community Health* 2000; 54(4):254-261.
- (97) Frisch M, Simonsen J. Marriage, cohabitation and mortality in Denmark: national cohort study of 6.5 million persons followed for up to three decades (1982-2011). *Int J Epidemiol* 2013; 42(2):559-578.
- (98) Tsai AC, Lucas M, Sania A, Kim D, Kawachi I. Social integration and suicide mortality among men: 24-year cohort study of U.S. health professionals. *Ann Intern Med* 2014; 161(2):85-95.

- (99) Tsai AC, Lucas M, Kawachi I. Association Between Social Integration and Suicide Among Women in the United States. *JAMA Psychiatry* 2015; 72(10):987-993.
- (100) Berkman LF, Syme SL. Social networks, host resistance, and mortality: a nine-year follow-up study of Alameda County residents. *Am J Epidemiol* 1979; 109(2):186-204.
- (101) Coyne JC. Depression and the response of others. *J Abnorm Psychol* 1976; 85(2):186-193.
- (102) Lynch J, Kaplan G. Socioeconomic Position. In: Lisa F. Berkman IK, editor. *Social Epidemiology*. Oxford: Oxford University Press; 2000. 13-35.
- (103) Morselli EG. *Suicide: an essay on comparative moral statistics*. New York: D. Appleton and Company; 1882.
- (104) Durkheim E. *Le Suicide: Etude de Sociologie* (1897). Paris: Prs Univ France; 1967.
- (105) Cavan RS. *Suicide*. Chicago: University of Chicago Press; 1928.
- (106) Sainsbury P. *Suicide in London: An Ecological Study*. London: Chapman and Hall; 1955.
- (107) Li Z, Page A, Martin G, Taylor R. Attributable risk of psychiatric and socio-economic factors for suicide from individual-level, population-based studies: a systematic review. *Soc Sci Med* 2011; 72(4):608-616.
- (108) Crump C, Sundquist K, Sundquist J, Winkleby MA. Sociodemographic, psychiatric and somatic risk factors for suicide: a Swedish national cohort study. *Psychol Med* 2014; 44(2):279-289.
- (109) Knipe DW, Carroll R, Thomas KH, Pease A, Gunnell D, Metcalfe C. Association of socio-economic position and suicide/attempted suicide in low and middle income countries in South and South-East Asia - a systematic review. *BMC Public Health* 2015; 15:1055.
- (110) Iemmi V, Bantjes J, Coast E, Channer K, Leone T, McDaid D et al. Suicide and poverty in low-income and middle-income countries: a systematic review. *Lancet Psychiatry* 2016; 3(8):774-783.
- (111) Rose G. Incubation period of coronary heart disease. *Br Med J (Clin Res Ed)* 1982; 284(6329):1600-1601.
- (112) Chang SS, Stuckler D, Yip P, Gunnell D. Impact of 2008 global economic crisis on suicide: time trend study in 54 countries. *BMJ* 2013; 347:f5239.
- (113) Reeves A, Stuckler D, McKee M, Gunnell D, Chang SS, Basu S. Increase in state suicide rates in the USA during economic recession. *Lancet* 2012; 380(9856):1813-1814.
- (114) Gunnell D, Donovan J, Barnes M, Davies R, Hawton K, Kapur N et al. *The 2008 Global Financial Crisis: effects on mental health and suicide*. University of Bristol: Policy Bristol; 2015.
- (115) Stuckler D, Basu S, Suhrcke M, Coutts A, McKee M. The public health effect of economic crises and alternative policy responses in Europe: an empirical analysis. *Lancet* 2009; 374(9686):315-323.
- (116) WHO. *Guns, knives, and pesticides : reducing access to lethal means*. Geneva: WHO; 2009.
- (117) Pirkis J, Too LS, Spittal MJ, Krysinaka K, Robinson J, Cheung YT. Interventions to reduce suicides at suicide hotspots: a systematic review and meta-analysis. *Lancet Psychiatry* 2015; 2(11):994-1001.
- (118) Susanne CD, Garraza LG, Walrath CM, McKeon R, Goldston DB, Heilbron NS. Identifying and Referring Youths at Risk for Suicide Following Participation in School-Based Gatekeeper Training. *Suicide Life Threat Behav* 2015; 45(4):461-476.
- (119) Walrath C, Garraza LG, Reid H, Goldston DB, McKeon R. Impact of the Garrett Lee Smith youth suicide prevention program on suicide mortality. *Am J Public Health* 2015; 105(5):986-993.
- (120) Sisask M, Varnik A. Media roles in suicide prevention: a systematic review. *Int J Environ Res Public Health* 2012; 9(1):123-138.
- (121) Jukkala T, Stickley A, Makinen IH, Baburin A, Sparen P. Age, period and cohort effects on suicide mortality in Russia, 1956-2005. *BMC Public Health* 2017; 17(1):235.

- (122) Wasserman D, Hoven CW, Wasserman C, Wall M, Eisenberg R, Hadlaczky G et al. School-based suicide prevention programmes: the SEYLE cluster-randomised, controlled trial. *Lancet* 2015; 385(9977):1536-1544.
- (123) Hawton K, Witt KG, Salisbury TL, Arensman E, Gunnell D, Hazell P et al. Psychosocial interventions following self-harm in adults: a systematic review and meta-analysis. *Lancet Psychiatry* 2016; 3(8):740-750.
- (124) Stone M, Laughren T, Jones ML, Levenson M, Holland PC, Hughes A et al. Risk of suicidality in clinical trials of antidepressants in adults: analysis of proprietary data submitted to US Food and Drug Administration. *BMJ* 2009; 339:b2880.
- (125) Board on Children YaFCoLaJ. Building Capacity to Reduce Bullying: Workshop Summary. Washington DC: National Academies Press; 2014.
- (126) Moore TH, Kapur N, Hawton K, Richards A, Metcalfe C, Gunnell D. Interventions to reduce the impact of unemployment and economic hardship on mental health in the general population: a systematic review. *Psychol Med* 2017; 47(6):1062-1084.
- (127) Gunnell D, Chang S-S. Economic recession, unemployment, and suicide. In: O'Connor RC, Pirkis J, editors. *The International Handbook of Suicide Prevention*. Oxford: John Wiley & Sons, Ltd.; 2016.
- (128) Brion MJ, Lawlor DA, Matijasevich A, Horta B, Anselmi L, Araujo CL et al. What are the causal effects of breastfeeding on IQ, obesity and blood pressure? Evidence from comparing high-income with middle-income cohorts. *Int J Epidemiol* 2011; 40(3):670-680.
- (129) Lowe B, Wahl I, Rose M, Spitzer C, Glaesmer H, Wingenfeld K et al. A 4-item measure of depression and anxiety: validation and standardization of the Patient Health Questionnaire-4 (PHQ-4) in the general population. *J Affect Disord* 2010; 122(1-2):86-95.
- (130) Deary IJ, Bedford A. Some origins and evolution of the EPQ-R (short form) Neuroticism and Extraversion items. *Personality and Individual Differences* 2011; 50(8):1213-1217.
- (131) Russ TC, Stamatakis E, Hamer M, Starr JM, Kivimaki M, Batty GD. Socioeconomic status as a risk factor for dementia death: individual participant meta-analysis of 86 508 men and women from the UK. *Br J Psychiatry* 2013; 203:10-17.
- (132) Russ TC, Stamatakis E, Hamer M, Starr JM, Kivimaki M, Batty GD. Association between psychological distress and mortality: individual participant pooled analysis of 10 prospective cohort studies. *BMJ* 2012; 345:e4933.

Box 1. Profile of cohort studies contributing to new analyses herein

The Whitehall I Study: Established as a screening study for trials of treatment for smoking cessation and diabetes¹⁸, the Whitehall I Study has been most frequently utilised as a cohort study in its own right. Data were collected on 19,019 male, non-industrial, government employees aged from 40 to 69 years when examined 1967-70 1970 in London (UK), representing a 77% response. This involved the completion of a study questionnaire and participation in a medical examination. In brief, the questionnaire included enquiries regarding civil service employment grade (an indicator of socio-economic status), marital status, and health behaviours. Physical stature was measured directly. Men were traced using the UK National Health Service Central Registry which also provided data on cause of death, including suicide.

UK Biobank: This is a UK-wide, on-going, prospective cohort study established to explore gene*environment interactions in the context of chronic disease of major public health importance. Described in detail elsewhere¹⁹, between 2006 and 2010, 502,649 participants aged 37–73 years attended various geographically disparate research clinics. Participants populated a questionnaire, underwent an interview, and took part in various physical assessments. Study members reported consultation with a psychiatrist, and psychological distress was measured using the four-item version of the Patient Health Questionnaire (PHQ-4) with total scores ranging from 0 to 12 (higher scores denote greater distress).¹²⁹ Neuroticism was measured with the 12-item Eysenck Personality Questionnaire-Revised Short Form.¹³⁰ A notable feature of the study is the extremely low response proportion (<10%) resulting from the decision not to reissue requests to participate to non-responders (this suggests that 5 million people were invited to participate). Study participants were traced using the UK National Health Service Central Registry which also provided data on cause of death, including suicide.

The Health Surveys for England and the Scottish Health Surveys: The Health Survey for England (HSE)¹⁶ and Scottish Health Survey (SHS)¹⁷ are a series of geographically representative health examinations of people from the general population. Between 1994 and 2008, 16 independent, cross sectional, and methodologically near-identical studies were conducted on either an annual (HSE; N=13) or occasional basis (SHS; N=3). The original purpose of these studies was to monitor secular trends in health and related behaviours. A total of 199 504 men and women, aged 16-107 at baseline, were surveyed. Socioeconomic status (including age of leaving education, occupation social class¹³¹) marital status, and ethnicity were obtained via self-report, and height was measured directly. Consenting study members linked to national health registers for vital status, including suicide death¹³².

The Swedish Conscripts Study: The record linkage procedures used to generate this cohort have been reported previously²⁰. In brief, the cohort comprised all non-adopted men born in Sweden from 1950 to 1976 with both biological parents identified in the multi-generation register. Unique personal identification numbers were used to link the people in this register with the population and housing censuses records (1960 and 1970), and military service conscription, cause of death, and national hospital discharge registers, resulting in 1,379,531 successful matches. The military service conscription examination involves a structured, standard medical assessment of physical (including height), mental health and cognitive function. IQ was measured by four written subtests representing verbal, logical, spatial, and technical abilities.⁴⁰ Suicide information was extracted from hospital admissions data (1969-2006).

In all studies, the relevant ethical approvals were obtained and participants provided written informed consent with the exception of the original Whitehall study where, given the era of baseline data collection, it was not required. Hazard ratios were exclusively computed using the Cox regression technique.

Figure 1. Annual suicide rates (age-standardised) for ages ≥ 15 years in England and Wales (3-year moving averages) 1861–2007

*From: Suicide in England and Wales 1861–2007: a time-trends analysis.³
Reproduced with permission following payment to OUP.*

Figure 2. Suicide rates (age-standardised) in different regions of the world, 2012

*From: Preventing suicide: a global imperative.¹
Reproduced with kind permission from WHO.*

**Figure 3. IQ and suicide risk:
17,736 hospitalisations for suicide in 1,109,453 conscripted men**

*Based on further analyses of data published elsewhere.²⁰
IQ category 9 (lowest performance) is the referent.*

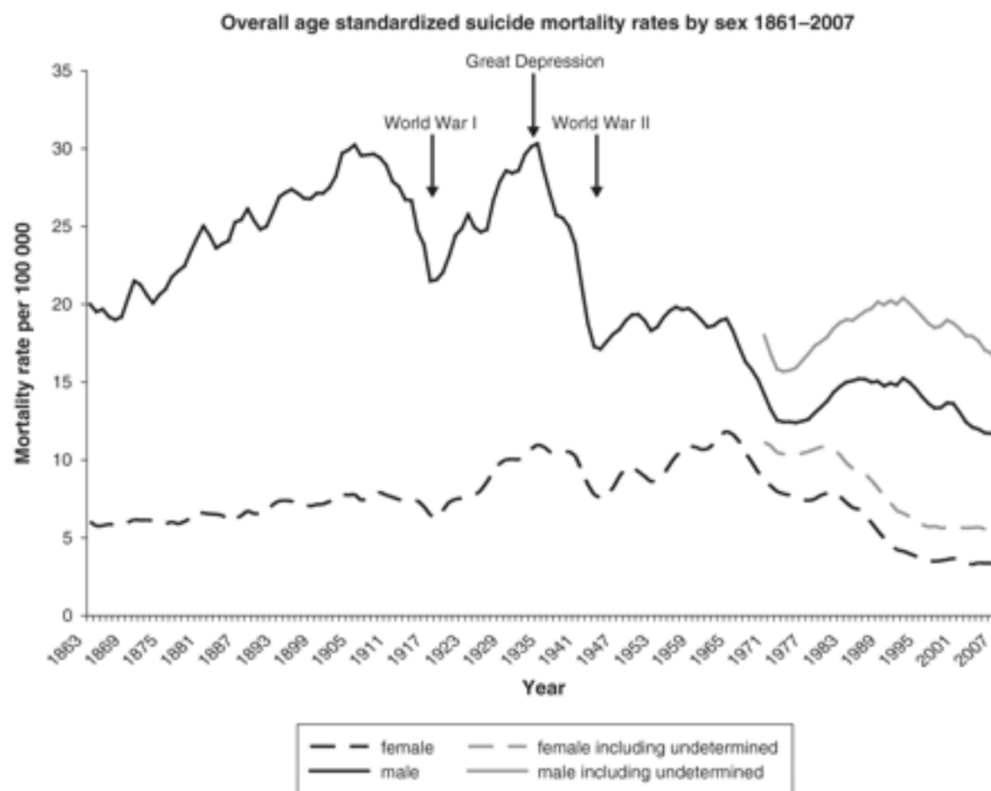
**Figure 4. Physical stature and suicide risk:
19,248 suicide hospitalisations in 1,182,114 conscripted men**

*Based on further analyses of data published elsewhere.⁵²
Height decile 1 (shortest) is the referent.*

**Figure 5. Association of psychosocial factors with suicide deaths:
117 suicide deaths in 170,678 individuals from the Health Survey for England and the Scottish Health Survey**

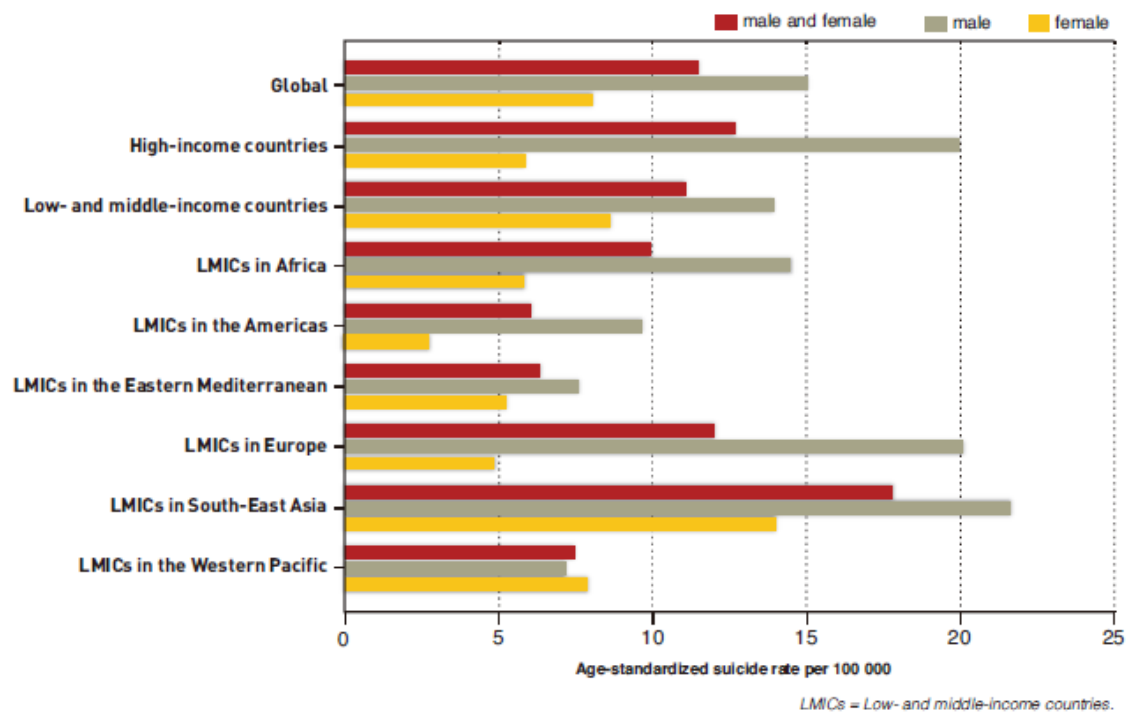
Based on further analyses of data published elsewhere.⁹³

Figure 1. Annual suicide rates (age-standardised) for ages ≥ 15 years in England and Wales (3-year moving averages) 1861–2007



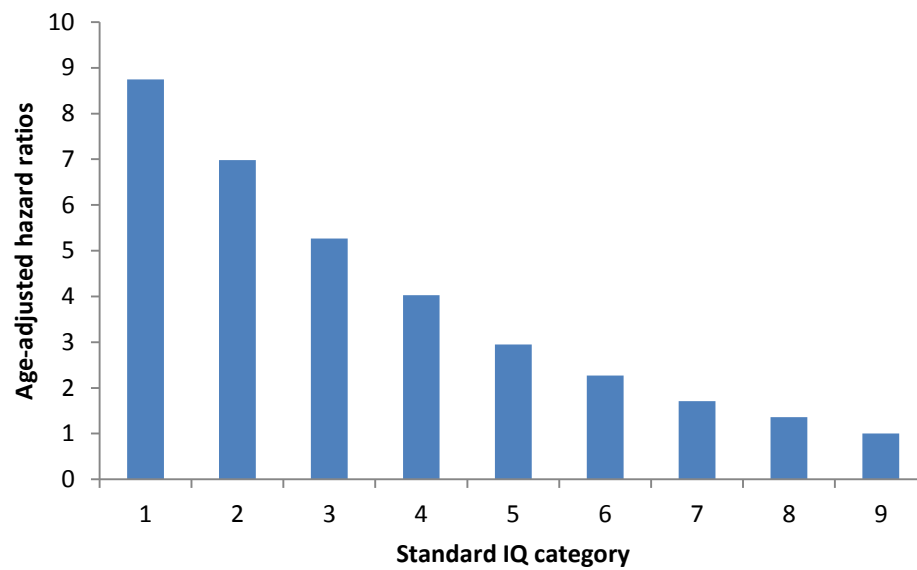
From: Suicide in England and Wales 1861–2007: a time-trends analysis³.
Reproduced with permission following payment to OUP.

Figure 2. Suicide rates (age-standardised) in different regions of the world, 2012



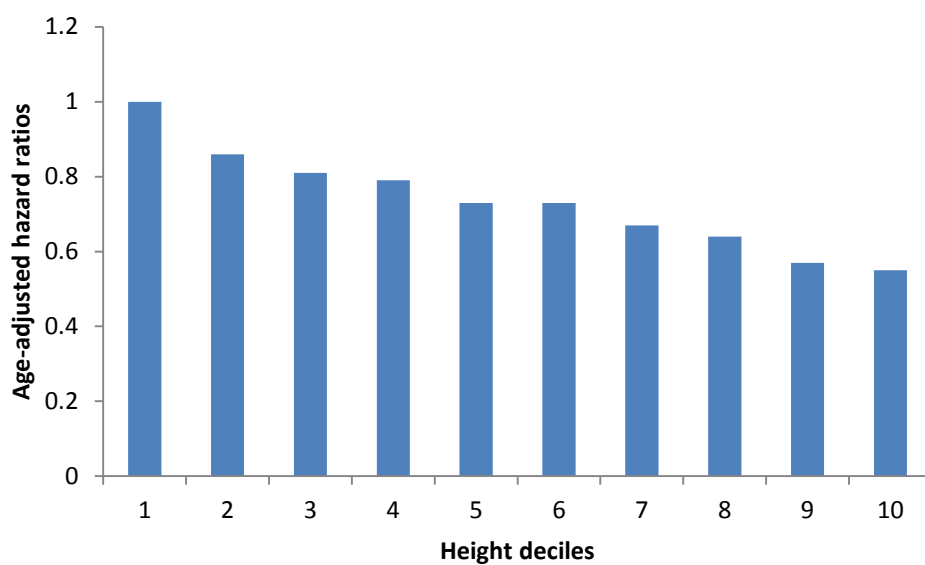
From: Preventing suicide: a global imperative.¹
 Reproduced with kind permission from WHO.

**Figure 3. IQ and suicide risk:
17,736 hospitalisations for suicide in 1,109,453 conscripted men**



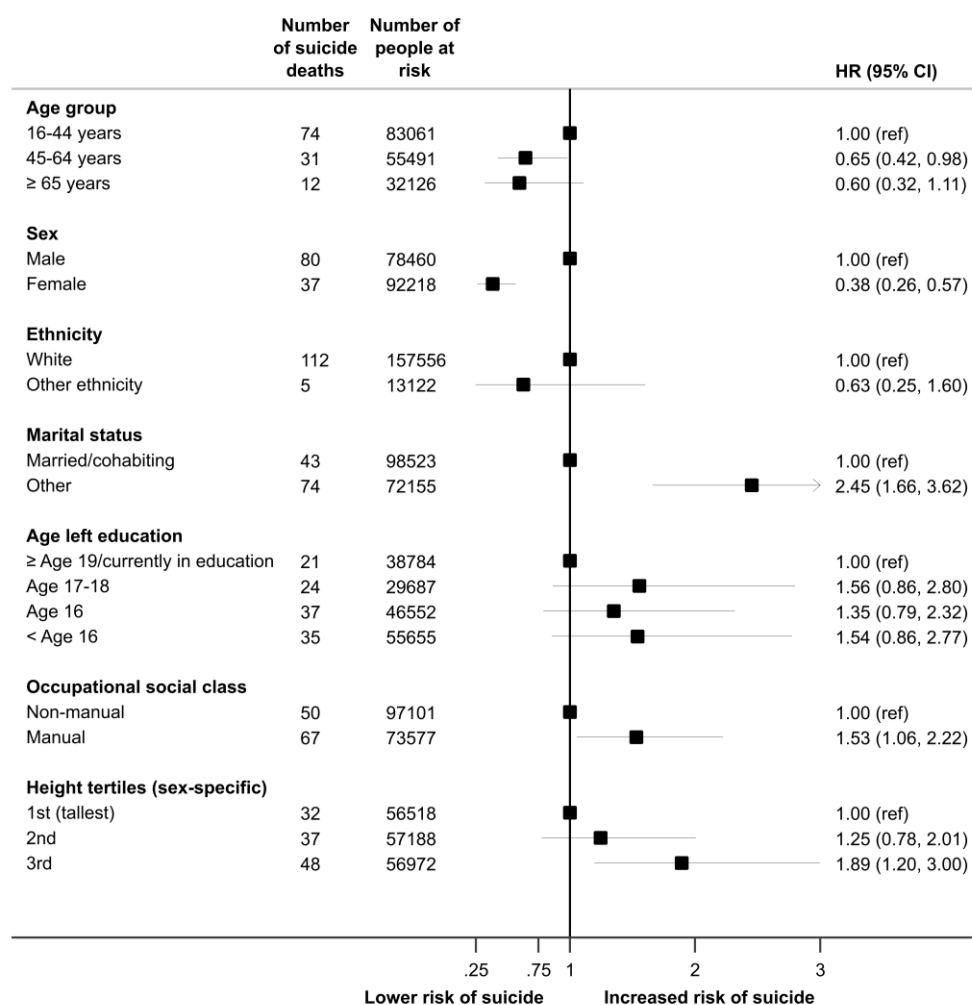
Based on further analyses of data published elsewhere ²⁰.
IQ category 9 (lowest performance) is the referent.

**Figure 4. Physical stature and suicide risk:
19,248 suicide hospitalisations in 1,182,114 conscripted men**



Based on further analyses of data published elsewhere ⁵²
Height decile 1 (shortest) is the referent.

**Figure 5. Association of psychosocial factors with suicide deaths:
117 suicide deaths in 170,678 individuals from the Health Survey for England and the Scottish
Health Survey**



Based on further analyses of data published elsewhere.⁹³

**Table 1. Association of psychosocial factors with suicide deaths:
81 suicide deaths in 17,955 men in the original Whitehall study**

	Number of suicide deaths	Number of people at risk	Age-adjusted hazard ratio (95% confidence interval)	Mutually-adjusted hazard ratio (95% confidence interval)
<i>Marital status</i>				
Married	63	15806	1.0 (ref)	1.0
Single/divorced/widowed	18	2149	2.29 (1.36, 3.86)	2.15 (1.25, 3.70)
<i>Physical stature</i>				
Shortest third (<68 ins)	28	5183	1.0 (ref)	1.0
Middle third (68-70 ins)	29	6766	0.76 (0.45, 1.27)	0.79 (0.47, 1.34)
Tallest third (>70 ins)	24	6006	0.69 (0.40, 1.20)	0.74 (0.43, 1.30)
<i>Employment grade</i>				
High (Admin/Prof/Exec)	57	13201	1.0 (ref)	1.0
Low (Clerical/Other grades)	24	4754	1.41 (0.85, 2.32)	1.16 (0.69, 1.96)

Table 2. Personality and suicide risk: Summary of findings from general population-based cohort studies

Study name (citation)	Study design & sample	Assessment of personality type & suicide	Results
Australian Twin Registry ⁷⁷	Prospective cohort study of twins initially surveyed in 1979/91 and again in 1989/1994.	Eysenck Personality Questionnaire. Self-reported serious suicide attempt.	Odds ratio (95% confidence interval) for 75th vs. 25th centile for neuroticism: 1.99 (1.42, 2.79).
No study name ⁷⁶	Prospective cohort study of US state university alumni. Four analytical groups : suicide completion group (N=44), clinically depressed group (N=39), control deceased group (N=39), control living group (N=39). Age at baseline and duration of follow-up not reported.	Minnesota Multiphasic Personality Inventory. Cause of death from death certificate.	Social introversion scores were higher in suicide completion group vs. deceased control group (p=0.0015).
Christchurch Health and Development Study ²²	Prospective cohort study within a single New Zealand city, general population; N=881 to 1025 (dependent on analyses).	Eysenck questionnaire at age 14 years. Self-reported suicide attempt between 14 and 21 yr of age.	Neuroticism was positively related to suicide attempt (beta coefficient 0.059, p<0.05).
Miyagi Cohort Study ⁷⁵	Prospective cohort study sampling participants from the Miyagi region (northern Japan); general population; N= 29,432 aged 40-64 yr at baseline followed for a maximum of 18 yr.	Eysenck Personality Questionnaire (subscale range: 1-12 with higher number indicating greater degree of a given personality type). Cause of death from death certificate.	90 deaths from suicide. Age- & sex-adjusted hazard ratio (95% confidence interval) for >=9 vs. <=3: 1.37 (0.74, 2.56) for extraversion, and 2.39 (1.37, 4.18) for neuroticism. Little impact after further statistical adjustment.

**Table 3. Association of psychosocial factors with suicide mortality:
Up to 149 suicide deaths in 449,073 participants in UK Biobank**

		Number of suicide deaths	Number of people at risk	Age- & sex-adjusted hazard ratio (95% confidence interval)
Psychological distress (PHQ-4)	1 (low)	48	177,893	1.0 (ref)
	2	45	163,630	1.04 (0.69, 1.56)
	3	56	107,550	1.90 (1.29, 2.81)
P for trend				0.002
Per 1-SD (2.11 points) increase		149	449,073	1.35 (1.20, 1.52)
Psychiatric consultation	No	105	441,285	1.0 (ref)
	Yes	66	57,681	5.01 (3.68, 6.82)
Neuroticism	1 (low)	21	107,993	1.0 (ref)
	2	35	128,738	1.57 (0.95, 2.69)
	3	75	164,694	2.74 (1.68, 4.46)
P for trend				<0.0001
Per 1-SD (3.27 points) increase		131	321,456	1.68 (1.43, 1.96)

Table 4. Psychosocial stress and suicide risk: Summary of findings from general population-based cohort studies

Study name (Citation)	Study design & sample	Assessment of psychosocial stress & suicide	Results
Nurses' Health Study (Feskanich et al. 2002)	Prospective cohort study of 94,110 US married female registered nurses aged 30-55 yr. at baseline followed for maximum of 14 years giving rise to 73 suicide deaths.	Experience of stress at home and work, categorised as 'minimal', 'light', 'moderate', or 'severe'.	'U'-shaped relation: multiply-adjusted hazard ratio (95% confidence interval) for suicide risk for women reporting in minimal (2.1; 1.0 to 4.5) and severe stress (3.7; 1.7 to 8.3) in the home, and minimal (2.4; 0.9 to 6.1) and severe stress (1.9; 0.8 to 4.7) in the workplace.
Fukuoka region study (Fujino et al. 2005)	Prospective cohort study of 13,259 people (7337 women) from the general population aged 30-79 yr at baseline followed for a mean of 7.4 yr giving rise to 48 suicides deaths.	Stress was assessed using a non-standard questionnaire concerning 'home life' in the prior year (4 categories of frequency). Death from suicide from cause of death registers.	Multiply-adjusted hazard ratio (95% confidence interval) for suicide risk for people reporting occasional stress (2.9; 1.2, 6.9) and no stress (3.1; 0.8, 11.8) relative to very occasional group.
Jichi Medical School Cohort Study (Tsutsumi et al., 2007)	Prospective cohort study of 3125 men aged ≥65 yr followed for a max 10 yr. giving rise to 14 suicide deaths.	Job control and job demand assessed using the WHO MONICA Psychosocial Study Questionnaire. Death from suicide from cause of death registers.	Multiply-adjusted hazard ratio (95% confidence interval) for suicide risk for low job control relative to high: 4.10 (1.31, 12.83), and for high job demand relative to low: 0.73 (0.22, 2.38).
MONICA Augsburg project (Baumert et al. 2014)	Prospective cohort study of 6817 men and women aged 25-74 yr followed for a mean of 12.6 years giving rise to 28 suicide deaths (2 in women).	Job strain as assessed by the Job Content Questionnaire (Karasek). Death from suicide obtained by data linkage.	Multiply-adjusted hazard ratio (95% confidence interval) for suicide risk in the higher job strain group relative to low/intermediate: 1.67 (0.76, 3.68).