

## Supplementary Information

### **Nrf2 activation does not affect adenoma development in a mouse model of colorectal cancer**

Elena V. Knatko<sup>a</sup>, Cecilia Castro<sup>b</sup>, Maureen Higgins<sup>a</sup>, Ying Zhang<sup>a</sup>, Tadashi Honda<sup>c</sup>,  
Colin J. Henderson<sup>d</sup>, C. Roland Wolf<sup>d</sup>, Julian L. Griffin<sup>b,e</sup>, and Albena T. Dinkova-  
Kostova<sup>a,f</sup>

<sup>a</sup>Jacqui Wood Cancer Centre, Division of Cellular Medicine, School of Medicine,  
University of Dundee, Dundee, DD1 9SY, Scotland, UK

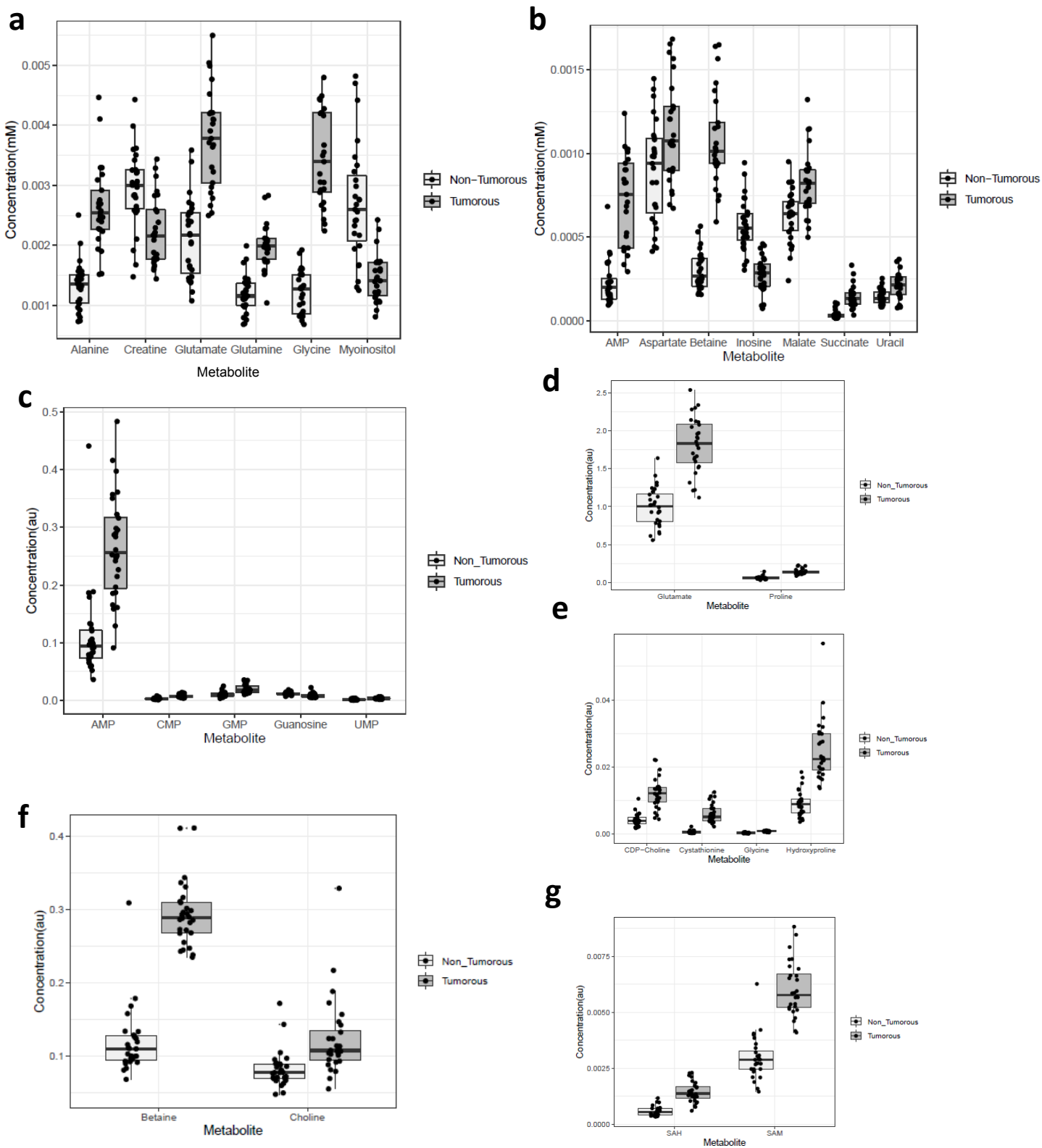
<sup>b</sup>Department of Biochemistry and the Cambridge Systems Biology Centre, University  
of Cambridge, Cambridge, CB2 1QW, UK

<sup>c</sup>Department of Chemistry and Institute of Chemical Biology & Drug Discovery, Stony  
Brook University, Stony Brook, NY 11794-3400, USA

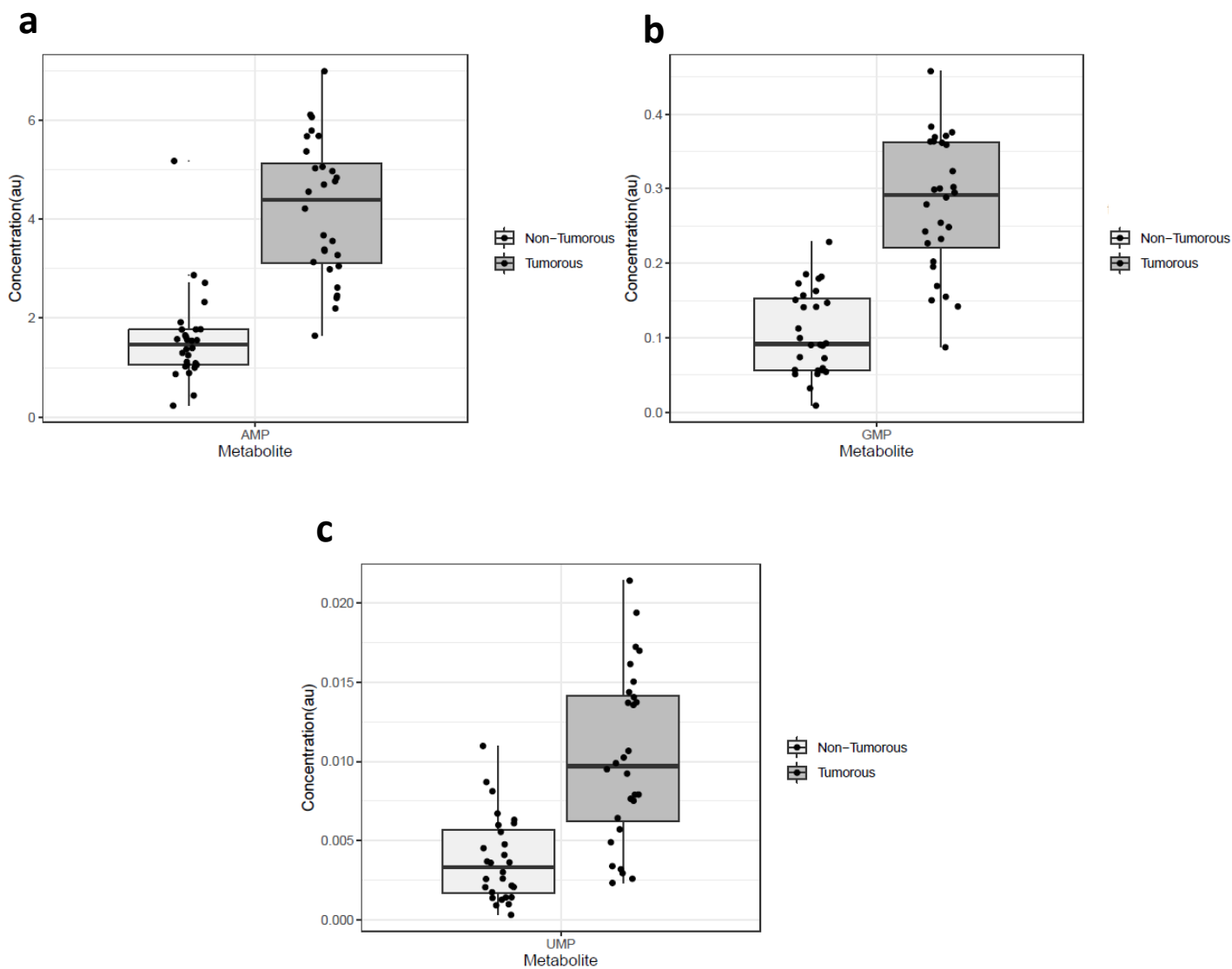
<sup>d</sup>Division of Systems Medicine, School of Medicine, University of Dundee, Dundee,  
DD1 9SY, Scotland, UK

<sup>e</sup>Section of Biomolecular Medicine, Department of Metabolism, Digestion and  
Reproduction, Imperial College London, London SW7 2AZ, UK

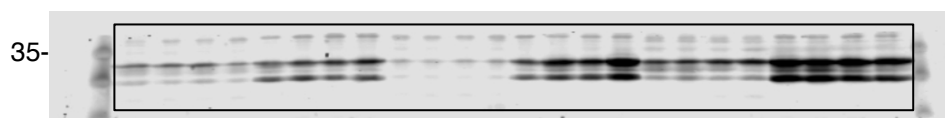
<sup>f</sup>Department of Pharmacology and Molecular Sciences and Department of Medicine,  
Johns Hopkins University School of Medicine, Baltimore, MD 21205, USA



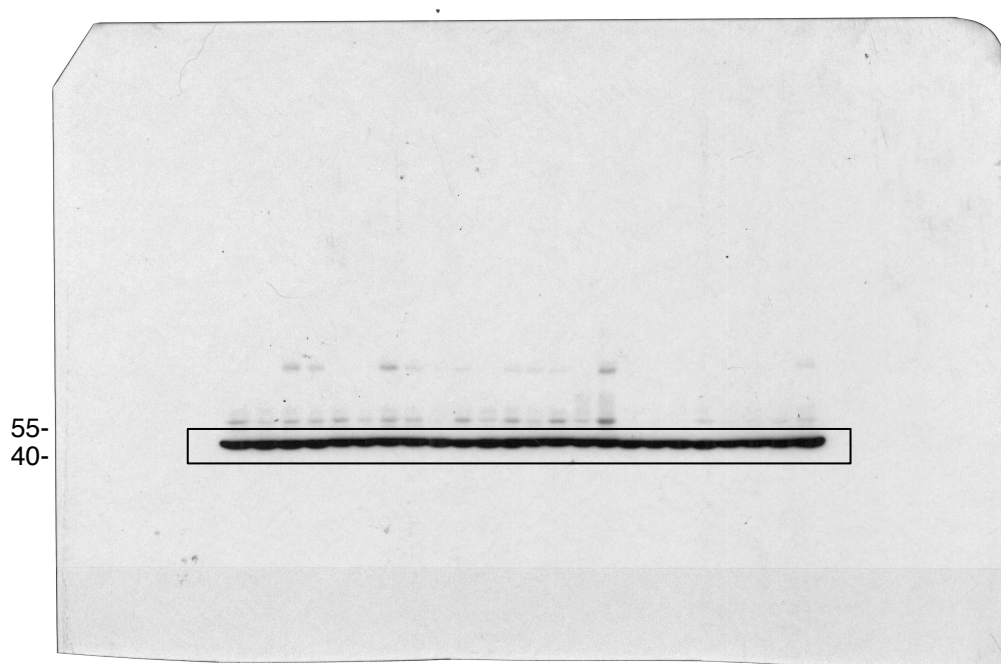
**Supplementary Fig. 1. Tumor and peri-tumoral tissues have different metabolic profiles. (a,b)** Concentration of selected metabolites in peri-tumorous (white bars) and tumorous (black bars) tissues as measured by NMR. In all cases  $p < 0.001$ . **(c-f)** Concentration of selected metabolites in peri-tumorous (control, white bars) and tumorous (black bars) tissues as measured by LC-MS using the C18pfp-based method. For all metabolites,  $p < 0.001$ .



**Supplementary Fig. 2. Compared to peri-tumoral tissues, tumours have increased levels of AMP, GMP and UMP.** Concentration of AMP (a), GMP (b), and UMP (c), in tissues of peri-tumorous (white bars) and tumorous (black bars) tissues in wild-type mice as measured by LC-MS using the behamide-based method. For all metabolite,  $p < 0.001$ .



Hmox1



$\beta$ -actin

**Supplementary Fig. 3.** Uncropped and unedited images of the immunoblots shown in Fig. 3i.