

Figure 1 : Out of sample predictions for 2011

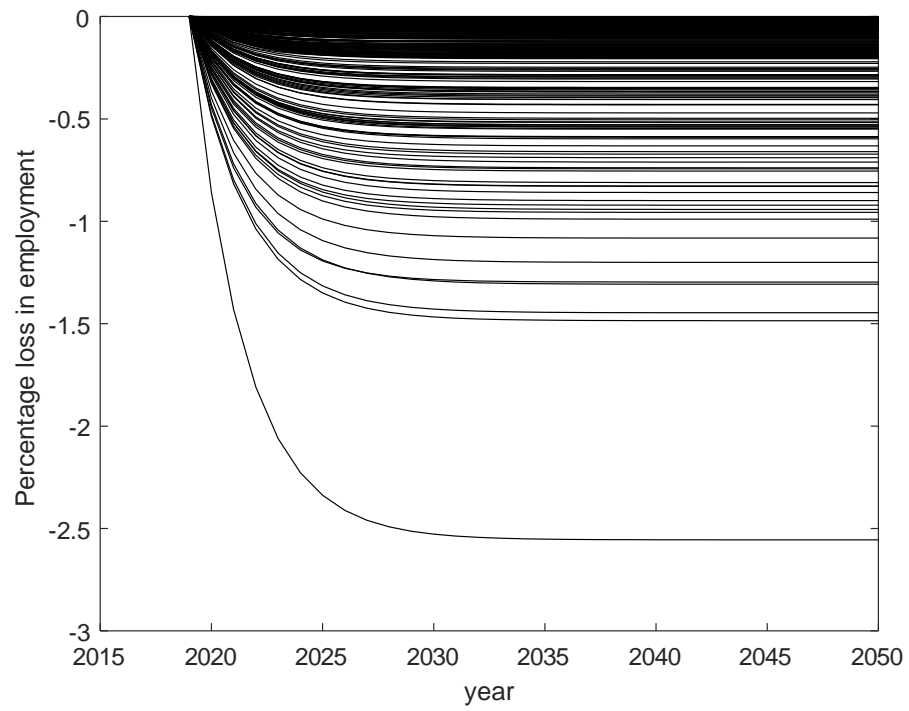


Figure 2 : Dynamic paths for % employment shortfall

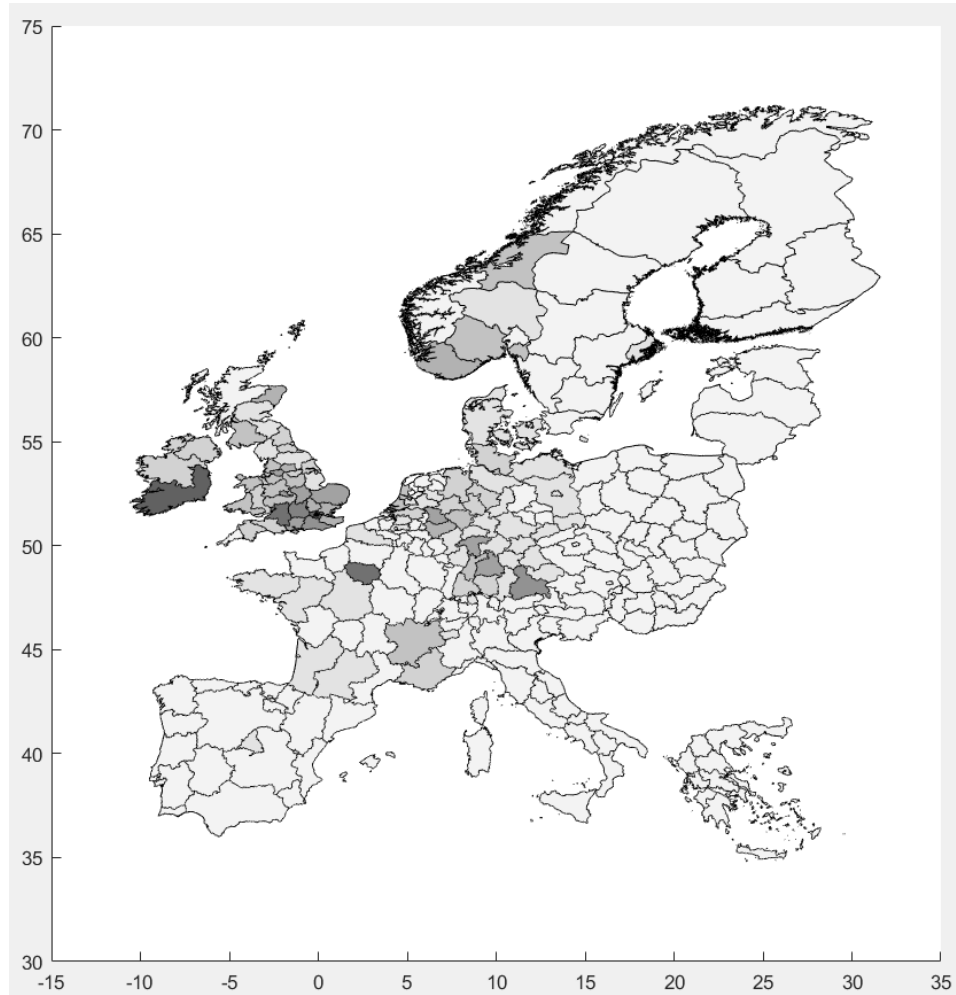


Figure 3 : % employment shortfall across 255 EU regions

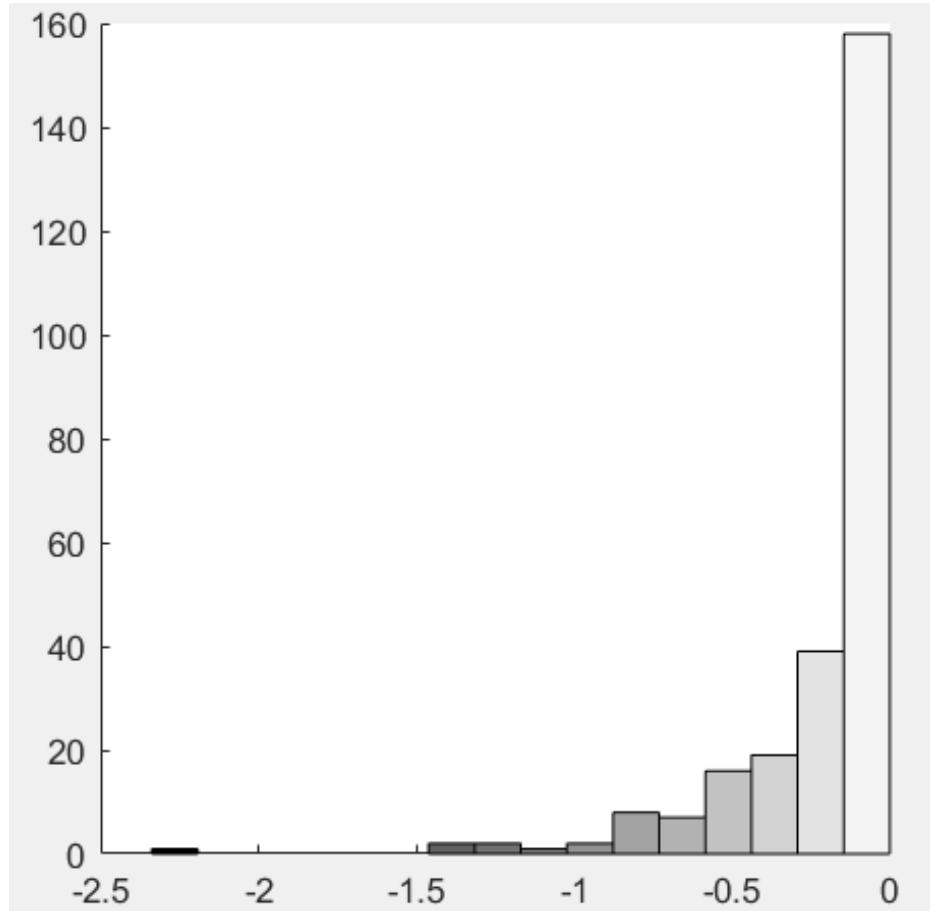


Figure 4 : % employment shortfall across 255 regions

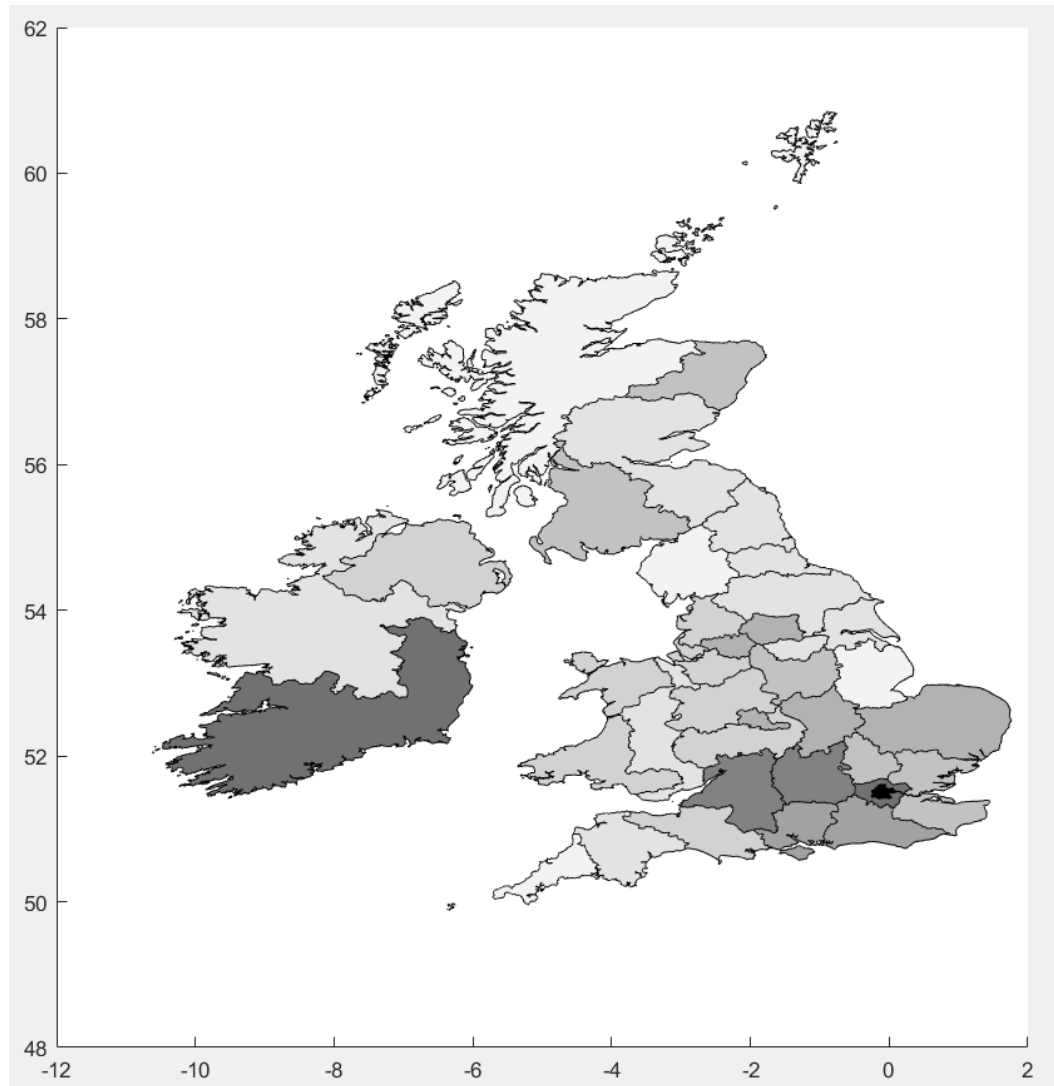


Figure 5 : % employment shortfall UK and Ireland

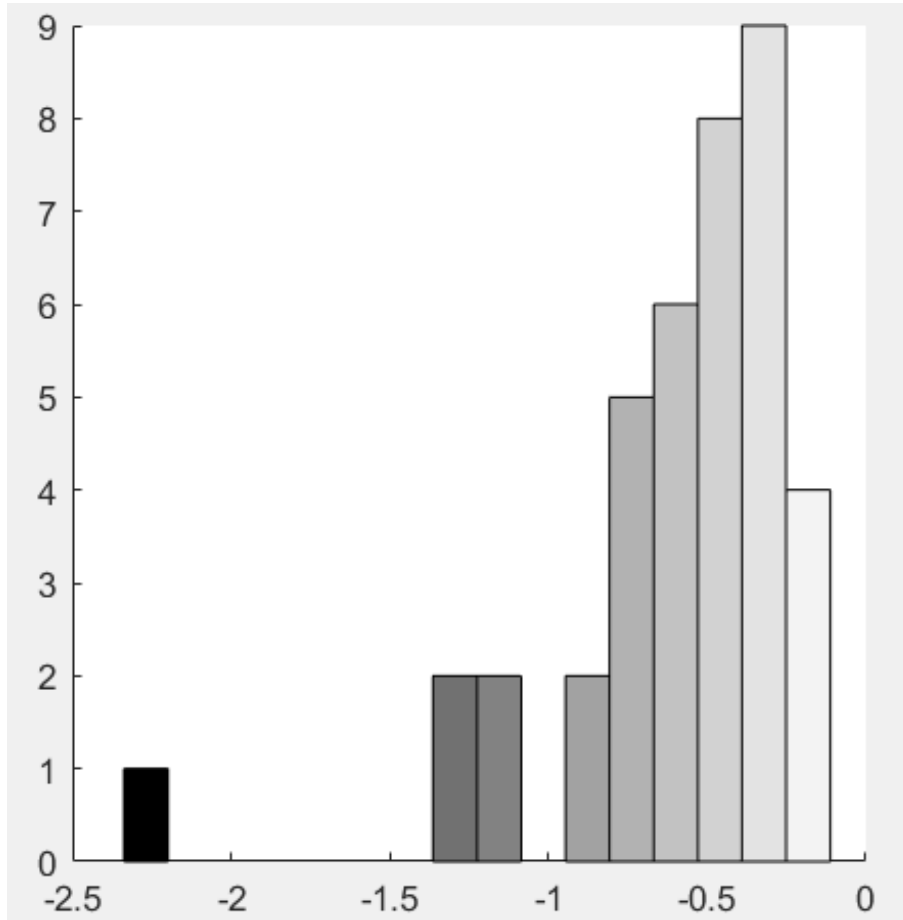


Figure 6 : % employment shortfall

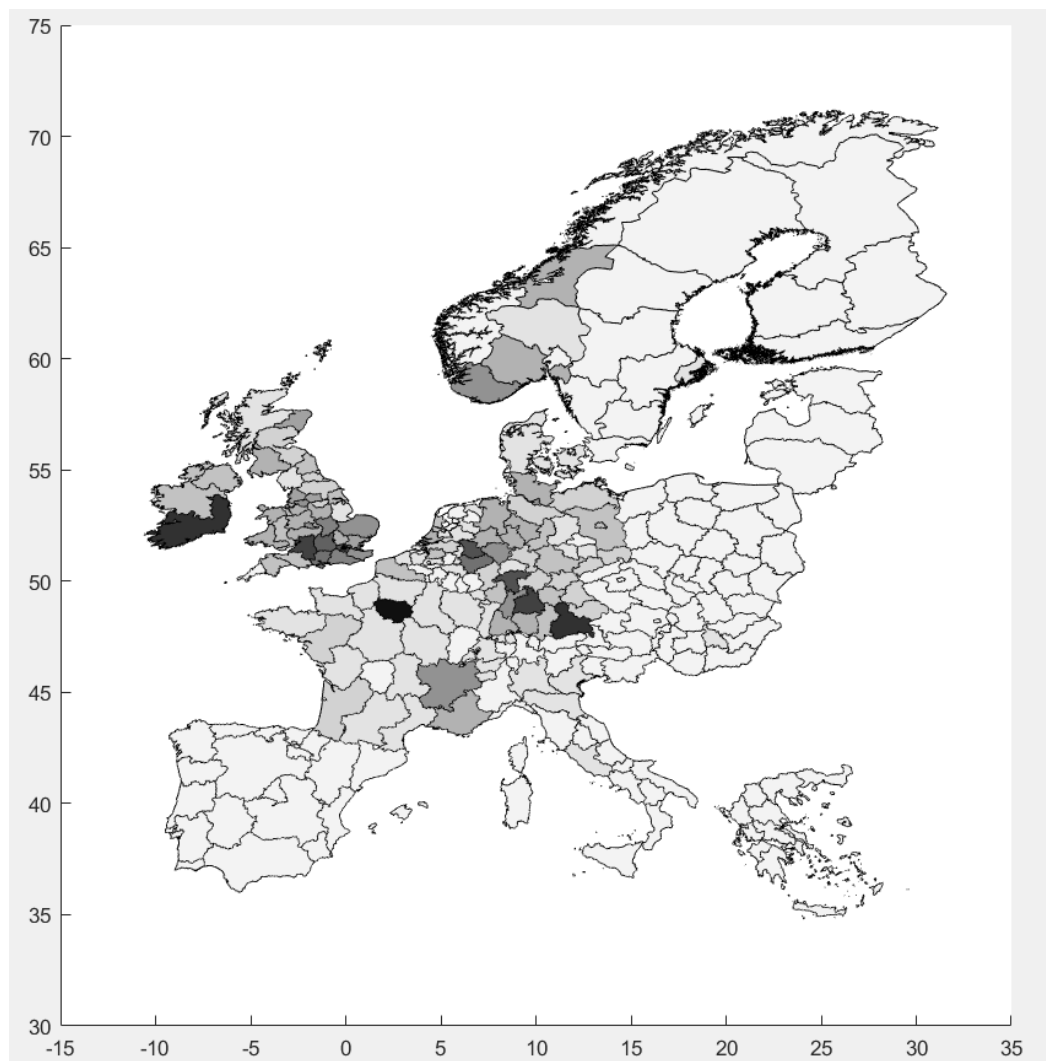


Figure 7 : % employment shortfall due to Industry

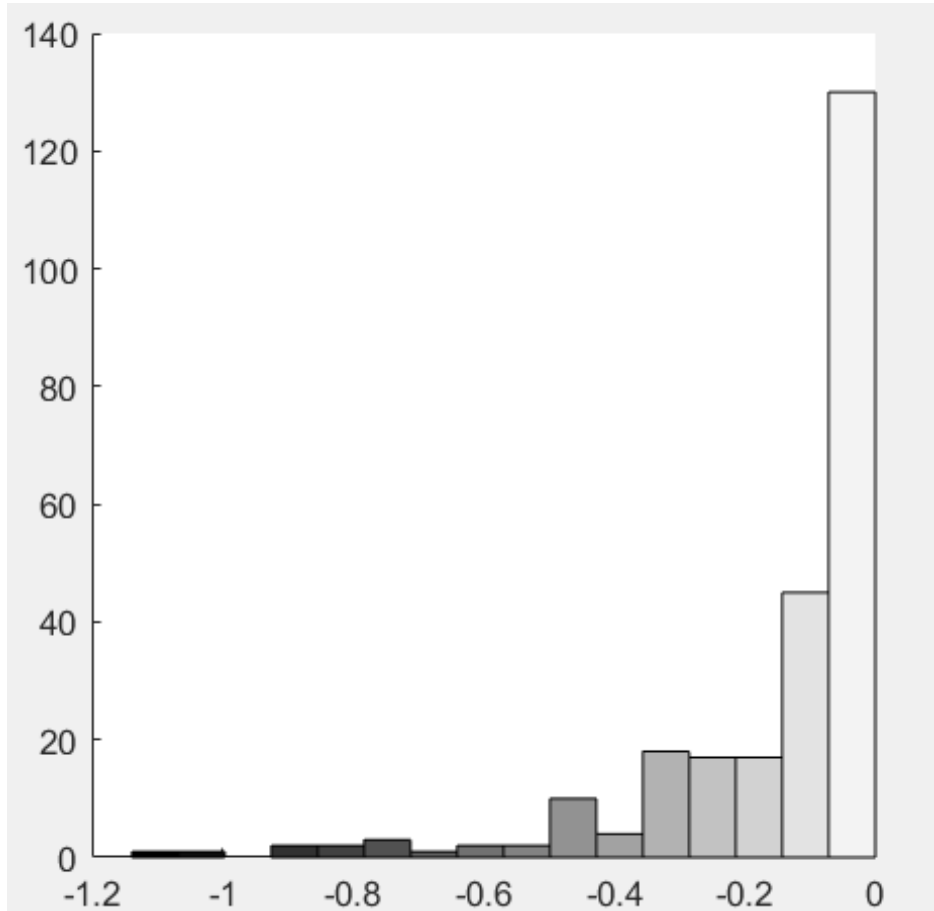


Figure 8 : % employment shortfall due to Industry



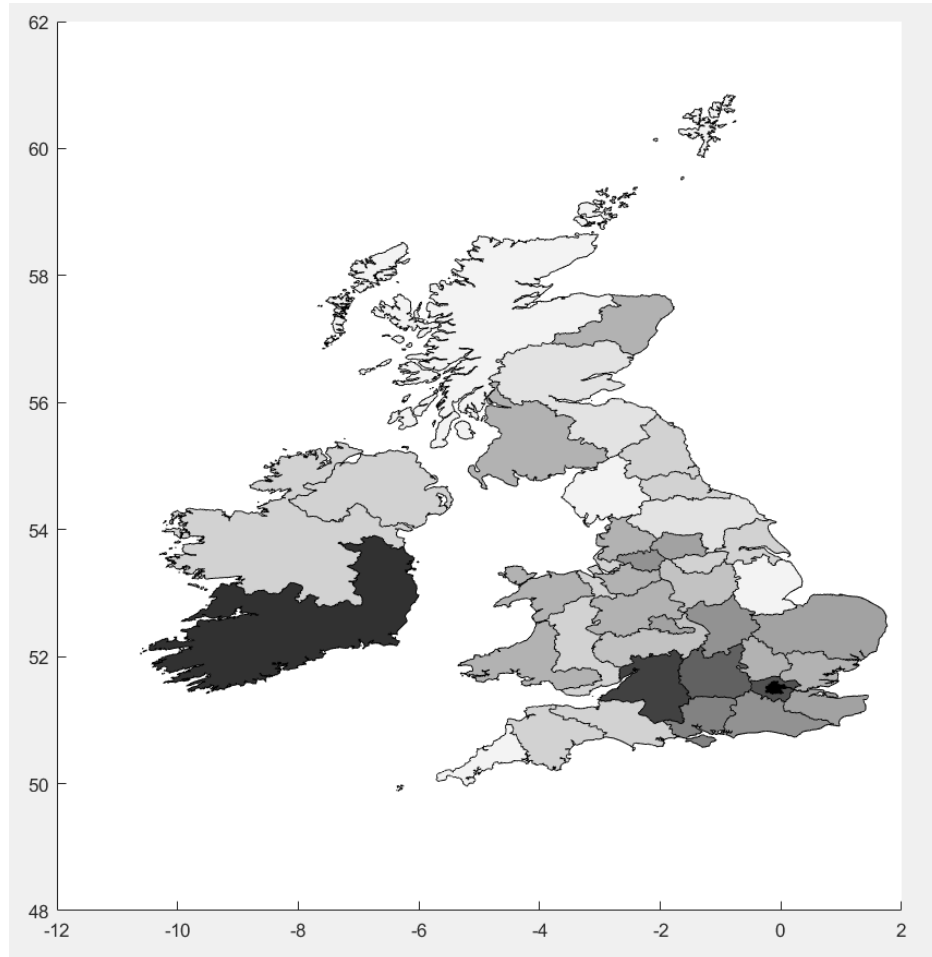


Figure 9 : % employment shortfall UK and Ireland due to Industry

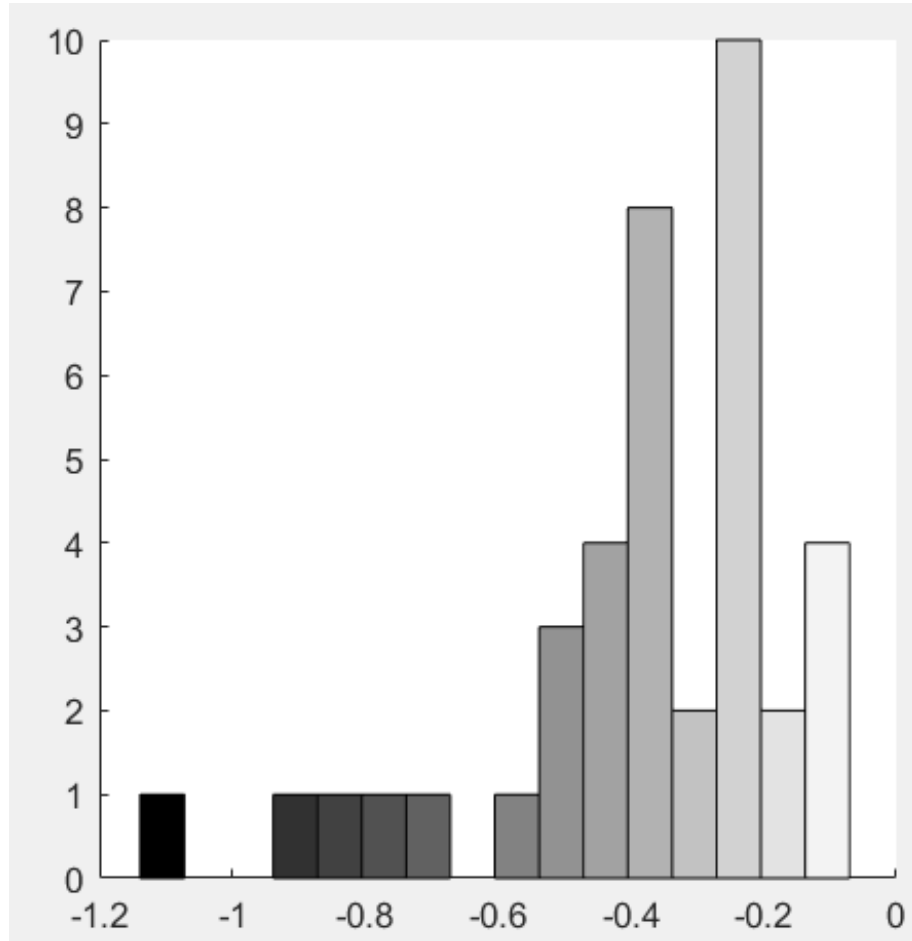


Figure 10 : % employment shortfall due to Industry

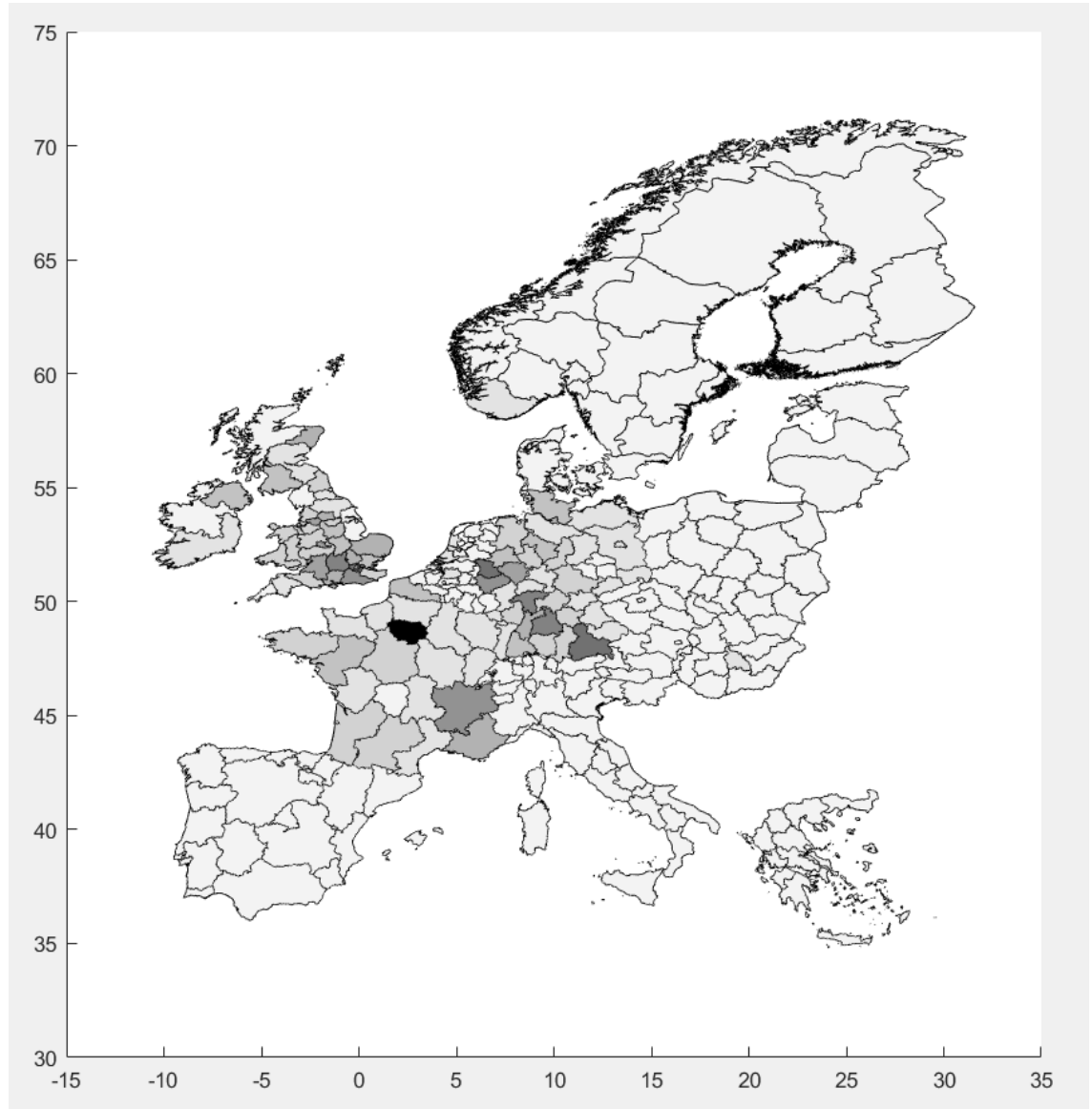


Figure 11 : % employment shortfall due to Transport equipment etc

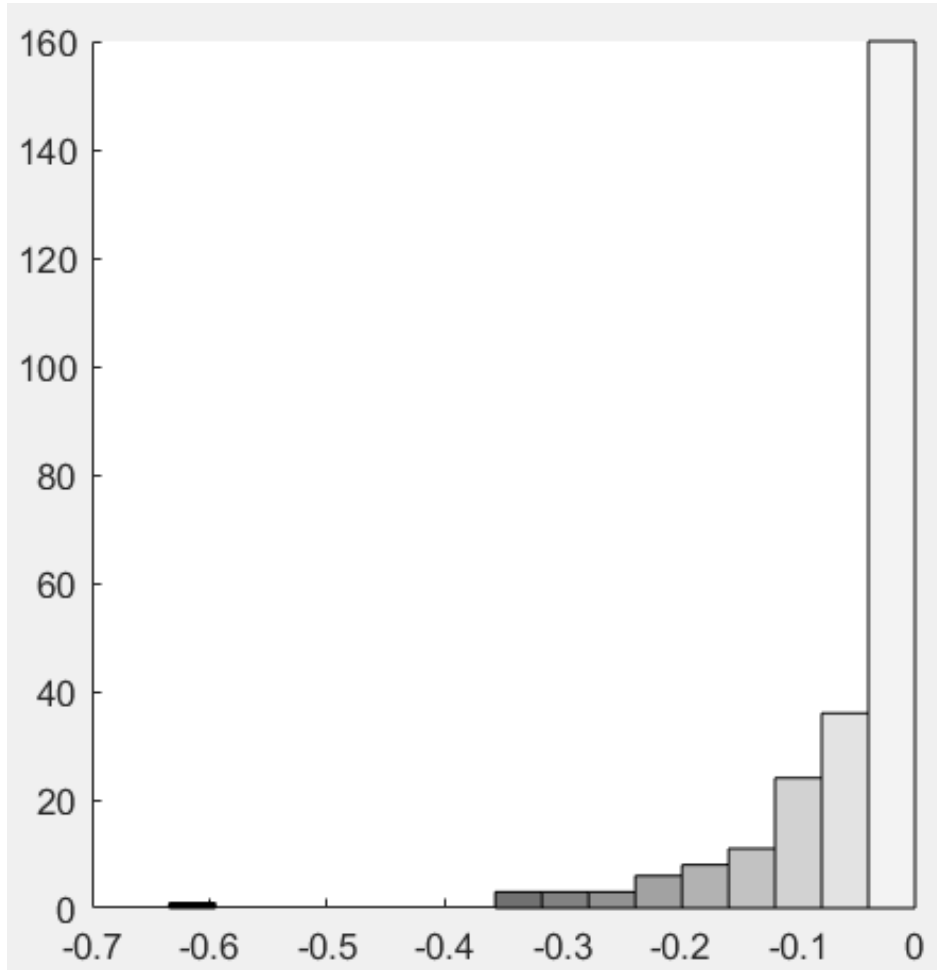


Figure 12 : Frequency distribution from Figure 11

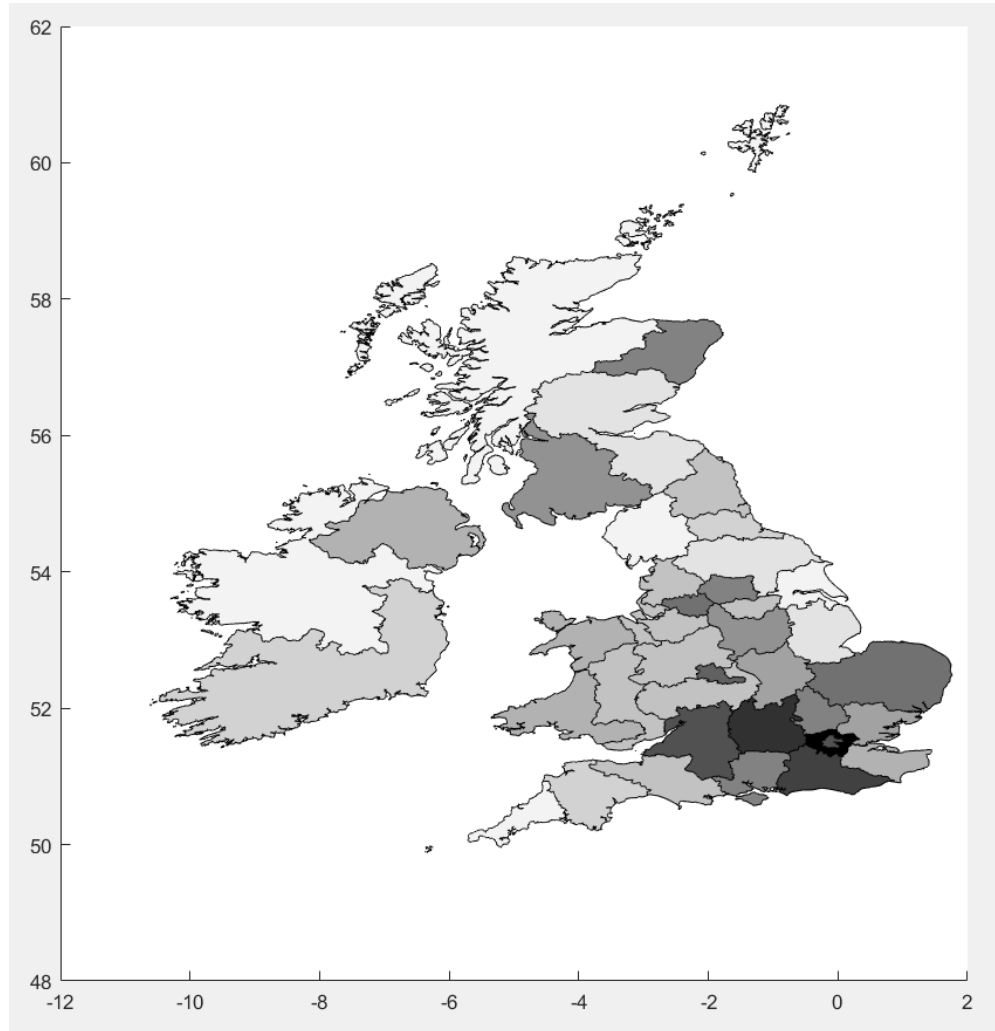


Figure 13 : % shortfall UK and Ireland due to Transport equipment etc

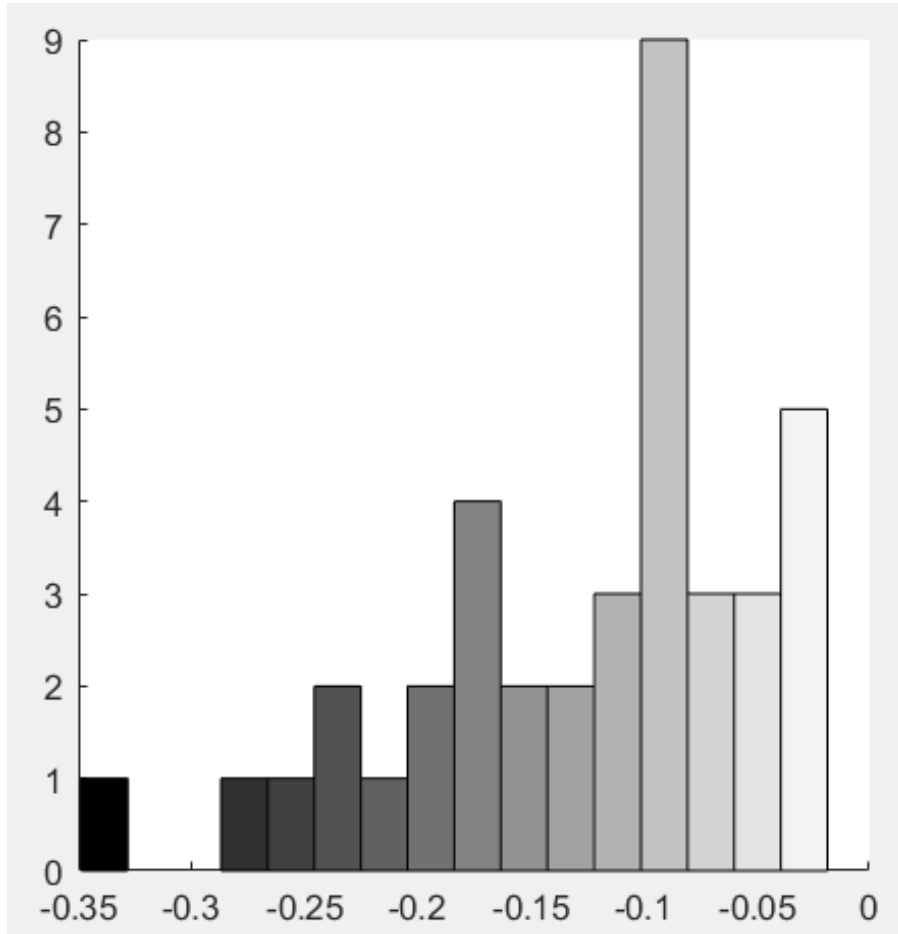


Figure 14 : Frequency distribution from Figure 13

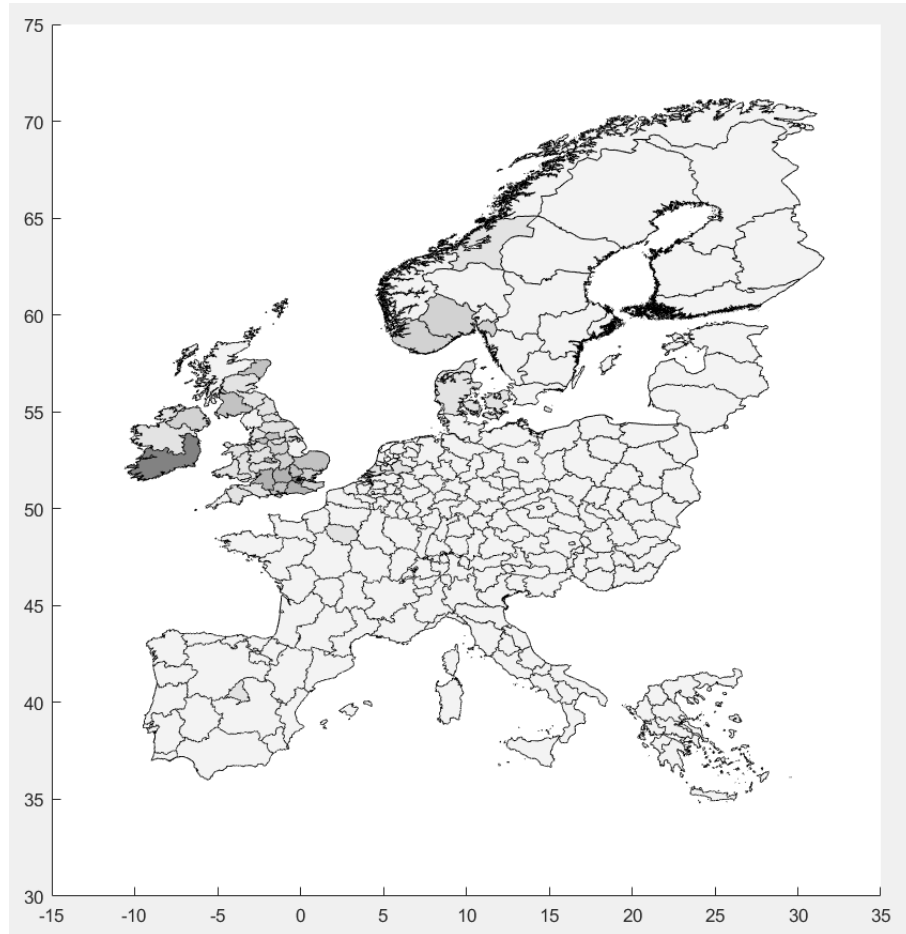


Figure 15: Services impact: % employment shortfall across 255 EU regions

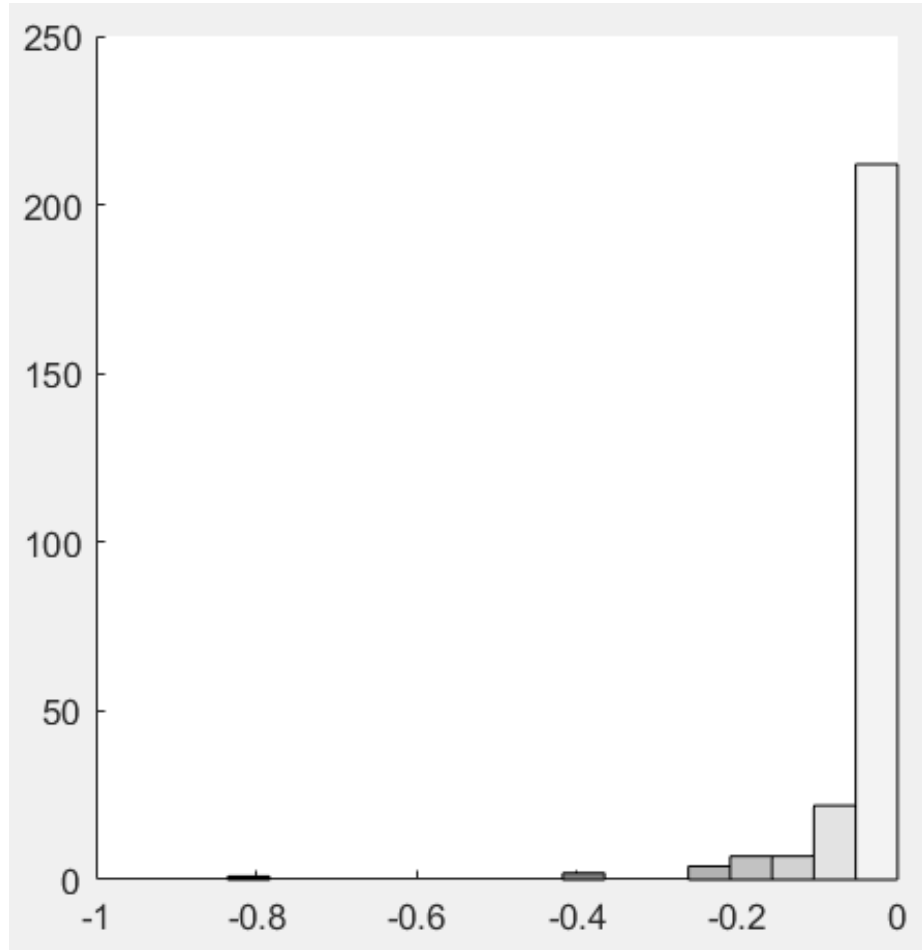


Figure 16 : % employment shortfall due to Services



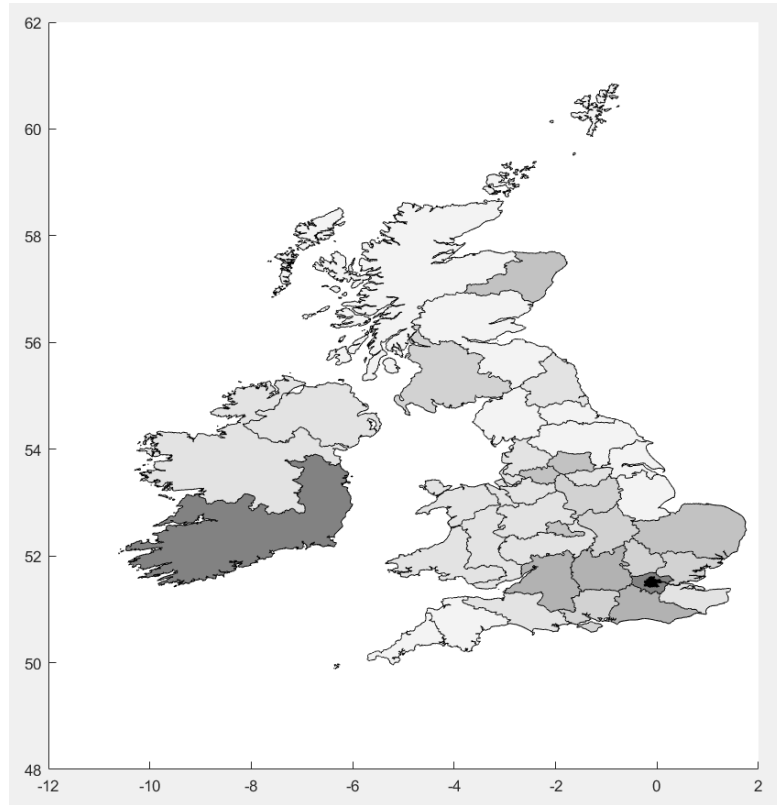


Figure 17: % employment shortfall UK and Ireland due to Services

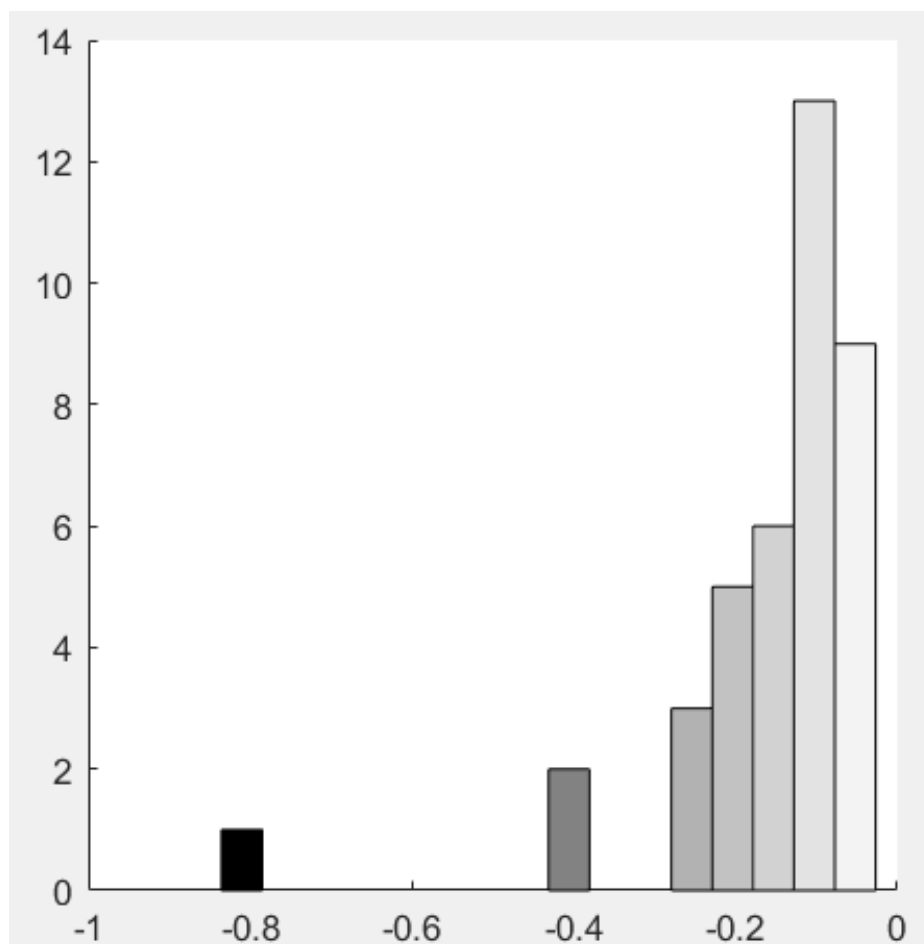


Figure 18 : % employment shortfall due to Services

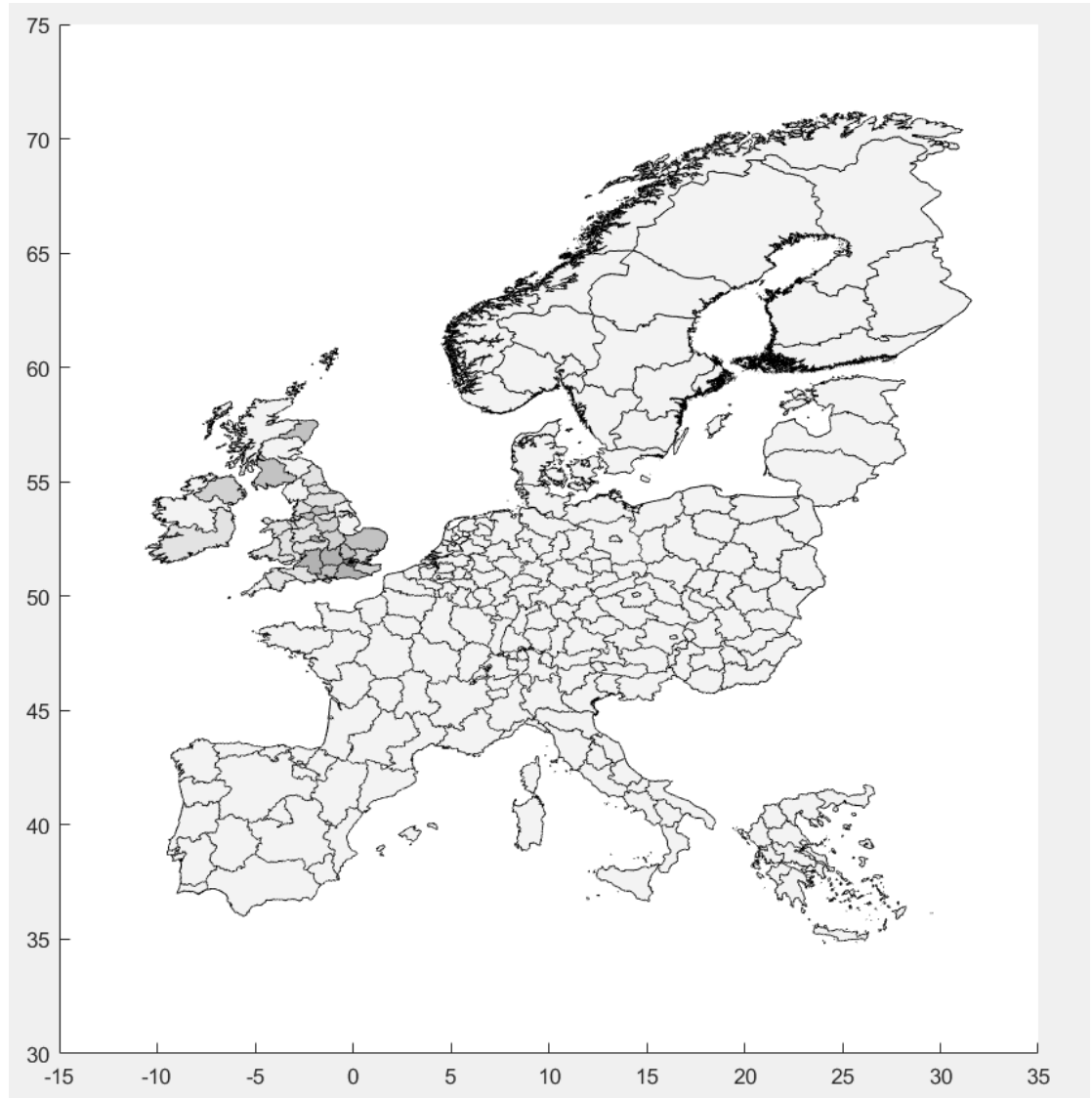


Figure 19: % employment shortfall due to Financial intermediation

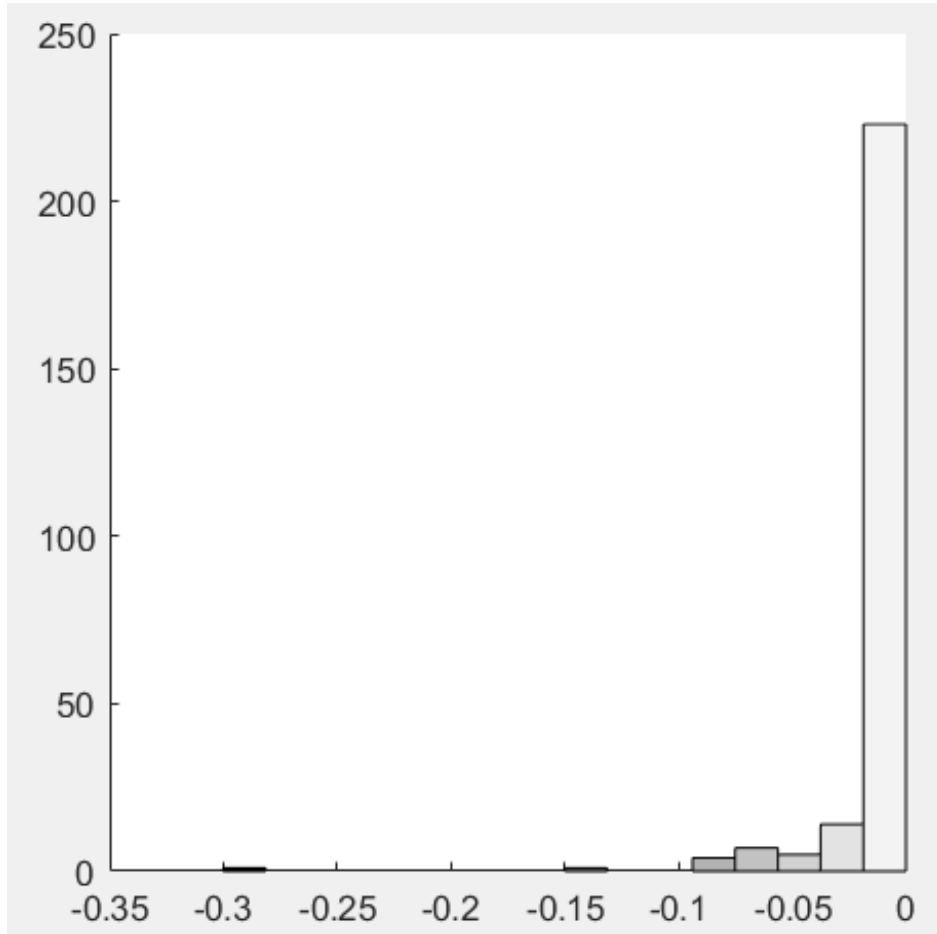


Figure 20 : Frequency distribution from Figure 19

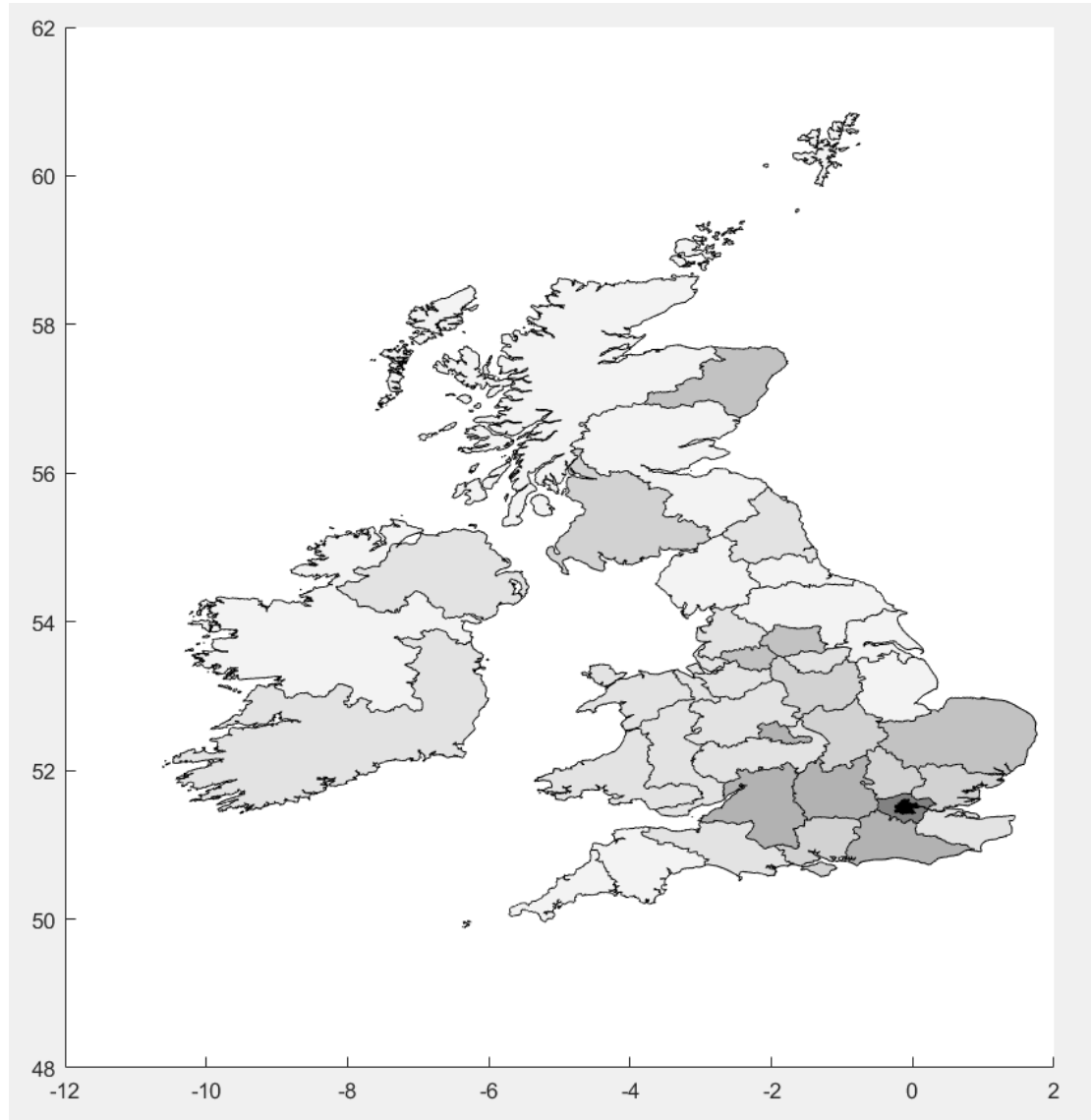


Figure 21: % employment shortfall UK and Ireland due to Financial intermediation

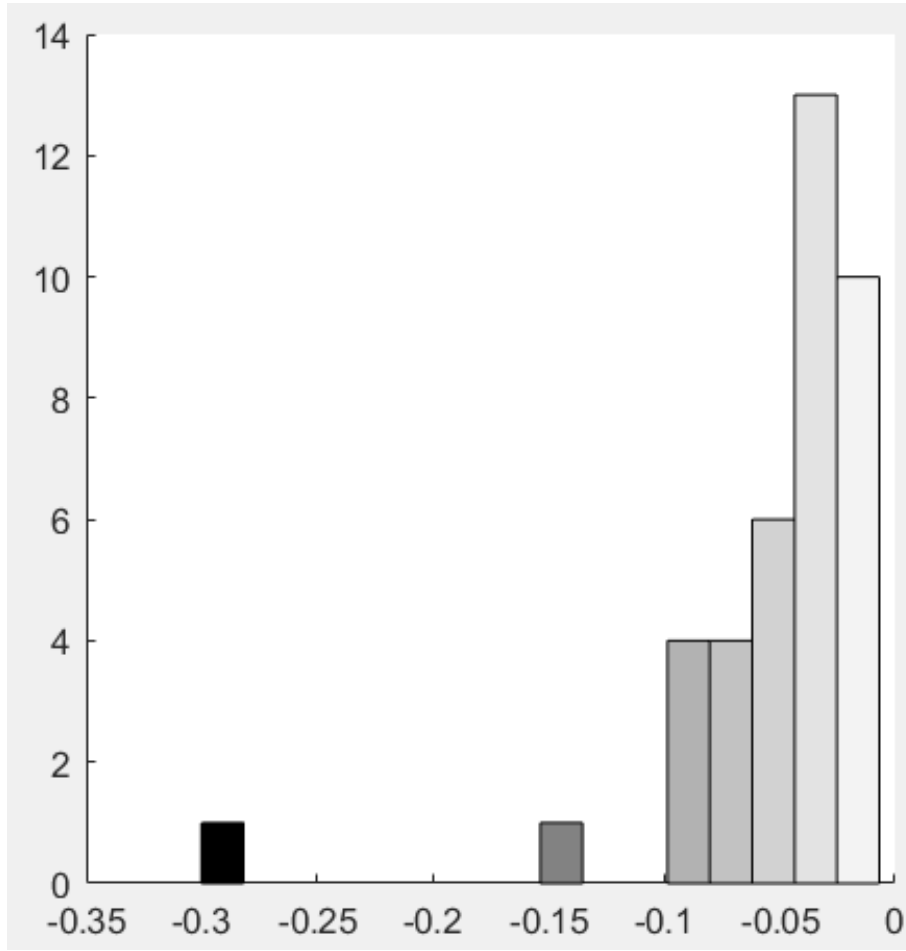


Figure 22 : Frequency distribution from Figure 21