

# Glucose tolerance is associated with differential expression of microRNAs in skeletal muscle: results from studies of twins with and without type 2 diabetes

Jette Bork-Jensen · Camilla Scheele · Daniel V. Christophersen · Emma Nilsson · Martin Friedrichsen · Denise S. Fernandez-Twinn · Louise G. Grunnet · Thomas Litman · Kim Holmstrøm · Birgitte Vind · Kurt Højlund · Henning Beck-Nielsen · Jørgen Wojtaszewski · Susan E. Ozanne · Bente K. Pedersen · Pernille Poulsen · Allan Vaag

Received: 9 July 2014 / Accepted: 6 October 2014 / Published online: 19 November 2014  
© Springer-Verlag Berlin Heidelberg 2014

## Abstract

**Aims/hypothesis** We aimed to identify microRNAs (miRNAs) associated with type 2 diabetes and risk of developing the disease in skeletal muscle biopsies from phenotypically well-characterised twins.

**Methods** We measured muscle miRNA levels in monozygotic (MZ) twins discordant for type 2 diabetes using arrays. Further investigations of selected miRNAs included target prediction, pathway analysis, silencing in cells and association analyses in a separate cohort of 164 non-diabetic MZ and dizygotic twins. The effects of elevated glucose and insulin levels on miRNA expression were examined, and the effect of low birthweight (LBW) was studied in rats.

**Results** We identified 20 miRNAs that were downregulated in MZ twins with diabetes compared with their non-diabetic co-twins. Differences for members of the miR-15 family (miR-15b and miR-16) were the most statistically significant, and these miRNAs were predicted to influence insulin signalling. Indeed, miR-15b and miR-16 levels were associated with levels of key insulin signalling proteins, miR-15b was associated with the insulin receptor in non-diabetic twins and knockdown of miR-15b/miR-16 in myocytes changed the levels of insulin signalling proteins. LBW in twins and undernutrition during pregnancy in rats were, in contrast to overt type 2 diabetes, associated with increased expression of miR-15b and/or miR-16. Elevated glucose and insulin suppressed miR-16 expression in vitro.

**Electronic supplementary material** The online version of this article (doi:10.1007/s00125-014-3434-2) contains peer-reviewed but unedited supplementary material, which is available to authorised users.

J. Bork-Jensen · D. V. Christophersen · E. Nilsson · M. Friedrichsen · P. Poulsen · A. Vaag  
Steno Diabetes Center, Gentofte, Denmark

J. Bork-Jensen (✉) · M. Friedrichsen · L. G. Grunnet · A. Vaag (✉)  
Department of Endocrinology (Diabetes and Metabolism),  
Rigshospitalet, sec. 7652, Tagensvej 20,  
DK-2200 Copenhagen N, Denmark  
e-mail: jette.bork.jensen@sund.ku.dk  
e-mail: allan.vaag@regionh.dk

C. Scheele · B. K. Pedersen  
Centre of Inflammation and Metabolism, Faculty of Health Sciences,  
University of Copenhagen, Copenhagen, Denmark

D. V. Christophersen · P. Poulsen  
Novo Nordisk, Bagsværd, Denmark

M. Friedrichsen · J. Wojtaszewski  
Department of Exercise and Sport Sciences,  
University of Copenhagen, Copenhagen, Denmark

D. S. Fernandez-Twinn · S. E. Ozanne  
University of Cambridge Metabolic Research  
Laboratories and MRC Metabolic Diseases Unit,  
Wellcome Trust-Institute of Metabolic Science,  
Addenbrooke's Treatment Centre, Addenbrooke's Hospital,  
Cambridge, UK

T. Litman  
Molecular Biomedicine, LEO Pharma, Ballerup, Denmark

K. Holmstrøm  
Bioneer, Hørsholm, Denmark

B. Vind · K. Højlund · H. Beck-Nielsen  
Odense University Hospital, Odense, Denmark

**Conclusions** Type 2 diabetes is associated with non-genetic downregulation of several miRNAs in skeletal muscle including miR-15b and miR-16, potentially targeting insulin signalling. The paradoxical findings in twins with overt diabetes and twins at increased risk of the disease underscore the complexity of the regulation of muscle insulin signalling in glucose homeostasis.

**Keywords** Insulin signalling · Low birthweight · MicroRNA · miR-15b · miR-16 · Muscle · Twins · Type 2 diabetes

### Abbreviations

DAVID	Database for Annotation Visualization and Integrated Discovery
DZ	Dizygotic
FDR	False-discovery rate
GIR	Glucose infusion rate
IGT	Impaired glucose tolerance
INSR	Insulin receptor
IPA	Ingenuity pathway analysis
LBW	Low birthweight
Limma	Linear models for microarray data
LNA	Locked nucleic acid
LP	Low protein
miRNA	MicroRNA
mTOR	Mechanistic target of rapamycin (serine/threonine kinase)
MZ	Monozygotic
NGT	Normal glucose tolerance
PIK3R1	Phosphoinositide 3-kinase R1 regulatory subunit 1 $\alpha$
PI3K	Phosphoinositide 3-kinase
$R_d$	Glucose disposal rate
$\dot{V}O_{2max}$	Maximal oxygen consumption rate

### Introduction

Type 2 diabetes is caused by multiple organ defects, with inadequate insulin secretion and insulin resistance being the most important. Skeletal muscle insulin resistance is of specific interest as muscle is the major site for glucose disposal [1]. The insulin signalling cascade is initiated by the binding of insulin to its receptor, which activates the key cellular processes of glucose metabolism, including glucose transport across the membrane and storage of glucose as muscle glycogen. Although the genetic influence on muscle insulin resistance cannot be disputed [2], non-genetic factors, including obesity, physical inactivity and low birthweight (LBW) [3–6], are important in controlling muscle insulin resistance [7–9].

Emerging evidence points towards microRNAs (miRNAs) as major players in the regulation of protein levels. These miRNAs are short single-stranded RNA molecules that regulate their target mRNAs mainly by translational repression and/or degradation [10]. We recently demonstrated that miR-483-3p, involved in adipose tissue development and lipid storage, is upregulated in adipose tissue from individuals born with LBW as well as in young adult rats exposed to a sub-optimal intrauterine environment [11]. Another recent study indicated that several miRNAs were differentially expressed in skeletal muscle from patients with type 2 diabetes [12], and Zhu et al recently demonstrated that overexpression of the miRNA let-7 results in insulin resistance and impaired glucose tolerance in rats, probably through repression of proteins in the insulin–phosphoinositide 3-kinase–mechanistic target of rapamycin (insulin–PI3K–mTOR) pathway [13]. Thus, miRNAs could therefore be important regulators of insulin signalling.

We have previously provided extensive proof-of-concept evidence for the powerful approach of using genetically identical monozygotic (MZ) twins discordant for type 2 diabetes to identify non-genetic metabolic and molecular defects in type 2 diabetes [4, 14]. When unravelling the complex underlying molecular mechanisms involved in the development of type 2 diabetes, it is important to distinguish between the primary mechanisms relevant to the development of type 2 diabetes and the secondary molecular alterations occurring as a consequence of the metabolic derangements including ‘glucotoxicity’ in hyperglycaemic patients with overt type 2 diabetes.

In the present study, we first aimed to identify altered miRNA levels of non-genetic origin in MZ twins discordant for type 2 diabetes. The top candidates identified were subsequently investigated in a larger group of phenotypically well-characterised twins without diabetes to uncover their role in skeletal muscle insulin action. Our comprehensive approach also included computational target prediction and in vitro target validation using antagonists, while the effects of elevated glucose and insulin levels on miRNA expression level were studied in vitro. Finally, we studied miRNA expression in a rat model of LBW.

### Methods

#### Participants

The MZ discordant twin population comprised 22 white MZ twins (11 pairs), aged 53–78 years, discordant for type 2 diabetes who were recruited through the Danish Twin Registry, University of Southern Denmark. Five pairs were from a previous cohort [15–17] where discordance for type 2 diabetes was recognised based on an OGTT. The additional six twin pairs were recruited based on their discordance for

type 2 diabetes. The recruitment and clinical examinations of all 11 pairs has been described previously [18]. The basic clinical and anthropometric measures are presented in Table 1. Based on a 2 h OGTT, nine of the non-diabetic co-twins had impaired glucose tolerance (IGT) and two had normal glucose tolerance (NGT).

The non-diabetic twin population was a subgroup of 164 MZ and same-sex dizygotic (DZ) twins (the number of individuals with available tissue material) from a previously described population [7] of 196 young and old twins (aged 25–32 and 58–66 years). Participant characteristics are displayed in Table 1.

All study participants gave informed consent and the study was carried out in accordance with the Declaration of Helsinki as revised in 2008.

### Clinical examination

In the MZ discordant twin population, insulin sensitivity was measured by a 2 h euglycaemic–hyperinsulinaemic clamp ( $40 \text{ mU m}^{-2} \text{ min}^{-1}$ ) and expressed as the mean glucose infusion rate (GIR) during the final 30 min steady-state period of the clamp. In the non-diabetic twin population,  $3\text{-}^3\text{H}$ -glucose was infused for the calculation of the peripheral glucose disposal rate ( $R_d$ ), and body composition was determined by dual-energy x-ray absorptiometry (DXA) scanning. A 2 h 75 g OGTT was performed in both populations and muscle biopsies (vastus lateralis) were excised under local anaesthesia (lidocaine), during basal fasting conditions using a Bergström needle with suction applied. The biopsies were frozen immediately in liquid nitrogen and stored at  $-80^\circ\text{C}$  for later analysis. In the non-diabetic twin population, physical

fitness was estimated as maximal oxygen consumption rate ( $\dot{V}\text{O}_{2\text{max}}$ ) calculated from the maximal load on ergometer bicycle [19]. More details can be found in previous publications of this cohort [7, 15–18].

### LNA arrays

For each of the discordant twins ( $n=22$ ),  $1 \mu\text{g}$  total RNA was isolated from a muscle biopsy (described in electronic supplementary material [ESM] methods) and each sample was run on a miRCURY locked nucleic acid (LNA) array (Exiqon, Vedback, Denmark) representing version 9.2 of the Sanger miRBase as described in the ESM Methods. Annotation was updated to miRBase version 14, and the data were normalised using normexp [20] and quantile normalisation [21] in R (version 2.9.1). The dataset has been deposited in the National Center for Biotechnology Information (NCBI) Gene Expression Omnibus [22], accession number GSE38835.

### Familial relationships and target analysis

The familial relationships between miRNAs were based on miRBase version 17. TargetScan 4.2 [23–25] was used to predict mRNA targets. The lists of targets were imported into Ingenuity pathway analysis (IPA) version 8.0 (IPA, QIAGEN, Redwood City, [www.qiagen.com/ingenuity](http://www.qiagen.com/ingenuity)) for canonical pathway analysis or the Database for Annotation, Visualization and Integrated Discovery (DAVID) 6.2. for a Kyoto Encyclopedia of Genes and Genomes (KEGG) pathway analysis [26]. The IPA results were corrected for multiple testing using the Benjamini–Hochberg method.

**Table 1** Clinical and metabolic characteristics of the study populations

Characteristic	Discordant monozygotic twin study			Non-diabetic twin study
	Diabetic twins	Non-diabetic co-twins	<i>p</i> value	
<i>n</i> (female/male)	11 (6/5)	11 (6/5)		164 (76/88)
<i>n</i> (NGT/IGT/T2D)	11 (0/0/11)	11 (2/9/0)		—
Zygoty (MZ/DZ)	—	—		90/74
Age (years)	68±8	68±8		42.9±17.1
Birthweight (g)	—	—		2,671±468
BMI ( $\text{kg/m}^2$ )	32.5±6.7	30.4±6.5	0.04	25.3±4
Fasting glucose (mmol/l)	10.6±2.1	6.3±0.5	<0.001	5.4±0.7
Glu120 (mmol/l)	19.5±3.5	9.0±1.7	<0.0001	6.5±1.7
GIR ( $\text{mg m}^{-2} \text{ min}^{-1}$ ) <sup>a</sup>	153.8±63.2	288.1±175.4	0.05	—
HbA <sub>1c</sub> (%) <sup>b</sup>	7.7±1.5	5.9±0.5	<0.003	—
HbA <sub>1c</sub> (mmol/mol)	61±16.4	41±5.5		—
Total fat (%)	—	—		24.7±9
$R_d$ ( $\text{mg kg}_{\text{FFM}}^{-1} \text{ min}^{-1}$ )	—	—		10.9±3.4
$\dot{V}\text{O}_{2\text{max}}$ ( $\text{ml kg}^{-2} \text{ min}^{-1}$ )	—	—		33.9±10.1

Data are represented as mean±SD  
<sup>a</sup> $n=9$  in each group; <sup>b</sup> $n=10$  in each group

FFM, fat-free mass; Glu120, 120 min glucose values from an OGTT

## Statistical methods

Differential expression levels in the discordant twins were assessed using a paired design matrix with linear models for microarray data (Limma) [27, 28] in R. Spot quality weights [29] were used and  $p$  values were adjusted with Benjamini–Hochberg’s false-discovery rate (FDR) [30]. Limma was used to analyse 170 miRNAs in a published online dataset [12] for differences between those with NGT, IGT and type 2 diabetes. Pearson intra-pair correlation coefficients were calculated using  $2n$ , as previously recommended [31]. The SAS ‘proc mixed’ procedure (SAS Institute, Cary, NC, USA) was used to perform multiple regression analysis with adjustments for zygosity and twin-pair status. If not otherwise stated, additional adjustment for age, sex,  $\dot{V}O_{2\max}$ , birthweight and total body fat percentage was performed. GraphPad Prism (GraphPad Software, La Jolla, CA, USA) was used to perform ANOVA.

## Human myocytes

**AntagomiR experiment** Proliferating myoblasts from five healthy donors (three men and two women) aged  $59 \pm 7$  years were transfected using Lipofectamine 2000 (Invitrogen, Carlsbad, CA, USA) with 10 nmol/l antagomiRs (Exiqon) targeting miR-15b/miR-16 or a non-targeting antagomiR (Exiqon) for 48 h. Simultaneous knockdown of miR-15b and miR-16 was performed to hinder a possible rescue effect that could occur when inhibiting them separately. Cells were harvested after 5–10 min incubation with 0, 1, 10 or 100 nmol/l insulin (Actrapid, Novo Nordisk, Bagsværd, Denmark) in Trizol (Invitrogen) for RNA isolation or in lysis buffer (Cell Signaling Technology, Beverly, MA, USA) for protein isolation. See the ESM Methods for further details.

**Short-term insulin experiment** See the ESM Methods for the description of this experiment.

## Rat protocol

Adult females were fed ad libitum with either a control diet (20% protein) or an isoenergetic low-protein (LP) (8% protein) diet (Arie Blok, Woerden, the Netherlands) during gestation and lactation as described previously [32]. At 3 months of age, 11 control males and 11 males from LP litters, each of the 22 rats being from an independent litter, were killed and vastus lateralis muscle biopsies were excised and stored for later use. All animal procedures were approved by the local animal ethical review committee and were carried out under compliance with the UK Animal (Scientific Procedures) Act 1986. The investigation conforms to the *Guide for the Care and Use of Laboratory Animals* published by the US National Institutes of Health (NIH Publication no. 85–23, revised 1996). See the ESM Methods for further details.

## L6 cells

L6 myoblasts were obtained from the American Type Culture Collection (CRL-1458, ATCC) and cultured in DMEM (Sigma-Aldrich, Poole, UK) with 10% fetal bovine serum, penicillin (100 units/ml), streptomycin (100 mg/ml) and glutamine (0.2 mmol/l), as previously described [33]. Semi-confluent cultures were treated with four different combinations of insulin (Actrapid; Novo Nordisk Insulin, Bagsværd, Denmark) and glucose levels, 0 nmol/l insulin and 5.6 mmol/l glucose, 100 nmol/l insulin and 5.6 mmol/l glucose, 0 nmol/l insulin and 25 mmol/l glucose or 100 nmol/l insulin and 25 mmol/l glucose, every 24 h for a total of 96 h until harvesting.

## Gene expression

**RNA isolation** This is described in the RNA isolation section of the ESM Methods. ABI-PRISM 7900 Sequence Detection system ([ABI] Applied Biosystems, Foster City, CA, USA) was used for both miRNA and mRNA detection. Expression was quantified using TaqMan probes for miRNA and primers from ABI or the Roche Universal probe library for mRNA. Details are described in the ESM Methods.

## Protein levels

**Muscle cell cultures** Levels of phosphoinositide 3-kinase R1 regulatory subunit 1  $\alpha$  (PIK3R1), Akt and p-Akt were measured using western blotting (Invitrogen). Insulin receptor (INSR) levels were measured using Meso Scale Discovery analysis (Meso Scale Discovery, Rockville, MD, USA).

**Muscle biopsies** The protein levels of INSR, IRS-1 and PIK3R1 were measured using western blotting as described in [2, 34]. Details of these methods are described in the ESM Methods.

## Results

### Differentially expressed miRNAs in MZ twins discordant for type 2 diabetes

To identify miRNAs related to type 2 diabetes in a non-genetic manner, we studied 571 human miRNAs in skeletal muscle from 11 pairs of MZ twins discordant for type 2 diabetes. The clinical and metabolic characteristics of these twins are summarised in Table 1. Twenty miRNAs were identified as significantly downregulated after correction for multiple comparisons ( $p_{\text{FDR}} < 0.1$ ) in twins with type 2 diabetes compared with their corresponding non-diabetic co-twins (Table 2). No miRNAs were significantly upregulated in the type 2 diabetes

**Table 2** Differentially expressed miRNAs in skeletal muscle biopsies from genetically identical twins with type 2 diabetes when compared with their non-diabetic co-twins

miRNA	Family	C	FC	<i>p</i>	<i>P</i> (FDR)	<i>r</i> <sub>Glu120</sub>	<i>P</i> - <i>r</i> <sub>Glu120</sub>	<i>r</i> <sub>HbA<sub>1c</sub></sub>	<i>P</i> - <i>r</i> <sub>HbA<sub>1c</sub></sub>
hsa-miR-15b	miR-15	a	-2.0	$2.4 \times 10^{-8}$	$8.0 \times 10^{-6}$	-0.64	0.04	-0.77	0.01
hsa-miR-16	miR-15	a	-1.7	$5.7 \times 10^{-6}$	$9.4 \times 10^{-4}$	-0.41	0.21	-0.63	0.05
hsa-miR-17	miR-17	b	-1.7	$7.3 \times 10^{-5}$	0.007	-0.53	0.1	-0.66	0.04
hsa-miR-451			-1.8	$9.0 \times 10^{-5}$	0.007	-0.55	0.08	-0.76	0.01
hsa-miR-106b	miR-17	c	-1.5	$2.2 \times 10^{-4}$	0.01	-0.57	0.07	-0.64	0.05
hsa-miR-103	miR-103		-1.5	$5.3 \times 10^{-4}$	0.03	-0.4	0.1	-0.67	0.03
hsa-miR-425			-1.6	$6.2 \times 10^{-4}$	0.03	-0.52	0.22	-0.52	0.12
hsa-miR-106a	miR-17	d	-1.7	$8.9 \times 10^{-4}$	0.04	-0.52	0.1	-0.67	0.03
hsa-miR-10b			-1.5	$1.0 \times 10^{-3}$	0.04	0.1	0.77	-0.1	0.77
hsa-miR-25	miR-25	c	-1.7	$1.3 \times 10^{-3}$	0.04	-0.4	0.11	-0.64	0.05
hsa-miR-93	miR-17	c	-1.5	$1.5 \times 10^{-3}$	0.04	-0.51	0.23	-0.55	0.1
hsa-miR-363		d	-1.7	$1.6 \times 10^{-3}$	0.04	-0.43	0.19	-0.76	0.01
hsa-miR-107	miR-103		-1.6	$1.8 \times 10^{-3}$	0.05	-0.56	0.07	-0.57	0.08
hsa-miR-191			-1.4	$1.9 \times 10^{-3}$	0.05	-0.56	0.07	-0.56	0.09
hsa-miR-30e*			-1.6	$2.2 \times 10^{-3}$	0.05	-0.2	0.56	-0.1	0.78
hsa-let-7i			-1.4	$3.2 \times 10^{-3}$	0.07	-0.25	0.46	-0.37	0.3
hsa-miR-20a	miR-17	b	-1.7	$3.4 \times 10^{-3}$	0.07	-0.41	0.2	-0.52	0.12
hsa-miR-223			-1.6	$4.1 \times 10^{-3}$	0.08	-0.55	0.08	-0.65	0.04
hsa-miR-92a	miR-25	bd	-1.4	$4.9 \times 10^{-3}$	0.09	-0.54	0.04	-0.59	0.08
hsa-miR-20b	miR-17	d	-1.5	$5.6 \times 10^{-3}$	0.09	-0.39	0.21	-0.61	0.06

The miR family names from miRBase demonstrate the relatedness between the miRNAs

Letters in 'C' show which miRNAs are from the same transcriptional cluster

FC, fold change; *p*(FDR), *p* values adjusted with Benjamini–Hochberg's false-discovery rate; *r*<sub>Glu120</sub>, intra-pair correlation coefficient between miRNA expression and 120 min OGTT glucose values; *r*<sub>HbA<sub>1c</sub></sub>, intra-pair correlation coefficient between miRNA expression and HbA<sub>1c</sub> values; *p*-*r*<sub>HbA<sub>1c</sub></sub> and *p*-*r*<sub>Glu120</sub>, the *p* values for the intra-pair correlation analyses

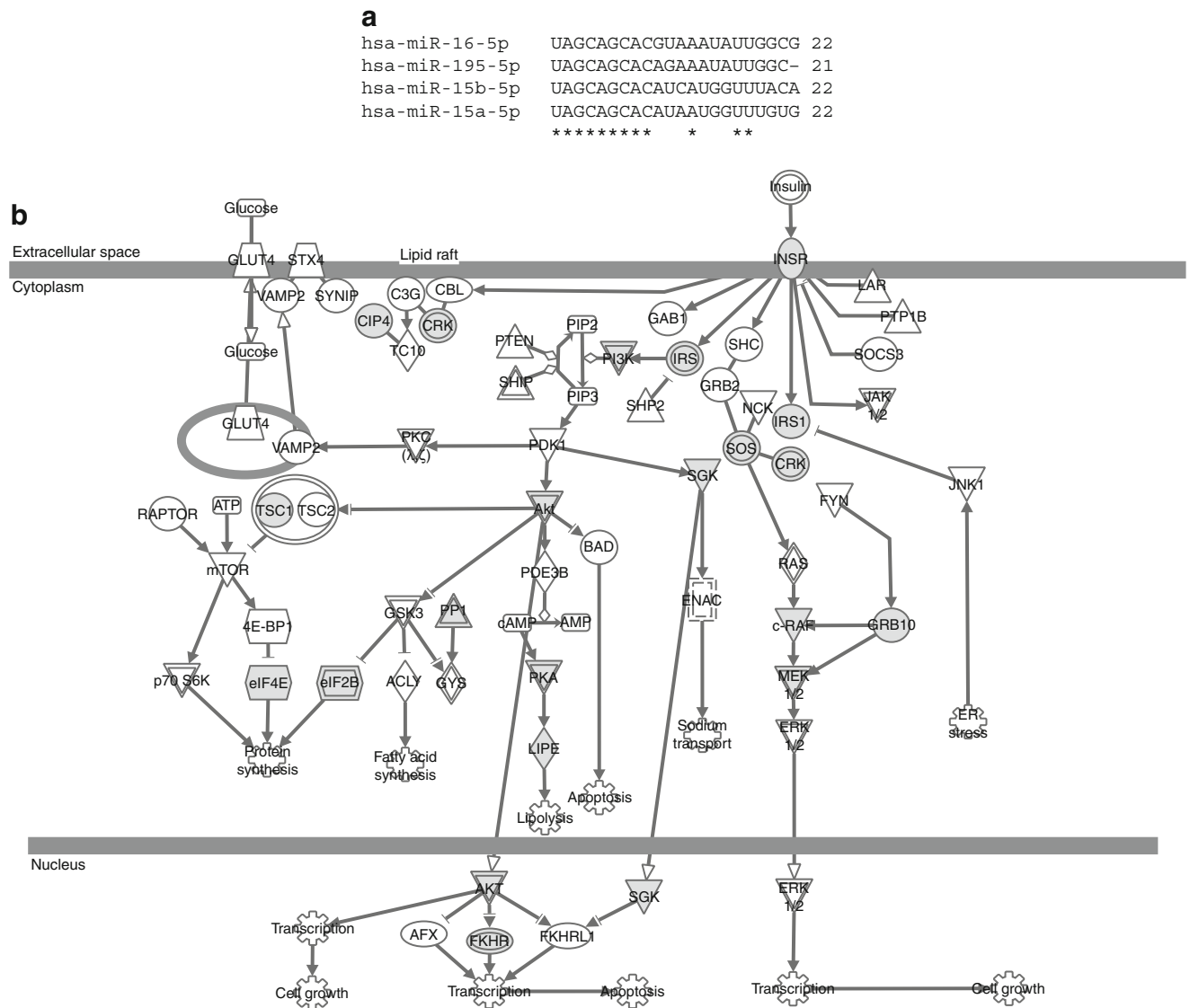
twins. No difference in the total miRNA expression levels were found between the diabetic twins and their non-diabetic co-twins when the medians of the log<sub>2</sub> transformed raw expression values were compared using a paired *t* test (*p*=0.25). Box and density plots are shown in ESM Figs 1 and 2, respectively. Intra-pair correlations between miRNA expression and HbA<sub>1c</sub> showed that ten of the 20 identified miRNAs, including miR-15b, were negatively correlated with HbA<sub>1c</sub> levels. Of these miR-15b, miR-451 and miR-363 remained significant after FDR correction for multiple comparisons (*p*<sub>FDR</sub><0.1) (Table 2). Similar intra-pair correlations showed that miR-15b alone was significantly negatively correlated with the 2 h post-OGTT glucose values. This result was not significant after FDR correction (*p*<sub>FDR</sub>=0.2) (Table 2).

The diabetes-dysregulated miR-15 family is involved in insulin signalling

The 20 identified miRNAs belong to 11 different miRNA families (ESM Table 1); miRNAs within the same family are predicted to target the same mRNAs. As shown in Table 2, the top-ranking miRNAs according to statistical significance were

miR-15b and miR-16. These both belong to the miR-15 family. The human miR-15 family consists of miR-15a, miR-15b, miR-16 and miR-195 (Fig. 1a), in addition miR-497 shares the seed sequence nucleotides 2–8. In humans, miR-15b and miR-16 originate from the same transcriptional cluster on chromosome 3 in the intron of *SMC4*, which encodes structural maintenance of chromosomes 4. In addition, miR-16 is transcribed from chromosome 13, where it is situated in the non-protein-coding region *DLEU2* (deleted in lymphocytic leukaemia 2) clustered together with miR-15a. TargetScan predicts 968 conserved mRNA targets for the miR-15 family, and analysing these targets using IPA showed a total of 20 pathways that contained significantly higher numbers of the predicted miR-15 family targets than expected by chance (*p*<sub>FDR</sub><0.05) (Table 3). Among these, the insulin signalling pathway had the most significant over-representation of miR-15 family targets (*p*<sub>FDR</sub>=0.004) (Fig. 1b and Table 3). This pathway analysis finding was confirmed using DAVID software, which was also used to perform additional pathway analyses on the predicted mRNA targets for each of the ten other miRNA families (ESM Table 1).





**Fig. 1** The miR-15 family and its targets in the INSR signalling pathway. **(a)** Alignment of the nucleotide sequences of the human miR-15 family members using CLUSTAL 2.0.12. Asterisks indicate conserved residues. **(b)** The INSR signalling pathway. Grey nodes indicate predicted targets of the miR-15 family (tuberous sclerosis 1 [TSC1], Raf-1 proto-oncogene, serine/threonine kinase [RAF1], serum/glucocorticoid regulated kinase 1 [SGK1], thyroid hormone receptor interactor 10 [TRIP10], v-crk avian sarcoma virus CT10 oncogene homolog-like [CRKL], PIK3R1, protein kinase, cAMP-dependent, regulatory, type II,  $\alpha$  [PRKAR2A], lipase,

hormone-sensitive [LIPE], protein phosphatase 1, regulatory [inhibitor] subunit 11 [PPP1R11], eukaryotic translation initiation factor 2B, subunit 2  $\beta$ , 39 kDa [eIF2B2], eukaryotic translation initiation factor 4E [eIF4E], growth factor receptor-bound protein 10 [GRB10], forkhead box O1 [FOXO1], IRS1, son of sevenless homolog 1 [Drosophila] [SOS1], eukaryotic translation initiation factor 2B, subunit 5  $\epsilon$ , 82 kDa [EIF2B5], Akt3, IRS2, INSR and mitogen-activated protein kinase kinase 1 [MAP2K1]. Additional information on the nodes in the pathway can be found in ESM Table 2. ER, endoplasmic reticulum

miR-15b and miR-16 regulate protein levels of insulin signalling molecules

Three prominent players of the insulin signalling pathway (*INSR*, *IRS1* and *PIK3R1*) were among the predicted miR-15b/-16 targets. To address the role of miR-15b and miR-16 in the control of insulin signalling proteins, we measured the protein and mRNA expression levels of these three predicted targets in muscle biopsies from the non-diabetic twin population.

We found miR-15b levels negatively associated with both *INSR* and *IRS-1* but not with *PIK3R1* protein levels when adjusted for confounding factors (Table 4). For miR-16, no significant associations with the levels of these proteins were observed. *IRS1* mRNA levels was negatively associated with miR-15b, but not with miR-16. No significant associations between miR-15b or miR-16 and the mRNA levels of *INSR* and *PIK3R1* were found (Table 4). Adjustments for fasting glucose levels and 2 h glucose values did not change any of the results.

**Table 3** Pathway analysis of the miR-15 family targets

Ingenuity canonical pathways	$p_{(FDR)}$
INSR signalling	0.0039
AMPK signalling	0.0045
PPAR $\alpha$ /RXR $\alpha$ activation	0.0045
TGF- $\beta$ signalling	0.0068
Wnt/ $\beta$ -catenin signalling	0.0126
IGF-1 signalling	0.0126
Molecular mechanisms of cancer	0.0126
mTOR signalling	0.0126
EIF2 signalling	0.0126
PI3K/Akt signalling	0.0126
BMP signalling pathway	0.0155
14-3-3-mediated signalling	0.0158
PTEN signalling	0.0245
Protein ubiquitination pathway	0.0339
Cell cycle regulation by BTG family proteins	0.0339
Axonal guidance signalling	0.0339
Ceramide signalling	0.0339
Mitotic roles of polo-like kinase	0.0355
Myc-mediated apoptosis signalling	0.0417
Cell cycle: G1/S checkpoint regulation	0.0417

IPA of the miR-15 family target genes predicted using TargetScan. Only pathways with  $p_{(FDR)} < 0.05$  are shown

AMPK, protein kinase, AMP-activated, alpha 1 catalytic subunit; BMP, bone morphogenetic protein; BTG, B-cell translocation gene; EIF2, eukaryotic translation initiation factor 2;  $p_{(FDR)}$ , Benjamini–Hochberg's multiple comparison adjusted  $p$  values; PPAR $\alpha$ /RXR $\alpha$ , peroxisome proliferator-activated receptor  $\alpha$ /retinoid X receptor  $\alpha$ ; PTEN, phosphatase and tensin homologue; WNT, wingless-type MMTV integration site family

To study the potential regulation of INSR and PIK3R1 protein and mRNA levels by miR-15b and miR-16, we transfected antisense inhibitors specific to these miRNAs into human primary myocytes, with insulin added 5–10 min prior to harvest. Using ANOVA models we found no general effect of insulin on protein levels and no interaction effects. We observed a general increase in the total INSR protein content following miR-15b/miR-16 inhibition ( $p=0.01$ ) and a general downregulation of PIK3R1 protein levels in response to miR-15b/16 inhibition ( $p=0.0002$ ) (ESM Fig. 3). The result on PIK3R1 was in line with the borderline positive association found between PIK3R1 protein levels and miR-16 in the non-diabetic twins. As miR-15b and miR-16 target multiple insulin signalling molecules (Fig. 1b), it is relevant to study the collective effect of their inhibition; to this end, we measured the levels of p-Akt/Akt after miR-15b/miR-16 inhibition (ESM Fig. 4). We did not observe any effect of miR-15b and miR-16 inhibition on p-Akt/Akt levels. However, this result was considered inconclusive due to large variations in the p-Akt measurements.

**Table 4** Impact of miR-15b and miR-16 on specific molecular targets in the 164 non-diabetic twins

Target	Effect	CI 95%	Change	$p$
INSR protein				
miR-15b	0.91	(0.86, 0.97)	9%↓	0.004
miR-16	0.93	(0.86, 1.00)	7%↓	0.06
<i>INSR</i> mRNA				
miR-15b	0.94	(0.87, 1.02)		0.1
miR-16	1.00	(0.92, 1.09)		1.0
IRS-1 protein				
miR-15b	0.82	(0.75, 0.88)	18%↓	<0.0001
miR-16	0.95	(0.87, 1.03)		0.2
<i>IRS-1</i> mRNA				
miR-15b	0.92	(0.86, 0.99)	8%↓	0.03
miR-16	0.95	(0.88, 1.02)		0.2
PIK3R1 protein				
miR-15b	0.97	(0.93, 1.02)		0.2
miR-16	1.04	(1.00, 1.08)	4%↑	0.07
<i>PIK3R1</i> mRNA				
miR-15b	0.92	(0.85, 1.01)	8%↓	0.07
miR-16	0.98	(0.90, 1.07)		0.6

Multivariate analysis of the effects of miR-15b or miR-16 on target mRNA and protein expression with adjustment for age, sex, total fat percentage,  $\dot{V}O_{2max}$ , birthweight, twin-pair and zygosity status

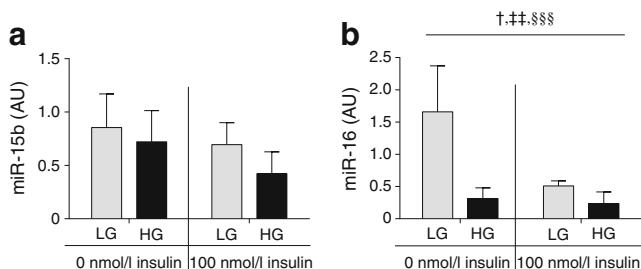
Effect, the effect on the response variable expressed as the change by 1 SD increase in either miR-15b or miR-16

#### Effects of high glucose and insulin levels on miRNA expressions in cell culture

Elevated glucose and insulin levels defining a diabetogenic environment might regulate miR-15b and miR-16. Short-term incubation of cultured human myocytes with 10 nmol/l insulin for 5, 10, 30, 60 or 120 min did not affect miR-15b or miR-16 levels (data not shown). We also tested the effect of high glucose and high insulin levels in L6 cells (a rat myoblast cell line) using a higher insulin concentration (100 nmol/l) with or without high glucose (high 25 mmol/l, low 5.6 mmol/l) for a prolonged time period of 96 h. Although the effects of high glucose ( $p=0.2$ ) and high insulin levels ( $p=0.2$ ) on miR-15b expression did not reach statistical significance in these cells (Fig. 2a), we found that high insulin ( $p=0.01$ ) and high glucose ( $p=0.003$ ) levels reduced the miR-16 levels (Fig. 2b).

#### Implications for intrauterine-dependent regulation of the miR-15 family

To further explore the potential reasons for dysregulation of the miR-15 family in type 2 diabetes, we measured the expression levels of miR-15b and miR-16 in the non-diabetic twins. In this cohort, we found no associations between miR-



**Fig. 2** The effect of high insulin and high glucose on miR-15b and miR-16 expression levels in L6 cells. Levels of miR-15b (a) and miR-16 (b) were measured in L6 cells after 96 h of stimulation with either low glucose and no insulin, high glucose no insulin, low glucose with high insulin or high glucose with high insulin. Data are mean±SD, *n*=3. *p* values from two-way ANOVA: †*p*=0.02 for interaction effect, ††*p*=0.01 for insulin effect, †††*p*=0.003 for glucose effect. AU, arbitrary expression unit; LG, low glucose (5.6 mmol/l); HG, high glucose (25 mmol/l)

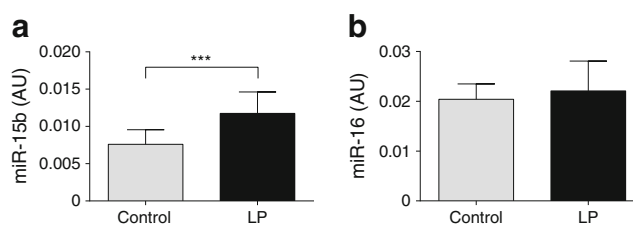
15b and miR-16 levels on one side and insulin action (*R<sub>d</sub>* clamp) or the 2 h post-OGTT glucose values on the other (data not shown). Interestingly, multiple regression analysis showed a negative association between birthweight and both miR-15b and miR-16 expression levels (Table 5). Total body fat percentage was positively associated with miR-16 but not miR-15b expression. Age, sex or  $\dot{V}O_{2max}$  values were not associated with miR-15b or miR-16 expression levels (Table 5). To study further the effect of a poor intrauterine environment on the expression of miR-15b and miR-16, we studied muscle tissue from 3-month-old male rat offspring from dams fed either an LP or a control diet [35, 36]. The LP offspring had lower body weights both at day 3 after birth (*p*=0.004) and at 3 months of

**Table 5** Factors associated with the expression of either miR-15b or miR-16 in skeletal muscle obtained from the non-diabetic twins

	Effect	95% CI	Change	<i>p</i>
<b>miR-15b</b>				
Age	0.97	(0.72, 1.28)		0.8
Sex	0.81	(0.62, 1.05)		0.1
$\dot{V}O_{2max}$	0.99	(0.88, 1.11)		0.9
Birthweight	0.87	(0.79, 0.96)	13%↓	0.005
Total fat percentage	1.11	(0.93, 1.34)		0.3
<b>miR-16</b>				
Age	1.28	(0.99, 1.64)		0.06
Sex	1.06	(0.83, 1.35)		0.6
$\dot{V}O_{2max}$	1.08	(0.97, 1.19)		0.2
Birthweight	0.87	(0.80, 0.95)	13%↓	0.002
Total fat percentage	1.27	(1.08, 1.48)	27%↑	0.003

The effects of age, sex,  $\dot{V}O_{2max}$ , birthweight, and total body fat percentage on the expression of either miR-15b or miR-16, investigated by multiple regression analyses adjusted for twin-pair and zygosity status

Effect, the effect on the response variable expressed as the change by 1 SD increase in either miR-15b or miR-16



**Fig. 3** The effect of maternal protein restriction on skeletal muscle expression levels of miR-15b and miR-16 in rats. miR-15b (a) and miR-16 (b) expression levels were measured in vastus lateralis muscle biopsies from 3-month-old male offspring of dams fed with low protein (*n*=11) and control dams (*n*=11). Data are mean±SD. \*\*\**p*<0.001 for the effect of LP from two-sided unpaired *t* tests. AU, arbitrary expression unit; LP, low protein

age (*p*<0.0001). Elevated miR-15b levels were found in the muscle of LP offspring (*p*<0.001) (Fig. 3a), whereas the levels of miR-16 were similar in the two groups (Fig. 3b).

### Discussion

In a unique cohort of 11 MZ twin pairs discordant for type 2 diabetes, we identified 20 miRNAs that were differentially expressed in the skeletal muscle of twins with type 2 diabetes compared with their non-diabetic identical twins. In silico analyses identified the two most significantly downregulated miRNAs in twins with diabetes, miR-15b and miR-16, as possible regulators of important metabolic functions including insulin signalling. The predicted insulin signalling targets of miR-15b and miR-16 included INSR, IRS-1 and PIK3R1, for which we demonstrated a likely biological role in vivo (for INSR and IRS-1) and in vitro (for INSR and p85). We found a significant positive association between LBW and both miR-15b and miR-16 in non-diabetic twins and elevated miR-15b levels in a rat model of LBW. Finally, we showed a downregulation of miR-16 by high glucose and insulin levels in cell cultures.

Interestingly, all of the 20 differentially expressed miRNAs in the MZ twins with overt type 2 diabetes were downregulated compared with their genetically identical twins, most of whom had IGT. In support of this we found eight of the 20 miRNAs, including miR-15b and miR-16, to be downregulated in singletons with overt type 2 diabetes when we compared their levels to those in singletons with IGT using an online dataset [12]. Differences between these studies may be explained by the selective identification of non-genetic differences in discordant MZ twins.

Diabetes is defined by the presence of hyperglycaemia, and we therefore tested the correlation between average glycaemic levels (HbA<sub>1c</sub>) and the expression levels of each of the 20 miRNAs. Although only three of these miRNAs, including miR-15b, showed a significant negative correlation with



HbA<sub>1c</sub> level after correction for multiple testing, we found the same trend for all the 20 miRNAs, suggesting that hyperglycaemia may be involved in the coordinated downregulation of miRNAs in twins with overt diabetes. Whether this downregulation represents, for example, secondary potentially deleterious changes due to hyperglycaemia, or plays a role in the compensation for insulin resistance via hyperglycaemia-induced glucose uptake [37] remains to be investigated.

A previous study in pancreatic beta cells showed upregulated miR-15a levels after hyperglycaemic exposure for 1 h, with subsequent downregulation after 3 days of exposure [38]. We found that long-term exposure to elevated insulin and glucose levels was associated with a downregulation of miR-16 but not miR-15b in L6 cells, which suggests differential regulation. Acute insulin stimulation for up to 120 min in human myocytes using a concentration of 10 nmol/l did not show any effect, supporting previous in vivo clamp results in humans [39].

Based on the presence of complementary binding sites for the miR-15 family in the 3'UTR of mRNAs, we predicted insulin signalling proteins including INSR, IRS-1 and PIK3R1 to represent important targets for miR-15b and miR-16. Indeed, our experiments in human myocytes showed that the levels of INSR and PIK3R1 protein were altered following inhibition of miR-15b/miR-16. INSR was upregulated, indicating that miR-15b/miR-16 represses *INSR* translation, whereas PIK3R1 was downregulated, indicating enhanced translation. Both miRNA-mediated down- [10] and upregulation [40, 41] of translation have previously been described. Increased PIK3R1 levels were previously reported to be associated with insulin resistance [42, 43], thus elevated miR-15b and miR-16 levels could contribute to insulin resistance through downregulation of INSR and a parallel upregulation of PIK3R1. The biological relevance of our results was demonstrated in the non-diabetic twins, with a negative association between levels of miR-15b and INSR, a borderline significant positive association between miR-16 and PIK3R1 and a highly significant negative association between miR-15b and IRS-1 protein levels. 3'UTR luciferase studies could be instrumental in providing more insights into the extent to which miR-15b and miR-16 bind to the 3' UTR regions of their predicted targets, and to determine the extent to which these miRNAs—alone or in concert with other miRNAs—may influence the expression of one or more insulin signalling proteins. Given the complex and unknown interactions of miR-15b and miR-16 with many other miRNAs, including the 20 miRNA we found downregulated in type 2 diabetes, such experiments will need to be addressed in future papers.

There are multiple routes via which the insulin signal travels [44, 45], and the predicted targets of miR-15b and miR-16 suggest several that could be interesting. Here, we

tested downstream signalling through p-Akt/Akt but reached no clear conclusion; thus, further studies will be needed to determine the specific route of action for these miRNAs as well as to determine their role in the other pathways containing their targets, several of which are known or suspected to influence glucose metabolism. We did not find any significant correlations between levels of miR-15b and miR-16 and in vivo peripheral insulin resistance in the non-diabetic twins. This may suggest that the absolute muscle expression level of these miRNAs plays only a minor role in the control of in vivo whole-body insulin action or that the potential effects need unmasking by adverse 'diabetogenic' lifestyle conditions.

In our large cohort of non-diabetic twins, we observed a negative association between birthweight and miR-15b and miR-16 levels, which was further supported by elevated miR-15b levels in an LBW rat model. The lack of significantly elevated miR-16 levels in the rat model could reflect interspecies differences in the regulation of the two clusters from which the miR-15 family are transcribed. The upregulation of miR-15b and miR-16 in twins with LBW, and the opposing downregulation in the MZ twins with diabetes, is to some extent paradoxical as LBW is associated with increased risk of developing type 2 diabetes. It suggests differential regulation as well as a potential impact of miR-15b and miR-16 at different stages in the life-long development of type 2 diabetes. This is supported by the finding of upregulated miR-15b and miR-16 levels in individuals with IGT when compared with both individuals with NGT and those with type 2 diabetes in an independent online dataset [12]. In addition, we previously reported a similar differential regulation of insulin signalling genes in patients with overt type 2 diabetes compared with their first-degree relatives which, similar to individuals with IGT and individuals born with LBW, have an increased risk of developing T2D [46]. Whether an adverse intrauterine environment directly alters miR-15b and miR-16 levels and the extent to which these miRNAs play a role in the development of insulin resistance in individuals with an increased risk of developing type 2 diabetes or whether they perhaps work to counteract the enhanced activity in the insulin signalling pathway that we have previously observed in insulin-resistant individuals [47] remains to be disclosed by future studies.

In conclusion, we identified 20 downregulated miRNAs including miR-15b and miR-16 in twins with overt type 2 diabetes compared with their genetically identical non-diabetic co-twins. In a larger cohort of non-diabetic twins, LBW was somewhat paradoxically associated with upregulation of miR-15b and miR-16 levels. Our results indicate that miR-15b and miR-16 may regulate key insulin signalling protein levels. Additional studies are needed to understand not only the role of the miR-15 family in the development of insulin resistance and type 2 diabetes, but also the distinct or interactive roles of the additional 18 downregulated miRNAs in type 2 diabetes.

**Acknowledgements** We thank all the study participants. In addition, the technical assistance of M. Modest, Steno Diabetes Center, Denmark, and the comments and suggestion to the discussion by E. A. Richter, Department of Exercise and Sport Sciences, University of Copenhagen, Denmark, are gratefully acknowledged.

**Funding** JB-J was supported by a grant from the Danish PhD School of Molecular Metabolism. The study was supported by grants from the Danish Medical Research Council, the Danish Strategic Research Council. The Novo Nordisk Foundation, the Danish Ministry of Science, Technology and Innovation. DSF-T was supported by the Biotechnology and Biological Sciences Research Council project grant BB/F-15364/1. SEO is a British Heart Foundation Senior Fellow (FS/09/029/27902). K. Højlund was supported by grants from the Danish Medical Research Council and the Danish Council for Independent Research (Sapere Aude, DFF Starting Grant), and the Excellence Grant 2009 from the Novo Nordisk Foundation.

**Duality of interest** JB-J has received a salary as an employee at Steno Diabetes Center. DVC has received salary as an employee at Novo Nordisk. JB-J, MF, PP, AV and LGG own Novo Nordisk shares. TL receives a salary as an employee at LEO Pharma. HB-N has received research funding from Novo Nordisk. PP receives a salary as an employee at Novo Nordisk. AV has received income from Novo Nordisk. The remaining authors have no conflicting interests.

**Contribution statement** JB-J and AV are guarantors for this work and, as such, had full access to all the data in the study and take responsibility for the integrity of the data and the accuracy of the data analysis.

JB-J contributed to conception and design, analysed and interpreted data and wrote the manuscript. CS, DVC, EN, MF, DSF-T, K. Holmstrøm, BV, K. Højlund, PP and JW acquired and researched the data. TL, LGG, SEO, HB-N and BKP interpreted the data. AV contributed to the conception, design and interpretation. All authors have revised the manuscript critically for important intellectual content and given final approval of the version to be published.

## References

- Shulman GI, Rothman DL, Jue T, Stein P, DeFronzo RA, Shulman RG (1990) Quantitation of muscle glycogen synthesis in normal subjects and subjects with non-insulin-dependent diabetes by <sup>13</sup>C nuclear magnetic resonance spectroscopy. *N Engl J Med* 322:223–228
- Rung J, Cauchi S, Albrechtsen A et al (2009) Genetic variant near IRS1 is associated with type 2 diabetes, insulin resistance and hyperinsulinemia. *Nat Genet* 41:1110–1115
- Phillips DI, Barker DJ, Hales CN, Hirst S, Osmond C (1994) Thinness at birth and insulin resistance in adult life. *Diabetologia* 37:150–154
- Poulsen P, Vaag AA, Kyvik KO, Møller JD, Beck-Nielsen H (1997) Low birth weight is associated with NIDDM in discordant monozygotic and dizygotic twin pairs. *Diabetologia* 40:439–446
- Alibegovic AC, Sonne MP, Højbjerg L et al (2010) Insulin resistance induced by physical inactivity is associated with multiple transcriptional changes in skeletal muscle in young men. *Am J Physiol Endocrinol Metab* 299:E752–E763
- Karakelides H, Irving BA, Short KR, O'Brien P, Nair KS (2010) Age, obesity, and sex effects on insulin sensitivity and skeletal muscle mitochondrial function. *Diabetes* 59:89–97
- Poulsen P, Levin K, Petersen I, Christensen K, Beck-Nielsen H, Vaag A (2005) Heritability of insulin secretion, peripheral and hepatic insulin action, and intracellular glucose partitioning in young and old Danish twins. *Diabetes* 54:275–283
- Mayer EJ, Newman B, Austin MA et al (1996) Genetic and environmental influences on insulin levels and the insulin resistance syndrome: an analysis of women twins. *Am J Epidemiol* 143:323–332
- Florez JC (2008) Newly identified loci highlight beta cell dysfunction as a key cause of type 2 diabetes: where are the insulin resistance genes? *Diabetologia* 51:1100–1110
- Bartel DP (2004) MicroRNAs: genomics, biogenesis, mechanism, and function. *Cell* 116:281–297
- Ferland-McCollough D, Fernandez-Twinn DS, Cannell IG et al (2012) Programming of adipose tissue miR-483-3p and GDF-3 expression by maternal diet in type 2 diabetes. *Cell Death Differ* 19:1003–1012
- Gallagher IJ, Scheele C, Keller P et al (2010) Integration of microRNA changes in vivo identifies novel molecular features of muscle insulin resistance in type 2 diabetes. *Genome Med* 2:9
- Zhu H, Shyh-Chang N, Segre AV et al (2011) The Lin28/let-7 axis regulates glucose metabolism. *Cell* 147:81–94
- Vaag A, Henriksen JE, Madsbad S, Holm N, Beck-Nielsen H (1995) Insulin secretion, insulin action, and hepatic glucose production in identical twins discordant for non-insulin-dependent diabetes mellitus. *J Clin Invest* 95:690–698
- Poulsen P, Levin K, Beck-Nielsen H, Vaag A (2002) Age-dependent impact of zygosity and birth weight on insulin secretion and insulin action in twins. *Diabetologia* 45:1649–1657
- Poulsen P, Grønnet LG, Pilgaard K et al (2009) Increased risk of type 2 diabetes in elderly twins. *Diabetes* 58:1350–1355
- Ling C, Poulsen P, Carlsson E et al (2004) Multiple environmental and genetic factors influence skeletal muscle PGC-1alpha and PGC-1beta gene expression in twins. *J Clin Invest* 114:1518–1526
- Ribel-Madsen R, Fraga MF, Jacobsen S et al (2012) Genome-wide analysis of DNA methylation differences in muscle and fat from monozygotic twins discordant for type 2 diabetes. *PLoS One* 7:e51302
- Clausen JP, Oxhøj H, Hansen JF, Pedersen-Bjerggaard O, Henningsen P, Uhenholdt A (1980) Exercise test and exercise ECG in the diagnosis and treatment of ischemic heart disease. *Ugeskr Laeger* 142:1743–1749, article in Dutch
- Ritchie ME, Silver J, Oshlack A et al (2007) A comparison of background correction methods for two-colour microarrays. *Bioinformatics* 23:2700–2707
- Bolstad BM, Irizarry RA, Astrand M, Speed TP (2003) A comparison of normalization methods for high density oligonucleotide array data based on variance and bias. *Bioinformatics* 19:185–193
- Edgar R, Domrachev M, Lash AE (2002) Gene Expression Omnibus: NCBI gene expression and hybridization array data repository. *Nucleic Acids Res* 30:207–210
- Lewis BP, Burge CB, Bartel DP (2005) Conserved seed pairing, often flanked by adenosines, indicates that thousands of human genes are microRNA targets. *Cell* 120:15–20
- Grimson A, Farh KK, Johnston WK, Garrett-Engel P, Lim LP, Bartel DP (2007) MicroRNA targeting specificity in mammals: determinants beyond seed pairing. *Mol Cell* 27:91–105
- Friedman RC, Farh KK-H, Burge CB, Bartel DP (2009) Most mammalian mRNAs are conserved targets of microRNAs. *Genome Res* 19:92–105
- Huang W, Sherman BT, Lempicki RA (2009) Systematic and integrative analysis of large gene lists using DAVID bioinformatics resources. *Nat Protoc* 4:44–57
- Smyth GK (2004) Linear models and empirical bayes methods for assessing differential expression in microarray experiments. *Stat Appl Genet Mol Biol* 3: Article 3
- Smyth GK, Michaud J, Scott HS (2005) Use of within-array replicate spots for assessing differential expression in microarray experiments. *Bioinformatics* 21:2067–2075

29. Smyth GK, Yang YH, Speed T (2003) Statistical issues in cDNA microarray data analysis. *Methods Mol Biol* 224:111–136
30. Benjamini Y, Hochberg Y (1995) Controlling the false discovery rate: a practical and powerful approach to multiple testing. *J R Stat Soc Ser B Methodol* 57:289–300
31. Bring J, Wernroth L (1999) Inefficient analysis of twin data: is there an association between diabetes and birth weight? *Diabetologia* 42: 898–899
32. Fernandez-Twinn DS, Ekizoglou S, Gusterson BA, Luan J, Ozanne SE (2007) Compensatory mammary growth following protein restriction during pregnancy and lactation increases early-onset mammary tumor incidence in rats. *Carcinogenesis* 28:545–552
33. Loizou CL, Ozanne SE, Hales CN (1999) The effect of insulin on delta5 desaturation in hepG2 human hepatoma cells and L6 rat muscle myoblasts. *Prostaglandins Leukot Essent Fat Acids* 61:89–95
34. Ribel-Madsen R, Poulsen P, Holmkvist J et al (2010) Impact of rs361072 in the phosphoinositide 3-kinase p110beta gene on whole-body glucose metabolism and subunit protein expression in skeletal muscle. *Diabetes* 59:1108–1112
35. Fernandez-Twinn DS, Wayman A, Ekizoglou S, Martin MS, Hales CN, Ozanne SE (2005) Maternal protein restriction leads to hyperinsulinemia and reduced insulin-signaling protein expression in 21-mo-old female rat offspring. *Am J Physiol Regul Integr Comp Physiol* 288:R368–R373
36. Fernandez-Twinn DS, Ekizoglou S, Wayman A, Petry CJ, Ozanne SE (2006) Maternal low-protein diet programs cardiac beta-adrenergic response and signaling in 3-mo-old male offspring. *Am J Physiol Regul Integr Comp Physiol* 291:R429–R436
37. Vaag A, Damsbo P, Hother-Nielsen O, Beck-Nielsen H (1992) Hyperglycaemia compensates for the defects in insulin-mediated glucose metabolism and in the activation of glycogen synthase in the skeletal muscle of patients with type 2 (non-insulin-dependent) diabetes mellitus. *Diabetologia* 35:80–88
38. Sun LL, Jiang BG, Li WT, Zou JJ, Shi YQ, Liu ZM (2011) MicroRNA-15a positively regulates insulin synthesis by inhibiting uncoupling protein-2 expression. *Diabetes Res Clin Pract* 91:94–100
39. Granjon A, Gustin MP, Rieusset J et al (2009) The microRNA signature in response to insulin reveals its implication in the transcriptional action of insulin in human skeletal muscle and the role of a sterol regulatory element-binding protein-1c/myocyte enhancer factor 2C pathway. *Diabetes* 58:2555–2564
40. Srikantan S, Marasa BS, Becker KG, Gorospe M, Abdelmohsen K (2011) Paradoxical microRNAs: individual gene repressors, global translation enhancers. *Cell Cycle* 10:751–759
41. Vasudevan S, Tong Y, Steitz JA (2007) Switching from repression to activation: microRNAs can up-regulate translation. *Science* 318: 1931–1934
42. Terauchi Y, Tsuji Y, Satoh S et al (1999) Increased insulin sensitivity and hypoglycaemia in mice lacking the p85 alpha subunit of phosphoinositide 3-kinase. *Nat Genet* 21:230–235
43. Draznin B (2006) Molecular mechanisms of insulin resistance: serine phosphorylation of insulin receptor substrate-1 and increased expression of p85alpha: the two sides of a coin. *Diabetes* 55:2392–2397
44. Sylow L, Kleinert M, Pehmoller C et al (2014) Akt and Rac1 signaling are jointly required for insulin-stimulated glucose uptake in skeletal muscle and downregulated in insulin resistance. *Cell Signal* 26:323–331
45. Taniguchi CM, Emanuelli B, Kahn CR (2006) Critical nodes in signaling pathways: insights into insulin action. *Nat Rev Mol Cell Biol* 7:85–96
46. Palsgaard J, Brons C, Friedrichsen M et al (2009) Gene expression in skeletal muscle biopsies from people with type 2 diabetes and relatives: differential regulation of insulin signaling pathways. *PLoS One* 4:e6575
47. Storgaard H, Song XM, Jensen CB et al (2001) Insulin signal transduction in skeletal muscle from glucose-intolerant relatives of type 2 diabetic patients [corrected]. *Diabetes* 50:2770–2778