

Fluoroethylene Carbonate and Vinylene Carbonate Reduction: Understanding Lithium-ion Battery Electrolyte Additives and Solid Electrolyte Interphase Formation

Alison L. Michan,[†] Bharathy. S. Parimalam,[‡] Michal Leskes,[†] Rachel N. Kerber,[†] Taeho Yoon,[‡] Clare P. Grey,[†] and Brett L. Lucht^{*,‡}

Department of Chemistry, University of Cambridge, Lensfield Road, Cambridge, CB2 1EW, United Kingdom, and University of Rhode Island, Kingston, RI 02881

E-mail: blucht@chm.uri.edu

Abstract

We have synthesized the reduction products of fluoroethylene carbonate (FEC) and vinylene carbonate (VC) via lithium naphthalenide reduction. By analyzing the resulting solid precipitates and gas evolution, our results confirm that both FEC and VC decomposition products include HCO_2Li , $\text{Li}_2\text{C}_2\text{O}_4$, Li_2CO_3 , and polymerized VC. For FEC, our experimental data supports a reduction mechanism where FEC reduces to form VC and LiF, followed by subsequent VC reduction. In the FEC reduction product, HCO_2Li , $\text{Li}_2\text{C}_2\text{O}_4$, and Li_2CO_3 were found in smaller quantities than in the VC reduction product, with no additional fluorine environments being detected by solid-state nuclear magnetic resonance or X-ray photoelectron spectroscopy analysis. With these additives being practically used in higher (FEC) and lower (VC) concentrations in the base electrolytes of lithium-ion batteries, our results suggest that the different relative ratios of the inorganic and organic reduction products formed by their decomposition may be relevant to the chemical composition and morphology of the solid electrolyte interphase formed in their presence.

Introduction

Additives are widely used to improve performance of Li-ion batteries, offering an economically viable method of performance enhancement compatible with existing manufacturing infrastructure.¹ Generally, the function of additives is sacrificial: they are reduced at different voltage potentials compared to the base electrolytes to which they are added, forming decomposition products that are incorporated into a protective layer on electrodes.¹⁻⁵ This protective layer is called the solid electrolyte interphase (SEI).^{6,7} The formation of a stable SEI is essential for all Li-ion batteries, preventing further electrolyte decomposition, thereby underlying capacity retention.^{1,5-8} The SEI also represents an electronically insulating barrier between the electrodes and electrolyte, with its composition, thickness, and structure influencing the lithium transport across the interphase.^{9,10} The performance enhancement achieved by the use of additives in the base electrolyte of Li-ion batteries is therefore linked to the chemical species formed in their decomposition which are incorporated into the SEI. A fundamental understanding of how specific additives improve and alter the SEI would allow further

insight into favourable SEI properties.

Two additives that have been widely studied include fluoroethylene carbonate (FEC) and vinylene carbonate (VC). These additives have been used with electrode materials including Si, improving capacity retention.^{5,11-18} Although it is widely accepted that these additives improve performance, there remains some debate regarding their decomposition mechanisms and the resulting SEI. It is believed that one key aspect of their favourable SEI formation is due to their decomposition into semicarbonates or organic species.^{1,4,19-23} Theoretical predictions indicate FEC and VC may yield very similar reduction products,²⁴⁻²⁶ and a key difference between these additives is thought to relate to LiF as a major species in the presence of FEC.^{13,27,28} Typical concentrations achieving performance enhancement differ, with VC used in lower concentrations of approximately 2-5% compared with FEC that can be used in higher concentrations up to 50% FEC.^{1,5,16,18,29}

Practically, the SEI layer is extremely air-sensitive.^{30,31} Moreover, with a thickness of less than 100 nm it is very difficult to study experimentally. Here, our strategy is to synthesize the reduction products of FEC and VC in order to experimentally confirm their

reduction products. Lithium naphthalenide (Li-Nap), a well-known reducing agent, is known to react with solvents in a similar manner to those which may occur on lithiated anodes.³² It is used here to reduce FEC and VC, modelling a reduction process in a similar manner to that which may occur in a lithium-ion battery. Solid products are analyzed with X-ray photoelectron spectroscopy (XPS), solid-state NMR (ssNMR), and Fourier transform infrared spectroscopy (FTIR). Gas evolution is monitored using gas chromatography mass spectrometry (GC-MS). The many techniques provide chemical signatures for future work. Viable reactions to form the detected decomposition products are proposed. For FEC, we propose a reduction scheme where FEC reduces to form LiF and VC, followed by further reduction of VC to polymerized VC (poly(VC)). The poly(VC) contains repeating EC units joined by crosslinking sites; our analysis shows no evidence for F-C bonds in the polymer. HCO_2Li , $\text{Li}_2\text{C}_2\text{O}_4$, and Li_2CO_3 , are also found in small quantities. For VC, we detect lithium environments of HCO_2Li , $\text{Li}_2\text{C}_2\text{O}_4$, and Li_2CO_3 , in addition to poly(VC).

Methods

Synthesis. All reagents were used as obtained, without further purification. Battery-grade VC and FEC were obtained from BASF. Naphthalene (99+%, Scintillation grade) and THF (Anhydrous, 99.9%) were purchased from Acros organics. Lithium discs were obtained from MTI Corporation. Preparation of the reducing agent and the reduction reaction were carried out inside a nitrogen-filled glovebox. Li-Nap (0.546 M) solution in THF was prepared with 10 mol% excess naphthalene. Lithium foils were added to naphthalene solution of THF and stirred overnight at room temperature. The solution turned green in a few minutes after the addition of lithium metal and became dark green after stirring overnight.

1.52 g of FEC was reduced with 1 molar equivalent of Li-Nap. The solution turned yellowish brown immediately and left under stirring overnight. The overhead gas was analyzed using GC-MS. Precipitate was separated with centrifugal separation and washed with diethyl ether. It was further dried under vacuum overnight at room temperature and produced 1.44 g of light yellow powder.

1.24 g of VC was reduced with 1 molar equivalent of Li-Nap. The solution turned dark brown immediately and left under stirring overnight. The overhead gas was analyzed using GC-MS. Precipitate was separated with centrifugal separation and washed with diethyl ether. It was further dried under vacuum overnight at room temperature and produced 1.50 g of brown powder.

The synthesis was performed using both deuterated and non-deuterated naphthalene yielding two sets of samples.

XPS. XPS spectra of the dried precipitates were acquired using a thermo scientific K-alpha XPS instrument. Samples were made into circular pellets with a press and transferred from the glovebox to the XPS chamber using a vacuum transfer module without exposure to air. C 1s, O 1s and Li 1s spectra were obtained from the VC precipitate, whereas C 1s, O 1s, Li 1s and F1s spectra were acquired from the FEC precipitate. An Argon flood gun was used to avoid surface charge accumulation during sample analysis. The binding energy was corrected based on the C 1s of hydrocarbon at 284.8 eV. The data was processed and analyzed using the Thermo Advantage XPS Peak 4.1 and the Origin software.

ssNMR. Multinuclear ssNMR spectra were obtained on 16.4 T Bruker Avance III 700 MHz and 11.7 T Bruker Avance III 500 MHz spectrometers. Samples were packed in an Ar glovebox (typically O_2 and $\text{H}_2\text{O} < 0.1$ ppm), avoiding any exposure to ambient air, into rotors of 1.3 mm, 3.2 mm, and 4 mm outer diameters. Magic-angle spinning (MAS) frequencies ranged from 10 kHz to 60 kHz, spinning under N_2 . ^1H and ^{13}C chemical

shifts were externally referenced to adamantane (^1H 1.9 ppm, ^{13}C 38.5 ppm, CH_2), and ^7Li and ^{19}F to LiF (^7Li -1 ppm, ^{19}F -204 ppm).^{33,34} The data were processed using the Bruker TOPSPIN software and analyzed using the dmfit software.³⁵ Typical radio frequency (RF) field strengths used were (^1H) 90–100 kHz, (^7Li) 80–125 kHz, (^{19}F) 80–125 kHz, and (^{13}C) 80–120 kHz.

Each of the FEC and VC precipitates were investigated using ^1H , ^7Li , and ^{19}F ssNMR, using 1.3 mm rotors and 60 kHz spinning frequency. ^{13}C ssNMR experiments were performed using larger 3.2 mm and 4 mm rotors and spinning frequencies ranging from 10 to 12 kHz. The larger samples provided greater sensitivity. The ^{13}C spectra were acquired using swept-frequency two-pulse phase modulation (swfTPPM)³⁶ ^1H decoupling at 80–100 kHz. Direct excitation ^{13}C experiments provided quantitative information. ^1H - ^{13}C , ^7Li - ^{13}C , and ^{19}F - ^{13}C correlation experiments were used to probe spatial proximity of these nuclei by transferring magnetization from ^1H , ^7Li , and ^{19}F nuclei by cross polarization to ^{13}C nuclei. Dipolar dephasing (interrupted decoupling) ^1H - ^{13}C cross polarization experiments allowed differentiation between protonated and non-protonated environments.^{34,37} Further ssNMR experimental details are given in the Supporting Information.

FTIR. FTIR analysis was performed on each of the precipitates prepared with non-deuterated naphthalene. FTIR spectra of the dried precipitates were acquired on a Bruker Tensor 27 spectrometer, equipped with germanium crystal, in attenuated total reflectance (IR-ATR) mode. Samples were transferred using air-tight vials and the spectrometer was operated inside a nitrogen filled glovebox to avoid sample exposure to ambient air. Each spectrum was acquired with 128 scans from 700 cm^{-1} to 4000 cm^{-1} at the spectral resolution of 4 cm^{-1} . The data was processed and analyzed using the OPUS and Origin software.

GC-MS analysis of gases. The analysis of evolved gases during the reaction was performed on thermo trace GC-Ultra equipped with Agilent poroplot amines column and a mass selective detector-ISQ. Gas analysis was performed by evacuating the head space of the reaction flask with a 10 μL GC syringe. Helium was used as carrier gas at a flow rate of 1.5 mL/min. The initial column temperature was 50 $^\circ\text{C}$, and the temperature was ramped at 10 $^\circ\text{C}/\text{min}$ to 220 $^\circ\text{C}$ and held at that temperature for 20 min with the total run time of 37 min. The mass spectra obtained on these gases were compared to the NIST library to determine their molecular structures.

Dilute reduction reactions. 8.00 mL of 0.273 M FEC in THF was stirred vigorously and 1.00 mL of 0.546 M Lithium naphthalenide solution in THF was added drop by drop to the solution at room temperature. The dark green color of the lithium naphthalenide disappeared instantaneously as it contacted the FEC solution and the reaction mixture turned turbid yellow from clear and colorless. The reaction mixture was analyzed with Agilent 6890-5973N GC equipped with an Agilent 5973N mass selective detector. Helium was used a carrier gas at a flow rate of 24 mL/min. The initial column temperature was 40 $^\circ\text{C}$, and the temperature was ramped at 10 $^\circ\text{C}/\text{min}$ to 200 $^\circ\text{C}$ and held at that temperature for 2 minutes with the total run time of 18 minutes. The mass spectra obtained were compared to the NIST library to determine their molecular structures.

Computational Methods. Chemical shifts were calculated using density functional theory (DFT) using Gaussian 09³⁸ and estimated using ChemNMR implemented in ChemBioDraw 13.0, see Supporting Information Table S1. ChemNMR approximates ^{13}C and ^1H chemical shifts with respect to TMS. For all DFT calculations the hybrid functional B3LYP^{39,40} and 6-311G++(d,p) basis set were used,^{41,42} in combination with tight convergence. Frequency calculations were performed to confirm ground state convergence. The absolute NMR shift values were referenced to adamantane and LiF as in the experiment. Further computational details are given in the Supporting Information.

Results

XPS. The chemical composition of the FEC and VC precipitates is first examined by XPS, with Figure 1 showing the XPS spectra of C1s, O1s, and F1s for each

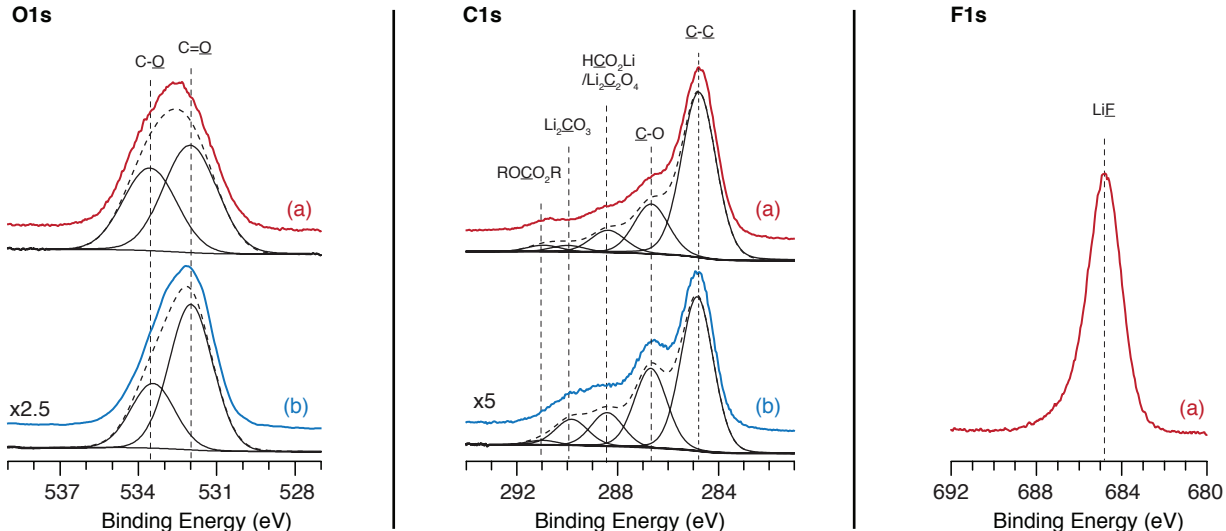


Figure 1: XPS spectra of the (a) FEC and (b) VC precipitates obtained through reduction of FEC and VC using deuterated naphthalene. Deconvolutions of the spectra are shown in black.

of the FEC and VC precipitates. The relative elemental concentrations of the FEC and VC precipitates are summarized in Table 1 and show that the FEC precipitate contains smaller relative quantities of species containing C and O than the VC precipitate. Results from previous XPS studies of the SEI,^{18,32,43–45} and potential products identified in theoretical studies of the reduction reactions,^{20,24–26} are used to help assign the XPS spectra. We note that the residual naphthalene and THF in the system may contribute to the overall signal seen in the C1s spectra (C=C, C–C, and C–O).

Table 1: Relative elemental concentrations from XPS analysis.

Element	FEC Precipitate	VC Precipitate
O1s	16%	35%
C1s	41%	52%
Li1s	27%	12%
F1s	16%	-

F1s Core Peaks: For the FEC precipitate, the dominant peak at 684.8 eV in the F1s spectrum is assigned to LiF. The asymmetry of the peak, extending to 689 eV suggests the possibility of a minor additional fluorine environment but a more distinct shoulder at approximately 688 eV would be expected if significant amounts of either residual FEC or a fluorinated organic species was present.^{29,46} This XPS assignment is further confirmed by ¹⁹F ssNMR (discussed later).

C1s Core Peaks: For both the FEC and VC precipitates, the deconvolutions of the spectra show peaks at approximately 291.0 eV, 290.0 eV, 288.5 eV, 286.8 eV, and 284.8 eV, the relative intensities of these peaks differing between the samples. Based on the binding energies, the 291.0 eV peak is assigned to ROCO₂R and the 290.0 eV peak to Li₂CO₃.^{21,44} The peak at 288.5 eV is assigned to CO₂ environments contained in HCO₂Li and/or Li₂C₂O₄, while the peaks at lower binding energies of 286.8 eV and 284.8 eV indicate C–O and C–C bonds, respectively. Li₂CO₃ has a larger contribution in the VC precipitate compared with the FEC precipitate,

also seen by ⁷Li and ¹³C ssNMR later. In addition, the relative signal intensity of the HCO₂Li/Li₂C₂O₄ peak is larger in the VC precipitate, these carboxylate environments being confirmed by ¹³C ssNMR in the VC sample, discussed further. The combination of the 291.0 eV (ROCO₂R) peak and larger contribution at 286.8 eV (C–O) indicate alkyl carbonate environments, these environment being previously assigned to poly(VC).^{21,45,47–49}

O1s Core Peaks: For the FEC precipitate, the dominant peak is centred at 532.8 eV, characteristic of a mixture of C=O and C–O environments. In contrast, the VC precipitate shows a central peak centred at 532 eV assigned to a carbonate contained in Li₂CO₃, alkyl carbonate and/or carboxylate contained in HCO₂Li or Li₂C₂O₄. The shift between the FEC and VC spectra indicates different relative quantities of local O environments contained in the samples, the shift towards lower binding energy in the VC precipitate consistent with the C1s spectrum indicating larger relative amounts of Li₂CO₃.

Solid State NMR.

Multinuclear ssNMR: Direct excitation ¹H, ⁷Li, and ¹⁹F multinuclear ssNMR measurements of the FEC and VC precipitates (Figure 2) were performed. The ¹H ssNMR spectra both show similar overlapping resonances with shifts of 1.5, 3.6, 4.6/4.8 ppm. These resonances are more easily assigned using the additional information and larger chemical shift dispersion provided by ¹³C ssNMR experiments (discussed further). The VC sample shows a minor resonance at 8.3 ppm. This distinctive shift is consistent with an assignment of HCO₂Li or similar environment based on previous work by Leskes et al.⁵⁰ We note that residual THF may contribute to the signals of 1.5 and 3.6 ppm. In the ⁷Li ssNMR spectra, each of the samples show a resonance near 0 ppm, the signal being consistent with the presence of Li₂CO₃, Li₂C₂O₄, and HCO₂Li. The assignment is based on both previous ⁷Li ssNMR measurements of

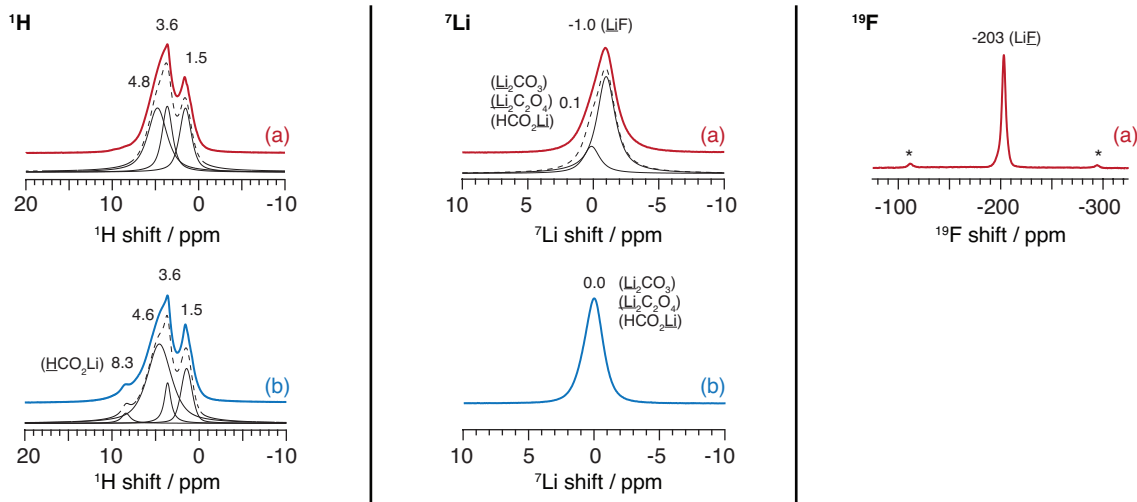


Figure 2: ssNMR spectra of the precipitates obtained through reduction of (a) FEC and (b) VC using deuterated naphthalene. ^1H Hahn echo, ^7Li single pulse, and ^{19}F Hahn echo ssNMR experiments were performed. The spectra were acquired with 60 kHz MAS and are scaled by maximum signal height. A simulated fit and deconvolution are presented under the experimentally obtained spectra. The asterisks in the ^{19}F spectrum indicate ssNMR spinning sidebands.

lithium salts^{50,51} and the ^{13}C ssNMR results of this study. In the FEC precipitate, ^{19}F (-203 ppm) and ^7Li (-1.0 ppm) resonances clearly indicate the presence of LiF. No additional resonances are seen in the ^{19}F spectrum. In contrast to the XPS spectrum, the larger chemical shift dispersion of the ^{19}F ssNMR spectrum allows for a definitive assignment of any ^{19}F environments; the ssNMR result here is consistent with the XPS assignment of LiF in the F1s spectrum.

^{13}C ssNMR of FEC precipitates: For the FEC precipitate, direct excitation ^{13}C ssNMR experiments (Figure 3a-i) show relative quantities of carbon environments, labelled C through F. The large chemical shift dispersion allows for definitive assignments based on chemical shifts, with the labelled ^{13}C spectral peaks summarized in Table 2. Resonance C (155 ppm) is characteristic of a ROCO_2R carbonate environment (also seen in the C1s XPS spectra). Resonance D (100 ppm) is assigned to a protonated C environment, adjacent to two OR groups. Resonance E (74 ppm) is assigned to a protonated C environment adjacent to a single O. Resonance F (40 ppm) is characteristic of an environment with C not adjacent to O and is assigned to $\text{RCH}_2\text{R}'$, its broad linewidth being characteristic of a distribution of similar environments. Resonances assigned to residual naphthalene and THF are labelled. Additional experiments (see Supporting Information) were performed at two different magic angle spinning frequencies (10 kHz, 12 kHz) and field strengths (500, 700 MHz) to confirm the spinning sideband peak positions. These peaks are indicated by asterisks and do not represent distinct resonances.

The ^{19}F - ^{13}C cross polarization experiment, Figure 3a-ii, is used to identify chemical environments where ^{19}F and ^{13}C are in close spatial proximity: the ssNMR experiment uses through-space magnetization transfer from the former to the latter. Interestingly, only a low intensity resonance (E) at approximately 74 ppm is seen in the ^{19}F - ^{13}C cross polarization experiment (Figure 3a-

ii): no peaks are observed in the region of 110 ppm where a C–F group may be expected to resonate. The ^{13}C results are consistent with the ^{19}F ssNMR and F1s XPS results showing a single resonance assigned to LiF. The signal detection of resonance E indicates LiF is in close proximity to this C environment. A ^7Li - ^{13}C experiment was also attempted but no signal was detected: the null result is in agreement with the ^7Li ssNMR assignment (Figure 2) showing that very little Li_2CO_3 (or similar environment resonating near 0 ppm in the ^7Li spectrum) is present in the FEC precipitate.

^1H - ^{13}C cross polarization experiments, Figures 3a-iii, were performed, further confirming the ^{13}C assignments. The signal intensity in these experiments depend on molecular dynamics, mobility, and spatial proximity of ^1H and ^{13}C nuclei. Following a similar strategy used in our previous paper to assign different carbon local environments,⁵² a delay time is introduced following the cross polarization step in the experiment to perform a dipolar dephasing (interrupted decoupling) experiment, the experimental details being described in the Supporting Information. When the delay times are varied in the experiment, different C functional groups can be identified based on their attenuation rates. Protonated C are attenuated more rapidly than non-protonated C. Also, the signal intensities for rigid CH/CH₂ environments attenuate more rapidly than signal from mobile species such as rotating CH₃ methyl groups (due to a reduced dipolar coupling). The results of the experiments here confirm the assignment of resonance C to ROCO_2R , a species that does not have directly bonded protons, and is not attenuated in the relatively short delays used in the experiment. In contrast, each of the resonances D, E, and F show pronounced attenuation, these resonances decaying at similar rates (with increased dephasing delay times) confirming that they correspond to CH and CH_2 groups.

^{13}C ssNMR of VC precipitates: For the VC precipitate, direct excitation ^{13}C ssNMR experiments (Figure

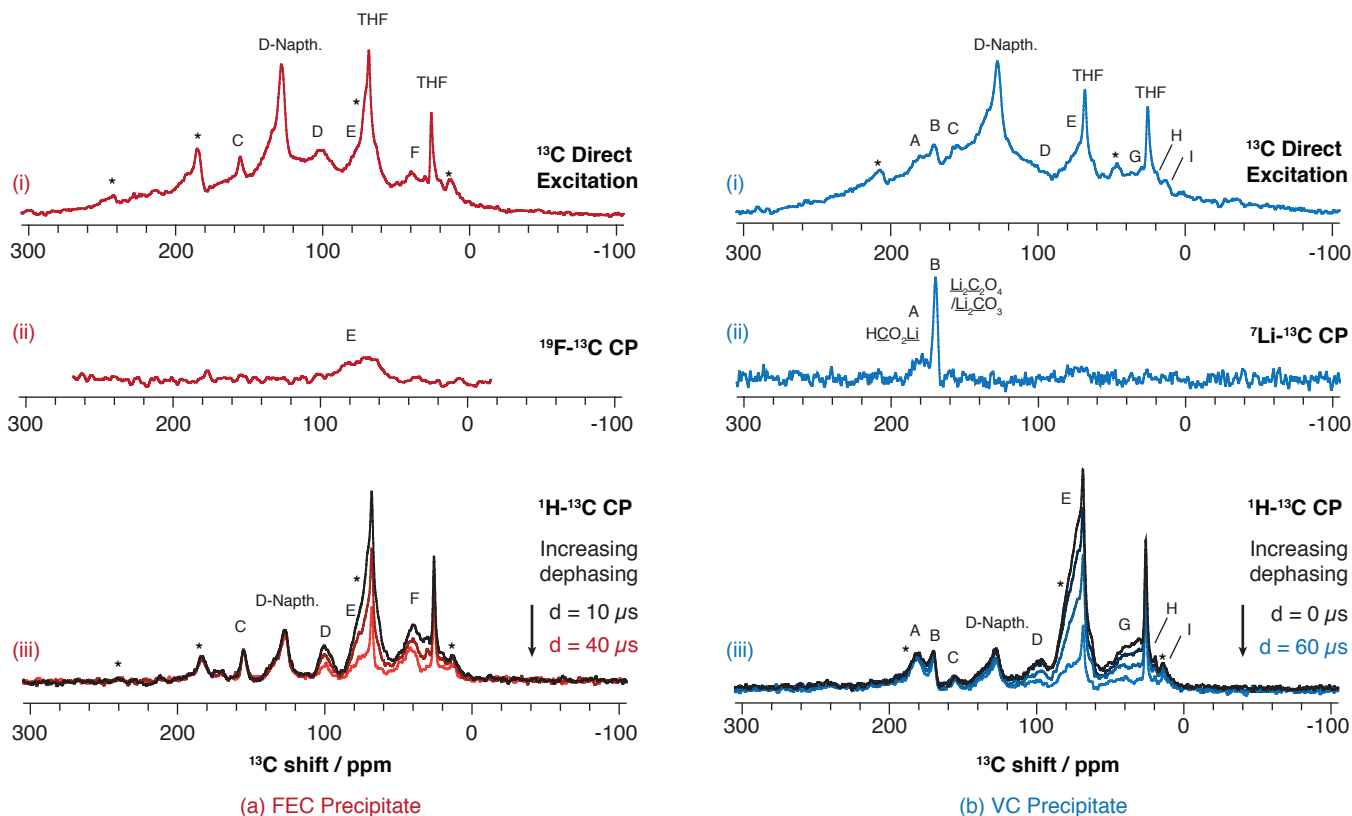


Figure 3: ^{13}C ssNMR experiments performed on (a) FEC and (b) VC precipitates. (a-i) ^{13}C single pulse, (a-ii) ^{19}F - ^{13}C cross polarization, CP, with contact time of $1000\ \mu\text{s}$ (a-iii) dipolar dephasing (interrupted decoupling) contact time of $1000\ \mu\text{s}$ and interrupted delay times, $d=40$, 20 , and $10\ \mu\text{s}$. (b-i) ^{13}C single pulse, (b-ii) ^7Li - ^{13}C CP with contact time of $2000\ \mu\text{s}$, (b-iii) dipolar dephasing with contact time of $1000\ \mu\text{s}$ and delay times, $d=60$, 20 , 10 , $0\ \mu\text{s}$. When delay times are varied in the dipolar dephasing experiment, different C functional groups can be identified based on their attenuation rates. See Supporting Information for ssNMR pulse sequence details. Spectra were acquired with $10\ \text{kHz}$ MAS at $500\ \text{MHz}$ (b-i, b-ii) and $700\ \text{MHz}$ (a-i, a-ii, a,b-iii) and are scaled by maximum intensity. All of the experiments were measured on samples prepared with deuterated naphthalene with the exception of (a-ii). Additional experiments confirm the residual naphthalene assignment and are available in the Supporting Information.

3b-i) show a similar spectral signature to the FEC precipitate, but with additional resonances A, B, G, H, and I detected. Note that the ssNMR spinning sideband (from the deuterated naphthalene, labelled D-Naphth.) shifts in the spectrum, compared to the FEC precipitate, as it was acquired at a different field strength. Resonance A ($179\ \text{ppm}$) is characteristic of a carboxyl $\text{R}\text{C}\text{O}_2\text{Li}$ environment. Given that the distinctive ^1H shift of $\text{H}\text{C}\text{O}_2\text{Li}$ was detected in the ^1H ssNMR spectrum of the VC precipitate, the signal is assigned to $\text{H}\text{C}\text{O}_2\text{Li}$. $\text{CH}_3\text{CH}_2\text{C}\text{O}_2\text{Li}$, if present, would also contribute to the signal. The overlapping carbonate resonances B ($172 / 170\ \text{ppm}$) are assigned to $\text{Li}_2\text{C}_2\text{O}_4$ and Li_2CO_3 , respectively. The resonance G ($36\ \text{ppm}$) is assigned to a distribution of $\text{R}\text{C}\text{H}_2\text{R}'$ environments. The minor peak H ($20\ \text{ppm}$) is characteristic of $\text{CH}_3\text{C}\text{H}_2\text{R}$, or alternatively a $\text{C}\text{H}_3\text{CH}-$ group adjacent to an O as indicated in Table 2. The minor peak I ($13\ \text{ppm}$) is characteristic of $\text{C}\text{H}_3\text{R}$ environments; the resonance likely has some contribution from residual diethyl ether ($\text{CH}_3\text{CH}_2-\text{O}-\text{CH}_2\text{CH}_3$) used to rinse the precipitates during synthesis. However, reactions forming these environments in minor quantities may also contribute to the signal.

The ^7Li - ^{13}C cross polarization experiment (Figure 3b-ii) indicates the Li^+ coordination environments by the

carboxyl and carbonate groups. The broad resonance of A is consistent with the $\text{H}\text{C}\text{O}_2\text{Li}$ assignment. The majority of the signal contributing to the asymmetric peak at B is assigned to Li_2CO_3 , the small shoulder being assigned to $\text{Li}_2\text{C}_2\text{O}_4$. The ^7Li ssNMR spectra are consistent with these assignments (Figure 2).

Table 2: ^{13}C ssNMR assignment for peaks A-I labelled in Figure 3.

Resonance	Shift/ppm	Fragment
A: VC	179	$\text{H}\text{C}\text{O}_2\text{Li}$
B: VC	170/172	$\text{Li}_2\text{C}\text{O}_3/\text{Li}_2\text{C}_2\text{O}_4$
C: VC/FEC	155	$\text{R}\text{O}\text{C}\text{O}_2\text{R}$
D: VC/FEC	100	$-\text{C}\text{H}-\text{O}-\text{R}$
E: VC/FEC	74	$\text{C}\text{H}-\text{O}-\text{R}$
F: FEC	40	$\text{R}\text{C}\text{H}_2\text{R}'$
G: VC	36	$\text{R}\text{C}\text{H}_2\text{R}'$
H: VC	20	$\text{CH}_3\text{C}\text{H}_2\text{R}$ or $\text{C}\text{H}_3\text{CH}-\text{O}^-$
I: VC	13	$\text{C}\text{H}_3\text{C}\text{H}-\text{C}\text{H}_3\text{R}$

In the dipolar dephasing experiment (Figure 3b-iii), the carbonate resonances B (assigned to Li_2CO_3 and $\text{Li}_2\text{C}_2\text{O}_4$), which do not have directly bonded protons, are not attenuated in the experiment. In contrast resonances D, E, and G show pronounced attenuation, at similar rates of decay (with increased dephasing times),

indicating CH and CH₂ groups, confirming the protonated C assignments (Table 2). The two sharp resonances H (at the same position as a naphthalene spinning sideband, as indicated by an asterisk), and I show signal attenuation consistent with their assignments in Table 2, the $\underline{C}H_3R$ environment being expected to attenuate more slowly. The Supporting Information contains a ¹H-¹³C CP spectrum, performed at lower field, which helped separate the isotropic resonances and sidebands and confirmed the presence of peaks H and I. No significant attenuation of resonance A is seen in the dipolar dephasing experiment (Figure 3b-iii), which is not consistent with its assignment solely to HCO₂Li. This spectrum was collected at a higher magnetic field strength than the spectra shown in Figure 3b (i) and (ii) and there is now a severe overlap with the now much more intense D-Naphth. spinning sideband, (labelled with an asterisk), this signal not being attenuated in the dephasing experiment. Similarly no attenuation is expected for an acetate resonance.

FTIR. FTIR spectra of the precipitates obtained on reduction of FEC and VC are displayed in Figure 4, confirming chemically bonded groups assigned in our XPS and ssNMR spectra. Our assignment here is based on comparison of the spectra to related studies.^{18,32,44,47} The FEC and VC reduction products have similar FTIR signatures, with some relative intensity differences at approximately 1300, 1400-1500, and 1750 cm⁻¹. In addition to the VC/FEC reduction products, some residual naphthalene is seen (788, 3064 cm⁻¹). In each of the samples, the previously assigned Li₂CO₃ is again observed (878 cm⁻¹, 1449 cm⁻¹ and 1488 cm⁻¹). As also seen by ¹³C ssNMR (Figure 3b-ii) and the C1s XPS spectra (Figure 1), the Li₂CO₃ is more prevalent in the VC sample.

In the FEC reduction product, peaks for carbonate C=O (1795 cm⁻¹) and C-O (1080, 1171 cm⁻¹) bonds are seen. These peaks are assigned to bonds contained in ROCO₂R environments, resembling those assigned to a poly(VC) product in our previous study.¹⁸ Peaks for carboxylate C=O (1598 cm⁻¹) and C-O (1402 cm⁻¹) bonds are also seen, these absorptions being consistent with a mixture of HCO₂Li and/or Li₂C₂O₄.⁴⁴ In the VC reduction product, similar peaks for carbonate C=O (1793 cm⁻¹) and C-O (1077, 1172 cm⁻¹) bonds and carboxylate C=O (1619 cm⁻¹) and C-O (1428 cm⁻¹) bonds are assigned to poly(VC) and HCO₂Li/Li₂C₂O₄, respectively. Recall that the signature for HCO₂Li was also seen in the ¹H and ¹³C ssNMR (Figures 2 and 3) and XPS C1s (Figure 1) spectra. With HCO₂Li only being detected in the VC sample by ssNMR, and the stronger peak intensity at 1660 cm⁻¹ in the VC precipitate, the HCO₂Li likely resonates at the higher frequency of 1660 cm⁻¹ and Li₂C₂O₄ at a lower frequency of 1600 cm⁻¹.

To gain further insight into the decomposition mechanisms, an additional experiment was performed with a half molar equivalent of Li-Nap, providing FTIR spectra comparable to that of Figure 4 (see Supporting Infor-

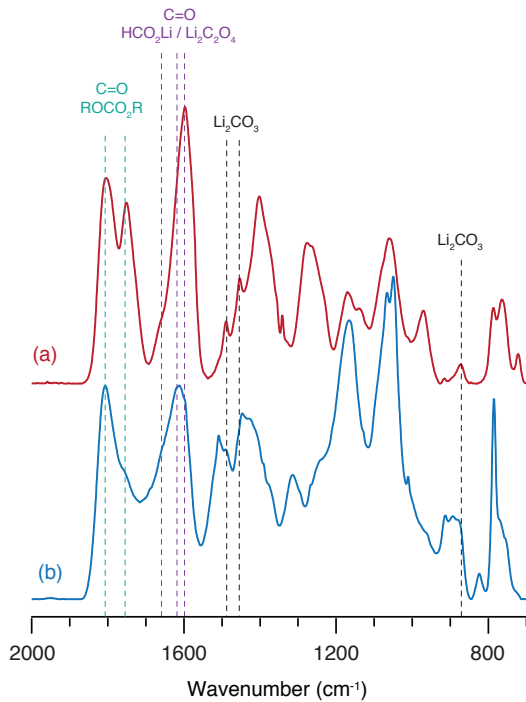


Figure 4: FTIR spectra of the precipitates obtained through reduction of (a) FEC and (b) VC using non-deuterated naphthalene.

mation). The spectra show much weaker intensities for the peaks assigned to Li₂CO₃, Li₂C₂O₄, and HCO₂Li, relative to the peaks assigned to ROCO₂R environments assigned to poly(VC), revealing a Li concentration dependence in the formation of these inorganics.

GC-MS analysis of gases. GC-MS analysis was performed, providing more insight for the reduction mechanisms of FEC and VC, resulting in the solid precipitates. For FEC, the reduction with Li-Nap yields a mixture of CO and CO₂. The ratio of CO to CO₂ peak areas is 1:4.4. For VC, the reduction with Li-Nap yielded carbon monoxide as the only gaseous product (i.e. no CO₂ was detected), CO₂ having been detected previously.^{45,47} The absence of CO₂ detection was attributed to its consumption in further reactions, the experiment being performed in a closed system, with an abundance of Li.

Proposed Reduction Products. Based on the above analysis, we propose that the reduction product poly(VC) is present in the precipitates of both FEC and VC, as well as Li₂C₂O₄, Li₂CO₃, and HCO₂Li, Figure 5. The relative ratio of these products differs for VC and FEC.

The ROCO₂R environment assigned in each of the XPS, ssNMR (Table 2, fragment C), and FTIR spectra is assigned to the repeating EC units of the poly(VC). The C-O environments seen by XPS and corresponding protonated C environments adjacent to one O seen by ¹³C ssNMR (Table 2, fragment E) are also assigned to the repeating EC units of poly(VC). The repeating EC units of the poly(VC) may terminate with a CH₃ group and contribute to the ¹³C ssNMR signal of resonance H (Table 2). ¹³C ssNMR resonance D, as-

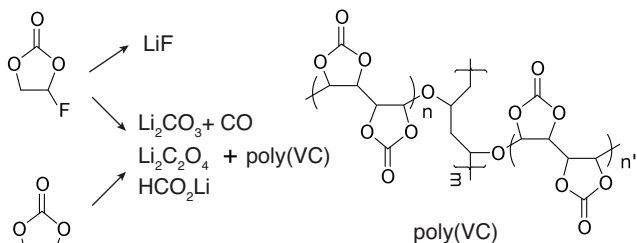


Figure 5: Proposed FEC/VC reduction products. A possible structure for a crosslinking site of poly(VC) is indicated.

signed to protonated C environments adjacent to two OR groups, indicates the possibility of a crosslinking site for poly(VC) (seen in Figure 5). The crosslinking site may also contain C environments adjacent to one O, contributing to resonance E. The signals from the distribution of carbons not adjacent to O (Table 2, fragments F–I) are assigned to the crosslinking site; the assignment for these peaks would vary according to the crosslinking terminations. Note that the broad peaks of the ^{13}C ssNMR spectra (Figure 3) indicate a distribution of local environments. A labelled structure and calculated ^{13}C and ^1H NMR chemical shifts of the proposed poly(VC) structure that support the assignment are included in the Supporting Information (Figures S4–S6). Additional structures with similar functional groups, that are consistent with the NMR chemical signatures and assigned fragments (Table 2) cannot be ruled out completely. Note that while the direct excitation ^{13}C ssNMR spectra is a quantitative result (Figure 3-i), an accurate deconvolution was not attainable due to combined factors of weak resonances, strong background signal, and the presence of residual solvents.

Discussion

Overall, our ssNMR, XPS, and FTIR experiments show complementary evidence for the presence of poly(VC) in the reduction products of both FEC and VC (possible reactions in Scheme 1-i, ii). While similar species were seen in each of the precipitates, a clear difference was seen with respect to the relative quantities of inorganic Li environments. In particular, we detected HCO_2Li , $\text{Li}_2\text{C}_2\text{O}_4$ and Li_2CO_3 in higher concentrations in the VC precipitate than in the FEC precipitate. For the FEC precipitate, the majority of Li was contained in LiF, with the relative quantities of the Li environments being confirmed by the quantitative ^7Li ssNMR spectrum (Figure 2). Definitive assignments for C-groups and fluorinated-species contained in the reduction products were aided by the large chemical shift dispersion of the ^{13}C and ^{19}F ssNMR spectra. The large chemical shift dispersion in the ssNMR spectra was complementary to the XPS analysis, which had higher sensitivity but contained overlapping peaks in the spectra. By ssNMR, the detection of the carboxylate environments were only observed in the VC precipitate (not the FEC precipitate), this result attributed to the small concentrations of the carboxylate environments in the

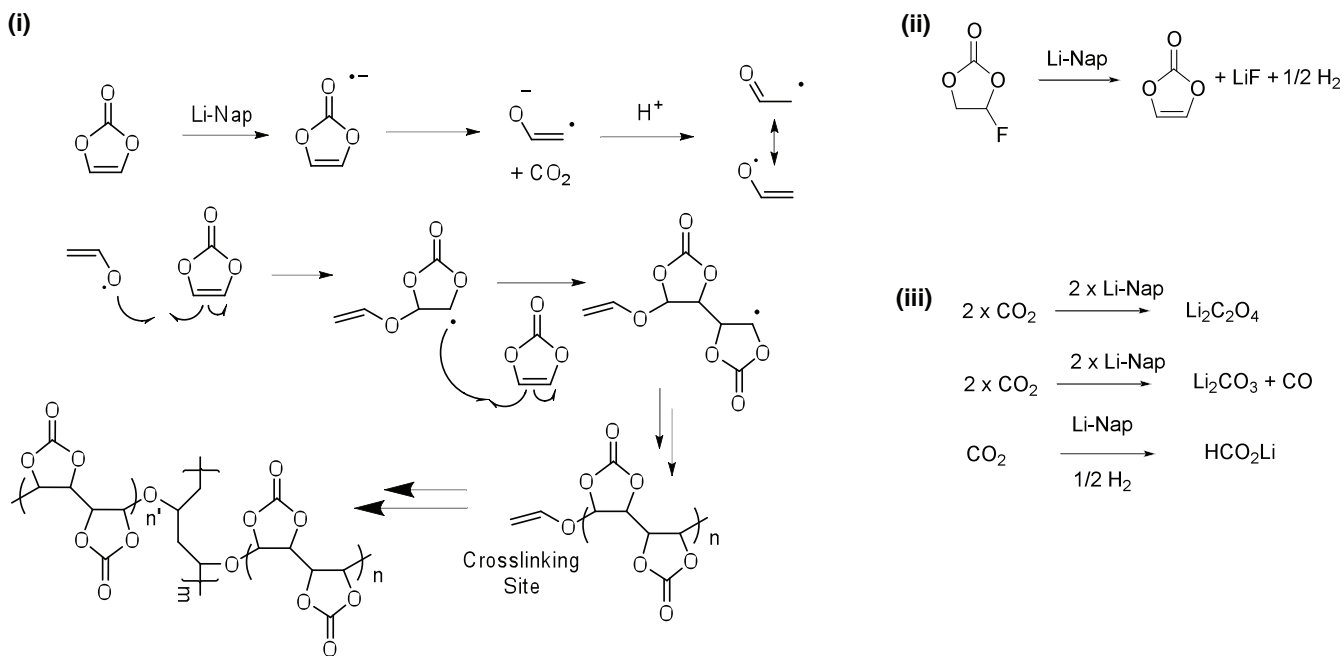
FEC precipitate. A difference in sensitivity between the samples was supported by a relative elemental analysis provided by XPS (see Table 1), showing smaller relative quantities of species containing C and O in the FEC precipitate than the VC precipitate. In contrast, carbonate resonances were seen in both the VC and FEC precipitate by ssNMR, supporting the presence of poly(VC) in each of the samples (the proposed poly(VC) structure containing repeating EC units and a cross linking site, Figure 5). The carboxylate and carbonate assignments in the ^{13}C ssNMR and C1s/O1s XPS spectra were further supported by the detection of these chemical bonds in the FTIR spectra.

We note that the results in this study only show the presence of an LiF fluorine environment, contradicting the results in previous XPS studies where additional organo-fluoride environments were seen and attributed to the reduction of FEC; for example, Etacheri et al. observed a central F1s peak assigned to LiF at approximately 685 eV and organic fluorides at approximately 688 eV.²⁹ Our XPS result shows a single resonance assigned to LiF, with no clear shoulder in the spectra. Our ^{19}F ssNMR results, which have the advantage of a larger chemical shift dispersion, are in agreement with our XPS results. Moreover, we have performed ^{19}F - ^{13}C ssNMR cross polarization experiments and have not detected any signal in the region where C–F bonds would be expected in the ssNMR spectrum (Figure 3a-ii). In addition, we have also not seen any evidence for volatile fluorine-containing hydrocarbons by GC-MS.

Proposed Reduction Mechanisms. Possible reaction schemes to form the products proposed on the basis of the experimental data are outlined in Scheme 1-i, ii, and iii. We stress that there are likely multiple competing pathways and viable reactions also leading to reduction products with similar chemical signatures.

For the reduction of VC, Scheme 1-i, a possible first step of the reaction is the reduction of VC to generate a radical anion followed by loss of CO_2 and generation of the vinyloxy radical anion. The vinyloxy radical anion could initiate the polymerization of VC but more likely scavenges H^+ to generate the vinyloxy radical which has been reported as the intermediate species in the FEC reduction by Shkrob et al.⁵³ The reactive vinyloxy radical can initiate the polymerization of VC to generate poly(VC) via a radical polymerization reaction. The presence of the residual vinyl group from the vinyloxy radical can then polymerize via a radical polymerization mechanism to generate the crosslinked polymer.

With the reduction products detected being nearly identical to FEC, the difference being the LiF product, similar reduction mechanisms are expected. One possible mechanism for the reaction of FEC is nearly identical to the reaction of VC, except that the first step of the reaction involves the reduction of FEC to generate VC, LiF, and $1/2 \text{H}_2$, Scheme 1-ii. We note that LiF was generated nearly quantitatively via the Li-Nap reduction of FEC in our experiments. While we were unable to observe H_2 generation, as the mass of H_2 is



Scheme 1: Possible reaction schemes consistent with the chemical signatures detected by XPS, ssNMR, FTIR, and GC-MS.

below the detection limit of our GC-MS, the detection of H_2 during the reduction of FEC was previously reported as part of the 4 electron reduction mechanism of FEC by Jung et al.⁵⁴ The rapid polymerization of the VC generated from FEC can be explained by VC being more reactive under the reductive conditions than FEC. Additional experiments to confirm the FEC reduction mechanism were performed; when the Li-Nap reduction of FEC was conducted under very dilute conditions, with a large excess of FEC, trace quantities of VC (in addition to the previously reported products) were observed, supporting the reductive conversion of FEC to VC. The reaction mixtures obtained from reduction of dilute FEC with lithium naphthalenide contain a new peak in the GC trace at 3.10 min. The MS of the new peak matches the MS in the NIST library for VC (see Supporting Information). The intensity of the VC peak increased with decreasing FEC concentration: when the FEC concentration was 0.134 M, the intensity of the VC peak was 1.0×10^4 (total ion current); after the concentration of FEC decreased to 0.055 M, the intensity of the VC peak increased to 1.1×10^5 (total ion current). The systematic increase in the VC concentration, with a decrease in the FEC concentration, is consistent with the trapping of a reactive intermediate. Interestingly, when 0.5 equivalents of Li-Nap were reacted with FEC, only 0.5 equivalents of FEC were reduced; in contrast, addition of 0.5 equivalents of Li-Nap to VC resulted in the reduction of all of the VC. These observations are consistent with a stoichiometric reduction of FEC and a catalytic reduction of VC. We also note that the approximate 2:1 ratio of CO_2 to H_2 previously observed by Jung et al.,⁵⁴ correlates well with our proposed mechanisms in (i) and (ii). Further work is ongoing to explore

the reduction mechanisms in greater detail.

We note that Shkrob et al.,⁵³ have detected the vinyloxy radical in our proposed reaction Scheme 1-i in their radiolysis experiments and have concluded that the single-electron reaction of $\text{FEC} + \text{Li} + \text{e}^- \rightarrow \text{LiF} + \text{CO}_2 + \cdot\text{CH}_2\text{CHO}$ is viable. However, the reaction is inconsistent with our observation of a VC intermediate and the observation of H_2 evolution by Jung et al.⁵⁴ In addition, the absence of C–F environments detected in our study (albeit on chemically reduced FEC) contradicts subsequent reactions they have proposed. We note however that the conditions by which reduction occurs - radiolysis vs chemical reduction may result in different reaction products.

Comparison with SEI studies. Our results show strong similarities to previous SEI studies where these additives have been used in the electrolyte of cycled cells, the similarities validating the technique of using the naphthalene reduced products as a model to study the SEI formed in Li-ion cells. For example, in a study by Ouatani et al.,²¹ the degradation of VC was analyzed by using XPS analysis of LiCoO_2 /graphite electrodes prepared in a Li-ion cell with LiPF_6 in 1 mol L^{-1} pure VC electrolyte. Their C1s XPS spectra showed degradation products at 291.3 eV (CO_3), 287.8 eV (CO_2), and ~ 286.6 eV (CO), the peak positions agreeing with those observed in this study. Here, we have assigned the VC degradation products to poly(VC) (291.0 eV and 286.8 eV) and $\text{HCO}_2\text{Li}/\text{Li}_2\text{C}_2\text{O}_4$ (288.5 eV), the latter assignment being supported by our ^{13}C ssNMR results. We note that the differences in intensity for the peaks at 290 and 287.8 eV for our data compared with that of Ouatani et al., are likely due to differences in the concentration of the CO_2 reduction products (Li_2CO_3 ,

HCO₂Li and Li₂C₂O₄) under the conditions of their experiments compared to the conditions of our experiments (reactions in a Li-ion cell versus a closed system with an abundance of Li). In another example, Ota et al. have used FTIR to analyze VC-derived SEI layers formed on graphite in Li half-cells,⁴⁷ including cells prepared with 1 mol dm⁻³ LiPF₆ / pure VC electrolyte. Their spectrum showed absorption peaks assigned to poly(VC) (1817, 1147, 1080, 758 cm⁻¹), carboxylates (1580, 1413 cm⁻¹), and carbon double bonds (1620, 972 cm⁻¹). The absorption peaks strongly resemble those seen in the VC reduction product in this study. However, carbon double bonds were not detected in large quantities in our VC reduction products by any of our spectroscopy analysis, ruling out the presence of unsaturated lithium alkyl dicarbonate salts such as lithium vinylene dicarbonate (LVD), and lithium divinylene dicarbonate (LDVD), these SEI decomposition products being suggested by prior theoretical investigations (see Supporting Information for our estimated NMR shifts of these predicted products).²⁰ They observed similar ¹³C NMR peaks at ~154, and ~70-80 ppm in ¹³C liquid NMR spectra of the SEI formed on the graphite electrode, dissolved in DMSO-d₆, which they assigned to an oligomer of VC and/or poly(VC), the poly(VC) assignment in agreement with the ssNMR results here (see Table 2, peaks C, E); they also observed the distinctive ¹³C ssNMR resonance at ~100 ppm, seen in this study (see Table 2, peak D) which they assigned to an oligomer of VC. Here, we have assigned the 100 ppm resonance to a crosslinking site of poly(VC) (see Scheme 1-i, Figure 5). We have also observed broad peaks at 36 and 40 ppm, indicating a distribution of RCH₂R' environments (see Table 2, peaks F, G), assigned to the crosslinking site. Finally, in our previous study of the SEI composition on Si anodes formed in the presence of FEC and VC additives,¹⁸ we have observed an FTIR adsorption peak at ~1800 cm⁻¹ increasing with additive concentration, the adsorption peak being assigned to poly(VC), as in this study.

The absence of the production of CO₂ during the reduction of VC, seen by GC-MS, is in contrast to the literature. For example, the study by Ota et al.,⁴⁷ which used pure VC as an electrolyte solvent, observed CO₂ as the major gaseous product and a small amount of CO. Similarly, CO₂ has been reported as the major gaseous product, when VC is used as an electrolyte additive.^{45,49} The discrepancy is likely due to the reduction of CO₂ by excess Li naphthalenide to generate CO, Li₂CO₃, and Li₂C₂O₄ (see Scheme 1-iii).⁵⁵ In the reduction of FEC, most of the Li-Nap is consumed to convert FEC to VC and LiF (see Scheme 1-ii). Thus there is less residual Li-Nap present to reduce the CO₂ (Scheme 1-iii), resulting in the mixture of CO and CO₂ measured by GC-MS in a ratio of 1:4.4, respectively. In contrast, VC is directly reduced by Li-Nap and thus there is excess Li-Nap present to reduce all of the CO₂ to CO (Scheme 1-iii), resulting in more Li₂CO₃ in the VC precipitate compared with the FEC precipitate. The in-

creased concentration of Li₂CO₃ in the VC precipitate was observed by XPS, ssNMR, and FTIR (Figures 1, 3, and 4). Furthermore, additional experiments (see Supporting Information) showed that decreasing to a half molar Li-Nap concentration decreased the FTIR peak intensities of Li₂CO₃, Li₂C₂O₄, and HCO₂Li, relative to the peaks assigned to poly(VC), indicating decreased reduction of CO₂ (by the reactions of Scheme 1-iii).

While this study does not show the reduction reactions on an anode in a Li-ion cell, the chemical signatures of the reduction products seen here may serve as a useful reference for future studies where an SEI has been formed in a Li-ion cell in the presence of FEC and VC. We acknowledge that reactions in the cell may differ due to many factors such as the presence of additional co-solvents and the reactivity at the surface of the lithiated anode; under these considerations, it is interesting to reflect on the practical use of these additives in the context of the results here. FEC and VC have been shown to improve Si electrode capacity retention,^{5,12,13,16-18,29} Si systems suffering from uncontrolled SEI growth due to the large volume expansion of the Si particles during lithiation, thought to result in cracking in the SEI.⁵² The poly(VC) formed by each of these additives would likely aid SEI elasticity helping to solve the problem. However, elasticity is not the only design requirement; Li⁺ transport across the SEI to access the Si particles during electrochemical cycling is also critical. Therefore, increasing the polymer content may not be an adequate solution if the resulting SEI cannot facilitate transport. Grain boundaries and the mixture of polymerized chains with inorganic products may for example play a role in Li⁺ transport across the SEI. With improved capacity retention being achieved by using FEC in higher concentrations vs VC (10-25 wt% FEC and 3-6 wt % VC in our previous study¹⁸) the relative mix of inorganics and organics may be an important SEI design parameter to consider. These results suggest that more FEC is required to form the same amount of poly(VC); further work is ongoing to explore these ideas.

Conclusions

We have prepared reduction products of FEC and VC, capturing their spectral signatures by ssNMR, XPS, and FTIR. Our results indicate similar reduction products for FEC and VC, but in differing relative quantities, of Li₂CO₃, Li₂C₂O₄, HCO₂Li, and poly(VC). We have proposed a reaction scheme for the formation of poly(VC), the poly(VC) containing a crosslinking site. While the reaction scheme is a reasonable proposal it is not definitive. Additional species may also be formed and lead to similar chemical signatures.

For the case of FEC reduction, the results suggest a mechanism where FEC reduces to form LiF and VC, followed by subsequent VC reduction; when monitoring the reaction under dilute conditions by GC-MS, we observed the formation of VC in trace quantities. Interestingly, we did not detect any fluorinated organic

species in large enough quantities for an assignment in either of the ^{19}F ssNMR or F1s XPS spectra. With the majority of Li being consumed in the formation of LiF, only small quantities of Li_2CO_3 , $\text{Li}_2\text{C}_2\text{O}_4$, and HCO_2Li were subsequently formed.

For the case of VC reduction, greater quantities of Li_2CO_3 , $\text{Li}_2\text{C}_2\text{O}_4$, HCO_2Li were seen. The different relative quantities of inorganic Li environments in the reduction products of VC and FEC may relate to their practical use in lower and higher concentrations as electrolyte additives, the relative quantities of inorganic and organic environments of the SEI formed in the presence of these additives likely having an impact on Li^+ transport.

Acknowledgement This work was partially supported by the Assistant Secretary for Energy Efficiency and Renewable Energy, Office of Vehicle Technologies of the U.S. Department of Energy under Contract No. DE-AC02-05CH11231, under the Batteries for Advanced Transportation Technologies (BATT) Program subcontract #7057154. This work was partially supported by the U.S. Department of Energy EPSCoR Implementation Award Grant DE-SC0007074 for BLL, BSP, and TY. A.L.M. is an awardee of a Schiff Foundation Studentship and a nanoDTC Associate. M.L. is an awardee of the Weizmann Institute of Science - National Postdoctoral Award for Advancing Women in Science and thanks the EU Marie Curie intra-European fellowship for funding.

Supporting Information Available: Further ssNMR experimental details and spectra, FTIR spectra, and NMR chemical shift DFT calculations. This material is available free of charge via the Internet at <http://pubs.acs.org/>.

References

- Xu, K. Nonaqueous liquid electrolytes for lithium-based rechargeable batteries. *Chem. Rev.* **2004**, *104*, 4303–4418.
- Abe, K.; Yoshitake, H.; Kitakura, T.; Hattori, T.; Wang, H.; Yoshio, M. Additives-containing functional electrolytes for suppressing electrolyte decomposition in lithium-ion batteries. *Electrochim. Acta* **2004**, *49*, 4613–4622.
- Tasaki, K.; Kanda, K.; Kobayashi, T.; Nakamura, S.; Ue, M. Theoretical studies on the reductive decompositions of solvents and additives for lithium-ion batteries near lithium anodes. *J. Electrochem. Soc.* **2006**, *153*, A2192–A2197.
- Zhang, S. S. A review on electrolyte additives for lithium-ion batteries. *J. Power Sources* **2006**, *162*, 1379–1394.
- Xu, K. Electrolytes and interphases in Li-Ion batteries and beyond. *Chem. Rev.* **2014**, *114*, 11503–11618.
- Peled, E. The electrochemical behavior of alkali and alkaline earth metals in nonaqueous battery systems—the solid electrolyte interphase model. *J. Electrochem. Soc.* **1979**, *126*, 2047–2051.
- Peled, E.; Golodnitsky, D.; Ardel, G. Advanced model for solid electrolyte interphase electrodes in liquid and polymer electrolytes. *J. Electrochem. Soc.* **1997**, *144*, L208–L210.
- Fong, R.; Von Sacken, U.; Dahn, J. R. Studies of lithium intercalation into carbons using nonaqueous electrochemical cells. *J. Electrochem. Soc.* **1990**, *137*, 2009–2013.
- Winter, M. The solid electrolyte interphase—the most important and the least understood solid electrolyte in rechargeable Li batteries. *Z. Phys. Chem.* **2009**, *223*, 1395–1406.
- Xu, K.; von Cresce, A. Interfacing electrolytes with electrodes in Li-ion batteries. *J. Mater. Chem.* **2011**, *21*, 9849–9864.
- Oesten, R.; Heider, U.; Schmidt, M. Advanced electrolytes. *Solid State Ionics* **2002**, *148*, 391–397.
- Choi, N.-S.; Yew, K. H.; Lee, K. Y.; Sung, M.; Kim, H.; Kim, S.-S. Effect of fluoroethylene carbonate additive on interfacial properties of silicon thin-film electrode. *J. Power Sources* **2006**, *161*, 1254–1259.
- Chen, L.; Wang, K.; Xie, X.; Xie, J. Effect of vinylene carbonate (VC) as electrolyte additive on electrochemical performance of Si film anode for lithium ion batteries. *J. Power Sources* **2007**, *174*, 538–543.
- Xiong, D.; Burns, J. C.; Smith, A. J.; Sinha, N.; Dahn, J. R. A high precision study of the effect of vinylene carbonate (VC) additive in Lignaphite cells. *J. Electrochem. Soc.* **2011**, *158*, A1431–A1435.
- Chockla, A. M.; Klavetter, K. C.; Mullins, C. B.; Korgel, B. A. Solution-grown germanium nanowire anodes for lithium-ion batteries. *ACS Appl. Mater. Interfaces* **2012**, *4*, 4658–4664.
- Lin, Y.-M.; Klavetter, K. C.; Abel, P. R.; Davy, N. C.; Snider, J. L.; Heller, A.; Mullins, C. B. High performance silicon nanoparticle anode in fluoroethylene carbonate-based electrolyte for Li-ion batteries. *Chem. Mater.* **2012**, *48*, 7268–7270.
- Ulldemolins, M.; Le Cras, F.; Pecquenard, B.; Phan, V. P.; Martin, L.; Martinez, H. Investigation on the part played by the solid electrolyte Interphase on the electrochemical performances of the silicon electrode for lithium-ion batteries. *J. Power Sources* **2012**, *206*, 245–252.
- Nguyen, C. C.; Lucht, B. L. Comparative study of fluoroethylene carbonate and vinylene carbonate for silicon anodes in lithium ion batteries. *J. Electrochem. Soc.* **2014**, *161*, A1933–A1938.
- Aurbach, D.; Gamolsky, K.; Markovsky, B.; Gofer, Y.; Schmidt, M.; Heider, U. On the use of vinylene carbonate (VC) as an additive to electrolyte solutions for Li-ion batteries. *Electrochim. Acta* **2002**, *47*, 1423–1439.
- Wang, Y.; Nakamura, S.; Tasaki, K.; Balbuena, P. B. Theoretical studies to understand surface chemistry on carbon anodes for lithium-ion batteries: how does vinylene carbonate play its role as an electrolyte additive? *J. Am. Chem. Soc.* **2002**, *124*, 4408–4421.
- El Ouatani, L.; Dedryvere, R.; Siret, C.; Biensan, P.; Reynaud, S.; Iratçabal, P.; Gonbeau, D. The effect of vinylene carbonate additive on surface film formation on both electrodes in Li-ion batteries. *J. Electrochem. Soc.* **2009**, *156*, A103–A113.
- Park, S.; Heon Ryu, J.; Oh, S. M. Passivating ability of surface film derived from vinylene carbonate on tin negative electrode. *J. Electrochem. Soc.* **2011**, *158*, A498–A503.
- Profatilova, I. A.; Stock, C.; Schmitz, A.; Passerini, S.; Winter, M. Enhanced thermal stability of a lithiated nanosilicon electrode by fluoroethylene carbonate and vinylene carbonate. *J. Power Sources* **2012**, *222*, 140–149.
- Leung, K.; Rempe, S. B.; Foster, M. E.; Ma, Y.; Martinez del la Hoz, J. M.; Sai, N.; Balbuena, P. B. Modeling electrochemical decomposition of fluoroethylene carbonate on silicon anode surfaces in lithium ion batteries. *J. Electrochem. Soc.* **2013**, *161*, A213–A221.

- (25) Martínez de la Hoz, J. M.; Balbuena, P. B. Reduction mechanisms of additives on Si anodes of Li-ion batteries. *Phys Chem Chem Phys* **2014**, *16*, 17091–17098.
- (26) Soto, F. A.; Ma, Y.; Martínez de la Hoz, J. M.; Seminario, J. M.; Balbuena, P. B. Formation and growth mechanisms of solid-electrolyte interphase layers in rechargeable batteries. *Chem. Mater.* **2015**, *27*, 7990–8000.
- (27) Profatilova, I. A.; Kim, S.-S.; Choi, N.-S. Enhanced thermal properties of the solid electrolyte interphase formed on graphite in an electrolyte with fluoroethylene carbonate. *Electrochim. Acta* **2009**, *54*, 4445–4450.
- (28) Schroder, K.; Alvarado, J.; Yersak, T. A.; Li, J.; Dudney, N.; Webb, L. J.; Meng, Y. S.; Stevenson, K. J. The effect of fluoroethylene carbonate as an additive on the solid electrolyte interphase on silicon lithium-ion electrodes. *Chem. Mater.* **2015**, *27*, 5531–5542.
- (29) Etacheri, V.; Haik, O.; Goffer, Y.; Roberts, G. A.; Stefan, I. C.; Fasching, R.; Aurbach, D. Effect of fluoroethylene carbonate (FEC) on the performance and surface chemistry of Si-nanowire Li-ion battery anodes. *Langmuir* **2012**, *28*, 965–976.
- (30) Schroder, K. W.; Celio, H.; Webb, L. J.; Stevenson, K. J. Examining solid electrolyte interphase formation on crystalline silicon electrodes: influence of electrochemical preparation and ambient exposure conditions. *J. Phys. Chem. C* **2012**, *116*, 19737–19747.
- (31) Malmgren, S.; Ciosek, K.; Lindblad, R.; Plogmaker, S.; Kühn, J.; Rensmo, H.; Edström, K.; Hahlin, M. Consequences of air exposure on the lithiated graphite SEI. *Electrochim. Acta* **2013**, *105*, 83–91.
- (32) Nie, M.; Chalasani, D.; Abraham, D. P.; Chen, Y.; Bose, A.; Lucht, B. L. Lithium ion battery graphite solid electrolyte interphase revealed by microscopy and spectroscopy. *J. Phys. Chem. C* **2013**, *117*, 1257–1267.
- (33) Morcombe, C. R.; Zilm, K. W. Chemical shift referencing in MAS solid state NMR. *J. Magn. Reson.* **2003**, *162*, 479–486.
- (34) Apperley, D. C.; Harris, R. K.; Hodgkinson, P. Solid State NMR. Momentum Press, New York, 2012.
- (35) Massiot, D.; Fayon, F.; Capron, M.; King, I.; Le Calvé, S.; Alonso, B.; Durand, J.-O.; Bujoli, B.; Gan, Z.; Hoatson, G. Modelling one- and two-dimensional solid-state NMR spectra. *Magn. Reson. Chem.* **2002**, *40*, 70–76.
- (36) Thakur, R. S.; Kurur, N. D.; Madhu, P. K. Swept-frequency two-pulse phase modulation for heteronuclear dipolar decoupling in solid-state NMR. *Chem. Phys. Lett.* **2006**, *426*, 459–463.
- (37) Opella, S. J.; Frey, M. H. Selection of nonprotonated carbon resonances in solid-state nuclear magnetic resonance. *J. Am. Chem. Soc.* **1979**, *101*, 5854–5856.
- (38) Frisch, M. J. et al. Gaussian 09, Revision D.01. *Gaussian Inc., Wallingford CT* **2013**.
- (39) Lee, C.; Yang, W.; Parr, R. G. Development of the Colle-Salvetti correlation-energy formula into a functional of the electron density. *Phys. Rev. B* **1988**, *37*, 785–789.
- (40) Becke, A. D. Density-functional thermochemistry. III. The role of exact exchange. *J. Chem. Phys.* **1993**, *98*, 5648–5652.
- (41) Krishnan, R.; Binkley, J. S.; Seeger, R.; Pople, J. A. Self-consistent molecular orbital methods. XX. A basis set for correlated wave functions. *J. Chem. Phys.* **1980**, *72*, 650–654.
- (42) Frisch, M. J.; Pople, J. A.; Binkley, J. S. Self-consistent molecular orbital methods 25. Supplementary functions for Gaussian basis sets. *J. Chem. Phys.* **1984**, *80*, 3265–3269.
- (43) Dedryvere, R.; Gireaud, L.; Grugeon, S.; Laruelle, S.; Tarascon, J. M.; Gonbeau, D. Characterization of lithium alkyl carbonates by X-ray photoelectron spectroscopy: experimental and theoretical study. *J. Phys. Chem. B* **2005**, *109*, 15868–15875.
- (44) Verma, P.; Maire, P.; Novák, P. A review of the features and analyses of the solid electrolyte interphase in Li-ion batteries. *Electrochim. Acta* **2010**, *55*, 6332–6341.
- (45) Madec, L.; Petibon, R.; Tasaki, K.; Xia, J.; Sun, J. P.; Hill, I. G.; Dahn, J. R. Mechanism of action of ethylene sulfite and vinylene carbonate electrolyte additives in LiNi_{1/3}Mn_{1/3}Co_{1/3}O₂/graphite pouch cells: electrochemical, GC-MS and XPS analysis. *Phys Chem Chem Phys* **2015**, *17*, 27062–27076.
- (46) Chen, X.; Li, X.; Mei, D.; Feng, J.; Hu, M. Y.; Hu, J.; Engelhard, M.; Zheng, J.; Xu, W.; Xiao, J.; Liu, J.; Zhang, J.-G. Reduction mechanism of fluoroethylene carbonate for stable solid-electrolyte interphase film on silicon anode. *ChemSusChem* **2013**, *7*, 549–554.
- (47) Ota, H.; Sakata, Y.; Inoue, A.; Yamaguchi, S. Analysis of vinylene carbonate derived SEI layers on graphite anode. *J. Electrochem. Soc.* **2004**, *151*, A1659–A1669.
- (48) Madec, L.; Xia, J.; Petibon, R.; Nelson, K. J.; Sun, J.-P.; Hill, I. G.; Dahn, J. R. Effect of sulfate electrolyte additives on LiNi_{1/3}Mn_{1/3}Co_{1/3}O₂/graphite pouch cell Lifetime: correlation between XPS surface studies and electrochemical test results. *J. Phys. Chem. C* **2014**, *118*, 29608–29622.
- (49) Zhang, B.; Metzger, M.; Solchenbach, S.; Payne, M.; Meini, S.; Gasteiger, H. A.; Garsuch, A.; Lucht, B. L. Role of 1,3-propane sultone and vinylene carbonate in solid electrolyte interface formation and gas generation. *J. Phys. Chem. C* **2015**, *119*, 11337–11348.
- (50) Leskes, M.; Moore, A. J.; Goward, G. R.; Grey, C. P. Monitoring the electrochemical processes in the lithium-air battery by solid state NMR spectroscopy. *J. Phys. Chem. C* **2013**, *117*, 26929–26939.
- (51) Meyer, B. M.; Leifer, N.; Sakamoto, S.; Greenbaum, S. G.; Grey, C. P. High field multinuclear NMR investigation of the SEI layer in lithium rechargeable batteries. *Electrochem. Solid-State Lett.* **2005**, *8*, A145–A148.
- (52) Michan, A. L.; Divitini, G.; Pell, A. J.; Leskes, M.; Ducati, C.; Grey, C. P. Solid electrolyte interphase growth and capacity loss in silicon electrodes. *J. Am. Chem. Soc.* **2016**, *138*, 7918–7931.
- (53) Shkrob, I. A.; Wishart, J. F.; Abraham, D. P. What makes fluoroethylene carbonate different? *J. Phys. Chem. C* **2015**, *119*, 14954–14964.
- (54) Jung, R.; Metzger, M.; Haering, D.; Solchenbach, S.; Marino, C.; Tsiouvaras, N.; Stinner, C.; Gasteiger, H. A. Consumption of fluoroethylene carbonate (FEC) on Si-C composite electrodes for Li-ion batteries. *J. Electrochem. Soc.* **2016**, *163*, A1705–A1716.

- (55) Zhao, Y.; Zhang, Z. Thermodynamic properties of CO₂ conversion by sodium borohydride. *Chem. Eng. Technol.* **2014**, *38*, 110–116.

Graphical TOC Entry

