

Experimental Realization of a Quantum Dot Energy Harvester

G. Jaliel^{1,*}, R. K. Puddy¹, R. Sánchez², A. N. Jordan³, B. Sothmann⁴, I. Farrer⁵, J. P. Griffiths¹,
D. A. Ritchie¹ and C. G. Smith¹

¹*Cavendish Laboratory, University of Cambridge, JJ Thomson Avenue, Cambridge CB3 0HE, United Kingdom*

²*Departamento de Física Teórica de la Materia Condensada and Condensed Matter Physics Center (IFIMAC),
Universidad Autónoma de Madrid, E-28049 Madrid, Spain*

³*Department of Physics and Astronomy, University of Rochester, Rochester, New York 14627, USA*

⁴*Theoretische Physik, Universität Duisburg-Essen and CENIDE, D-47048 Duisburg, Germany*

⁵*Department of Electronic and Electrical Engineering, University of Sheffield,
Mappin Street, Sheffield S1 3JD, United Kingdom*

(Received 29 January 2019; revised manuscript received 26 April 2019; published 9 September 2019)

We demonstrate experimentally an autonomous nanoscale energy harvester that utilizes the physics of resonant tunneling quantum dots. Gate-defined quantum dots on GaAs/AlGaAs high-electron-mobility transistors are placed on either side of a hot-electron reservoir. The discrete energy levels of the quantum dots are tuned to be aligned with low energy electrons on one side and high energy electrons on the other side of the hot reservoir. The quantum dots thus act as energy filters and allow for the conversion of heat from the cavity into electrical power. Our energy harvester, measured at an estimated base temperature of 75 mK in a He³/He⁴ dilution refrigerator, can generate a thermal power of 0.13 fW for a temperature difference across each dot of about 67 mK.

DOI: 10.1103/PhysRevLett.123.117701

In recent years there has been an increased interest in devices which can convert waste heat into useful work [1]. Thermoelectric generators where a temperature bias applied to an electric conductor gives rise to a charge current flow are good candidates [2,3]. Unfortunately, current thermoelectric devices have relatively small efficiencies [4]. This issue can be overcome by nanoscale thermoelectrics where engineered band structures and quantum mechanical effects can give rise to an increased efficiency [5–7]. Quantum dots constitute an important element in designing highly efficient thermoelectrics [8–11] because their discrete resonant levels provide excellent energy filters. Thermoelectric effects have been investigated in various quantum-dot setups [12–23].

Energy harvesting devices require that the energy source is separated from the electrical circuit, so no charge is extracted from it [24]. This can be accomplished in three-terminal devices where a hot terminal injects heat but no charge into the setup, thus driving a charge current between two cold reservoirs. There have been a number of proposals for these kinds of energy harvesters [25–44]. Three-terminal heat engines based on Coulomb-coupled quantum dots [26,27] have been realized experimentally recently [45–47]. Because of their design they are however limited to low power. A three-terminal energy harvester based on two resonant-tunneling quantum dots with different energy levels overcomes this issue. It can, in principle, reach Carnot efficiency and can be optimized to achieve a large power in combination with a high efficiency at maximum

power [33]. A similar device has also been proposed [48,49], and later demonstrated [50], as a building block

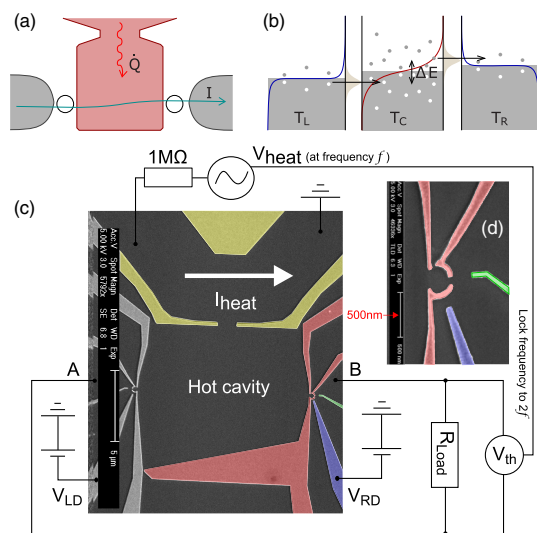


FIG. 1. Resonant tunneling energy harvester. (a) Two quantum dots connect two electronic leads (at temperature $T_0 = T_L = T_R$) to a hot cavity at T_C . A heat current \dot{Q} at frequency f is absorbed by the flowing electrons to generate a heat current I at frequency $2f$. (b) Relative energy diagram of the heat engine. Tuning the resonant level positions filters tunneling transitions with an energy gain ΔE . (c) False color SEM image of the device with the electrical circuit used for the thermopower measurement. (d) Enlarged false-color-SEM image of the right quantum dot.

of a nanoscale refrigerator. In this Letter, we experimentally realize a resonant-tunneling energy harvester and demonstrate its ability to generate electrical power in an external load arising from energy exchanges between a hot and a cold reservoir. Importantly, no external drive or cycling is required; that is, the system is entirely autonomous and begins producing power as soon as a thermal gradient is present.

The system we have investigated, shown in Fig. 1, is comprised of two quantum dots that connect a hot cavity to two cold reservoirs [33]. By putting two quantum dots in series with a hot cavity, electrons that enter via the left dot are forced to gain a prescribed energy in order to exit through the right dot, transporting a single electron charge from left to right, cf., Fig. 1(a). Constrained by the conservation of global charge and energy in the device, this thermal energy gain of electrons will be converted into electrical current [33].

Figure 1(c) shows a false-colored scanning electron micrograph (SEM) image of a typical device we tested, along with the electrical circuit used in the experiments. Ti/Au gates were patterned on the surface of GaAs/AlGaAs heterostructure material using electron-beam lithography. The 2DEG was 110 nm below the surface, and was contacted by annealing AuGeNi Ohmic contacts. The mobility μ and carrier concentration n of the 2DEG were measured to be $\mu \approx 3.38 \times 10^6 \text{ cm}^2 \text{ V}^{-1} \text{ s}^{-1}$ and $n \approx 1.35 \times 10^{11} \text{ cm}^{-2}$ at 1.5 K. The surface gates define a cavity of $90 \mu\text{m}^2$ area at the central 2DEG region with two quantum dots, respectively, on the left and the right sides, and a heating channel on the top. The quantum dots, of 310 nm diameter, as shown in Fig. 1(d), are constructed of three barrier gates [colored red in Fig. 1(c)], one detector gate (colored green), and one plunger gate (colored blue). Both dots were found to have charging energies of approximately 1.5 meV and first excited states always at least $250 \mu\text{eV}$ above the ground state. The top heating channel [gates colored yellow in Fig. 1(c)] is connected to the central cavity via a gap of $1.26 \mu\text{m}$, which allows hot electrons to traverse into the cavity and form different temperature profiles. Measurements were performed in a He^3/He^4 dilution refrigerator at an estimated base temperature T_0 of 75 mK. The experiment was repeated with two samples, which are similar in design but have different resonances for the quantum dots.

The thermal power generated by the energy harvester was measured with the setup in Fig. 1(c). An ac current I_{Heat} which heats electrons at frequency $f = 33 \text{ Hz}$ was applied to the heating channel using a lock-in amplifier, and the thermal voltage V_{th} was measured across $A - B$, with another amplifier locking in at frequency $2f$, while stepping the voltage V_{LD} on the left dot plunger gate and sweeping the voltage V_{RD} on the right dot plunger gate through their respective Coulomb resonance. Since the heating power varies as I^2 , the electron temperature in the cavity oscillates

at twice the frequency of the current I_{Heat} . Thus it was necessary to phase lock to the $2f$ component of V_{th} [14]. The temperatures of the central cavity for different ac currents may be estimated by fitting the differential conductance of the quantum dots with a thermally broadened resonance, see Supplemental Material [51] for details. The cold reservoirs, which we assume to be at base temperature T_0 , are connected externally by a load resistor, R_{Load} . The thermal power is then extracted by $P = V_{\text{th}}^2/R_{\text{Load}}$. In potential applications the heating channel would be replaced by the heat source we wish to harvest energy from and the resistor R_{Load} represents an external device where useful work is done [33].

Figure 2(a) shows the thermal voltage between A and B [in Fig. 1(c)], V_{th} , measured with a heating current $I_{\text{Heat}} = 100 \text{ nA}$ and a load resistor $R_{\text{Load}} = 500 \text{ k}\Omega$ in the circuit. The negative thermal voltage appears at $V_{\text{LD}} \approx -1.924 \text{ V}$ for the left dot, as shown in Fig. 2(c), and $V_{\text{RD}} \approx -0.805 \text{ V}$ for the right dot, as in Fig. 2(b). Figure 2(d) is the thermal power extracted from the thermal voltage of Fig. 2(a), through $P = V_{\text{th}}^2/R_{\text{Load}}$. The maximum thermal power is found at $(-1.924, -0.805) \text{ V}$, followed by the second largest thermal power point at $(-1.907, -0.829) \text{ V}$, in Fig. 2(d). The maxima appear in the vicinity of the electrical conductance peaks shown in Fig. 2(e) and Fig. 2(f), respectively. This is because when both charge and heat are exclusively carried by electrons, for both diffusive and ballistic transport, the Seebeck coefficient (thermopower) S is related to the energy derivative of the conductance G [55],

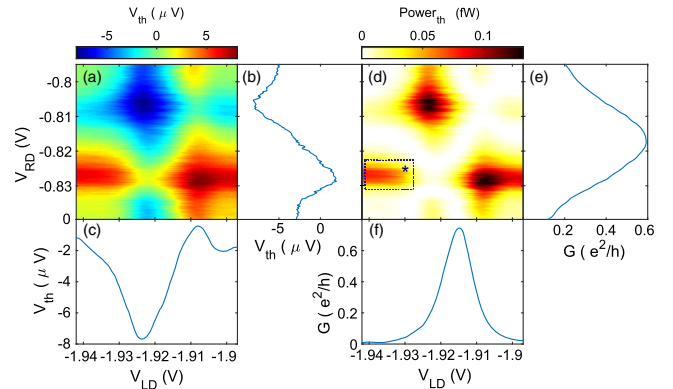


FIG. 2. (a) The thermal voltage V_{th} , across the device, as a function of left and right plunger gates measured while an ac current, $I_{\text{heat}} = 100 \text{ nA}$, is applied to the heating channel. The applied I_{heat} results in an estimated temperature difference of $\Delta T = T_C - T_L \approx 47 \text{ mK}$ across the dots. (b) and (c) Line graphs through (a) at $V_{\text{LD}} = -1.924 \text{ V}$ and $V_{\text{RD}} = -0.805 \text{ V}$, respectively. (d) Estimated power output of the device showing the two expected operational points and a third (highlighted by the box with a mark star $*$) due to external circuit impedance. The power is given by $P = V_{\text{th}}^2/R_{\text{Load}}$, where R_{Load} is the resistance loading on the circuit. (e) and (f) Conductance peaks of the two dots as a function of the respective gate voltage.

$$S = \frac{V_{\text{th}}}{T_C - T_0} \Big|_{I=0} = -\frac{\pi^2 k_B^2}{3e} (T_C - T_0) \frac{\partial \ln G}{\partial \mu}. \quad (1)$$

Here T_C is the electron temperature of the cavity, T_0 is the temperature of cold reservoirs, and μ is the chemical potential of the contacts. Meanwhile, the thermal voltage peaks in Fig. 2(a) are also related to the energy derivative of the conductance of the Figs. 2(e) and 2(f), as shown Eq. (1). Some thermopower is detected while only one dot is open on resonance, such as the area marked by the star in Fig. 2(d). This arises from the influence of the external circuit impedance.

Thermopower measurements were carried out using resistance values (R_{Load}) from 50 k Ω to 3.9 M Ω in the circuit, whilst an ac current of 60, 80, and 100 nA is applied on the heating channel. The heating currents of 60, 80, and 100 nA correspond to 122, 130, and 140 mK, respectively, as discussed in the Supplemental Material [51]. Figure 3 depicts the maximal generated power for each measurement as a function of the load resistance and the relative thermal voltages respectively, where black circles represent the experimental data while a current of 60 nA is applied on the heating channel, red stars for 80 nA, and blue triangles for 100 nA. (Solid lines represent results from theoretical modeling and will be discussed later). For increasing resistance R_{Load} , the power increases, reaches a maximum and then drops down, as shown in Fig. 3(a). As the heating current in the channel is increased, the power also rises. This is because the cavity temperature increases with the heating current, resulting in more electrons tunneling through the two dots and converting more energy to electrical current efficiently, as predicted in the theoretical proposal [33]. Interestingly, the maximum power always appears around $R_{\text{Load}} \approx 500$ k Ω for all heating currents, corresponding to impedance matching between the heat engine and the resistor. The power vs thermal voltage in Fig. 3(b) gives an estimate of the open-circuit stall voltage of our device in each configuration. In the linear regime one expects the maximal power to occur at half the stall voltage [24]. The asymmetric dependence of the measurements suggests the presence of non-linear effects.

We next turn to the efficiency of heat to work conversion which is defined as the ratio of the generated electrical power P to the heat current from the hot reservoir \dot{Q} . The heat current is given by $\dot{Q} = \kappa \Delta T = \kappa (T_C - T_0)$ where the thermal conductance κ can be estimated from the electrical conductance G via the Wiedemann-Franz law, $\kappa = GL\bar{T}$, where L is the Lorenz number, $\bar{T} = (T_C + T_0)/2$ and G is the combination of the conductance at $V_{\text{RD}} = -0.805$ V in Fig. 2(e) and that at $V_{\text{LD}} = -1.924$ V in Fig. 2(f). We remark that the Wiedemann-Franz law in general is violated for mesoscopic conductors with strongly energy dependent transmissions such as quantum dots [56–59]. As the thermal conductance cannot be measured directly in our setup, we still use it to obtain a lower bound on the thermoelectric efficiency given by

$$\eta_{w-f} = \frac{V_{\text{th}}^2}{\kappa \Delta T R_{\text{Load}}} = \frac{V_{\text{th}}^2}{GL\bar{T}\Delta T R_{\text{Load}}}, \quad (2)$$

which can be compared with the theoretical efficiency calculated below. Figure 3(c) depicts the ratio of the estimated efficiency from Eq. (2) to the Carnot efficiency ($\eta_C = 1 - T_0/T_C$) for 60, 80, and 100 nA on the heating channel, respectively.

The experimental data in Figs. 2 and 3 are reproduced by the model of Ref. [33], which we generalize to incorporate the effect of the external circuit. The thermoelectric transport through each dot can be described by the Landauer-Büttiker formalism, with the expression

$$\mathcal{I}_{l,n} = \frac{2}{h} \int dE E^n T_l(E) [f_l(E) - f_C(E)], \quad (3)$$

giving the charge $I_l = e\mathcal{I}_{l,0}$ and energy $J_l = \mathcal{I}_{l,1}$ currents at lead $l = L, R$. The quantum dot resonances are defined by a transmission coefficient

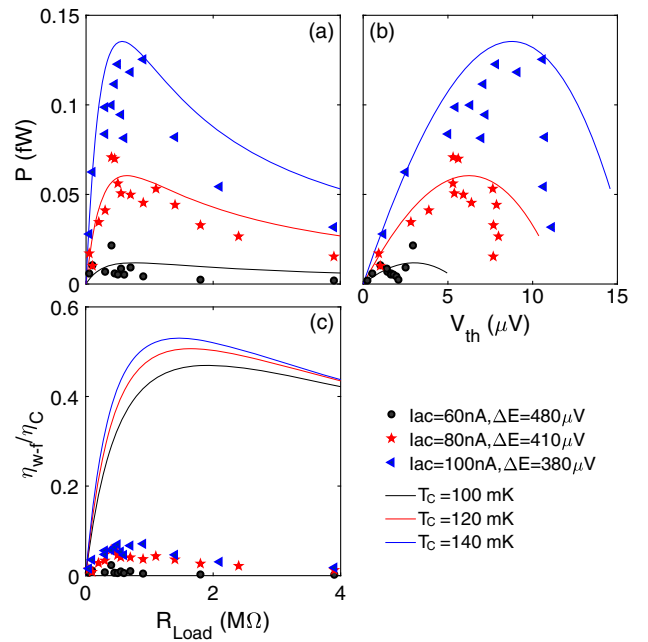


FIG. 3. Engine characteristics. The points of black circles, red stars, and blue triangles show results of experimental measurements. Panel (a) depicts the maximum thermal power from the measurements with different loading resistance, while applying ac current 60 (black circles), 80 (red stars), and 100 nA (blue triangles) on the heating channel. Panel (b) shows the thermal power and its relative thermal voltage, which is also the bias voltage between $A - B$ in Fig. 1(c). Panel (c) depicts the ratio of the estimated efficiency through Eq. (2) with the Carnot efficiency while changing the resistance. The solid lines show the relative theoretical modeling for different heating currents leading to different cavity temperatures, T_C . The theoretical efficiency in (c) is computed from Eq. (6), with resonances of $\Gamma_L = \Gamma_R = 3.5$ μeV and the energy level difference of $\Delta E = 45$ μeV of the two dots. Parameter $A_1 = 0.8$ is related to the quantum dot barriers. The base temperature in the theoretical model is 85 mK.

$$\mathcal{T}_l(E) = A_l \frac{\Gamma_l^2/4}{(E - \varepsilon_l)^2 + \Gamma_l^2/4}, \quad (4)$$

where the parameter A_l depends on the asymmetry of the quantum dot barriers [60]. The quantum dot resonant energies are tuned with gate voltages, $\varepsilon_l = \varepsilon_{l,0} - e\alpha_l V_{gl}$. In our experiment, the width Γ_l is thermally broadened beyond the natural line width of the level. As no charge is injected from the heating channel into the conductor, the conservation laws for charge and energy read

$$I_L + I_R = 0, \quad J_L + J_R + \dot{Q} = 0, \quad (5)$$

where \dot{Q} is the heat current injected into the central cavity. For a closed circuit where the energy harvester powers an impedance R_{Load} , the voltages are set via Ohm's law, producing the thermovoltage, $V_{\text{th}} = I_L R_{\text{Load}}$ and power of Fig. 4. Accounting for the external resistance in the circuit gives rise to additional features not present in an open-circuit model [33], such as the vertical and horizontal lines in Fig. 4. Our simple model based on resonant tunneling captures all the features of the experiment, seen by the comparison of experimental data (points of black circles, red stars, and blue triangles) and theoretical modeling results (solid lines in black, red, and blue) in Fig. 3. The theoretical efficiency, shown as solid lines in Fig. 3(c), is computed with the general expression of the heat current evaluated at the obtained thermovoltage,

$$\eta = V_{\text{th}}^2 / (\dot{Q} R_{\text{Load}}). \quad (6)$$

Figure 3(c) suggests the top theoretical efficiency of the device is $\sim 0.5 \eta_C$, for the considered parameters. Given its overall good agreement with experimental results, this theoretical model provides a more realistic estimate of the

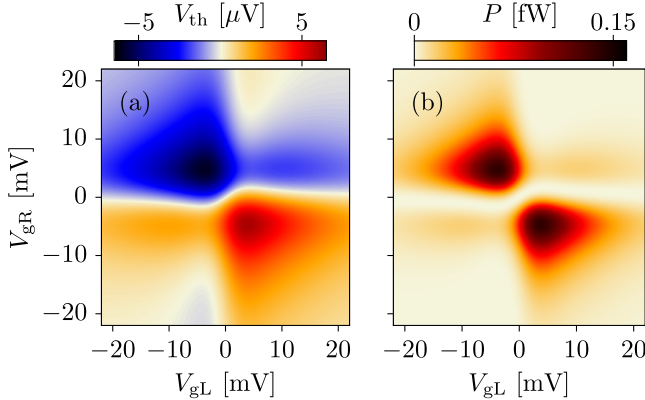


FIG. 4. Theoretical calculation of (a) the thermovoltage and (b) the generated power with parameters of $A_L = A_R = 1$, $\Gamma_L = 0.2$ meV, $\Gamma_R = 0.1$ meV, $\alpha_L = 0.026$ and $\alpha_R = 0.014$, the base temperature of $T_0 = 85$ mK and the cavity temperature of $T_C = 170$ mK. The influence of the external load resistance is taken into account.

efficiency with its direct access to the heat current, \dot{Q} . The experimental estimates in Fig. 3(c), extracted by Eq. (2), are only the lower bound of the efficiency, where the thermal conductance is overestimated because quantum dots have a smaller Lorenz ratio than L due to the violation of the Wiedemann-Franz law as discussed earlier [56–59].

In conclusion, we have experimentally realized an energy harvester based on resonant-tunneling quantum dots [33] which can generate a power of 0.13 fW in an estimated efficiency with a lower bound around $0.1 \eta_C$. Our theoretical model (not affected by limitations of the Wiedemann-Franz law) suggests the actual efficiency to be about $0.5 \eta_C$. Experimental observations of thermal power, voltage and efficiency at different values of I_{Heat} and R_{Load} have also been reproduced by this model. There are small quantitative differences between experimental results and theoretical modeling in terms of parameters, such as electrical temperatures and energy level difference. This may be explained by asymmetric barriers, accidental degeneracies or the broadened lifetime width of the quantum dots, as well as charging effects in the nonlinear regime. Also, the oscillation brought with the ac heating and ac measurements can increase thermal broadening in the cavity, and therefore cause inaccuracy in the measurement results. Overall, this proof-of-principle experiment demonstrates the basic soundness of the theory of mesoscopic energy harvesting with energy filtering techniques at the quantum level, realizing a heat engine.

We propose several possible improvements for future work. First, we can improve the power and efficiency by optimizing the resonance width Γ_l as well as the symmetry of the quantum dots. Second, dc heating and measurement techniques can be used to avoid unnecessary oscillations of voltages and temperatures in the device. Finally, the performance of the energy harvester may be enhanced by scaling it up in size with resonant-tunneling quantum wells, which may increase the maximum power up to fractions of W/cm² at 300 K [34], or by using smaller dots or molecules, whose large level spacing allows the system to operate at higher temperatures [33,61,62].

We are grateful to Dr. J. Waldie for technical assistance. This work was funded by EPSRC(UK). G. J. acknowledges financial support from China Scholarship Council and GBCET. R. S. acknowledges financial support from the Spanish MINECO via Grant No. FIS2015-74472-JIN (AEI/FEDER/UE), the Ramón y Cajal program RYC-2016-20778 and through the “María de Maeztu” Programme for Units of Excellence in R&D (MDM-2014-0377). Work by A. N. J. was supported by the U.S. Department of Energy (DOE), Office of Science, Basic Energy Sciences (BES) under Award No. DE-SC0017890. B. S. acknowledges financial support from the Ministry of Innovation NRW via the “Programm zur Förderung der Rückkehr des hochqualifizierten Forschungsnachwuchses

aus dem Ausland.” This research was supported in part by the National Science Foundation under Grant No. NSF PHY-1748958.

*jg737@cam.ac.uk

- [1] B. E. White, *Nat. Nanotechnol.* **3**, 71 (2008).
- [2] A. Shakouri, *Annu. Rev. Mater. Res.* **41**, 399 (2011).
- [3] G. Benenti, G. Casati, K. Saito, and R. Whitney, *Phys. Rep.* **694**, 1 (2017).
- [4] D. M. Rowe, *Int. J. Innovations Energy Syst. Power* **1**, 13 (2006).
- [5] L. D. Hicks and M. S. Dresselhaus, *Phys. Rev. B* **47**, 12727 (1993).
- [6] L. D. Hicks and M. S. Dresselhaus, *Phys. Rev. B* **47**, 16631 (1993).
- [7] G. D. Mahan and J. O. Sofo, *Proc. Natl. Acad. Sci. U.S.A.* **93**, 7436 (1996).
- [8] C. W. J. Beenakker and A. A. M. Staring, *Phys. Rev. B* **46**, 9667 (1992).
- [9] T. E. Humphrey, R. Newbury, R. P. Taylor, and H. Linke, *Phys. Rev. Lett.* **89**, 116801 (2002).
- [10] N. Nakpathomkun, H. Q. Xu, and H. Linke, *Phys. Rev. B* **82**, 235428 (2010).
- [11] M. Esposito, K. Lindenberg, and C. Van den Broeck, *Europhys. Lett.* **85**, 60010 (2009).
- [12] A. A. M. Staring, L. W. Molenkamp, B. W. Alphenaar, H. van Houten, O. J. A. Buyk, M. A. A. Mabesoone, C. W. J. Beenakker, and C. T. Foxon, *Europhys. Lett.* **22**, 57 (1993).
- [13] A. S. Dzurak, C. G. Smith, M. Pepper, D. A. Ritchie, J. E. F. Frost, G. A. C. Jones, and D. G. Hasko, *Solid State Commun.* **87**, 1145 (1993).
- [14] A. S. Dzurak, C. G. Smith, C. H. W. Barnes, M. Pepper, L. Martín-Moreno, C. T. Liang, D. A. Ritchie, and G. A. C. Jones, *Phys. Rev. B* **55**, R10197 (1997).
- [15] S. F. Godijn, S. Möller, H. Buhmann, L. W. Molenkamp, and S. A. van Langen, *Phys. Rev. Lett.* **82**, 2927 (1999).
- [16] J. P. Small, K. M. Perez, and P. Kim, *Phys. Rev. Lett.* **91**, 256801 (2003).
- [17] M. C. Llaguno, J. E. Fischer, A. T. Johnson, and J. Hone, *Nano Lett.* **4**, 45 (2004).
- [18] R. Scheibner, H. Buhmann, D. Reuter, M. N. Kiselev, and L. W. Molenkamp, *Phys. Rev. Lett.* **95**, 176602 (2005).
- [19] R. Scheibner, E. G. Novik, T. Borzenko, M. König, D. Reuter, A. D. Wieck, H. Buhmann, and L. W. Molenkamp, *Phys. Rev. B* **75**, 041301(R) (2007).
- [20] S. F. Svensson, A. I. Persson, E. A. Hoffmann, N. Nakpathomkun, H. A. Nilsson, H. Q. Xu, L. Samuelson, and H. Linke, *New J. Phys.* **14**, 033041 (2012).
- [21] S. F. Svensson, E. A. Hoffmann, N. Nakpathomkun, P. M. Wu, H. Q. Xu, H. A. Nilsson, D. Sánchez, V. Kashcheyevs, and H. Linke, *New J. Phys.* **15**, 105011 (2013).
- [22] H. Thierschmann, M. Henke, J. Knorr, L. Maier, C. Heyn, W. Hansen, H. Buhmann, and L. W. Molenkamp, *New J. Phys.* **15**, 123010 (2013).
- [23] M. Josefsson, A. Svilans, A. M. Burke, E. A. Hoffmann, S. Fahlvik, C. Thelander, M. Leijnse, and H. Linke, *Nat. Nanotechnol.* **13**, 920 (2018).
- [24] B. Sothmann, R. Sánchez, and A. N. Jordan, *Nanotechnology* **26**, 032001 (2015).
- [25] O. Entin-Wohlman, Y. Imry, and A. Aharony, *Phys. Rev. B* **82**, 115314 (2010).
- [26] R. Sánchez and M. Büttiker, *Phys. Rev. B* **83**, 085428 (2011).
- [27] B. Sothmann, R. Sánchez, A. N. Jordan, and M. Büttiker, *Phys. Rev. B* **85**, 205301 (2012).
- [28] B. Sothmann and M. Büttiker, *Europhys. Lett.* **99**, 27001 (2012).
- [29] T. Ruokola and T. Ojanen, *Phys. Rev. B* **86**, 035454 (2012).
- [30] J.-H. Jiang, O. Entin-Wohlman, and Y. Imry, *Phys. Rev. B* **85**, 075412 (2012).
- [31] J.-H. Jiang, O. Entin-Wohlman, and Y. Imry, *New J. Phys.* **15**, 075021 (2013).
- [32] P. Machon, M. Eschrig, and W. Belzig, *Phys. Rev. Lett.* **110**, 047002 (2013).
- [33] A. N. Jordan, B. Sothmann, R. Sánchez, and M. Büttiker, *Phys. Rev. B* **87**, 075312 (2013).
- [34] B. Sothmann, R. Sánchez, A. N. Jordan, and M. Büttiker, *New J. Phys.* **15**, 095021 (2013).
- [35] C. Bergenfeldt, P. Samuelsson, B. Sothmann, C. Flindt, and M. Büttiker, *Phys. Rev. Lett.* **112**, 076803 (2014).
- [36] S. Donsa, S. Andergassen, and K. Held, *Phys. Rev. B* **89**, 125103 (2014).
- [37] F. Mazza, R. Bosisio, G. Benenti, V. Giovannetti, R. Fazio, and F. Taddei, *New J. Phys.* **16**, 085001 (2014).
- [38] F. Mazza, S. Valentini, R. Bosisio, G. Benenti, V. Giovannetti, R. Fazio, and F. Taddei, *Phys. Rev. B* **91**, 245435 (2015).
- [39] R. Sánchez, B. Sothmann, and A. N. Jordan, *Phys. Rev. Lett.* **114**, 146801 (2015).
- [40] R. Sánchez, B. Sothmann, and A. N. Jordan, *New J. Phys.* **17**, 075006 (2015).
- [41] P. P. Hofer and B. Sothmann, *Phys. Rev. B* **91**, 195406 (2015).
- [42] R. Bosisio, G. Fleury, J.-L. Pichard, and C. Gorini, *Phys. Rev. B* **93**, 165404 (2016).
- [43] B. Szukiewicz, U. Eckern, and K. I. Wysokiński, *New J. Phys.* **18**, 023050 (2016).
- [44] J.-H. Jiang and Y. Imry, *Phys. Rev. B* **97**, 125422 (2018).
- [45] H. Thierschmann, R. Sánchez, B. Sothmann, F. Arnold, C. Heyn, W. Hansen, H. Buhmann, and L. W. Molenkamp, *Nat. Nanotechnol.* **10**, 854 (2015).
- [46] B. Roche, P. Roulleau, T. Jullien, Y. Jompol, I. Farrer, D. A. Ritchie, and D. C. Glattli, *Nat. Commun.* **6**, 6738 (2015).
- [47] F. Hartmann, P. Pfeffer, S. Höfling, M. Kamp, and L. Worschech, *Phys. Rev. Lett.* **114**, 146805 (2015).
- [48] H. L. Edwards, Q. Niu, and A. L. de Lozanne, *Appl. Phys. Lett.* **63**, 1815 (1993).
- [49] H. L. Edwards, Q. Niu, G. A. Georgakis, and A. L. de Lozanne, *Phys. Rev. B* **52**, 5714 (1995).
- [50] J. R. Prance, C. G. Smith, J. P. Griffiths, S. J. Chorley, D. Anderson, G. A. C. Jones, I. Farrer, and D. A. Ritchie, *Phys. Rev. Lett.* **102**, 146602 (2009).
- [51] See Supplemental Material at <http://link.aps.org/supplemental/10.1103/PhysRevLett.123.117701> for the temperatures of the central cavity for different ac currents estimated by fitting the differential conductance of the quantum dots with a thermally broadened resonance,

- as well as, for the lever arms of each quantum dot extracted through their Coulomb diamonds, which includes Refs. [52–54].
- [52] E. B. Foxman, P. L. McEuen, U. Meirav, N. S. Wingreen, Y. Meir, P. A. Belk, N. R. Belk, M. A. Kastner, and S. J. Wind, *Phys. Rev. B* **47**, 10020 (1993).
- [53] Y. Y. Proskuryakov, J. T. Nicholls, D. I. Hadji-Ristic, A. Kristensen, and C. B. Sørensen, *Phys. Rev. B* **75**, 045308 (2007).
- [54] A. Mittal, R. G. Wheeler, M. W. Keller, D. E. Prober, and R. N. Sacks, *Surf. Sci.* **361–362**, 537 (1996).
- [55] N. J. Appleyard, J. T. Nicholls, M. Y. Simmons, W. R. Tribe, and M. Pepper, *Phys. Rev. Lett.* **81**, 3491 (1998).
- [56] B. Kubala, J. König, and J. Pekola, *Phys. Rev. Lett.* **100**, 066801 (2008).
- [57] M. Tsaousidou and G. P. Triberis, *J. Phys. Condens. Matter* **22**, 355304 (2010).
- [58] P. A. Erdman, F. Mazza, R. Bosisio, G. Benenti, R. Fazio, and F. Taddei, *Phys. Rev. B* **95**, 245432 (2017).
- [59] B. Dutta, J. T. Peltonen, D. S. Antonenko, M. Meschke, M. A. Skvortsov, B. Kubala, J. König, C. B. Winkelmann, H. Courtois, and J. P. Pekola, *Phys. Rev. Lett.* **119**, 077701 (2017).
- [60] M. Büttiker, *IBM J. Res. Dev.* **32**, 63 (1988).
- [61] E. Leobandung, L. Guo, Y. Wang, and S. Y. Chou, *Appl. Phys. Lett.* **67**, 938 (1995).
- [62] J. Park, A. N. Pasupathy, J. I. Goldsmith, C. Chang, Y. Yaish, J. R. Petta, M. Rinkoski, J. P. Sethna, H. D. Abruna, P. L. McEuen, and D. C. Ralph, *Nature (London)* **417**, 722 (2002).