

Supporting Information: Mapping SERS in CB:Au Plasmonic Nano-Aggregates

Cloudy Carnegie¹, Rohit Chikkaraddy¹, Felix Benz¹, Bart de Nijs¹, William Deacon¹, Matthew Horton¹, Wenting Wang^{1,2}, Charlie Readman^{1,2}, Steven J. Barrow², Oren A Scherman², Jeremy J. Baumberg^{*,1}

¹ NanoPhotonics Centre, Cavendish Laboratory, University of Cambridge, Cambridge, CB3 0HE, UK

² Department of Chemistry, University of Cambridge, Lensfield Road, Cambridge CB2 1EW, UK

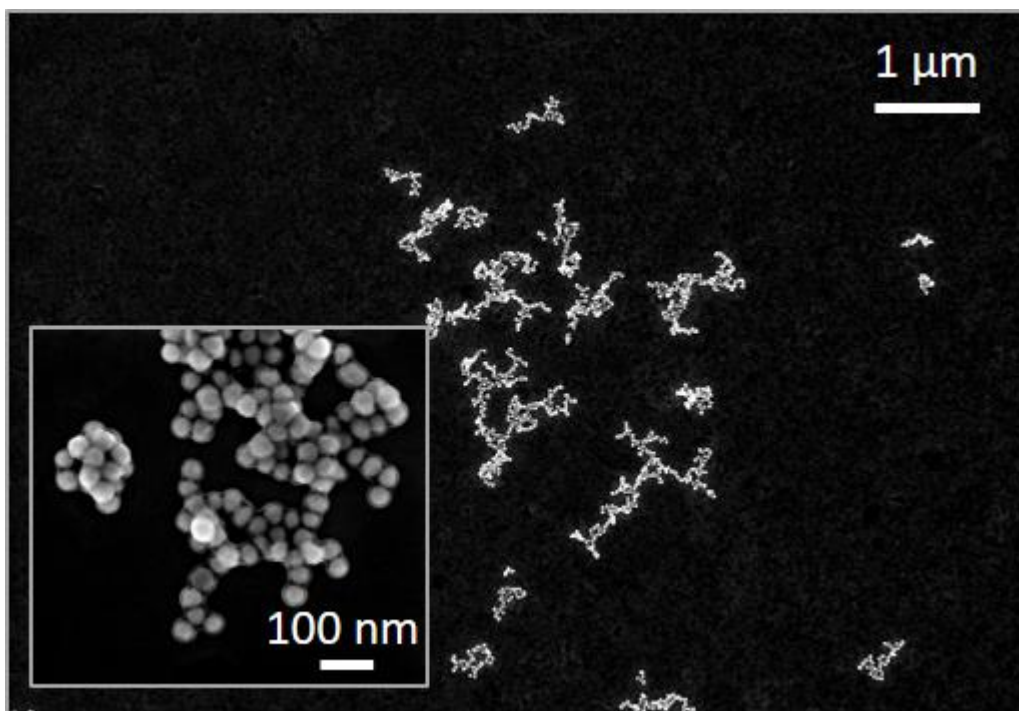


Fig SI 1. Scanning electron micrographs show 3D fractal geometry of 80 nm nanoparticle aggregates self-assembled via addition of cucurbit[7]uril.