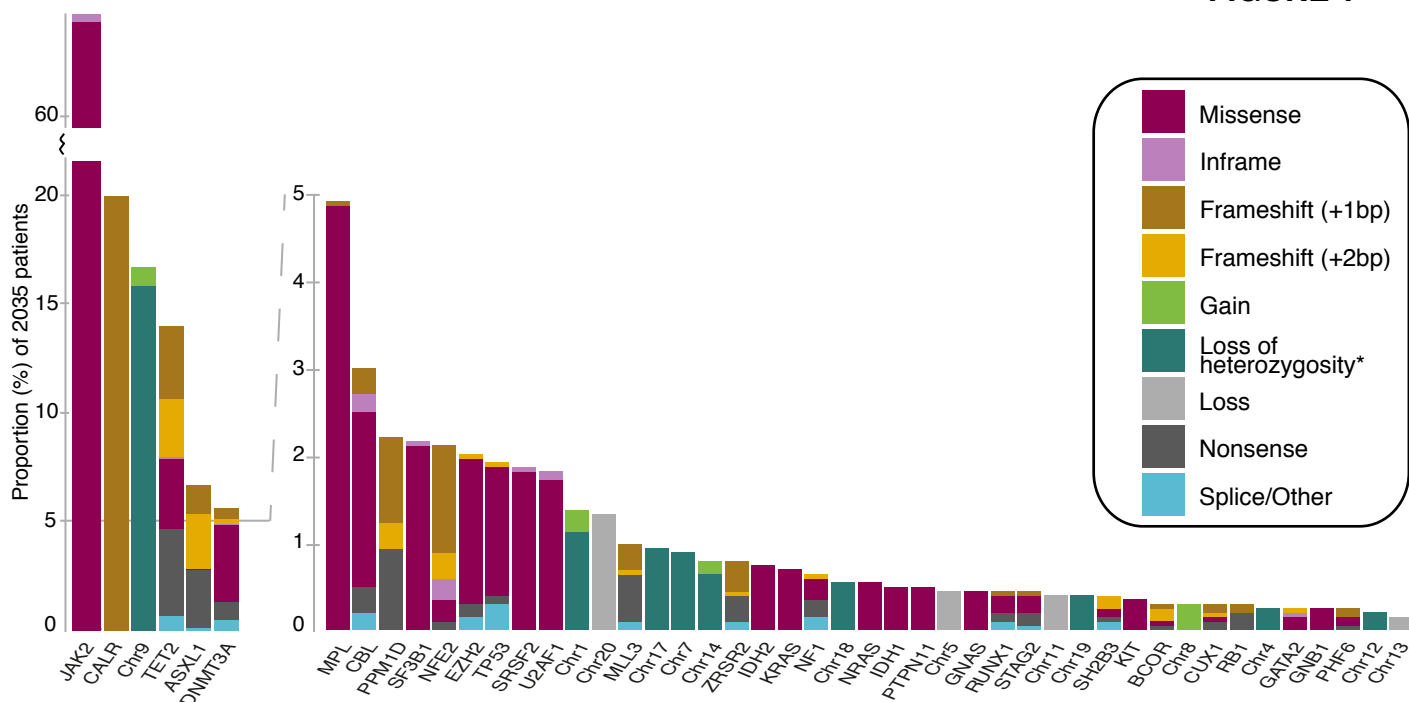
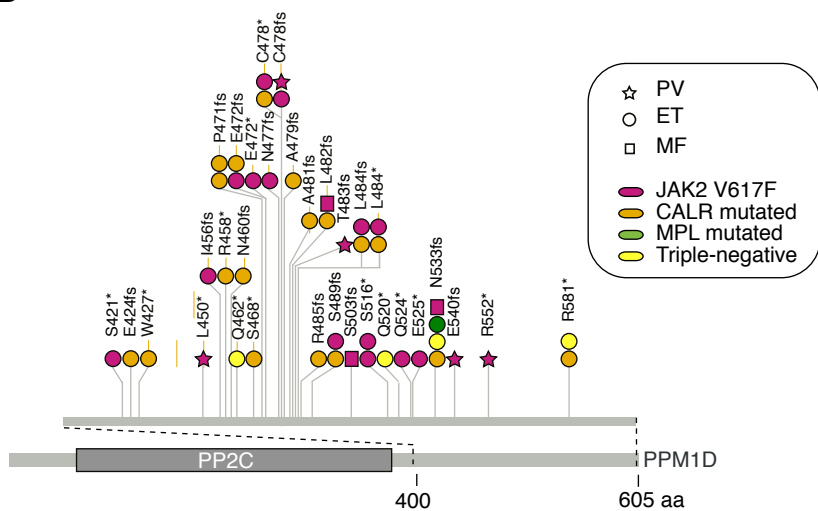


**FIGURE 1**

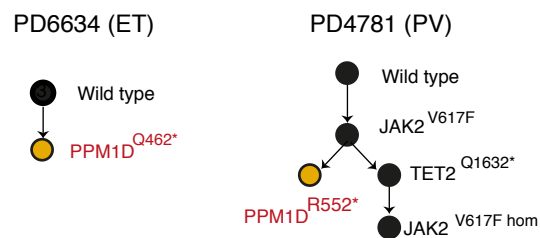
**A**



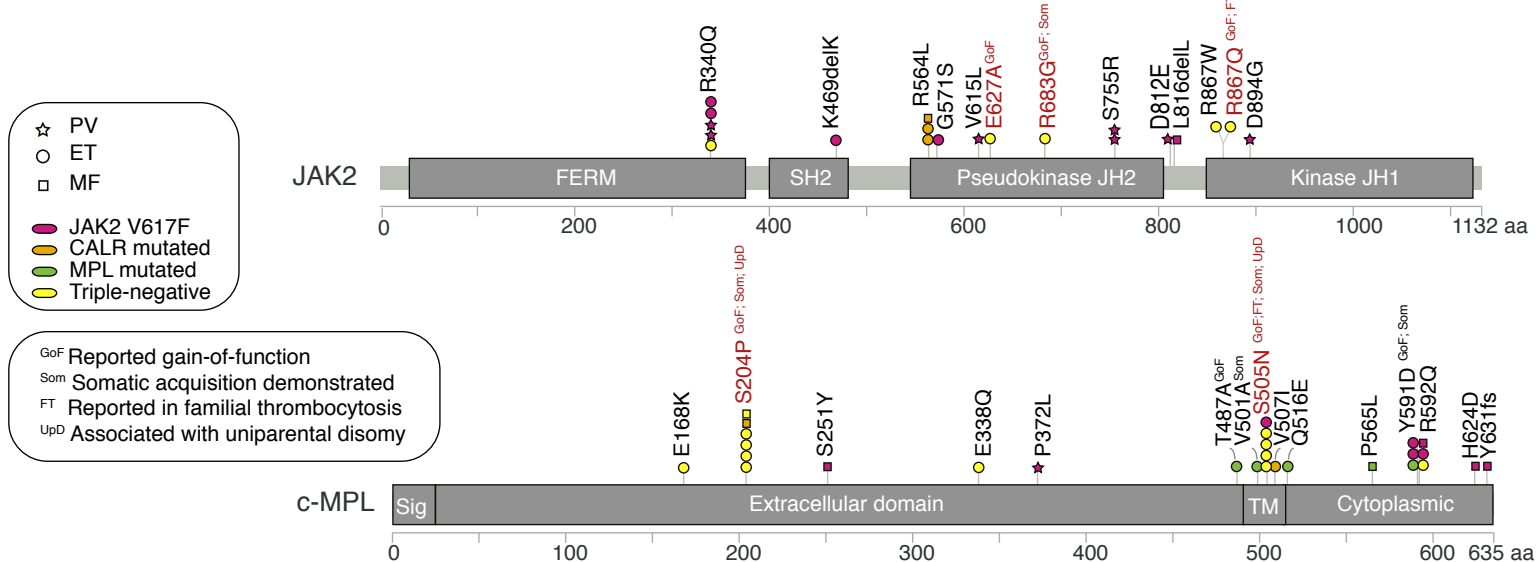
**B**



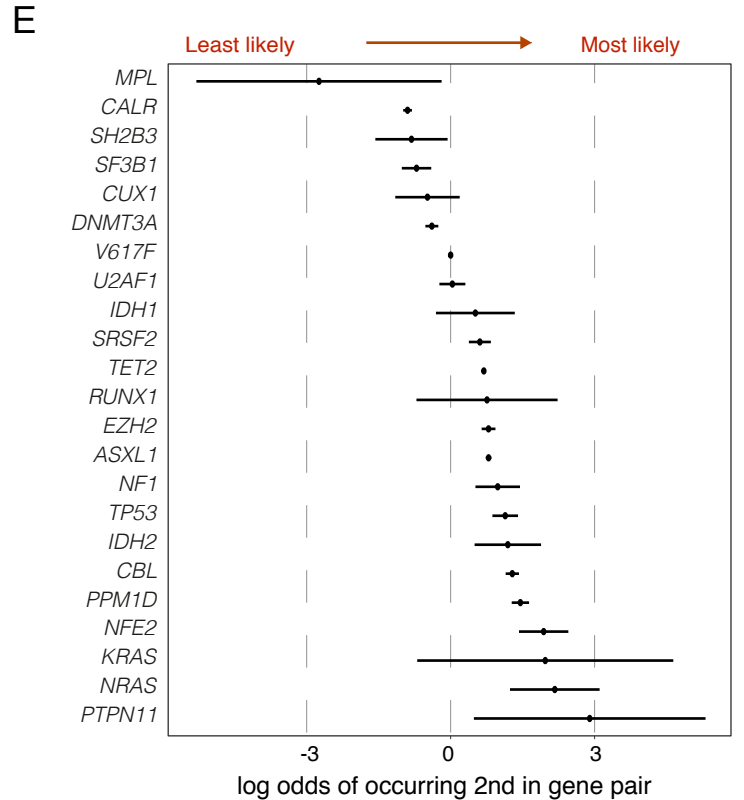
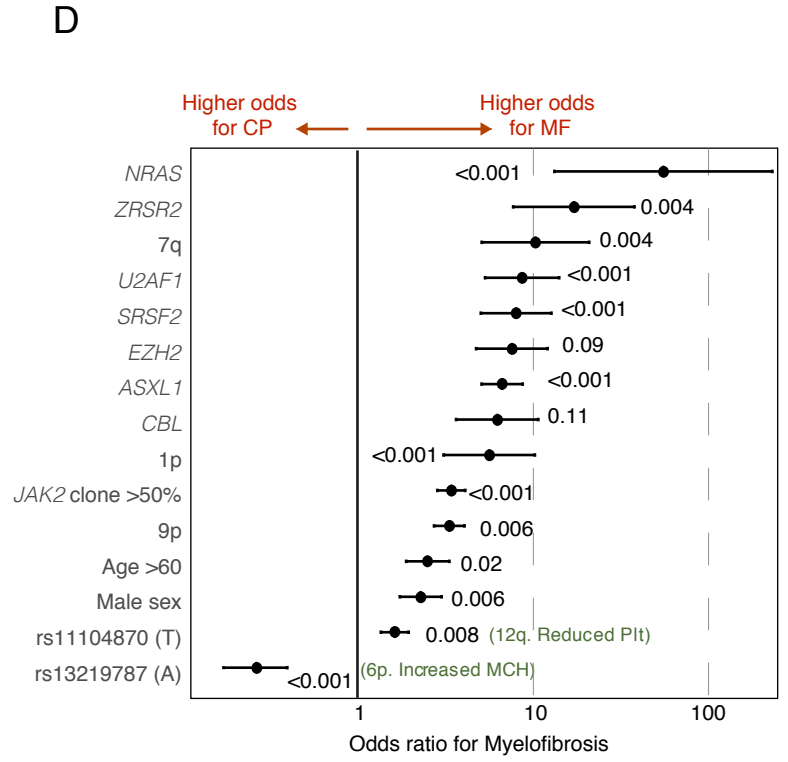
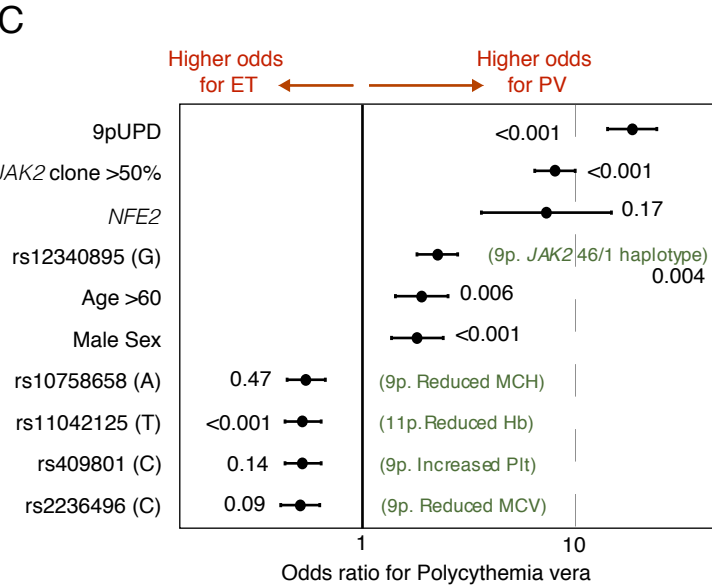
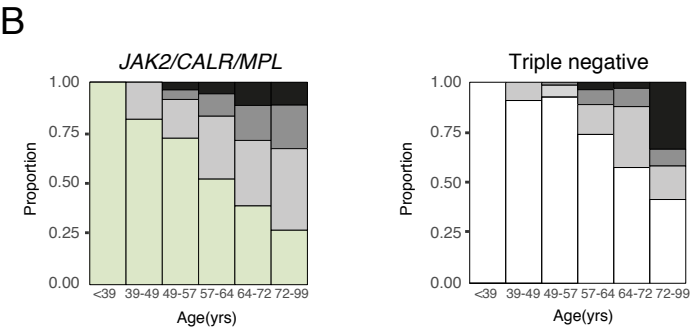
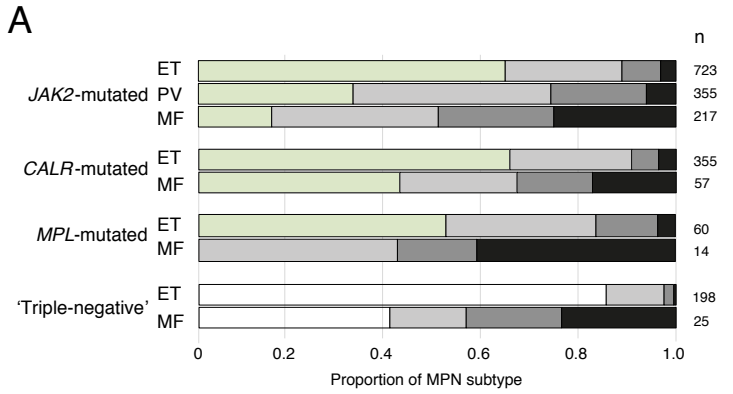
**C**

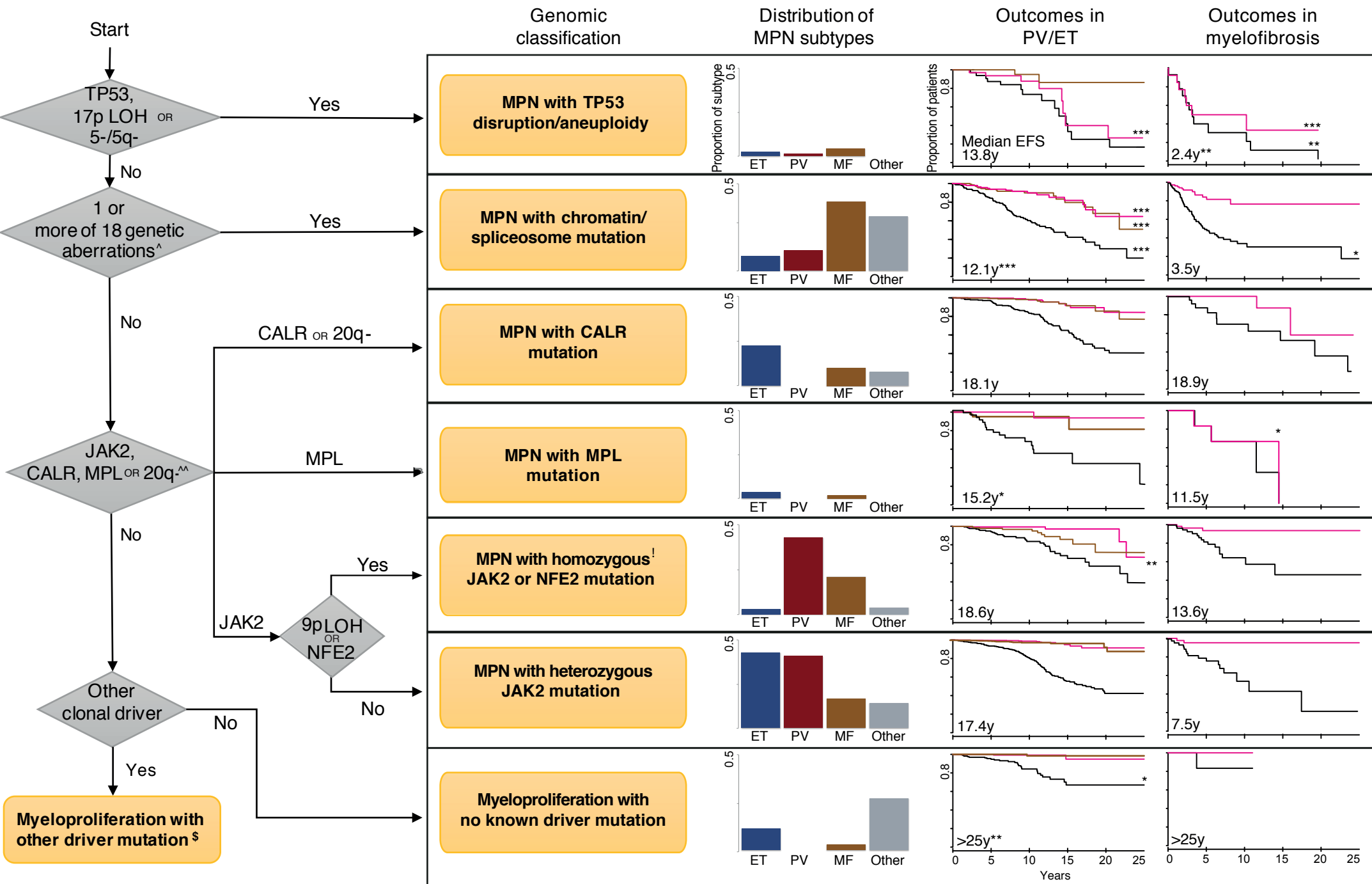


**D**



**FIGURE 2**





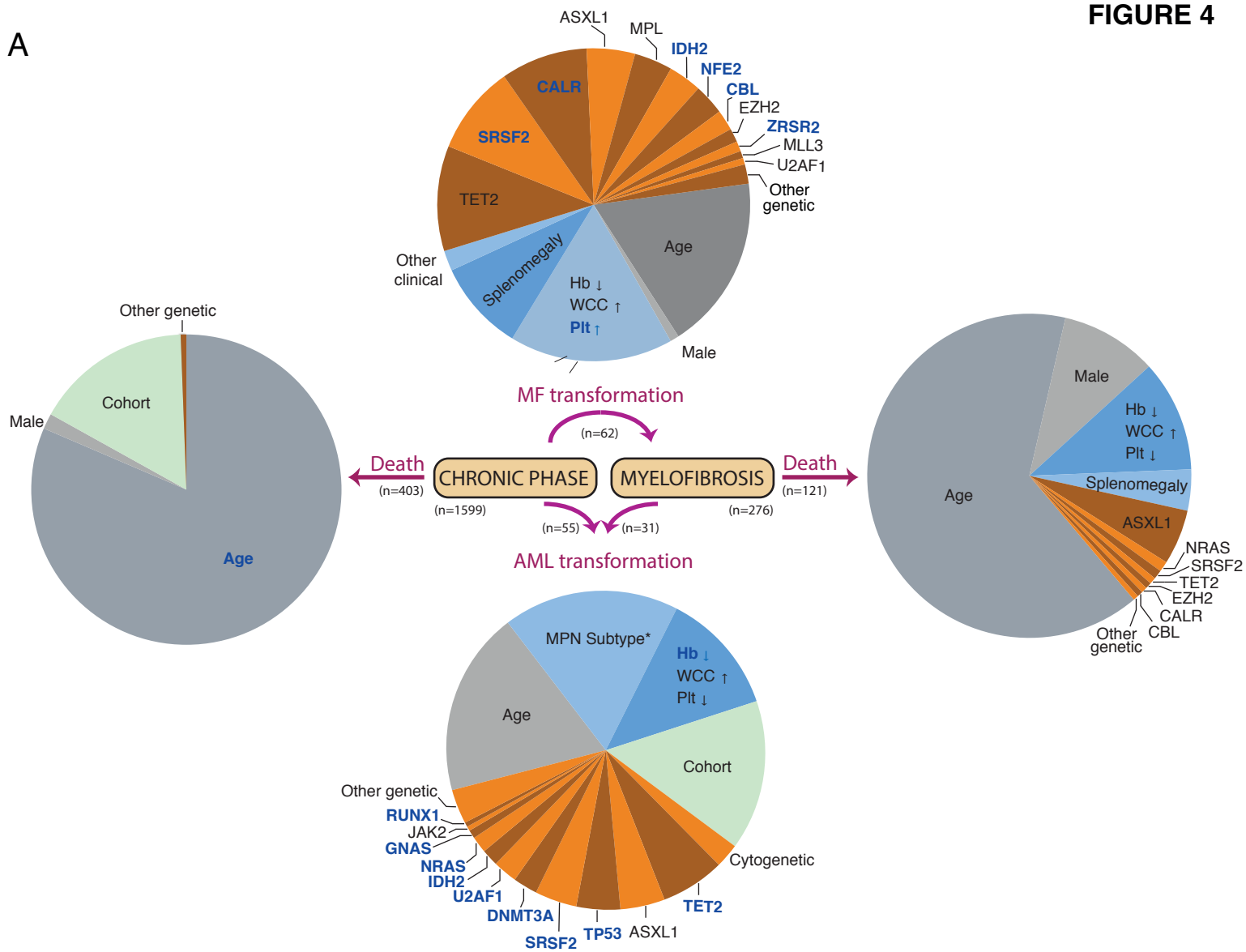
<sup>^</sup> *EZH2, IDH1/2, ASXL1, PHF6, CUX1, ZRSR2, SRSF2, U2AF1, KRAS, NRAS, GNAS, CBL, 7/7q LOH, 4q LOH, RUNX1, STAG2, BCOR*

AML transformation (pink line), MF transformation (brown line), Overall survival (black line)  
 \*p<0.05, \*\*p<0.01, \*\*\*p<0.001 for outcome difference compared with MPN with heterozygous JAK2 mutation

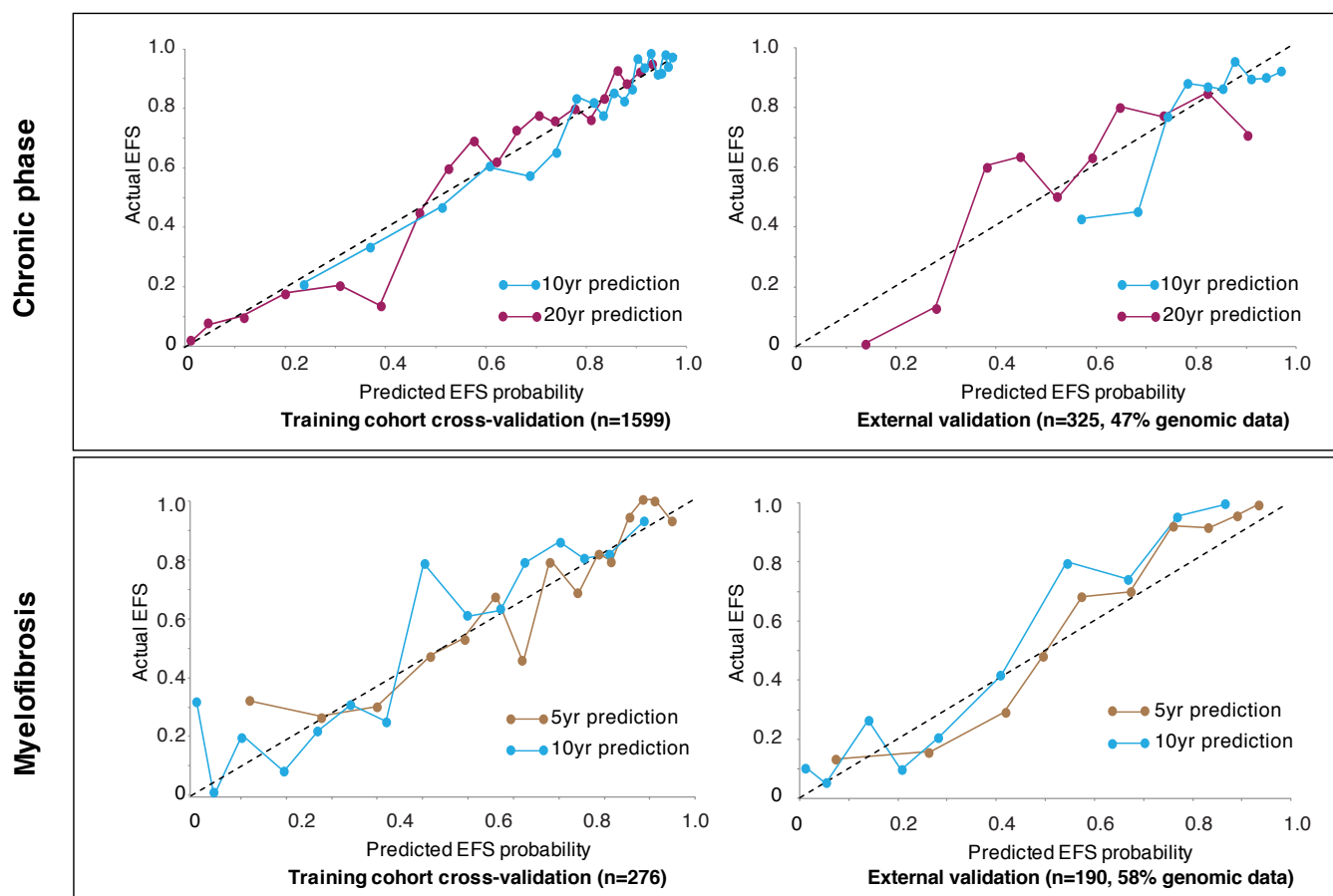
**FIGURE 3**

**FIGURE 4**

**A**



**B**



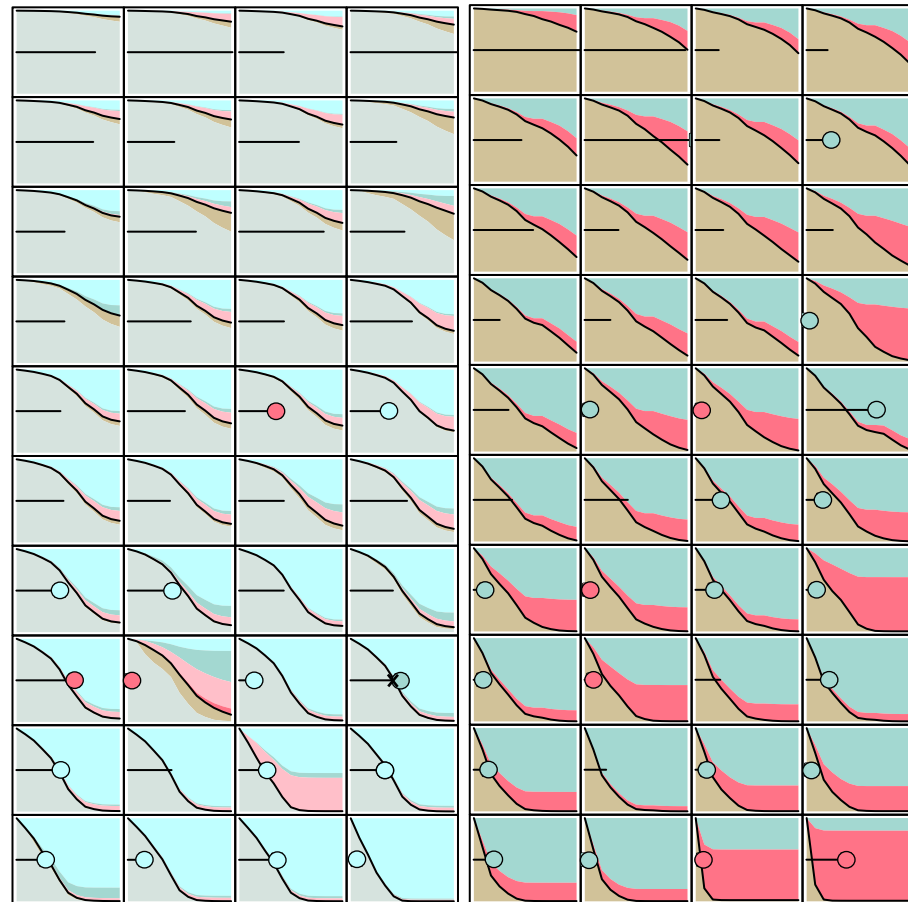
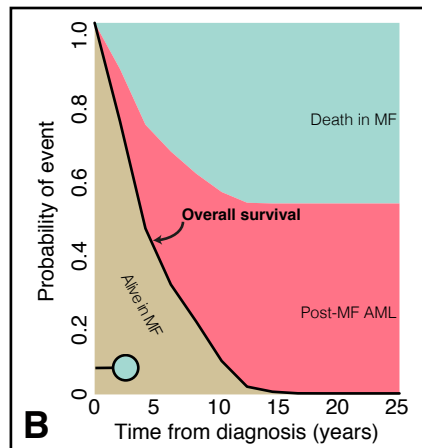
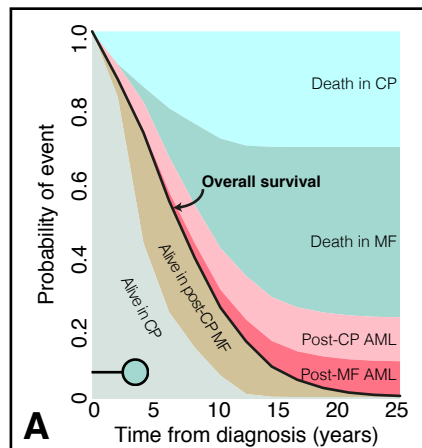
**FIGURE 5**

**C. Outcome in Chronic Phase (CP)**

**D. Outcome in Myelofibrosis (MF)**

Best predicted EFS →

Best predicted EFS →



→ Worst predicted EFS

→ Worst predicted EFS

