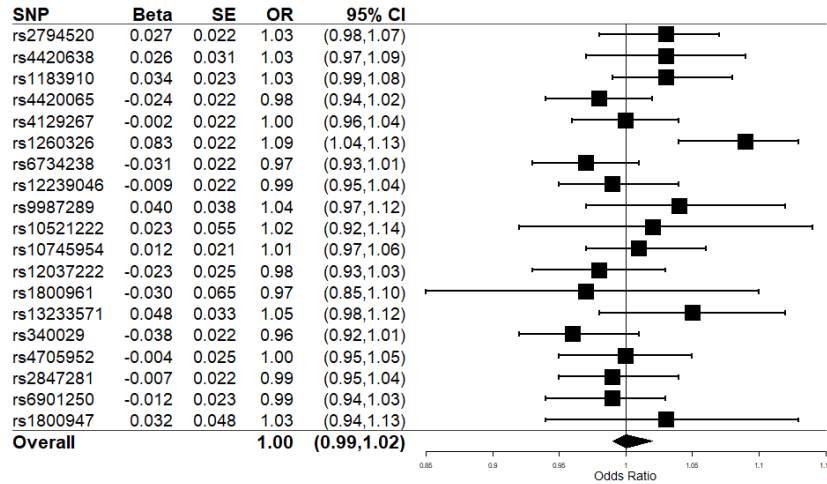
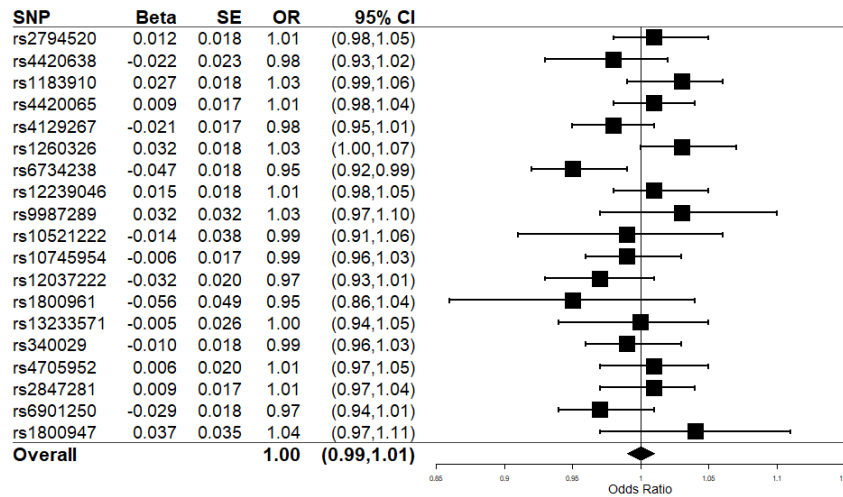


Figure 1 Associations between 19 SNPs and colorectal cancer risk.

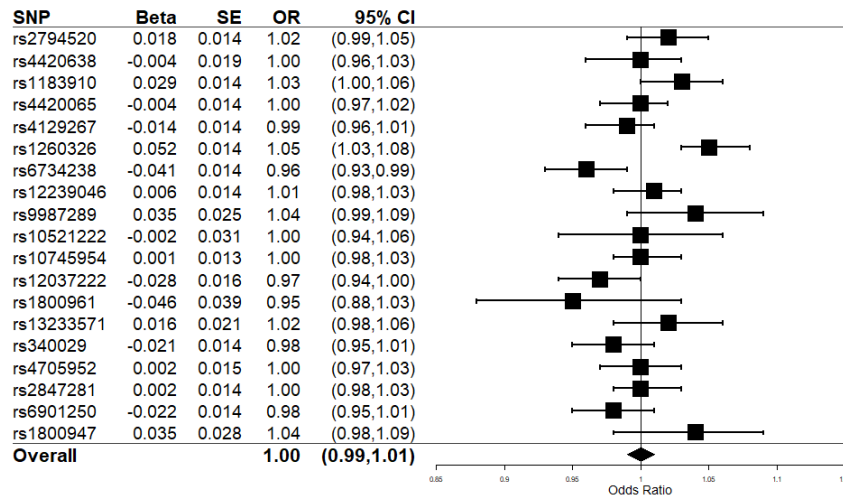
A) SNP-CRC association in GECCO



B) SNP-CRC association in CORECT

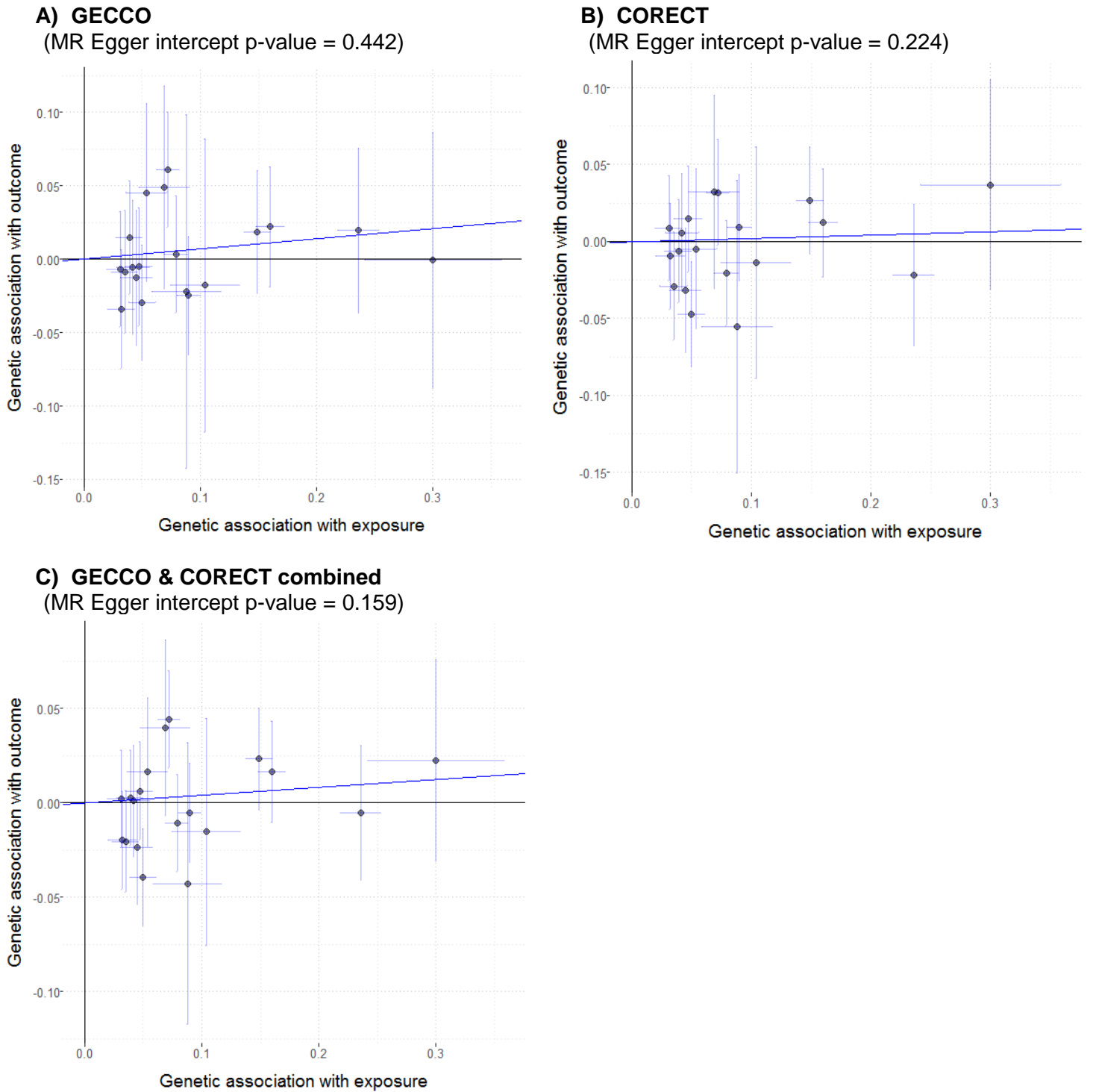


C) SNP-CRC association in GECCO & CORECT combined



■ Odds ratios are the estimated associations between SNPs (per risk allele increase) and CRC risk.
 ─ 95% confidence intervals of corresponding odds ratios.

Figure 2 Scatter plots of SNP-CRP and SNP-CRC associations for 19 SNPs.



● SNPs with 95% confidence intervals corresponding to the effects on CRP concentrations (horizontal lines) and CRC risk (vertical lines).