

1 **REVISION 2**

2 **Morin-type transition in 5C pyrrhotite**

3 C R S Haines^{1*}, G I Lampronti¹, W T Klooster², S J Coles², S E Dutton³, and M A Carpenter¹

4 *¹Department of Earth Sciences, University of Cambridge, Cambridge, UK*

5 *²UK National Crystallographic Service, Chemistry, Faculty of*

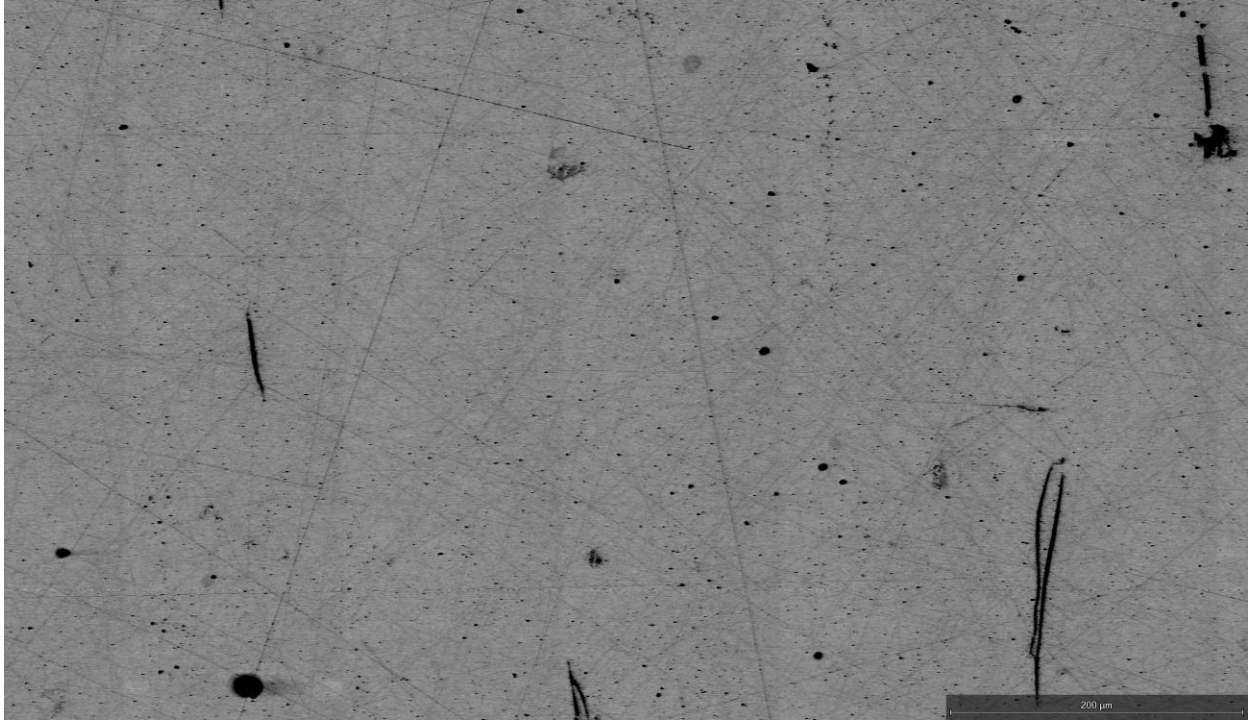
6 *Natural and Environmental Sciences,*

7 *University of Southampton, SO17 1BJ, UK*

8 *³Department of Physics, University of Cambridge, Cambridge, UK*

9
10 **Supplemental Information**

11
12 In order to address any concerns over the homogeneity of the chemical composition of
13 the transformed 5C pyrrhotite samples we present in the supplementary information a SEM-
14 BSE (Fig. S1) map of the surface of the larger (mass ~ 9.2mg) crystal. There is no discernible
15 zoning or inhomogeneity.
16



17

18 Figure S1. SEM-BSE map of most of the surface of the larger (mass ~ 9.2 mg) sample of
19 5C pyrrhotite. The contrast has been set so high that the stitching and polishing marks are
20 clearly visible. There are some impurities on the surface and some very tiny possible
21 inclusions. There is no evidence of zoning or of inhomogeneity in the chemical composition of
22 the sample. BSE images were collected on an FEI Quanta 650FEG SEM (acceleration voltage
23 5 kV, beam spot size 4.5, working distance 13 mm).

24

25