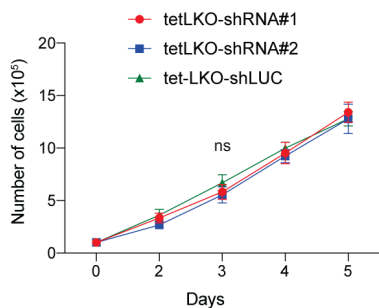
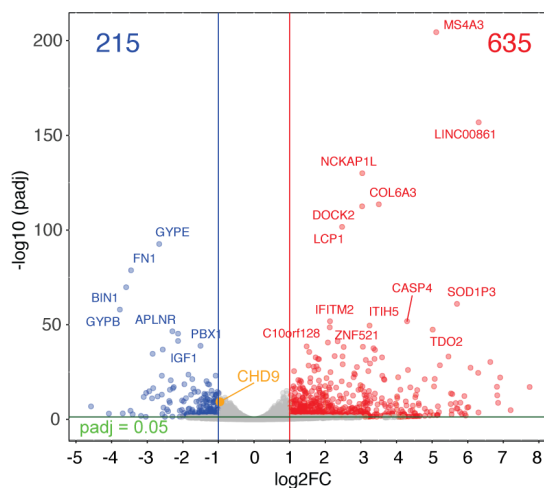
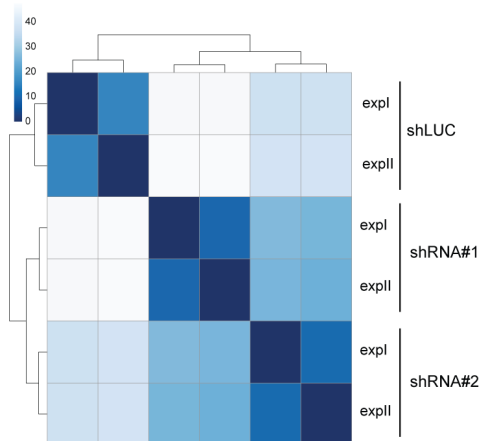


A.

K562



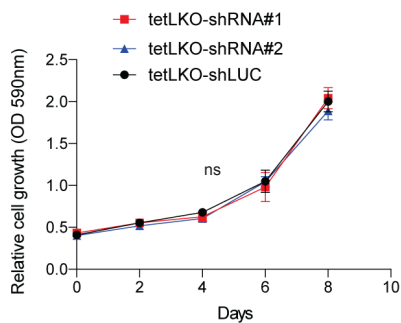
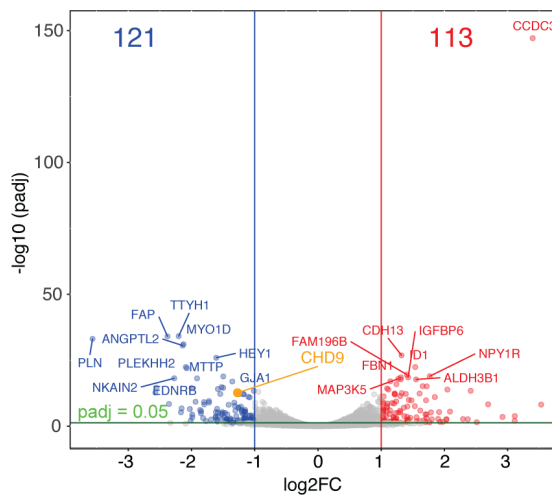
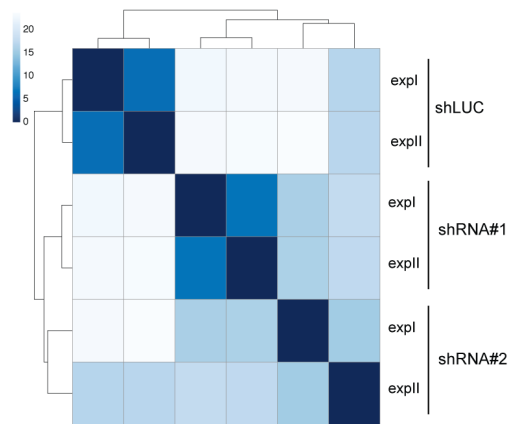
tet-LKO  
shRNA  
infected cells

+DOX  
2 days

100,000 cells  
seeded in a 6-well plate  
for proliferation assay  
( $t=0$ )

B.

SNB19



tet-LKO  
shRNA  
infected cells

+DOX  
2 days

25,000 cells  
seeded in a 6-well plate  
for proliferation assay  
( $t=0$ )