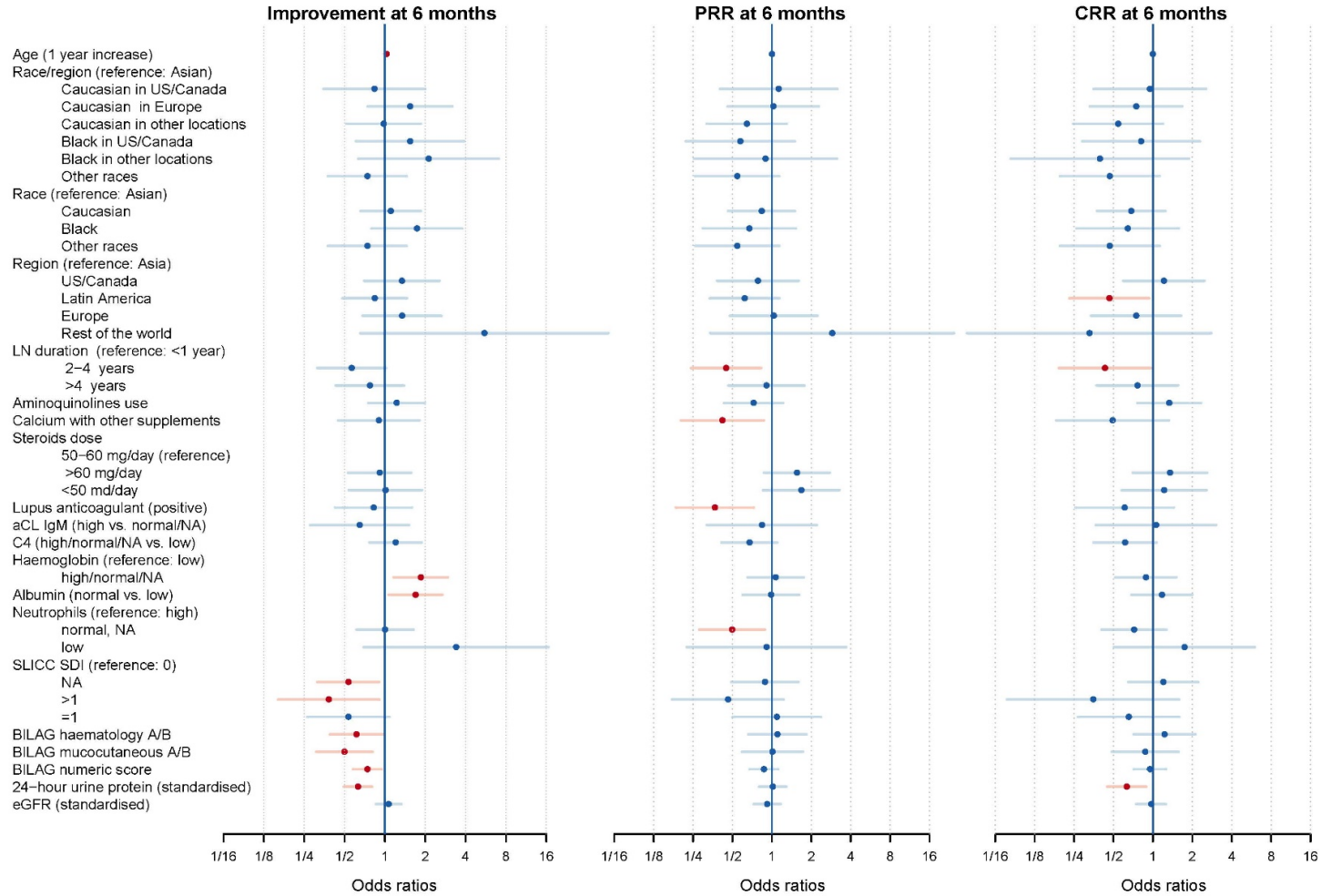


Figure 1. Univariate analysis of Improvement, Partial Renal Response (PRR) and Complete Renal Response (CRR) at 6 months.



Red circles/bars represent odds ratios and 95% confidence intervals (CI) of statistically significant predictors (P<0.05) for PRR and CRR, and blue circles/bars represent odds ratios and 95% confidence intervals (CI) of non-significant predictors for PRR and CRR. LN, lupus nephritis; aCL, anticardiolipin.