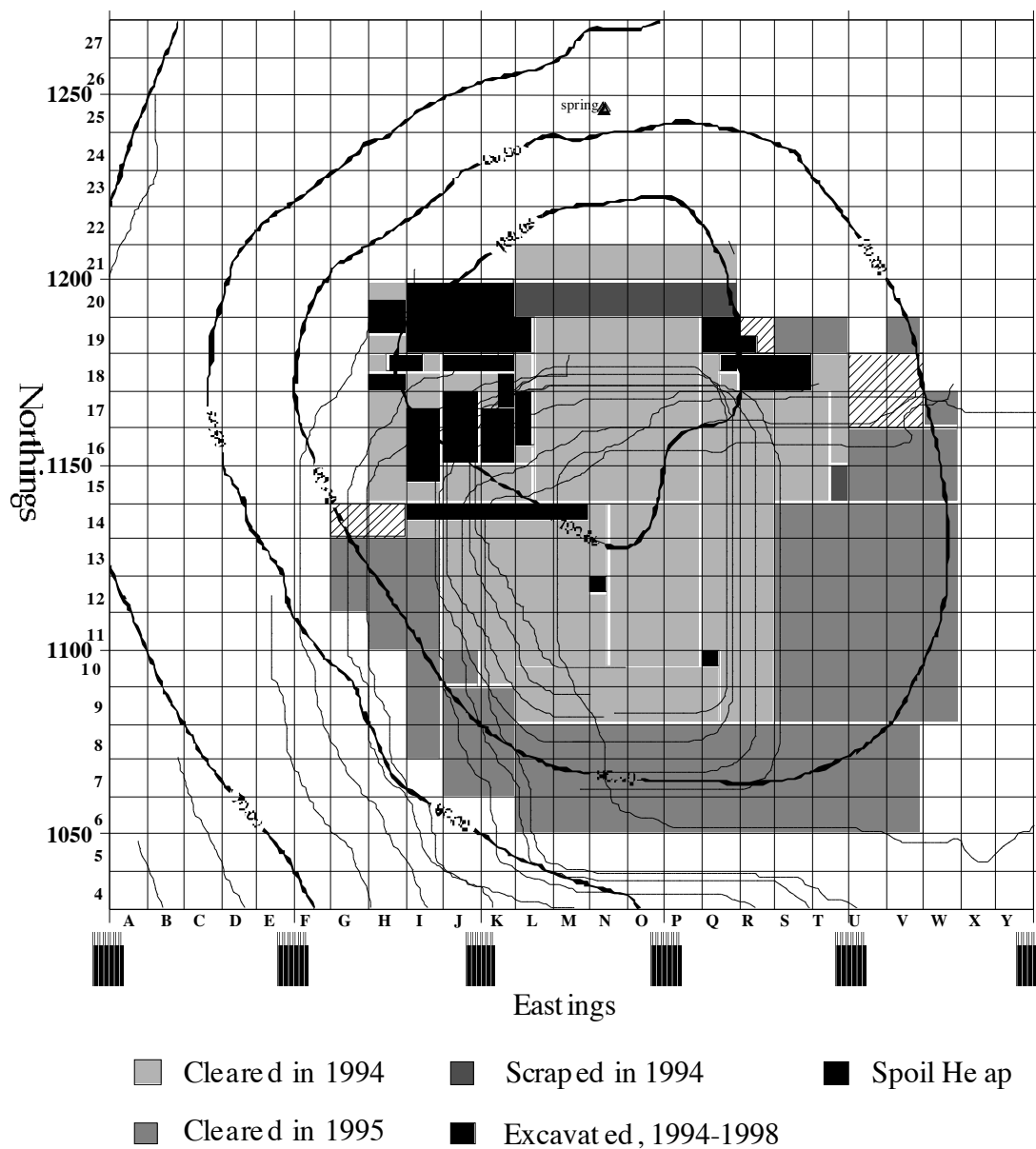


Kilise Tepe Surface distribution plots



B1:1 - Kilise Tepe: areas worked 1994-1998. 10 m squares.

Kilise Tepe Surface distribution plots



Mark

100m

B1:2 - Surface Marks



100m

B1:3 - Surface distribution: architectural fragments

Kilise Tepe Surface distribution plots



100m

B1:4 - Surface distribution: decorated sherds



100m

B1:5 - Surface distribution: Early Bronze Age sherds

Kilise Tepe Surface distribution plots



100m

B1:6 - Surface distribution: feature (non-body) sherds



100m

B1:7 - Surface distribution: Hellenistic sherds

Kilise Tepe Surface distribution plots



100m

B1:8 - Surface distribution: Iron Age sherds



100m

B1:9 - Surface distribution: informative sherds

Kilise Tepe Surface distribution plots



100m

B1:10 - Surface distribution: large stones



100m

B1:11 - Surface distribution: total number of sherds (to the nearest 50)

Kilise Tepe Surface distribution plots



100m

B1:12 Surface distribution: percentage of informative sherds



100m

B1:13 - Surface distribution: red Hittite wares

Kilise Tepe Surface distribution plots



100m

B1:14 - Surface distribution: Roman / Byzantine sherds



100m

B1:15 - Surface distribution: small stones



Kilise Tepe Surface distribution plots



100m

B1:16 - Surface distribution: stone artefacts



100m

B1:17 - Surface distribution: Terra sigillata sherds

Kilise Tepe Surface distribution plots



100m

B1:18 - Surface distribution: tile fragments



100m

B1:19 - Surface distribution: percentage of datable sherds

Kilise Tepe Surface distribution plots



100m

B1:20 - Surface distribution: trefoil rim sherds