

Figure S1. Annotated chromosomal regions with studied sORFs.

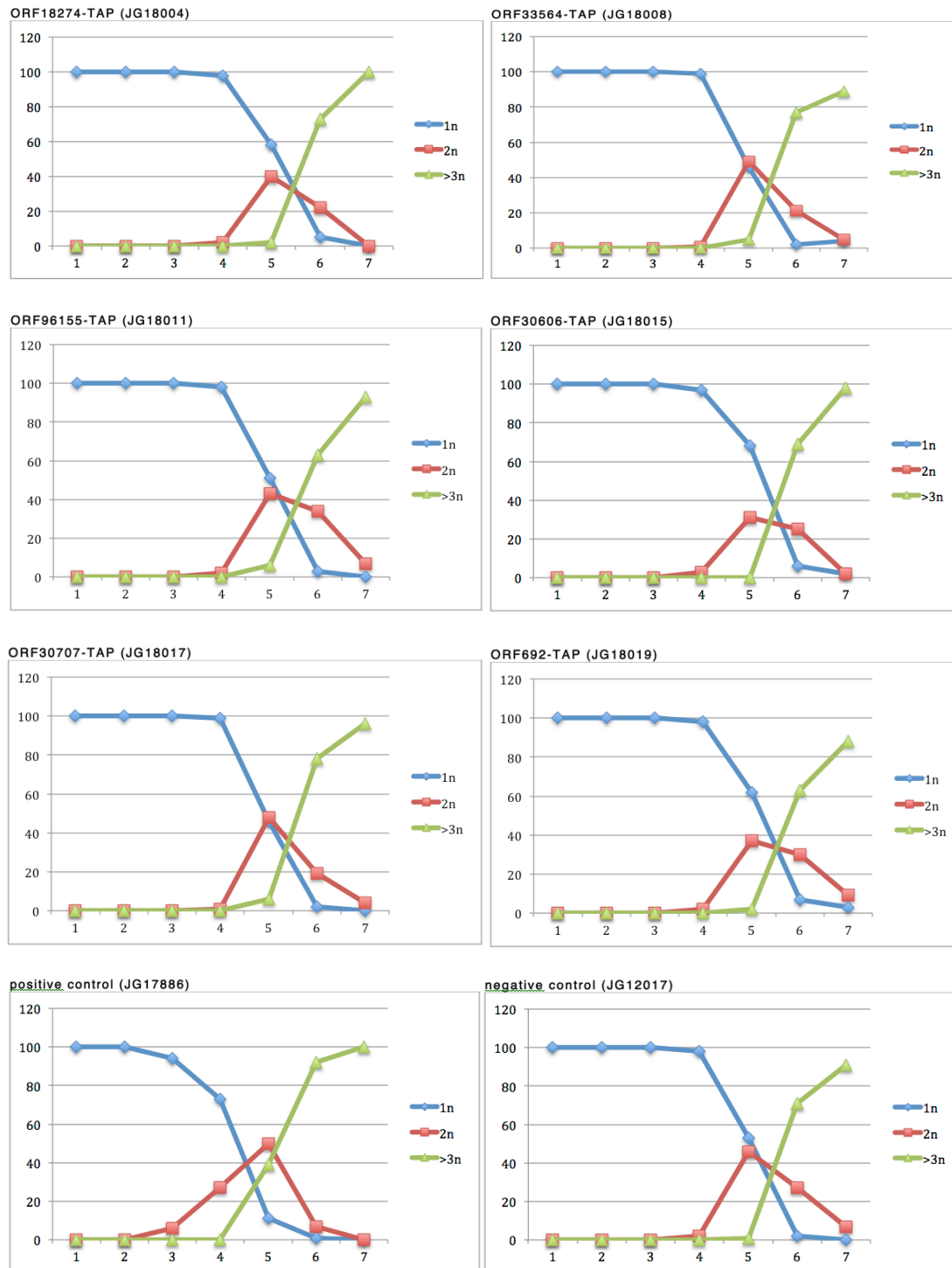


Figure S2. Progression of *pat1-114* cells expressing indicated TAP-tagged proteins into meiosis.

pat1-114 cells expressing indicated TAP-tagged proteins were arrested by nitrogen starvation and released into meiosis at 34°C. Fixed cells were stained with DAPI and nuclei were counted in 100 cells per time point. Shown are the fractions of cells that contained one nucleus (1n), two nuclei (2n) or more than two nuclei (3n or more) at the indicated time points after meiosis induction (hours). The progression of meiosis in all tested mutant strains was similar to that in wild-type cells.

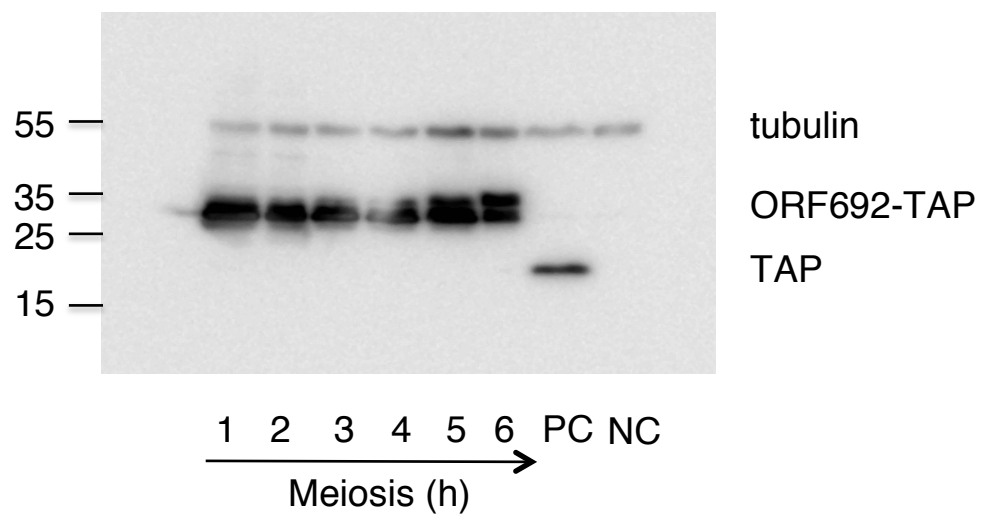


Figure S3. Western blot analysis of ORF692-TAP.

Protein extracts were prepared and analyzed by Western blotting as described in Figure 2B.