

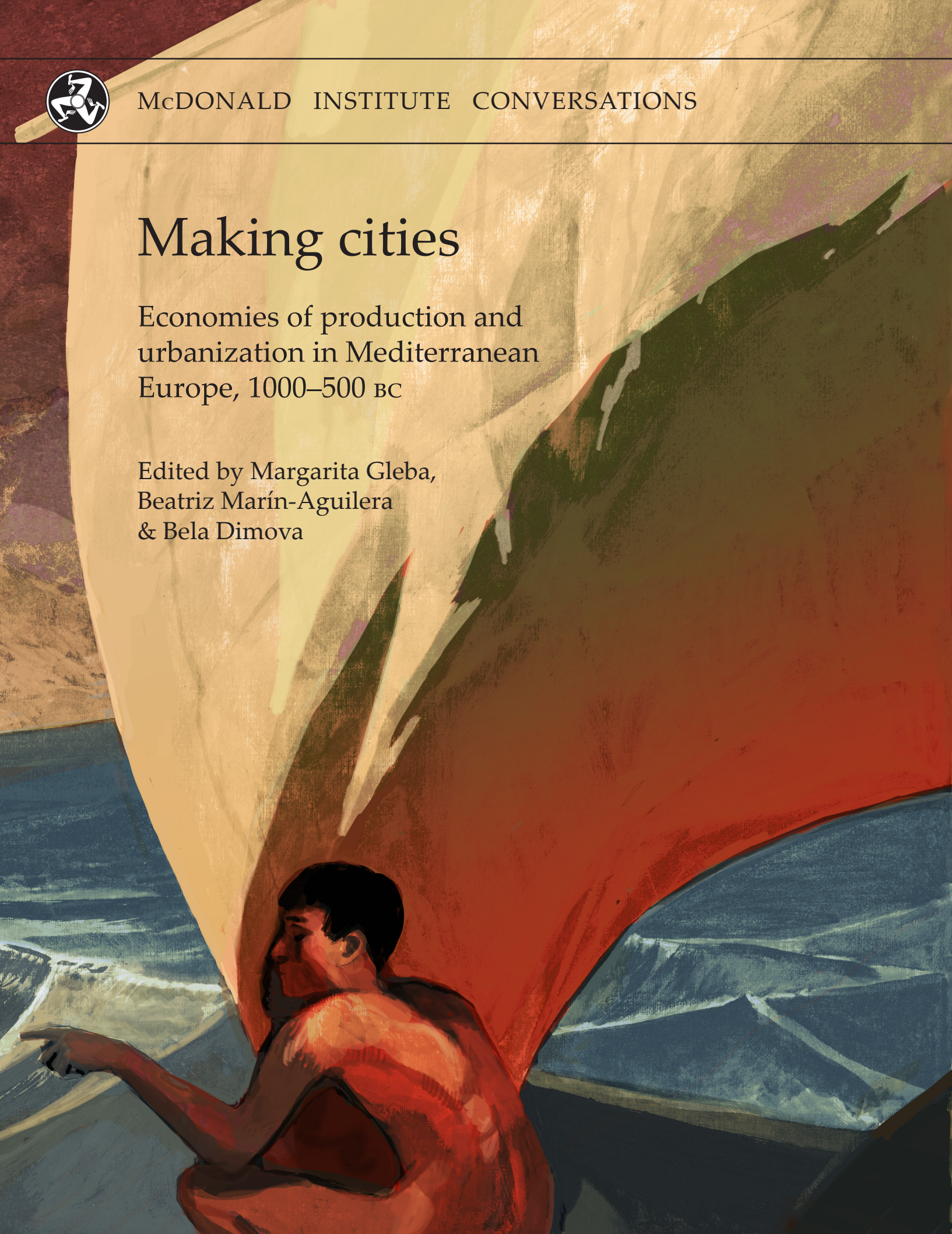


McDONALD INSTITUTE CONVERSATIONS

Making cities

Economies of production and
urbanization in Mediterranean
Europe, 1000–500 BC

Edited by Margarita Gleba,
Beatriz Marín-Aguilera
& Bela Dimova



Making cities



McDONALD INSTITUTE CONVERSATIONS

Making cities

Economies of production and urbanization in Mediterranean Europe, 1000–500 BC

Edited by Margarita Gleba,
Beatriz Marín-Aguilera & Bela Dimova

with contributions from

David Alensio, Laura Álvarez, Giovanna Bagnasco Gianni, William Balco,
Lesley Beaumont, Jeffrey Becker, Zisis Bonias, Simona Carosi, Letizia
Ceccarelli, Manuel Fernández-Götz, Eric Gailledrat, Giovanna Gambacurta,
David Garcia i Rubert, Karina Grömer, Javier Jiménez Ávila, Rafel Journet,
Michael Kolb, Antonis Kotsonas, Emanuele Madrigali, Matilde Marzullo,
Francesco Meo, Paolo Michelini, Albert Nijboer, Robin Osborne, Phil
Perkins, Jacques Perreault, Claudia Piazzzi, Karl Reber, Carlo Regoli,
Corinna Riva, Andrea Roppa, Marisa Ruiz-Gálvez, Joan Sanmartí Grego,
Christopher Smith, Simon Stoddart, Despoina Tsiafaki, Anthony Tuck,
Ioulia Tzonou, Massimo Vidale & Jaime Vives-Ferrándiz Sanchez

Published by:

McDonald Institute for Archaeological Research
University of Cambridge
Downing Street
Cambridge, UK
CB2 3ER
(0)(1223) 339327
eaj31@cam.ac.uk
www.mcdonald.cam.ac.uk



McDonald Institute for Archaeological Research, 2021

© 2021 McDonald Institute for Archaeological Research.
Making cities is made available under a Creative Commons
Attribution-NonCommercial-NoDerivatives 4.0 (International)
Licence: <https://creativecommons.org/licenses/by-nc-nd/4.0/>

ISBN: 978-1-913344-06-1

On the cover: *Urbanization of Mediterranean Europe powered by sails*, by Kelvin Wilson.

Cover design by Dora Kemp and Ben Plumridge.
Typesetting and layout by Ben Plumridge.

Edited for the Institute by Cyprian Broodbank (*Acting Series Editor*).

CONTENTS

Contributors	ix
Figures	xiii
Tables	xvii
<i>Chapter 1</i> Making cities: economies of production and urbanization in Mediterranean Europe, 1000–500 BC	1
BELA DIMOVA, MARGARITA GLEBA & BEATRIZ MARÍN-AGUILERA	
Definitions of urbanism	2
Urbanism and textiles	2
Contributions to this volume	3
Cover illustration	4
Part I Eastern Mediterranean	
<i>Chapter 2</i> Argilos: the booming economy of a silent city	9
JACQUES PERREAULT & ZISIS BONIAS	
<i>Chapter 3</i> Regional economies and productions in the Thermaic Gulf area	21
DESPOINA TSIAFAKI	
Thermaic Gulf economies and production	22
Ancient Therme and its harbour	26
Conclusion	34
<i>Chapter 4</i> Production activities and consumption of textiles in Early Iron Age Eretria	39
KARL REBER	
Eretria in the Early Iron Age	39
Eretria's economic situation	41
The production and consumption of textiles	41
Conclusion	45
<i>Chapter 5</i> Productive economy and society at Zagora	47
LESLEY A. BEAUMONT	
<i>Chapter 6</i> Making Cretan cities: urbanization, demography and economies of production in the Early Iron Age and the Archaic period	57
ANTONIS KOTSONAS	
Urbanization	58
Demography	66
Economies of production	69
Conclusion	71
<i>Chapter 7</i> Production, urbanization, and the rise of Athens in the Archaic period	77
ROBIN OSBORNE	
<i>Chapter 8</i> Making Corinth, 800–500 BC: production and consumption in Archaic Corinth	89
IOULIA TZONOU	
Eighth century, to the end of the Geometric period and the transition into the Early Protocorinthian, 720 BC	95
Seventh century, the Protocorinthian and Transitional period into Early Corinthian, 720–620 BC	97
Sixth century, the Corinthian period, 620–500 BC	98
Conclusion	100

Part II	Central Mediterranean	
Chapter 9	Making cities in Veneto between the tenth and the sixth century BC	107
	GIOVANNA GAMBACURTA	
	Urbanization criteria	107
	Landscape and population	109
	Settlements	110
	Necropoleis	111
	Borders and shrines	112
	Inscriptions	114
	Myths	115
	Conclusion	116
Chapter 10	Attached versus independent craft production in the formation of the early city-state of Padova (northeastern Italy, first millennium BC)	123
	MASSIMO VIDALE & PAOLO MICHELINI	
	Materials and methods	124
	General patterns of industrial location	126
	Methodological issues	128
	The craft industries through time	130
	New craft locations: size and size variations through time	131
	Duration of urban craft workshops	132
	Ceramic, copper and iron processing sites: size versus duration of activities	133
	Discussion	134
	A historical reconstruction	138
	Onset of proto-currency and the issue of remuneration	141
	Conclusion	142
Chapter 11	Resource and ritual: manufacturing and production at Poggio Civitate	147
	ANTHONY TUCK	
Chapter 12	Perugia: the frontier city	161
	LETIZIA CECCARELLI & SIMON STODDART	
	Geology and culture	161
	History of research	163
	The emerging city from the rural landscape	165
	The topographical development of the city	166
	The city and its hinterland	168
	The rural settlements associated with the city	169
	Conclusion	172
Chapter 13	Tarquinia: themes of urbanization on the Civita and the Monterozzi Plateaus	177
	GIOVANNA BAGNASCO GIANNI, MATILDE MARZULLO & CLAUDIA PIAZZI	
	Approaching themes of urbanization at Tarquinia	177
	On the positioning of the protostoric site of Calvario and its road links	178
	The Calvario village on the Monterozzi Plateau and its economic activities during the eighth century BC	180
	The process of urbanization based on the evidence for the fortifications	185
	The limits of Tarquinia before its fortification, a theoretical approach	188
Chapter 14	Prolegomena to the material culture of Vulci during the Orientalizing period in the light of new discoveries	195
	SIMONA CAROSI & CARLO REGOLI	
	New data from Poggio Mengarelli Necropolis	195
	Conclusion	202

<i>Chapter 15</i>	Defining space, making the city: urbanism in Archaic Rome	205
	JEFFREY A. BECKER	
	Making civic space – the <i>Forum Romanum</i> and its environs	206
	Monumentality	210
	Peri-urban evidence	211
	Discussion	214
<i>Chapter 16</i>	Commodities, the instability of the gift, and the codification of cultural encounters in Archaic southern Etruria	219
	CORINNA RIVA	
	Agricultural surplus and a new funerary ideology	220
	Oversize vessels and fixing the gift	221
	Codification in the encounter	222
	Conclusion	226
<i>Chapter 17</i>	The Etruscan <i>pithos</i> revolution	231
	PHIL PERKINS	
	The <i>pithos</i> as artefact	232
	Making <i>pithoi</i>	236
	Using <i>pithoi</i>	240
	Socio-economic agency of <i>pithoi</i>	243
	<i>Pithoi</i> , economic development, and inequality	245
	<i>Pithoi</i> , economic growth and cities	248
	Conclusion	250
<i>Chapter 18</i>	Birth and transformation of a Messapian settlement from the Iron Age to the Classical period: Muro Leccese	259
	FRANCESCO MEO	
	The Iron Age village	259
	The Archaic and Classical settlement	266
	The Hellenistic period and the end of the town	276
<i>Chapter 19</i>	Indigenous urbanism in Iron Age western Sicily	281
	MICHAEL J. KOLB & WILLIAM M. BALCO	
	Settlement layout	282
	Demographic changes	286
	Production, consumption and exchange	288
	Ritual and cultic activity	290
	Conclusion	291
Part III	Western Mediterranean	
<i>Chapter 20</i>	Colonial production and urbanization in Iron Age to early Punic Sardinia (eighth–fifth century BC)	299
	ANDREA ROPPA & EMANUELE MADRIGALI	
	Colonial production and <i>amphora</i> distribution in Iron Age Sardinia	299
	Case studies: Nora and S’Urachi	301
	Discussion	305
	Colonial economies and urbanization	309
<i>Chapter 21</i>	Entanglements and the elusive transfer of technological know-how, 1000–700 BC: elite prerogatives and migratory swallows in the western Mediterranean	313
	ALBERT J. NIJBOER	
	Movement of peoples and goods	314
	Iron	316
	The alphabet	319
	Early monumental architecture	321
	Discussion and epilogue	323

<i>Chapter 22</i>	Making cities, producing textiles: the Late Hallstatt <i>Fürstensitze</i>	329
	MANUEL FERNÁNDEZ-GÖTZ & KARINA GRÖMER	
	Monumentality, production and consumption: the settlement evidence	330
	Textile use and display in funerary contexts	336
	Conclusion	340
<i>Chapter 23</i>	From household to cities: habitats and societies in southern France during the Early Iron Age	345
	ÉRIC GAILLED RAT	
	A question of time	346
	A contrasted image	347
	From one Mediterranean to another	348
	The evanescent settlement	349
	The emergence of the fortified group settlement	351
	The <i>oppida</i> of the sixth–fifth centuries BC	354
	The house in the context of the group settlement	358
	Craftspeople, crafts and workshops	361
	Conclusion	363
<i>Chapter 24</i>	Urbanization and early state formation: elite control over manufacture in Iberia (seventh to third century BC)	367
	JOAN SANMARTÍ, DAVID ASENSIO & RAFEL JORNET	
	The historical process	367
	Craft in its social context	369
	Conclusion	380
<i>Chapter 25</i>	Productive power during the Early Iron Age (c. 650–575 BC) at the Sant Jaume Complex (Alcanar, Catalonia, Spain)	385
	LAURA ÁLVAREZ, MARIONA ARNÓ, JORGE A. BOTERO, LAIA FONT, DAVID GARCIA I RUBERT, MARTA MATEU, MARGARITA RODÉS, MARIA TORTRAS, CARME SAORIN & ANA SERRANO	
	The Sant Jaume Complex	385
	Production in the Sant Jaume Complex chiefdom	388
	Conclusion	392
<i>Chapter 26</i>	Not all that glitters is gold: urbanism and craftspeople in non-class or non-state run societies	395
	MARISA RUIZ-GÁLVEZ	
	Craftspeople and workshops in Iberia	395
	Workshops in Iberia	398
	The Iberians as a House Society	400
	Conclusion	404
<i>Chapter 27</i>	Urbanization and social change in southeast Iberia during the Early Iron Age	409
	JAIME VIVES-FERRÁNDIZ SÁNCHEZ	
	Iberian urbanization: connectivity and dispersed territories	409
	Local economies into broader networks	411
	Agricultural intensification	412
	Urbanization, institutions and political authority	415
	Conclusion	420
<i>Chapter 28</i>	‘Building palaces in Spain’: rural economy and cities in post-Orientalizing Extremadura	425
	JAVIER JIMÉNEZ ÁVILA	
	Cancho Roano as a phenomenon	429
	The ‘post-Orientalizing’ world	432
	Post-Orientalizing economies	432
	Countryside and cities	438
	Final remarks	440
Part IV	Conclusion	
<i>Chapter 29</i>	Craft and the urban community: industriousness and socio-economic development	447
	CHRISTOPHER SMITH	

CONTRIBUTORS

DAVID ALENSIO

Departament de Prehistòria, Història Antiga i Arqueologia, Universitat de Barcelona, C/ Montalegre 6-8, 08001 Barcelona, Spain
Email: davidasensio@ub.edu

LAURA ÁLVAREZ ESTAPÉ

Independent scholar
Email: laura.alvarezestape@gmail.com

GIOVANNA BAGNASCO GIANNI

Dipartimento di Beni Culturali e Ambientali, Università degli Studi di Milano, via Festa del Perdono 7, 20122 Milano, Italy
Email: giovanna.bagnasco@unimi.it

WILLIAM BALCO

Department of History, Anthropology, and Philosophy, University of North Georgia, Barnes Hall 327, Dahlonega, GA 30597, USA
Email: william.balco@ung.edu

LESLEY BEAUMONT

Department of Archaeology, Faculty of Arts & Social Sciences, The University of Sydney, A18, Sydney, NSW 2006, Australia
Email: lesley.beaumont@sydney.edu.au

JEFFREY BECKER

Department of Middle Eastern and Ancient Mediterranean Studies, Binghamton University – State University of New York, 4400 Vestal Parkway East, PO Box 6000, Binghamton, NY 13902-6000, USA
Email: beckerj@binghamton.edu

ZISIS BONIAS

Ephorate of Antiquities of Kavala-Thasos, Erythrou Stavrou 17, Kavala 65110, Greece
Email: zbonias@yahoo.gr

SIMONA CAROSI

Soprintendenza Archeologia Belle Arti e Paesaggio per l'area metropolitana di Roma, la provincia di Viterbo e l'Etruria meridionale, Palazzo Patrizi Clementi, via Cavalletti n.2, 00186 Roma, Italy
Email: simona.carosi@beniculturali.it

LETIZIA CECCARELLI

Department of Chemistry, Materials and Chemical Engineering 'G.Natta', Politecnico di Milano, Piazza Leonardo da Vinci 32, 20133 Milano, Italy
Email: letizia.ceccarelli@polimi.it

BELA DIMOVA

British School at Athens, Souidias 52, Athens 10676, Greece
Email: bela.dimova@bsa.ac.uk

MANUEL FERNÁNDEZ-GÖTZ

School of History, Classics and Archaeology, University of Edinburgh, William Robertson Wing, Old Medical School, Teviot Place, Edinburgh, EH8 9AG, UK
Email: M.Fernandez-Gotz@ed.ac.uk

ERIC GAILLED RAT

CNRS, Archéologie des Sociétés Méditerranéennes, UMR 5140, Université Paul Valéry-Montpellier 3, F-34199, Montpellier cedex 5, France
Email: eric.gailledrat@cnrs.fr

GIOVANNA GAMBACURTA

Dipartimento di Studi Umanistici, Università Ca' Foscari Venezia, Palazzo Malcanton Marcorà, Dorsoduro 3484/D, 30123 Venezia, Italy
Email: giovanna.gambacurta@unive.it

DAVID GARCIA I RUBERT

Departament de Prehistòria, Història Antiga i Arqueologia, Universitat de Barcelona, Carrer Montalegre 6, 08001 Barcelona, Spain
Email: dgarcia@ub.edu

MARGARITA GLEBA

Dipartimento dei Beni Culturali, Università degli Studi di Padova, Piazza Capitaniato 7, Palazzo Liviano, 35139 Padova, Italy
Email: margarita.gleba@unipd.it

KARINA GRÖMER

Natural History Museum Vienna, Department of Prehistory, Burgring 7, 1010 Vienna, Austria
Email: karina.groemer@nhm-wien.ac.at

JAVIER JIMÉNEZ ÁVILA

Consejería de Cultura, Turismo y Deporte – Junta de Extremadura, Edificio Tercer Milenio, Módulo 4, Avda. de Valhondo s/n, 06800 Mérida, Spain
Email: jjimavila@hotmail.com

RAFEL JOURNET

Departament de Prehistòria, Història Antiga i Arqueologia, Universitat de Barcelona, C/ Montalegre 6-8, 08001 Barcelona, Spain
Email: rafeljornet@ub.edu

MICHAEL KOLB

Department of Sociology and Anthropology, Metropolitan State University of Denver, Campus Box 19, P.O. Box 173362, Denver, CO 80217-3362, USA
Email: mkolb5@msudenver.edu

ANTONIS KOTSONAS

Institute for the Study of the Ancient World, New York University, 15 East 84th St., New York, NY 10028, USA
Email: ak7509@nyu.edu

EMANUELE MADRIGALI

Independent scholar
Email: e.madrigali@gmail.com

BEATRIZ MARÍN-AGUILERA

McDonald Institute for Archaeological Research, University of Cambridge, Downing Street, Cambridge CB2 3DZ, UK
Email: bm499@cam.ac.uk

MATILDE MARZULLO

Coordinating Research Centre 'Tarquinia Project', Dipartimento di Beni Culturali e Ambientali, Università degli Studi di Milano, via Festa del Perdono 7, 20122 Milano, Italy
Email: matilde.marzullo@unimi.it

FRANCESCO MEO

Dipartimento di Beni Culturali, Università del Salento, Via D. Birago, 64, 73100 Lecce, Italy
Email: francesco.meo@unisalento.it

PAOLO MICHELINI

P.ET.R.A., Società Cooperativa ARL, Via Matera, 7 a/b, 35143 Padova, Italy
Email: paolo.mik@libero.it

ALBERT NIJBOER

Groningen Institute of Archaeology, Poststraat 6, 9712 ER Groningen, The Netherlands
Email: a.j.nijboer@rug.nl

ROBIN OSBORNE

University of Cambridge, Faculty of Classics, Sidgwick Avenue, Cambridge CB3 9DA, UK
Email: ro225@cam.ac.uk

PHIL PERKINS

Classical Studies, School of Arts & Humanities, The Open University, Perry C Second Floor, 25, Walton Hall, Milton Keynes MK7 6AA, UK
Email: Phil.Perkins@open.ac.uk

JACQUES PERREAULT

Université de Montréal C.P. 6128, Succursale Centre-Ville Montréal, QC, H3C 3J7, Canada
Email: jacques.y.perreault@umontreal.ca

CLAUDIA PIAZZI

Coordinating Research Centre 'Tarquinia Project', Dipartimento di Beni Culturali e Ambientali, Università degli Studi di Milano, via Festa del Perdono 7, 20122 Milano, Italy
Email: claudia.piazz2@gmail.com

KARL REBER

Université de Lausanne, Anthropolé 4011, 1015 Lausanne, Switzerland
Email: karl.reber@unil.ch

CARLO REGOLI

Fondazione Vulci, Parco Naturalistico Archeologico di Vulci, 01014 Montalto di Castro (Viterbo), Italy
Email: caregoli@gmail.com

CORINNA RIVA

Institute of Archaeology, University College London, 31–34 Gordon Square, London WC1H 0PY, UK
Email: c.riva@ucl.ac.uk

ANDREA ROPPA

Independent scholar
Email: roppaandrea@gmail.com

MARISA RUIZ-GÁLVEZ

Departamento de Prehistoria, Historia Antigua y Arqueología, Universidad Complutense de Madrid, Edificio B C/ Profesor Aranguren, s/n Ciudad Universitaria, 28040 Madrid, Spain
Email: marisar.gp@ghis.ucm.es

JOAN SANMARTÍ GREGO

Departament de Prehistòria, Història Antiga i
Arqueologia, Universitat de Barcelona, Carrer
Montalegre 6, 08001 Barcelona, Spain
Email: sanmarti@ub.edu

CHRISTOPHER SMITH

School of Classics, University of St Andrews, Fife
KY16 9AL, UK
Email: cjs6@st-and.ac.uk

SIMON STODDART

Department of Archaeology, University of
Cambridge, Downing Street, Cambridge
CB2 3DZ, UK
Email: ss16@cam.ac.uk

DESPOINA TSIAFAKI

Culture & Creative Industries Department, 'Athena':
Research & Innovation Center in Information,
Communication & Knowledge Technologies.
Building of 'Athena' R.C., University Campus of
Kimmeria, P.O. Box 159, Xanthi 67100, Greece
Email: tsiafaki@ipet.gr

ANTHONY TUCK

Department of Classics, University of Massachusetts
Amherst, 524 Herter Hall, 161 Presidents Drive
Amherst, MA 01003, USA
Email: atuck@classics.umass.edu

IOULIA TZONOU

Corinth Excavations, American School of Classical
Studies at Athens, Ancient Corinth 20007, Greece
Email: itzonou.corinth@ascsa.edu.gr

MASSIMO VIDALE

Dipartimento dei Beni Culturali, Università degli
Studi di Padova, Piazza Capitaniato 7, Palazzo
Liviano, 35139 Padova, Italy
Email: massimo.vidale@unipd.it

JAIME VIVES-FERRÁNDIZ SANCHEZ

Museu de Prehistòria de València
Email: jaime.vivesferrandiz@dival.es

Figures

1.1	<i>Map indicating the volume coverage.</i>	4
2.1	<i>Argilos, aerial view.</i>	10
2.2	<i>Argilos, general plan.</i>	10
2.3	<i>Small furnace in building E.</i>	11
2.4	<i>View of building L.</i>	12
2.5	<i>Plan of Koutloudis area with buildings H, L, P, and Q.</i>	13
2.6	<i>Building L, press-bed in room 4.</i>	13
2.7	<i>Building Q, room 1.</i>	14
2.8	<i>Building L, room 11, crushed amphorae.</i>	16
2.9	<i>Dividing wall between L7–L8 with remains of clay over the lower courses of stone.</i>	17
2.10	<i>Building L, facades of L2–L3.</i>	18
3.1	<i>Thermaic Gulf region.</i>	22
3.2	<i>Iron sword, grave offering, Nea Philadelphia cemetery, late sixth century BC.</i>	24
3.3	<i>Miniature iron wagon, grave offering, Sindos cemetery, late sixth century BC.</i>	25
3.4	<i>Methone. Pottery kilns in Building A at Sector B.</i>	26
3.5	<i>Ancient settlement at Karabournaki, aerial view.</i>	27
3.6	<i>Ancient settlement at Karabournaki, storeroom with pithoi.</i>	28
3.7	<i>‘Eggshell’ type vases made at the pottery workshop at Karabournaki.</i>	29
3.8	<i>Karabournaki settlement metal workshop.</i>	30
3.9	<i>Weaving tools from the Karabournaki settlement.</i>	31
3.10	<i>Loom weight with stamp depicting a satyr, Karabournaki settlement.</i>	32
3.11	<i>Karabournaki: distribution of textile production tools within the excavated area.</i>	33
4.1	<i>Map of Geometric Eretria.</i>	40
4.2	<i>Plan of the Sanctuary of Apollo in the eighth century BC.</i>	40
4.3	<i>Spindle whorl with dedication, from the Sanctuary of Apollo.</i>	42
4.4	<i>Cruche à haut col C41 (tankard) from the Aire sacrificielle.</i>	42
4.5	<i>Cruche à haut col C37 (tankard) from the Aire sacrificielle.</i>	43
4.6	<i>Fragment of linen from Grave 10 in the Heroon Necropolis.</i>	44
4.7	<i>Close-ups of wool weft-faced textiles from the Heroon Necropolis.</i>	45
5.1	<i>View of Zagora promontory from the northeast.</i>	48
5.2	<i>Plan of Zagora.</i>	49
5.3	<i>Aerial view of Trench 11, partially excavated.</i>	52
6.1	<i>Map of Crete showing sites mentioned in the text.</i>	58
6.2	<i>Plan of Karphi.</i>	59
6.3	<i>Plan of the Knossos valley.</i>	62
6.4	<i>Plan of Prinias.</i>	64
6.5	<i>Plan of Azoria.</i>	65
6.6	<i>Knossos North Cemetery: maximum and minimum number of cremation urns over time.</i>	68
6.7	<i>Knossos North Cemetery: number of cremation urns per year.</i>	68
6.8	<i>Fortetsa Cemetery: number of burials over time.</i>	68
6.9	<i>Fortetsa Cemetery: number of burials per year.</i>	68
6.10	<i>Reconstruction of the pottery workshop at Mandra di Gipari, near Prinias.</i>	70
7.1	<i>Attica, 1050–900 BC.</i>	80
7.2	<i>Attica, 900–800 BC.</i>	80
7.3	<i>Attica, 800–700 BC.</i>	81
7.4	<i>Attica, 700–600 BC.</i>	81
7.5	<i>Attica, 600–500 BC.</i>	85
8.1	<i>Map of the northeast Peloponnese showing sites mentioned in the text.</i>	90
8.2	<i>Corinth: Geometric Period multiphase plan (900–720 BC).</i>	91
8.3	<i>Corinth: Protocorinthian to Transitional Period multiphase plan (720–620 BC).</i>	91
8.4	<i>Corinth: Corinthian Period multiphase plan (620–500 BC).</i>	92
8.5	<i>Corinth: fifth century BC multiphase plan.</i>	93

8.6	<i>Corinth: multiphase plan up to 400 BC.</i>	93
8.7	<i>Corinth: Forum, all periods.</i>	94
8.8	<i>South Stoa, Tavern of Aphrodite Foundry.</i>	99
8.9	<i>Late Corinthian kraters from the sixth-century BC floor.</i>	101
8.10	<i>The Arachne aryballos, Late Early Corinthian or Middle Corinthian (600 BC).</i>	102
9.1	<i>Maps of Veneto.</i>	108
9.2	<i>Maps of cities with different orientations: a) Oderzo; b) Padova.</i>	110
9.3	<i>Este, clay andirons with ram's heads.</i>	112
9.4	<i>Padova, funerary stone monuments: a) Camin; b) Albignasego.</i>	112
9.5	<i>Padova, via Tadi, boundary stone with Venetic inscription on two sides.</i>	114
9.6	<i>Padova, via C. Battisti, boundary stone with Venetic inscription on four sides.</i>	114
9.7	<i>Padova, via Tiepolo–via San Massimo 1991, Grave 159, bronze figured belt-hook.</i>	115
9.8	<i>Este, Casa di Ricovero, Grave 23/1993 or Nerka's grave.</i>	116
9.9	<i>Isola Vicentina, stele with Venetic inscription.</i>	117
10.1	<i>Location of Padova and the study area in northeastern Italy.</i>	124
10.2	<i>Padova, general cumulative map of the craft locations, c. 825–50 BC.</i>	125
10.3	<i>Padova, location of the craft areas and workshops in the early urban core.</i>	127
10.4	<i>Padova, the extra-urban location of craft industries in Roman times.</i>	129
10.5	<i>New manufacturing areas per different craft.</i>	131
10.6	<i>Maximum total area occupied by craft production sites.</i>	132
10.7	<i>New craft areas activated in each period.</i>	132
10.8	<i>Frequency distribution of dimensional class of craft areas per period.</i>	132
10.9	<i>Padova, Questura, site 2, northeast sector.</i>	133
10.10	<i>Workshop size and duration of activity.</i>	134
10.11	<i>Padova, Questura, site 2. Ceramic tuyère.</i>	136
10.12	<i>Padova, Questura, site 2. Cluster of fine feasting pottery.</i>	137
10.13	<i>Padova, Questura, site 2. Antler combs from the metallurgical workshop.</i>	137
10.14	<i>Sherds of Attic pottery from workshop areas in Padova.</i>	138
10.15	<i>Padova, Piazza Castello, site 3: vertical kiln and modular perforated grid.</i>	139
10.16	<i>Part of an elite grave's furnishings from Padova, end of the eighth century BC.</i>	140
10.17	<i>Vessels from the cemetery of Piovego, Padova, fifth century BC.</i>	141
11.1	<i>Map of central Italy.</i>	148
11.2	<i>Early Phase Orientalizing Complex Building 4 (c. 725–675 BC) reconstruction.</i>	148
11.3	<i>Orientalizing Complex (c. 675–600 BC) reconstruction.</i>	149
11.4	<i>Archaic Phase Structure (c. 600–530 BC) reconstruction.</i>	149
11.5	<i>Orientalizing Complex roofing elements.</i>	150
11.6	<i>Partially worked and complete bone, antler and ivory.</i>	150
11.7	<i>Unfired cover tiles with human footprints.</i>	151
11.8	<i>Distribution of variable sized spindle whorls.</i>	152
11.9	<i>Carbonized seeds from Orientalizing Complex Building 2/Workshop.</i>	153
11.10	<i>Fragment of statuette from Orientalizing Complex Building 2/Workshop.</i>	153
11.11	<i>Frieze plaque depicting banqueting scene, Archaic Phase Structure.</i>	155
11.12	<i>Elements of a banquet service from the Orientalizing Complex.</i>	155
11.13	<i>Compote with incised khi.</i>	156
11.14	<i>Map of Poggio Civitate and surrounding traces of settlements or other human activity.</i>	157
12.1	<i>Location of Perugia.</i>	162
12.2	<i>The immediate environs of Perugia with key sites.</i>	162
12.3	<i>The geological context of Perugia.</i>	163
12.4	<i>Plan of the city of Perugia.</i>	166
12.5	<i>Hierarchical relationship of Perugia to its territory.</i>	169
12.6	<i>Civitella d'Arna survey area.</i>	171
12.7	<i>Montelabate survey area.</i>	172
13.1	<i>Positioning of the structures of the Calvario.</i>	179
13.2	<i>Tarquinia and its territory around the middle of the eighth century BC.</i>	180

13.3	<i>Plan of the Villanovan village on the Monterozzi Plateau.</i>	181
13.4	<i>Plans of some of the Villanovan huts.</i>	183
13.5	<i>Finds from the huts.</i>	184
13.6	<i>Walls, gateways and roads of ancient Tarquinia.</i>	185
13.7	<i>Tarquinia, Bocchoris Tomb, lid.</i>	189
14.1	<i>Location of the excavation area at Vulci.</i>	196
14.2	<i>Aerial photograph of the excavation (2016–2018).</i>	197
14.3	<i>General plan of the excavation (2016–2018).</i>	197
14.4	<i>Textile fragment from the ‘Tomb of the Golden Scarab’.</i>	198
14.5	<i>Detail of the grave goods from Tomb 35 during excavation.</i>	199
14.6	<i>Tomb 29 during excavation.</i>	200
14.7	<i>Tomb 29: detail of the traces of cloth on the lid of the sheet bronze stamnos.</i>	201
14.8	<i>Tomb 72: a textile with colour pattern of small red and white checks.</i>	202
15.1	<i>Plan of Rome’s territory in the Archaic period.</i>	206
15.2	<i>Area of the Volcanal and the Comitium in the seventh and sixth centuries BC.</i>	207
15.3	<i>Reconstructed plan of Rome within the so-called ‘Servian Wall’.</i>	208
15.4	<i>Sketch plan of the area of the Forum Boarium and Velabrum in the seventh century BC.</i>	210
15.5	<i>Phase 1 of the so-called ‘Auditorium site’ villa.</i>	212
15.6	<i>Phase 2 of the so-called ‘Auditorium site’ villa.</i>	212
15.7	<i>The Republican ‘Villa delle Grotte’ at Grottarossa.</i>	213
16.1	<i>White-on-red pithos with lid, Cerveteri.</i>	223
16.2	<i>Figurative decoration of the Gobbi krater.</i>	224
16.3	<i>Black-figure amphora, Vulci, side A.</i>	226
16.4	<i>Black-figure amphora, Vulci, side B.</i>	226
17.1	<i>Pithos types 1–6.</i>	233
17.2	<i>Distribution map of Etruscan pithoi within the study area in Etruria.</i>	240
17.3	<i>Comparison between the altitude of pithos find spots and the range of altitude.</i>	241
17.4	<i>Map of sample area.</i>	242
17.5	<i>Distribution of architectural terracottas, pithoi, amphorae, and tiles.</i>	249
18.1	<i>Muro Leccese and the other Iron Age settlements in the Salento peninsula.</i>	260
18.2	<i>Muro Leccese, find spots of Early Iron Age and Archaic ceramics and structures.</i>	261
18.3	<i>Muro Leccese, Cunella district, traces of two huts.</i>	262
18.4	<i>Muro Leccese, DTM with location of the Iron Age ceramics and structures.</i>	263
18.5	<i>Vases and decorative motifs characteristic of matt-painted ware from Muro Leccese.</i>	264
18.6	<i>Vases imported from Greece and Greek apoikiai.</i>	265
18.7	<i>The Messapian era road network in the Salento peninsula.</i>	267
18.8	<i>Muro Leccese, Palombara district.</i>	268
18.9	<i>Muro Leccese, Palombara district. Vases.</i>	270
18.10	<i>Muro Leccese, Cunella district. Plan of the residential building.</i>	272
18.11	<i>Diorama of the place of worship in the archaeological area of Cunella.</i>	273
18.12	<i>Muro Leccese, Masseria Cunella district. Tombs 1 and 2.</i>	274
18.13	<i>Muro Leccese, fourth century BC walls.</i>	275
19.1	<i>Map of Sicily, showing the Bronze Age sites mentioned in the text.</i>	282
19.2	<i>The defensive wall at Bronze Age site of Mursia, Pantelleria.</i>	283
19.3	<i>The Late Bronze Age excavations at Mokarta.</i>	283
19.4	<i>Monte Bonifato, showing its steep approaches.</i>	284
19.5	<i>Map of western Sicily showing the Iron Age sites mentioned in the text.</i>	284
19.6	<i>The urban layout of Eryx.</i>	285
19.7	<i>The urban layout of Segesta.</i>	286
19.8	<i>The orthogonal grid and Iron Age/Classical/Hellenistic finds of Salemi.</i>	287
19.9	<i>The archaeological sites of Salemi territory.</i>	287
19.10	<i>The temple of Segesta, facing west.</i>	291
20.1	<i>Map of Sardinia showing sites mentioned in the text.</i>	300
20.2	<i>Plan of Nora and the Punic quarter under the forum.</i>	301

20.3	<i>Main amphora types discussed.</i>	302
20.4	<i>Dating profiles of amphora types.</i>	303
20.5	<i>Plan of nuraghe S'Urachi and cross-section of the ditch in area E.</i>	304
20.6	<i>Dating profile of the amphora types from the case study at nuraghe S'Urachi.</i>	305
20.7	<i>Dating profiles of Phoenician amphora types.</i>	306
21.1	<i>Early iron and the distribution of Huelva-Achziv type fibulae on the Iberian Peninsula.</i>	317
21.2	<i>Three copper alloy bowls dated to the decades around 800 BC.</i>	319
21.3	<i>The Phoenician, Euboean, Etruscan and Latin alphabetic letters.</i>	320
21.4	<i>Early monumental architecture in Italy and Spain.</i>	322
21.5	<i>Provenance of ceramics from the ninth century BC, pre-Carthage Utica (Tunis).</i>	324
22.1	<i>Fürstensitze north of the Alps and selected sites in Mediterranean Europe.</i>	330
22.2	<i>The Heuneburg agglomeration during the mudbrick wall phase.</i>	331
22.3	<i>Indicative lifespans of selected Fürstensitze sites.</i>	331
22.4	<i>Aerial view of the gatehouse of the Heuneburg lower town during the excavation.</i>	332
22.5	<i>Large ditch at the south foot of wall 3 at Mont Lassois.</i>	333
22.6	<i>Reconstructed monumental building in the Heuneburg Open-Air Museum.</i>	334
22.7	<i>Fired clay loom weight and spindle whorls from the Heuneburg.</i>	335
22.8	<i>Comparison between grave textiles and other textiles.</i>	337
22.9	<i>Tablet-woven band, reproduced after a textile from Hochdorf.</i>	338
22.10	<i>Functions of textiles in graves.</i>	339
23.1	<i>Map of the south of France showing the main settlements of the Early Iron Age.</i>	346
23.2	<i>Mailhac (Aude).</i>	350
23.3	<i>Examples of apsidal floorplans of wattle-and-daub (a) or cob houses (b–d).</i>	352
23.4	<i>Examples of rectangular floorplans of houses with one or more rooms.</i>	353
23.5	<i>Pech Maho (Sigean, Aude).</i>	355
23.6	<i>Examples of functional combinations of apsidal and rectangular floorplans.</i>	356
23.7	<i>Early examples of urban planning combining blocks of houses with a system of streets.</i>	357
23.8	<i>a–c) Examples of rectangular floorplans; d–e) houses of La Liquière.</i>	359
23.9	<i>Montlaurès (Narbonne, Aude).</i>	360
24.1	<i>Map of northern Iberia showing the sites mentioned in the text.</i>	368
24.2	<i>Pottery workshop of Hortes de Cal Pons.</i>	371
24.3	<i>Bases of Iberian amphorae.</i>	372
24.4	<i>Les Guàrdies (El Vendrell).</i>	373
24.5	<i>Castellet de Banyoles.</i>	375
24.6	<i>Mas Castellar de Pontós.</i>	376
24.7	<i>Coll del Moro de Gandesa.</i>	378
24.8	<i>Sant Antoni de Calaceit.</i>	379
24.9	<i>Els Estincells.</i>	380
25.1	<i>General location of the area under study.</i>	386
25.2	<i>View of Sant Jaume.</i>	387
25.3	<i>Plan of Sant Jaume.</i>	387
25.4	<i>Aerial view of La Moleta del Remei.</i>	389
25.5	<i>Aerial view of La Ferradura.</i>	389
26.1	<i>Tumulus 'A' at Setefilla.</i>	396
26.2	<i>Sample of matrices and tools from the so-called goldsmith's graves at Cabezo Lucero.</i>	397
26.3	<i>Iberian tombs with grave goods connected with weighing metal.</i>	398
26.4	<i>Spatial distribution of tools in rooms of Iberian oppida.</i>	400
26.5	<i>Iberian funerary pillars crowned by heraldic beasts.</i>	402
26.6	<i>Enthroned Iberian ladies: a) Cerro de los Santos; b) Baza.</i>	403
26.7	<i>Reconstructions: a) La Bastida de les Alcusses; b) El Castellet de Banyoles.</i>	403
26.8	<i>Bronze horseman from La Bastida de Les Alcusses and reconstruction as a sceptre.</i>	404
27.1	<i>Map of the study area showing the main sites mentioned in the text.</i>	410
27.2	<i>Metallurgical workshop at La Fonteta.</i>	412
27.3	<i>Plan of Alt de Benimaquia and local amphorae.</i>	413

27.4	<i>Plan of El Oral.</i>	414
27.5	<i>The territory of El Puig d'Alcoi and the secondary rural settlements.</i>	416
27.6	<i>Different furnaces for iron metalwork from La Cervera.</i>	416
27.7	<i>Plans of walled settlements: a) Covalta; b) Puig d'Alcoi; c) La Bastida de les Alcusses.</i>	417
27.8	<i>Aerial view of the storerooms at La Bastida de les Alcusses.</i>	418
27.9	<i>Plan of Block 5 at La Bastida de les Alcusses.</i>	419
27.10	<i>Weapons ritually 'killed' in the West Gate, La Bastida de les Alcusses.</i>	419
28.1	<i>Cancho Roano: a) general plan; b–c) reconstructions of the external rooms.</i>	426
28.2	<i>Map of sites considered as post-Orientalizing palatial complexes.</i>	427
28.3	<i>La Mata.</i>	428
28.4	<i>Post-Orientalizing settlements: a,d) El Chaparral; b) La Carbonera; c) Los Caños.</i>	431
28.5	<i>Millstones and amphorae from post-Orientalizing sites in Middle Guadiana.</i>	433
28.6	<i>Storage building at the Orientalizing site of El Palomar, Oliva de Mérida.</i>	434
28.7	<i>Greek pottery from Cancho Roano, late fifth century BC.</i>	436
28.8	<i>Antique (sixth-century BC) goods in post-Orientalizing contexts.</i>	437
28.9	<i>The Orientalizing site of Medellín.</i>	439
28.10	<i>Ancient toponymy in southwestern Iberia.</i>	440

Tables

7.1	<i>Sites in Attica, late eleventh to seventh century BC.</i>	78
8.1	<i>Dates: abbreviations and chronology.</i>	90
9.1	<i>List of criteria for defining cities.</i>	108
9.2	<i>Inventory of houses and buildings with their shape, dimensions and chronology.</i>	111
10.1	<i>Variations through time of principal type of craft occupation.</i>	128
10.2	<i>Variations through time of the maximum area of all craft occupations.</i>	129
10.3	<i>Padova, average duration in years of the main craft occupations for each period.</i>	129
10.4	<i>Padova, the development of craft industries as monitored in 29 craft workshops.</i>	130
10.5	<i>Positive correlation between size and duration of activity of craft workshops.</i>	134
10.6	<i>The composition of funerary vessels in the earliest graves from Padova.</i>	140
14.1	<i>Types of tombs excavated at Poggio Mengarelli, Vulci (2016–2018).</i>	196
17.1	<i>Type 1.</i>	234
17.2	<i>Type 2.</i>	234
17.3	<i>Type 3.</i>	235
17.4	<i>Type 3A.</i>	235
17.5	<i>Type 3B.</i>	235
17.6	<i>Type 3C.</i>	236
17.7	<i>Type 4.</i>	236
17.8	<i>Type 5.</i>	237
17.9	<i>Type 6.</i>	237
17.10	<i>Chaîne opératoire of Etruscan pithos manufacture.</i>	238
21.1	<i>Number of iron artefacts per phase at Torre Galli (c. 950–850 BC).</i>	318

Chapter 27

Urbanization and social change in southeast Iberia during the Early Iron Age

Jaime Vives-Ferrándiz Sánchez

This chapter deals with the archaeological evidence for processes of urbanization in eastern Iberia (Fig. 27.1) during the early Iron Age (c. 700–400 BC) from the viewpoint of the local economies. I will address to what extent these economies were connected to a wider network of settlements and how this pattern informs the Iberian urban experience. A starting point will be the economic features of these sites. In what directions did they change and why? Connectivity, mobility, politics and power are at the core of these questions. Among the social, economic and political implications of these processes, I will pay special attention to the latter. I shall identify material evidence for the emergence of political communities and institutions connected to the processes of urbanization.

In the first part of this chapter, I will briefly provide an overview of the theoretical and methodological underpinnings of my approach and some basic features of the urban fabric in the area of study. In the following two sections, I will empirically illustrate the economies of production in contexts in which metals and farming were the basis for power. In the last part of this contribution, I will show how and to what extent these processes of urbanization transformed socio-political relations. Urbanization entails processes of emergence of elites that in due course constituted new forms of political power. These changes are first visible in the funerary realm in the sixth century BC, and from the fifth century BC in the settlements, where new political institutions emerged.

Iberian urbanization: connectivity and dispersed territories

My methodological position to understand processes of urbanization in this area starts from considering settlements as material culture, fundamental in the constitution of social relations and not simply as an

epiphenomenon to them. From this basic tenet, it follows that socio-political institutions and ideologies are inscribed in material culture. Because urbanization operates on various levels, I will deal with this issue privileging connections of the settlements to a wider world, to other arenas, and social practices. This has proved to be fruitful, because a number of studies emphasizing connectivity, exchange and intensification as common features of urbanization have provided fertile ground for a comparative archaeology across the Mediterranean (Horden & Purcell 2000; Osborne & Cunliffe 2005; Riva 2010).

Secondly, following Osborne's suggestion (2005, 5), I approach the Iberian nucleated settlements as a historical problem in itself: these sites are the question to be researched and not the answer. Gone is the time when Iberian, Mediterranean – or European, for that matter – urban forms were seen as failed or local attempts at other – namely Greek or Roman – standard models. Not far from these views is the use of checklists for recognizing urban features (see Osborne 2005 for a critical overview). The town facilitates new economic, social and political activities.

If we take seriously this approach – the urban as the question, not the answer – one obvious starting point is to see what is specific to urbanization in eastern Iberia. A couple of Iberian features are worth highlighting (and this also applies to much of the far western Mediterranean): urbanization is expressed in many forms but processes of urbanization did not involve the creation of large settlements. In fact, we are dealing with relatively small sites in comparison to other Mediterranean contexts, of no more than 5–10 ha, and most of them do not extend beyond 2 ha. Some coastal sites are even smaller. However, these sites were all characterized by relatively packed urbanism and high-density occupation. Their foundation can be seen as the material product of the 'desire for living

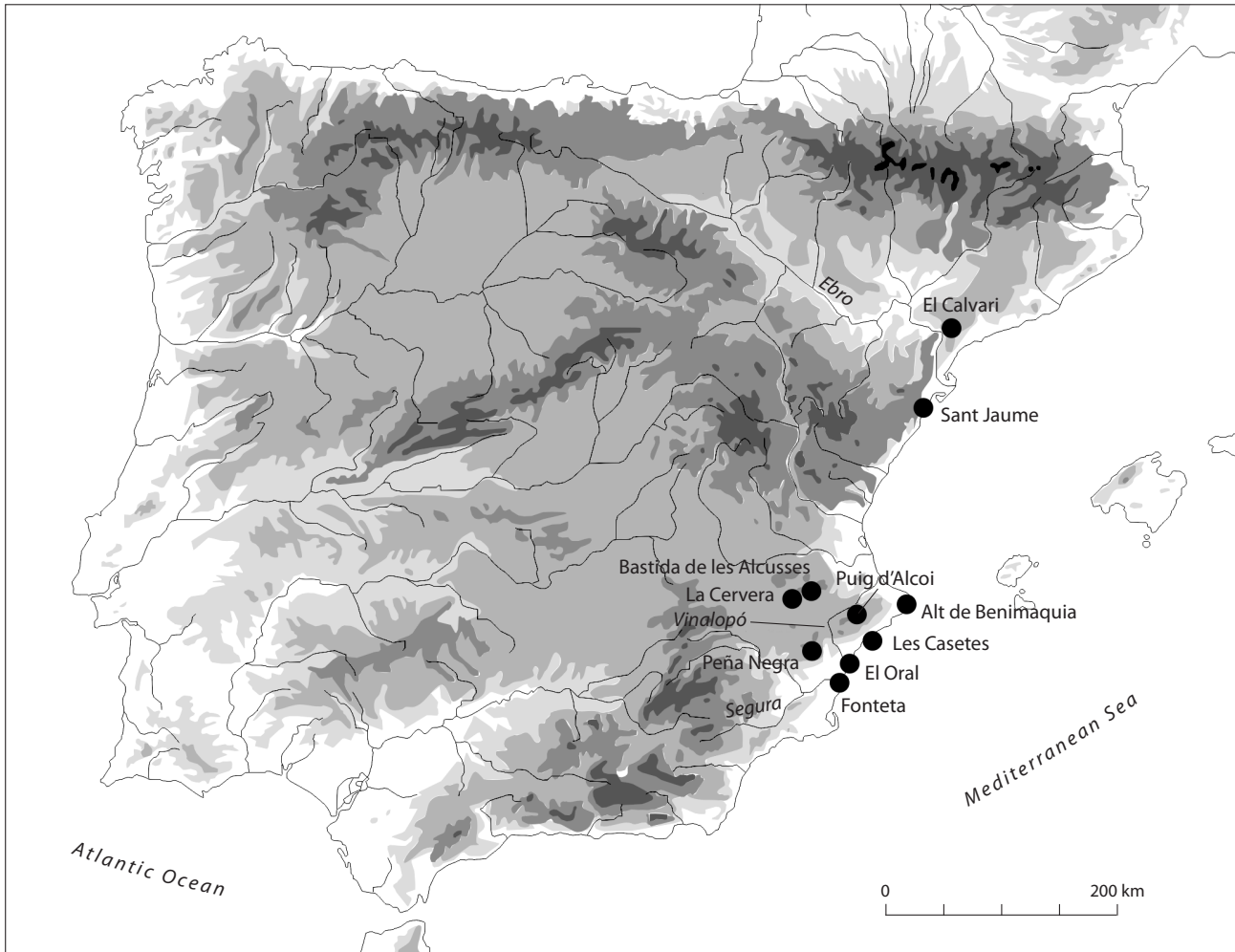


Figure 27.1. Map of the study area showing the main sites mentioned in the text.

together' (Osborne 2005, 8) of communities of no more than 500 people.

Most of these Iberian agglomerations were founded from scratch and in a short period of time. From their very beginning, they were enclosed spaces, and they were not subject to population growth, expansions and renovations. For the most part, they were very short-lived settlements, abandoned after one or two centuries. It is worth mentioning that there is not a gradual nor punctuated development towards increasingly larger settlements.

Research about the urban as the question requires primarily investigating broad relations between these settlements and the larger environment, and not looking 'from the vantage point of city walls' (Horden & Purcell 2000, 90). Many scholars have advocated a concept of the urban that goes beyond these limits and understands the town in a wider space (for instance Emanuele Greco, cited in de Polignac 2005, 48; see also

Morgan 2003). In other words, processes of urbanization must be viewed in connection with processes of ruralization, although I am aware that these were not two clearly separable phenomena at the time. In fact, most of the sites I will deal with in this paper contained farming implements and feature facilities for processing agricultural produce. In other words, households in towns were economically embedded in the countryside.

Urbanization arose alongside contacts with the wider Mediterranean world. Networks of settlements and connections, both long-distance and short ones, shaped these phenomena. 'Interdependence is essential for survival, and urbanization is the product of that interdependence' (Purcell 2005, 255). Therefore, a more nuanced view of urbanization invites us 'to conceive towns less as separate and clearly definable entities and more as loci of contact or overlap between different ecologies' (Horden & Purcell 2000, 100). In eastern Iberia, sites were very close to each other, and their

location and easy access must have promoted – and was derived from – relations between them.

The integration of settlements in long-distance exchange routes is one of the defining features of urbanization processes, as has been recognized in other Mediterranean contexts (de Polignac 2005, 65; Riva 2010, 184). This system of connections is to be seen as operating both within its immediate territory and outside it, including the networks of maritime exchange. On this matter, the search for control of resources and their exploitation is another key issue and no wonder that connectivity gave the elites opportunities for intensification. The foundations for their power were primarily based on land resources and the exploitation of metals. They promoted technological innovation to these ends. As a corollary, production and distribution are inseparable.

Cemeteries are more often than not part of the processes of urbanization, as it has compellingly been demonstrated in Etruria, where ‘the tomb constituted the physical, material and conceptual space where elite groups transformed their prestige into political authority’ (Riva 2010, 177). Likewise, I contend that in Iberia the tombs were places where political relations were structured, although there were geographical and chronological variations. At any rate, ideologies were manipulated *both* in tombs and in other public spaces in the settlements. This is more evident from the sixth and fifth centuries BC onwards.

Local economies into broader networks

The indigenous inhabitants established in the lower valleys of Vinalopó and Segura rivers had been actively involved in long-distance exchange since the Late Bronze Age as can be seen at Peña Negra. The site was occupied without interruption between the tenth–ninth and the sixth centuries BC (González Prats 1983). Diverse architectural layouts have been recorded in the settlements, from small huts made in perishable materials to terraced areas with elongated domestic structure. It is difficult to date with precision this variation in the architecture due to the nature of the archaeological record, but it appears as if different construction techniques were deployed simultaneously.

Intense metallurgical activity has been recorded in the early phases of occupation: swords and axes were produced in clay moulds and exchanged in long-distance regional networks (González Prats 1992). The situation in Peña Negra is not an exception, as it is reproduced throughout the area. At other sites, like the nearby settlement of El Bosch, stone casts to produce swords and axes dated around the eighth century BC have been recorded (Trelis 1995, 185; Trelis *et al.* 2004,

320). This evidence indicates that specialized activities were not centralized in one site within the settlement pattern, and households seized control of the exchange networks in order to increase power.

Around the eighth century BC, these communities saw people of Phoenician origins settling in a promontory on the coast by the mouth of the Segura river. The settlement of La Fonteta (Rouillard *et al.* 2007; González Prats 2011; 2014) must be understood in relation to the Phoenician trade diaspora throughout the Mediterranean and into the Atlantic (Aubert 2006, 94–6). These movements of people, ideas and materials are by no means exclusive for the western Mediterranean. From the early first millennium BC, increasing interactions in different directions, and involving either long-distance connections or short ones, made the Mediterranean ‘mediterraneanized’ (Broodbank 2013, 53 and 546). This situation provided people, and especially the elites, with an array of opportunities to engage with new objects, know-how and materials, and they varied from one region to another. Consumption practices were altered as a consequence. Intensification of production and engagement with new technologies are other consequences of such interactions. Let us move on to these economies.

‘Few routes are really dictated by nature’ (Broodbank 2013, 64) and direct access to the sea was crucial for the political economy at the time in this place. In fact, Fonteta’s location speaks volumes about the newcomers’ interest in settling by the sea and connecting to Mediterranean overseas networks. There is evidence of copper, lead, silver and iron metallurgy already in the earliest levels of the settlement (Renzi 2014). Iron metallurgy is a novelty at this time and its introduction is believed to be linked to the Phoenicians’ activities. Iron ores, iron slag and hammer scale provide evidence for metallurgical workshops and smithing activities at La Fonteta during the eighth and seventh centuries BC, either for the production of iron objects or for other stages of its processing (Fig. 27.2) (Renzi *et al.* 2013, 181).

There are no rich local ores in this area, but the existence of powerful indigenous groups with long-distance relations may have attracted the early Phoenician settlement. Some of the exploited minerals were of polymetallic composition, and were most likely from the area of Málaga or Granada. Be this as it may, the newcomers in La Fonteta must have been involved in trading networks. In fact, relations with indigenous settlements existed from the very beginning of the Phoenician presence in the area and they were driven by a close co-existence between groups (Vives-Ferrándiz 2008 and 2014). Other pieces of evidence, for instance the distribution of metal ingots (Renzi 2010),



Figure 27.2. Metallurgical workshop at La Fonteta (after González Prats 2011).

draw a social scenario in which the territory was not sharply divided in terms of an inland-coastal division.

In the second half of the seventh century BC, the Phoenicians extended their trading relations to new areas and intensified the networks already in place. Thus, beyond Cape de la Nao, up to western Languedoc, the Phoenicians traded with local people, looking for metals and other natural resources (Aubert 2009, 344). Sites located on the coast and next to waterways became important nodes of contact: for instance, the area around Cape de la Nao, the mouth of the rivers Xúquer, Millars, Sènia and, of course, the river Ebro. The expansion of Phoenician trade brought local economies into broader networks of regional or interregional exchanges.

This complexity is hinted at by the fact that the circulation of metal may have involved different spheres of exchange other than the ones considered so far. Although local communities had exploited mineral resources since the Late Bronze Age, and metal had long circulated, metallurgical activity increased around this time, revealing the opportunities Phoenician trade

brought to the area. The occurrence along the eastern coast of Iberia of copper-based cake ingots, suggests that metal circulated in different forms (Montero-Ruiz *et al.* 2010–2011). Lead isotope analyses of metal objects found in El Calvari de El Molar and Can Roqueta have confirmed that the origin of the metal is the mining district of Linares or Almería (Montero-Ruiz *et al.* 2012) and that it reached the eastern coast via Phoenician trade with indigenous communities. This evidence reinforces the complexity of the situation and the fact that the western Mediterranean during this period was more often than not interconnected in a variety of social, cultural and economic networks.

Agricultural intensification

Intensification of production and the redistribution of surplus are important changes dated to this period. *Amphorae* appear in the Iberian archaeological record in the eighth century BC – the earliest occurrences being local types of western Phoenician origin. As standardized containers, *amphorae* are an expression of

the regulation of trade and of the extraction and redistribution of agricultural surplus. *Amphorae* contained different foodstuffs, among which wine had the lion's share. Wine trade not only contributed to changes in the economy of Phoenician settlements, stimulating production and new high-risk investment in the land, but also contributed to changes in consumption practices. The demand for wine also promoted local production at indigenous sites such as l'Alt de Benimaquia, where a local elite set up their own production around the turn of the seventh century BC (Fig. 27.3) (Gómez Bellard *et al.* 1993).

Phoenician-type *amphorae* – probably of local origin – with seals, stamps and graffiti are recorded at the sites of Peña Negra, Monastil and Camara around the seventh and sixth centuries BC (González Prats 1983, 228), probably intended for redistribution along the Vinalopó valley. The similarity and coincidence of the stamps and seals – circles, crosses and stars – in a small area of the Vinalopó valley reveal an interest in controlling production and suggest a degree of economic competition (Vives-Ferrándiz 2008, 251). Yet, standardization of measures, seals and weights and the storage and exchange of produce show that there was a certain degree of cooperation between the elites who controlled the networks of exchange.

Two important points are to be emphasized. Firstly, these developments were clearly influenced by western Phoenician technological know-how. Not only do the wine presses at Alt de Benimaquia,

quadrangular basins recovered with a clay wash, point to clear connections to oriental Phoenician practices, but also locally produced *amphorae* for redistributing this product were copies of western Phoenician types (Álvarez *et al.* 2000). And secondly, at Alt de Benimaquia, we start to recognize a historical feature of this process of urbanization: the close integration between the countryside and the walled nucleated settlement – the site features walls and towers unseen in the area before. This is by no means an obvious occurrence: although settlements have always been connected in one way or another to the surrounding landscape – cultivation matters – we witness from the sixth century BC in eastern Iberia that trading activities and the rural hinterland increasingly influenced each other. Urban and rural go together and, as a corollary, production and redistribution are to be seen as inseparable.

Over the following two centuries, between the sixth and the fourth century BC, this integration started to be more evident and affected several economic realms, although the production of cash-crops for trade stands out as the most visible one. One avenue for future research is to understand to what extent textile production was affected by developments aimed at trading with the wider world. At sites such as Peña Negra, La Fonteta, El Oral (Fig. 27.4) (Abad & Sala 2001; Abad & Sala 2009) or La Picola (Badie *et al.* 2000) – the latter two walled settlements of no more than 1 ha located on the coast – loom weights

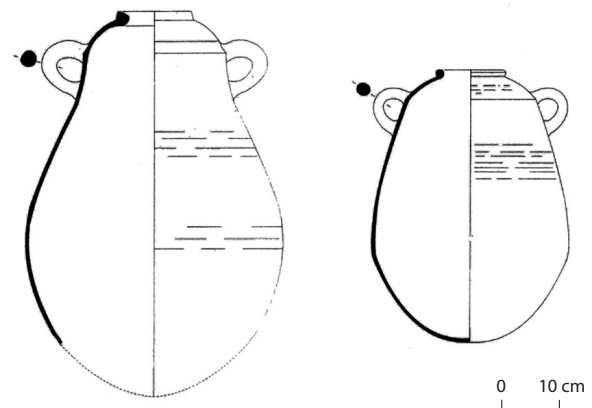
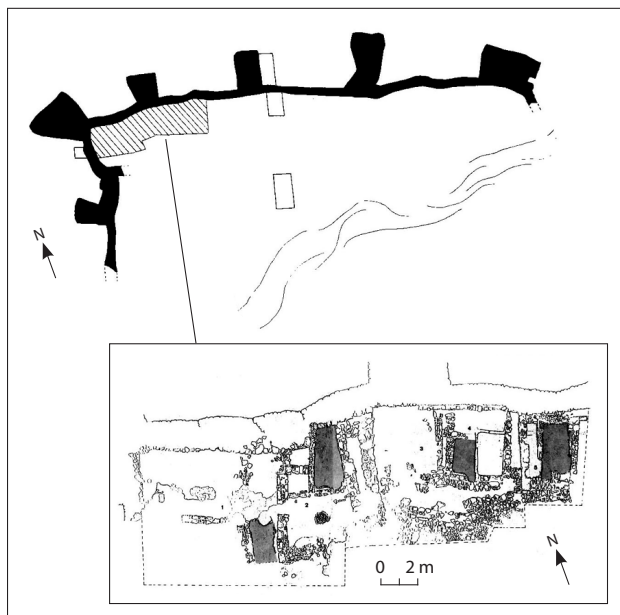


Figure 27.3. Plan of Alt de Benimaquia (wine presses are grey-shaded) and local amphorae inspired by western Phoenician types (after Álvarez *et al.* 2000).



Figure 27.4. Plan of El Oral (after Abad & Sala 2009).

seem to be connected to domestic production of textiles and there are no large facilities for weaving. Admittedly, a surplus from the production of different households might have been mobilized for trading activities, but this point is difficult to confirm based on the archaeological evidence we have. Nonetheless, exclusive imported bronzes for feasting at El Oral and Attic tableware at La Picola suggest that direct contacts with Mediterranean trade played a key role at these sites.

Evidence of substantial redistribution and activities for the processing of agricultural produce have been attested in coastal settlements (see details in Vives-Ferrándiz 2018), in ports that acted as ‘visible intensifications of the wider network’ (Horden & Purcell 2000, 168). For instance, the settlement of La Illeta dels Banyets is set on a peninsula of about 0.7 ha. The site is dated to between the second half of the fifth century up to the third century BC (Olcina *et al.* 2009 with references). Agricultural processing and storage for redistribution were important features of the site because at least two wine-presses and one oil-press and a workshop for the production of fish-based derivatives are attested. The way the wine basins were waterproofed suggests that some technical solutions were mediated by intense connections with areas of Punic cultural background. This was not just a port accessible to merchants, since foreign people participated in its constitution and, hence, this is a nice illustration of the way microregions cohere over long distances (Horden & Purcell 2000, 123). The networks need not be associated with settlement hierarchies but they project complex movements and relations.

The economic dimension of this site is paralleled in the nearby settlement of Tossal de les Basses (Rosser & Fuentes 2007). From the fifth century BC there were harbour facilities, and the settlement had a defensive wall fortified with towers and rich burials. Beyond the wall of the settlement there is an area devoted to metallurgical and ceramic production. Paleoenvironmental studies suggest that much of the agricultural processing at Tossal de les Basses focused on arboriculture as a productive strategy oriented towards the export of cash-crops and not for consumption in the domestic realm (Iborra & Pérez Jordà 2013). Opportunities to intensify production are the basis of an engagement in the activities of redistribution. I have suggested that the concept of redistributive engagement (Horden & Purcell 2000, 178) as embedded in the political economy has proven to be useful for an understanding of the variety of trade settlements in the area and the basis of their political authority (Vives-Ferrándiz 2018).

Inland sites were also part and parcel of these networks. They have to be seen as shaped by connectivity

and economic relationships with the wider Mediterranean, too, although not in a uniform way. In fact, only some walled hilltop settlements – called *oppida* in the Iberian bibliography – were well connected to trade routes and networks. At the same time, they were exploiting the land and relied heavily on farming. They are rather small settlements ranging in size from 1–2 ha. One such *oppidum* is El Puig d’Alcoi (Grau & Segura 2013), which developed over the course of the seventh to the fifth century BC into a central place. Elites of the site manipulated the opportunities that interaction brought about and expanded their influence over the immediate territory where other, smaller sites exploited resources (Fig. 27.5).

Other areas show the displacement of craft activities in specialized settlements. At La Cervera, furnaces and areas for metalwork have been documented in an area stretching over 2 ha where there are no dwellings (Fig. 27.6) (López Serrano *et al.* 2018). These structures are dated to the late fifth century BC and the first half of the fourth century BC. This site must have been important for the production and redistribution of iron objects. It is located in the vicinity of other, contemporaneous, hilltop, walled *oppida*, such as La Bastida de les Alcusses and La Mola de Torró. This pattern fits perfectly into a coherent organization of the territory and an occupation of the space aimed at the exploitation of resources on which the power of the elites rested.

Urbanization, institutions and political authority

Different degrees of interaction with the environment and differences in the strategies to maintain and increase power among all these inland hilltop sites existed (Bonet *et al.* 2015; Grau & Vives-Ferrándiz 2018). They all can be seen as particular expressions of the processes of urbanization and they have been identified as the central places of small polities whose existence depended on personal relations commanded by elites, and specifically by warriors. Certain traits of a collective organization for the whole community exist, namely public constructions such as the walls. However, the development of institutional structures (Whitelaw 2017) transcending these personal relations can be detected in some sites. In historical terms, this is a crucial social change for understanding urbanization.

This process began in the area around the late fifth century BC. I conceive institutionalized forms of power as resting on social structures transcending the life-cycle of its members. People, therefore, are subsumed into this structure of relations. At La Bastida de les Alcusses, power resting on a political institution has been identified. The site, of around 4 ha,

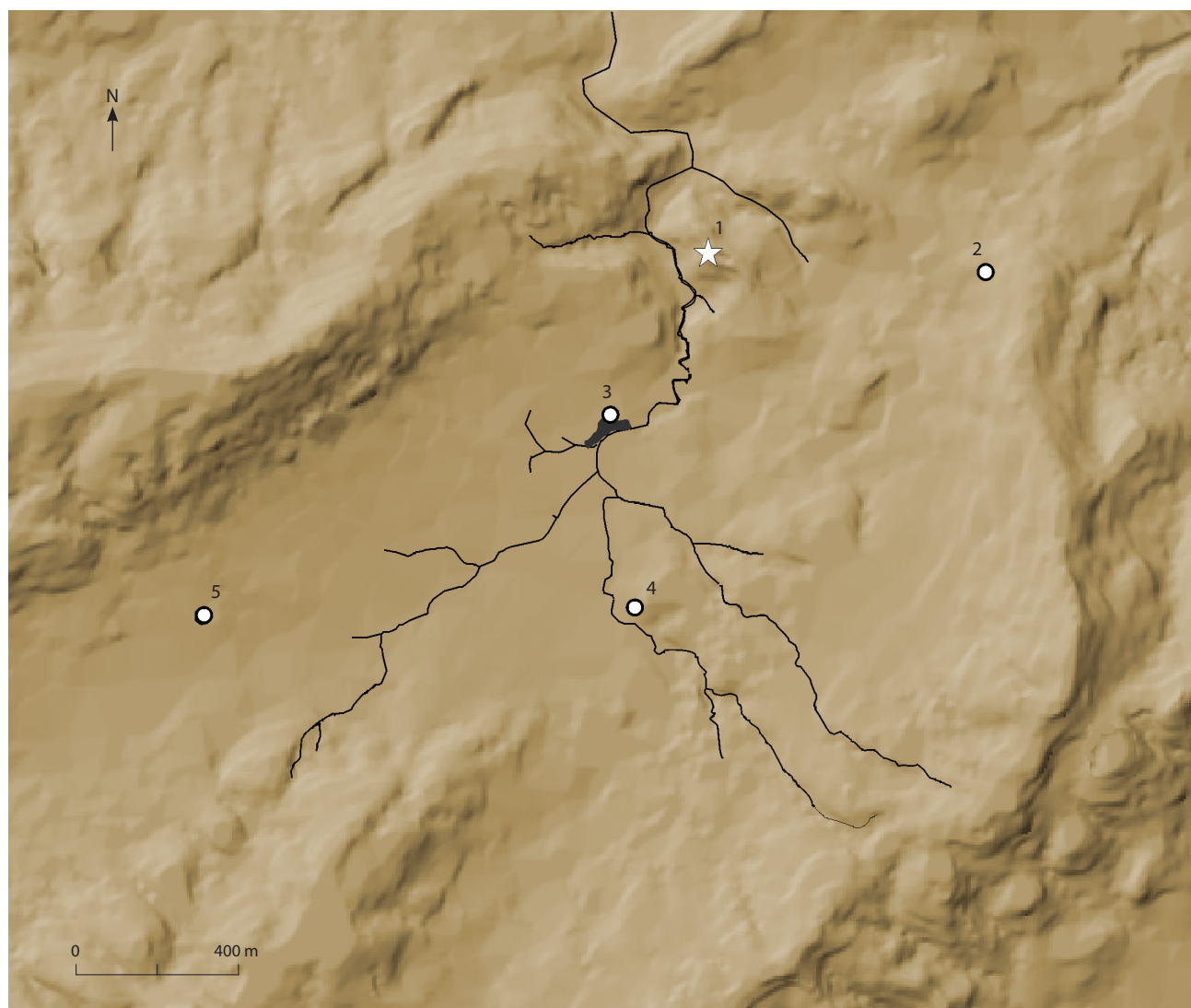


Figure 27.5 (above).
The territory of El Puig d'Alcoi and the secondary rural settlements: 1) El Puig; 2) La Pastora; 3) El Mas del Regall; 4) La Sarga; 5) La Moleta (after Grau & Segura 2013).



Figure 27.6 (left).
Different furnaces for iron metalwork from La Cervera (courtesy D. López Serrano).

has been extensively excavated and had a very short occupation span, centred between the late fifth and fourth centuries BC. This urban site is characterized by a relatively planned use of space, with streets running the length of the settlement that determined the location of blocks of houses which otherwise remained quite autonomous in their constituent details. Neither houses nor blocks resemble each other. Detailed micro-scale analysis has revealed that there were differences in access to land resources and labour between the houses. Some of them relied heavily on farming while others manipulated specialized knowledge (writing, metallurgy) or symbolic and immaterial resources, but these features never concentrate in one house or even one compound of the site. The picture is one of social heterogeneity, in which several houses acted as distinctive economic, social and symbolic units, while other dependent houses existed alongside (Vives-Ferrándiz 2013).

All these houses were certainly part of a larger urban unit: the *oppidum*. In contrast to smaller *oppida* such as Covalta or Puig d'Alcoi (of between 1–2 ha), La Bastida de les Alcusses is four times larger (Fig. 27.7). The distinctive nature of the economic and social relations at this site was based on a collective organization for the whole community. In this scenario, the elites developed material, social and ideological

mechanisms to constitute a collective institution of political authority. These mechanisms involved the control of the economic bases, the government and the collective memory. The archaeological identification of such institution in the urban fabric relies on three different contexts (see details in Bonet & Vives-Ferrándiz 2011; Vives-Ferrándiz 2013; Vives-Ferrándiz *et al.* 2015). Let us review them briefly.

Several features in the planning of this *oppidum* point to the centrality of surplus in its configuration. Firstly, three out of the four gates and some of the streets running along the length of the site were designed to enable the circulation of carts. Secondly, a central storeroom has been identified in Block 7 (Fig. 27.8). This communal building – part of it identified as a granary – is not physically linked to any house. On the contrary, it is open to a central square and well connected to different streets. The fact that ploughs and other agricultural tools were found in this building suggests that the grain did not necessarily come from the production of the households – for example, as tribute – but from mobilized labour. The social and economic relations in the urban fabric are radically different from what we see in other organizations such as chiefdoms, because the social structure has changed with the constitution of a centralized institution. That said, I do not mean that ownership of

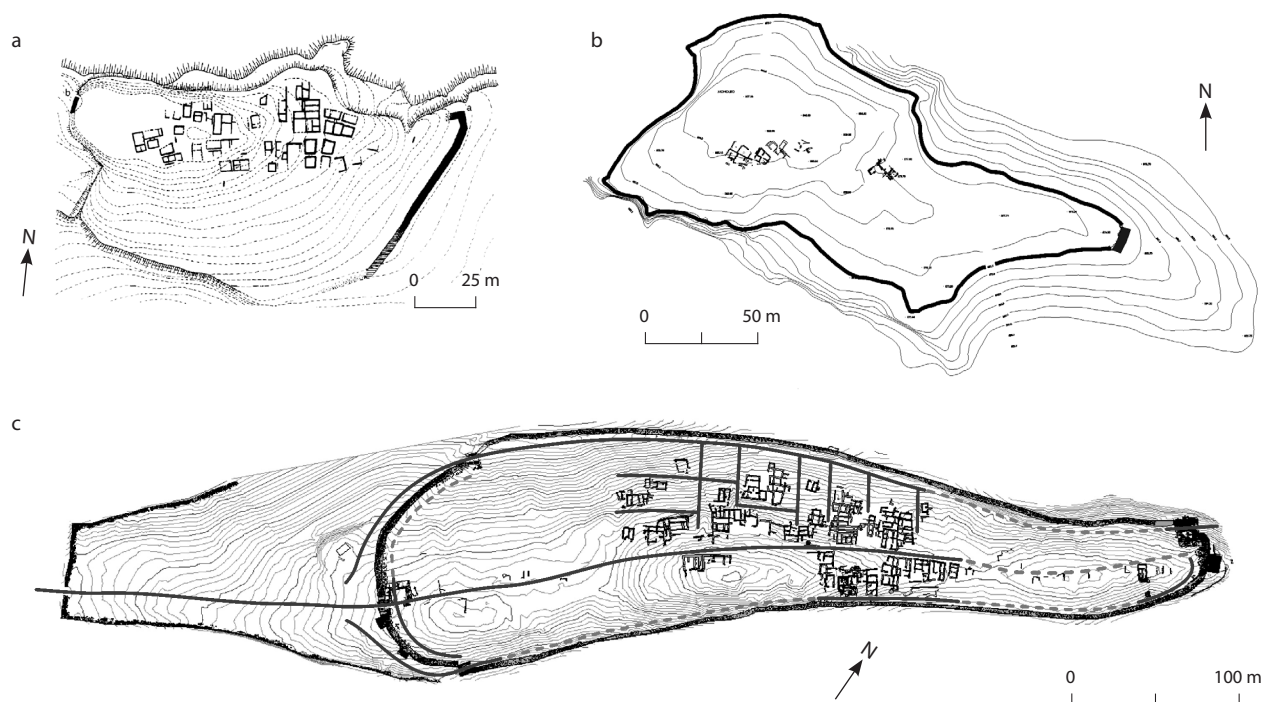


Figure 27.7. Plans of three walled settlements (not to scale): a) Covalta; b) Puig d'Alcoi; c) La Bastida de les Alcusses (after Bonet *et al.* 2015).



Figure 27.8. Aerial view of the storerooms at La Bastida de les Alcusses (Museum of Prehistory, Valencia).

this surplus belonged to the whole community but to various empowered households of the *oppidum*. This statement is supported by two other contexts, to which I turn my attention now.

Block 5 has been identified as a collective building for public meetings and gatherings. Two of its distinctive features are isolation – no other building is adjacent to it – and location on the highest part of the site. Its construction must have been planned from the foundation of the *oppidum*. The layout shows different adjacent large rooms open to courtyards(?), or open spaces, which suggest that meetings might have been a concern in the design of this building (Fig. 27.9). Interestingly, tableware abounds and no evidence for other activities – widely recorded in the other buildings such as farming, weaving, cooking, metalwork – has been identified. Therefore, the social structure at La Bastida de les Alcusses required a building for collective meetings that was part and parcel of the urban fabric. We lack data for a detailed understanding

of this context, but it may be the case that decisions beyond the level of the household might have been involved. Tableware attests that rituals of consumption were part of the social practices performed there (cf. Tuck in this volume).

The most impressive public construction in the Iberian *oppida* were the walls. Resources, know-how and labour were mobilized for their construction, and no wonder that they have long been seen as the materialization of the identity of the settlement. Around 375–350 BC, on the occasion of a partial renovation of the structures of the West Gate and the walls at La Bastida de les Alcusses, an outstanding collective ritual was performed and the remains buried beneath the gate. Five sets of ritually ‘killed’ iron weapons, residues of food and tableware – including red-figured Attic kraters – and the charred remains of the doors of the former gate were deposited (Fig. 27.10). This is not a foundation nor an abandonment ritual, but a ritual action carried out during the course of the occupation

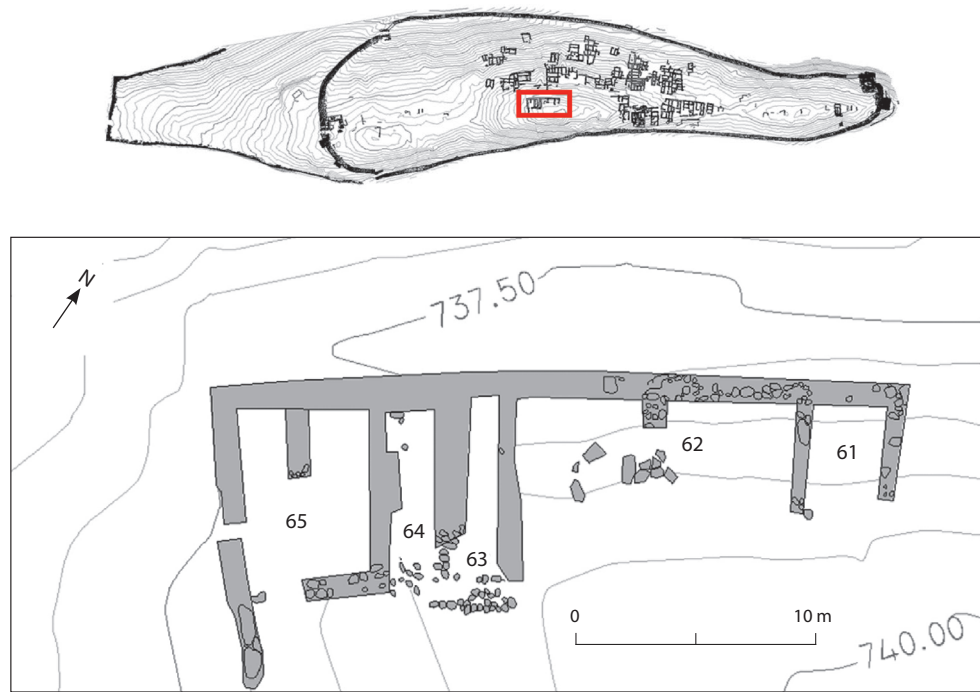


Figure 27.9. Plan of Block 5 at La Bastida de les Alcusses (after Bonet & Vives-Ferrándiz 2011).



Figure 27.10. Weapons ritually 'killed' in the West Gate, La Bastida de les Alcusses (Museum of Prehistory, Valencia).

of the settlement. This context nicely mirrors the ritual practices of the funerary realm in the area, reserved for high-status male individuals, in which weapons were 'killed' and placed in individual tombs. However, there are no human remains here and the five panoplies of the West Gate stand for a collective ritual.

Among the many historical dimensions of such an action, I want to stress the implications for understanding the urbanization processes, which is the concern of this volume. This elite ritual practice was a public enactment of rebuilding the gate on the same location – in which feasting might have also taken a no less significant role – that points to the existence of collective institutionalized forms of political authority. Because this deposit formed part and parcel of the new gate of the site, I suggest that it helped to generate a collective memory for the community based on continuity of the life-cycle of the *oppidum*, in a tremendously symbolic place of the *oppidum* such as the main gate.

The socio-political use of a public space of the *oppidum* can be seen as a defining feature of the processes of urbanization of southeast Iberia. We might be facing processes of differentiation between the various *oppida* in the landscape on the basis of their manipulation of memory. These processes of place-making were not given but constructed historically. This action was not a foundation ritual, because the community had occupied the site for more than half a century. Therefore, it may be the case that, in coming together, these communities embodied new forms of socio-political relations. Storerooms for surplus extraction, a building for public gatherings and the construction and a public place for the manipulation of memory, all form the material bases of an empowered political institution in which elites grounded their identity.

To be sure, this identity was progressively elaborated in connection with ritual practices in another setting: the funerary sphere. From the seventh to the fourth centuries BC we witness a gradual shift in social differentiation in death in this area (Vives-Ferrándiz 2008). The ritual of cremation is widespread but there is an array of variables such as the structure of the tomb, the degree of its monumentalization or decoration – sometimes with life-sized sculptures – or the grave goods. At any rate, the early Iberian tombs also show that elite identities were being constituted around a funerary ideology that claimed power through an exclusive funerary ritual, imports and weapons.

During the sixth century BC, cemeteries show the progressive introduction of iron weapons in tombs, which were otherwise associated with exclusive objects, imports and special architecture. The

exceptional objects in some tombs of Les Casetes, e.g. an Egyptian faience New Year's bottle in Tomb 18, a bronze incense burner in Tomb 17, or different gold beads, parts of necklaces and amulets in Tombs 3, 10, 12, 15 and 16 (García Gandia 2009), speak about the elite's access to a wider world through connections.

Funerary ideologies were eventually transformed, precisely at the time when political authority was being redefined in the *oppida*. During the first half of the fourth century BC, some tombs included sculptures of high-status adult women, the so-called 'Damas' (ladies), such as the renowned Lady of Elche or Lady of Baza (Aranegui 2015). At the same time, the number of tombs with weapons reached their peak in cemeteries (Quesada 1997). The tomb of the Lady of Baza (Tomb 155 at the cemetery of Cerro del Santuario) included four complete panoplies (Quesada 2010), mirroring the collective ritual of the West Gate at La Bastida de les Alcusses.

Some scholars have interpreted the sculptures of the so-called 'ladies' as important women who transmitted the heritage and property of the household or lineage (Aranegui 2015), and as representations of values attached to the house as an institution. It is the combination of these two funerary ideologies – warriorhood expressed in weapons and household embodied in the sculptures of women – that characterizes Iberian cemeteries in the fifth and fourth centuries BC. In short, political authority was constituted from the active manipulation of symbols and materials in the ritual domains of the tomb and the *oppidum*.

Conclusion

In this chapter, I have reviewed processes of urbanization in eastern Iberia from two main viewpoints: engagement in networks and creation of communities. Overall, I hope to have contributed with an archaeological body of data that may be fertile ground to make future comparisons among different areas of the Mediterranean.

A wider perspective on urbanization based on the networks of relations between different ecologies, settlements and people has helped to introduce in the discussion factors such as mobility, accessibility and surplus. I have dealt with these processes in the long-term, from the ninth–eighth centuries BC onwards, although it is admittedly difficult to pinpoint starting moments of these developments. The fundamental intensification of relations in the western Mediterranean from the eighth century BC onwards has been framed within the economic developments in the realm of production.

From the fifth century BC, major changes in the area go hand in hand with a new framework of social relations based on empowered households. Several settlements in eastern Iberia became the setting for these elites. Access to long-distance exchange and the control and redistribution of agricultural surplus are at the basis of such political and social changes. Large-scale workshops appear, not by chance, in connection with the elites' involvement in long-distance exchange although in different nodes of power. The creation of places of exchange connected to Mediterranean networks enabled the redistribution of production, both local and foreign. Centralized storage facilities are a feature of some settlements. The engagement of households with these nodes of power varies within each settlement and across the landscape.

The urbanization of this area was not a linear evolution, but a process of diverse engagements with other places and ecologies. It was an indigenous process of urbanization because these cities fundamentally differed from other Mediterranean cities. Diversity in the urban forms was the norm and there was no standard model for the creation of a new settlement. These observations inevitably lead us to highlight the 'dynamic and mobile nature of what is urban' (de Polignac 2005, 66).

Lastly, I have seen urbanization, first and foremost, as a process of creation of communities. Hence, I have stressed the role of collective rituals for political purposes of the elites: public gatherings on special occasions that marked the constitution of memory, either in the gate of a settlement or in a tomb. These actions were as relevant for the constitution of political authority as land ownership or the control of long-distance trade.

Acknowledgements

I thank the organizers of the symposium in Cambridge for their invitation to contribute my paper. Research for this work was carried out as part of the project HAR2014-54414-P (METIPO: Metales, tierra y poder durante la Edad del Hierro en el sureste de la península ibérica). I am thankful to Carlos Gómez Bellard, Alfredo González Prats, Ignasi Grau Mira, David López Serano and Feliciano Sala Sellés for providing figures to illustrate my chapter.

References

- Abad, L. & F. Sala, 2001. *Poblamiento ibérico en el bajo Segura. El Oral (II) y La Escuela*. Madrid: Bibliotheca Archaeologica Hispana 12.
- Abad, L. & F. Sala, 2009. La arquitectura y el urbanismo en El Oral (San Fulgencio, Alicante). Un ejemplo de asimiliación de la arquitectura fenicia y púnica, in *Phönizisches und punisches Stadtwesen*, eds. S. Helas & D. Marzoli (Iberia Archaeologica 13.) Mainz am Rhein: Verlag Philipp von Zabern, 499–513.
- Álvarez, N., J. Castelló & C. Gómez Bellard, 2000. Estudio preliminar de las ánforas del Alt de Benimaquia (Dénia, Alicante). *Quaderns de Prehistòria i Arqueologia de Castelló* 21, 121–36.
- Aranegui, C., 2015. Cuerpos sin rostro. Ostentación, violencia y representación social entre los iberos (siglos V–IV a.C.), in *Les estructures socials protohistòriques a la Gàl·lia i a Ibèria*, eds. M.C. Belarte, D. Garcia & J. Sanmartí. Barcelona/Tarragona: Universitat de Barcelona, Institut Català d'Arqueologia Clàssica, 23–37.
- Aubet, M.E., 2006. On the organization of the Phoenician colonial system in Iberia, in *Debating Orientalization. Multidisciplinary Approaches to Change in the Ancient Mediterranean*, eds. C. Riva & N. Vella. Monographs in Mediterranean Archaeology 10. London: Equinox, 94–109.
- Aubet, M.E., 2009. *Tiro y las colonias fenicias de Occidente*, 3rd edn. Barcelona: Bellaterra.
- Badie, A., E. Gailledrat, P. Moret, P. Rouillard, M.J. Sánchez & P. Sillières, 2000. *Le site antique de La Picola à Santa Pola (Alicante)*. Madrid: Casa de Velázquez.
- Bonet, H. & J. Vives-Ferrándiz, 2011. *La Bastida de les Alcusses. 1928–2010*. Valencia: Diputació de Valencia.
- Bonet, H., I. Grau & J. Vives-Ferrándiz, 2015. Estructura social y poder en las comunidades ibéricas de la franja central mediterránea, in *Les estructures socials protohistòriques a la Gàl·lia i a Ibèria*, eds. M.C. Belarte, D. Garcia & J. Sanmartí. Barcelona & Tarragona: Universitat de Barcelona, Institut Català d'Arqueologia Clàssica, 251–72.
- Broodbank, C. 2013. *The Making of the Middle Sea. A History of the Mediterranean from the Beginning to the Emergence of the Classical World*. London: Thames and Hudson.
- de Polignac, F. 2005. Forms and processes: some thoughts on the meaning of urbanization in Early Archaic Greece, in *Mediterranean Urbanization 800–600 BC*, eds. R. Osborne & B. Cunliffe. (Proceedings of the British Academy 126.) Oxford: Oxford University Press, 45–69.
- García Gandía, J.R., 2009. *La necrópolis orientalizante de les Casetes (La Vila Joiosa, Alicante)*. Alicante: Univeridad de Alicante.
- García i Rubert, D., F. Gracia & I. Moreno (eds.), 2016. *L'assentament de la primera edat del ferro de Sant Jaume (Alcanar, Montsià)*. Els espais A1, A3, A4, C1, Accés i T2 del sector 1. Barcelona: Universitat de Barcelona.
- Gómez Bellard, C., P. Guérin & G. Pérez Jordà, 1993. Témoignage d'une production de vin dans l'Espagne préromaine, in *La production de vin et de huile en Méditerranée*, eds. M.-C. Amouretti & J.-P. Brun. *Bulletin de Correspondance Hellenique* XXVI, 379–95.
- González Prats, A., 1983. *Estudio arqueológico del poblamiento antiguo de la Sierra de Crevillente (Alicante)*. Alicante: Anejo I de la Revista Lucentum.
- González Prats, A., 1992. Una vivienda metalúrgica en la Peña Negra (Crevillente, Alicante). Aportación al conocimiento del Bronce Atlántico en la Península Ibérica. *Trabajos de Prehistoria* 49, 243–57.

- González Prats, A., 2011. *La Fonteta. Excavaciones de 1996–2002 en la colonia fenicia de la actual desembocadura del río Segura* (Guardamar del Segura, Alicante), vol. 1. Alicante: Universidad de Alicante.
- González Prats, A., 2014. *La Fonteta 2. Estudio de los materiales arqueológicos hallados en la colonia fenicia de la actual desembocadura del río Segura* (Guardamar del Segura, Alicante). Alicante: Universidad de Alicante.
- Grau, I. & J.M. Segura, 2013. *El oppidum ibérico de El Puig d'Alcoi. Asentamiento y paisaje en las montañas de la Contestania*. Alcoi: Ajuntament d'Alcoi.
- Grau, I. & J. Vives-Ferrándiz, 2018. Entre Casas y comunidades: formas de organización y relación social en el área oriental de la península Ibérica (siglos V–II A.N.E.), in *Más allá de las casas. Familias, linajes y comunidades en la protohistoria peninsular*, eds. A. Rodríguez, I. Pavón & D.M. Duque. Cáceres: Universidad de Extremadura, 73–109.
- Horden, P. & N. Purcell, 2000. *The Corrupting Sea: A Study of Mediterranean History*. Oxford & Malden (MA): Blackwell.
- Iborra, M.P. & G. Pérez Jordà, 2013. Three systems of agrarian exploitation in the Valencian region of Spain (400–300 bc), in *Barely surviving or more than enough? The environmental archaeology of subsistence, specialization and surplus food production*, eds. M. Groot, D.M. Lentjes & J. Zeiler. Leiden: Sidestone, 131–50.
- López Serrano, D., A. Valero Climent, P. García Borja, J.A. Rodríguez Traver & J. Vives-Ferrándiz, 2018. Excavaciones arqueológicas en el yacimiento ibérico de La Cervera (La Font de la Figuera, Valencia), in *Actas de las Jornadas de Arqueología de la Comunidad Valenciana 2013–2015*. Valencia: Generalitat Valenciana, 41–53.
- Montero-Ruiz, I., M. Santos, C. Rovira, M. Renzi, M. Murillo-Barroso, M. Hunt, M. Gener & P. Castañer, 2010–2011. Lingotes plano-convexos de cobre en la primera mitad del I milenio AC en la Península Ibérica. *Boletín de la Asociación Española de Amigos de la Arqueología* 46, 99–119.
- Montero-Ruiz, I., N. Rafel, C. Rovira, X.L. Armada, R. Graells, M. Hunt, M. Murillo-Barroso, M. Renzi & M. Santos, 2012. El cobre de Linares (Jaén) como elemento vinculado al comercio fenicio en El Calvari de El Molar (Tarragona). *Menga. Revista de Prehistoria de Andalucía* 3, 167–84.
- Morgan, C., 2003. *Early Greek States Beyond the Polis*. London & New York (NY): Routledge.
- Olcina, M.H., A. Martínez & F. Sala, 2009. *La Illeta dels Banyets* (El Campello, Alicante). *Épocas ibérica y romana I. Historia de la investigación y síntesis de las intervenciones recientes (2000–2003)*. (Serie Mayor 7.) Alicante: Museo Arqueológico de Alicante.
- Osborne, R., 2005. Urban sprawl: what is urbanization and why does it matter?, in *Mediterranean Urbanization 800–600 bc*, eds. R. Osborne & B. Cunliffe. (Proceedings of the British Academy 126.) Oxford: Oxford University Press, 1–16.
- Osborne, R. & B. Cunliffe, 2005. *Mediterranean Urbanization 800–600 bc*. (Proceedings of the British Academy 126.) Oxford: Oxford University Press.
- Purcell, N., 2005. Statics and dynamics: ancient Mediterranean urbanism, in *Mediterranean Urbanization 800–600 bc*, eds. R. Osborne & B. Cunliffe. (Proceedings of the British Academy 126.) Oxford: Oxford University Press, 249–72.
- Quesada, F., 1997. *El armamento ibérico. Estudio tipológico, gráfico, funcional, social y simbólico de las armas en la Cultura Ibérica (siglos VI–I a.C.)*. (Monographies Instrumentum 3.) Montagnac: Editions Monique Mergoil.
- Quesada, F., 2010. Las armas de la sepultura 155 de la necrópolis de Baza, in *La dama de Baza. Un viaje femenino al más allá*, eds. T. Chapa & I. Izquierdo. Madrid: Ministerio de Cultura, 149–69.
- Renzi, M., 2010. La producción de ‘lingotes-hacha’ en el Levante peninsular: nueva valoración a partir de los materiales de La Fonteta (Guardamar del Segura, Alicante). *Revista d'Arqueologia de Ponent* 20, 127–44.
- Renzi, M., 2014. *La metalurgia del yacimiento fenicio de La Fonteta* (Guardamar del Segura, Alicante), Madrid: Bibliotheca Praehistorica Hispana 24.
- Renzi, M., S. Rovira, M.C. Rovira & I. Montero, 2013. Questioning research on early iron in the Mediterranean, in *The World of Iron*, eds. J. Humphris & T. Rehren. London: Archetype, 178–87.
- Riva, C., 2010. *The Urbanization of Etruria. Funerary Practices and Social Change, 700–600 bc*. Cambridge: Cambridge University Press.
- Rosser, P. & C. Fuentes, 2007. *Tossal de les Basses. Seis mil años de historia de Alicante*. Alicante: Patronato Municipal de Cultura.
- Rouillard, P., E. Gailledrat & F. Sala Sellés, F. 2007. *Fouilles de la Ràbita de Guardamar II. L'établissement protohistorique de La Fonteta (fin VIIIe-fin VIe av.J.-C.)*. Madrid: Collection de la Casa de Velázquez 96.
- Trelis, J., 1995. Aportaciones al conocimiento de la metalurgia del Bronce Final en el sureste peninsular: el conjunto de moldes de El Bosch (Crevillente-Alicante), in *Actas del XXIII Congreso Nacional de Arqueología* (Elche 1995). Elche: Ayuntamiento de Elche, 185–90.
- Trelis, J., F.A. Molina, M.A. Esquembre & J.R. Ortega, 2004. El Bronce Tardío e inicios del Bronce Final en el Botx (Crevillente, Alicante): nuevos hallazgos procedentes de excavaciones de salvamento, in *La Edad del Bronce en tierras valencianas y zonas limítrofes*, eds. L. Hernández Alcaraz & M.S. Hernández Pérez. Alicante: Instituto alicantino de cultura Juan Gil-Albert, 319–23.
- Vives-Ferrándiz, J. 2008. Negotiating colonial encounters: hybrid practices and consumption in Eastern Iberia (8th–6th centuries bc). *Journal of Mediterranean Archaeology* 21, 241–72.
- Vives-Ferrándiz, J. 2013. Del espacio doméstico a la estructura social en un oppidum ibérico. Reflexiones a partir de la Bastida de les Alcusses, in *De la estructura doméstica al espacio social. Lecturas arqueológicas del uso social del espacio*, eds. S. Gutiérrez & I. Grau. Alicante: Universidad de Alicante, 95–111.
- Vives-Ferrándiz, J. 2014. Mobility, interaction and power in the Iron Age Western Mediterranean, in *The Cambridge Prehistory of the Bronze and Iron Age Mediterranean*, eds. A. B. Knapp & P. van Dommelen. Cambridge: Cambridge University Press, 299–315.

- Vives-Ferrándiz, J., H. Bonet, Y. Carrión, C. Ferrer, P. Iborra, G. Pérez Jordà, F. Quesada & G. Tortajada, 2015. Ofrendas para una entrada: un depósito ritual en la Puerta Oeste de la Bastida de les Alcusses (Moixent, Valencia). *Trabajos de Prehistoria* 72(2), 282–303.
- Vives-Ferrándiz, J. 2018. Trading settlements on eastern Iberia during the Iron Age: between redistributive engagement and political authority, in *Trade and Colonization in the Ancient Western Mediterranean: The Emporion, from the Archaic to the Hellenistic Period*, eds. E. Gailledrat, M. Dietler & R. Plana-Mallart. Montpellier: Presses Universitaires de la Méditerranée, 91–101.
- Whitelaw, T. 2017. The development and character of urban communities in Prehistoric Crete in their regional context: a preliminary study, in *Minoan Architecture and Urbanism. New Perspectives on an Ancient Built Environment*, eds. Q. Letesson & C. Knappett. Oxford: Oxford University Press, 114–80.

Making cities

Large and complex settlements appeared across the north Mediterranean during the period 1000–500 BC, from the Aegean basin to Iberia, as well as north of the Alps. The region also became considerably more interconnected. Urban life and networks fostered new consumption practices, requiring different economic and social structures to sustain them. This book considers the emergence of cities in Mediterranean Europe, with a focus on the economy. What was distinctive about urban lifeways across the Mediterranean? How did different economic activities interact, and how did they transform power hierarchies? How was urbanism sustained by economic structures, social relations and mobility? The authors bring to the debate recently excavated sites and regions that may be unfamiliar to wider (especially Anglophone) scholarship, alongside fresh reappraisals of well-known cities. The variety of urban life, economy and local dynamics prompts us to reconsider ancient urbanism through a comparative perspective.

Editors:

Margarita Gleba is a Professor at the University of Padua and Honorary Senior Lecturer at University College London.

Beatriz Marín-Aguilera is a Renfrew Fellow at the McDonald Institute for Archaeological Research, University of Cambridge.

Bela Dimova is a A. G. Leventis Fellow in Hellenic Studies at the British School at Athens.

*Published by the McDonald Institute for Archaeological Research,
University of Cambridge, Downing Street, Cambridge, CB2 3ER, UK.*

The McDonald Institute for Archaeological Research exists to further research by Cambridge archaeologists and their collaborators into all aspects of the human past, across time and space. It supports archaeological fieldwork, archaeological science, material culture studies, and archaeological theory in an interdisciplinary framework. The Institute is committed to supporting new perspectives and ground-breaking research in archaeology and publishes peer-reviewed books of the highest quality across a range of subjects in the form of fieldwork monographs and thematic edited volumes.

Cover artwork by Kelvin Wilson.

Cover design by Dora Kemp and Ben Plumridge.

ISBN: 978-1-913344-06-1



UNIVERSITY OF
CAMBRIDGE

ISBN 978-1-913344-06-1



9 781913 344061