

Figure 1: The conclusion of Kamel's letter to James Petiver, 9 October 1702 (© The British Library Board, Sloane MS 4083A, f. 135v).

Figure 2: Kamel's 'Colocynthis pomi rosei, Indis Tabaiyag', including a reference to *Hortus Malabaricus* and to Kamel's article in the *Philosophical Transactions* (the latter is written in Petiver's hand). Beyond plants, Kamel's main interest was in insects: depicted here is his 'Scarabaeus buceros nasicornis primus', including a reference written in Petiver's hand to its portrayal in *Gazophylacium naturae et artis* (© The British Library Board, Sloane MS 4081, f. 2; 4083B, f. 20).

Figure 3: The ninth table of Petiver's *Gazophylacium naturae et artis* included a number of Kamel's drawings (Petiver, 1702).

Figure 4: The title page of Kamel's appendix to the third volume of Ray's *Historia plantarum* (Kamel, 1704b)

Figure 5: Kamel's drawing of 'Tchia' or the camellia (© Maurits Sabbe Library, Katholieke Universiteit Leuven, S.J. F° HS 112 K CAME 1700\*, f. 234)

Figure 6: Kamel's 'Description and figure of the true [Dioscorides's] amomum, or tugus' was published in the *Philosophical Transactions* (Kamel 1699).

Figure 1

+

Qui e Iconum in lucem prodijt, ut Exemplar submittere digni  
quæro. Ceterum enixe efflagito ut me errorum, qui passim  
in meis tibi communicatis scriptis occurrunt, amice commonefacias.  
His foveat Deus ut in longos annos salvas, et incolumis vivas  
et valeas, ut optat, et ex corde desiderat

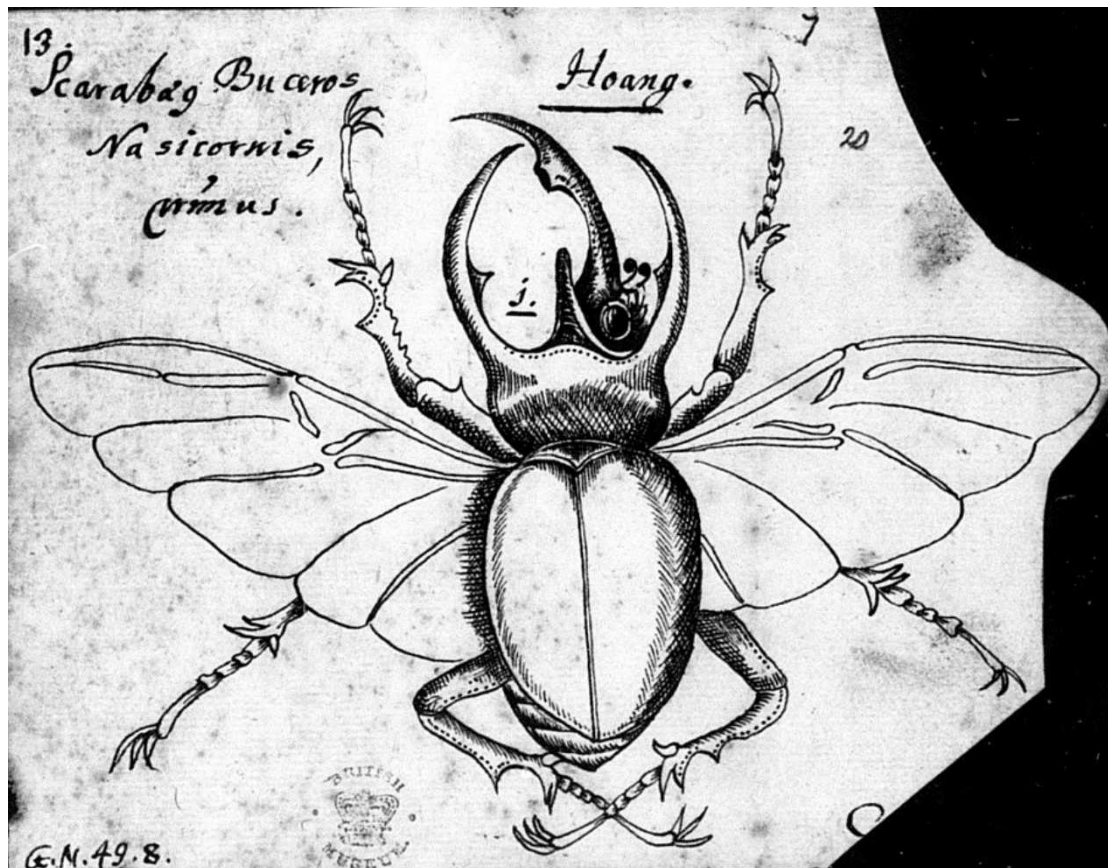
Datum Manila Octob. 9.  
Ani 1702.

Tua Dom. <sup>ci</sup> Semper Amicus  
obsequentissimus

Georgius Josephus Kamel.

Figure 2





# GAZOPHYLACII NATURÆ & ARTIS, Tab. 9.

Fig. 1. **T**estudinulus Philippensis luteus, nigro maculatus. The Luzone Turtle-Lady, I thus call it to distinguish it from Fig. 3. in the next Table.

2. 3. Aurelia & Erucago Ejusdem. These are after the Designs the Reverend Father George Joseph Camel lately sent me from Manila.

4. Buccinulum dentatum Mediterraneum, striis fasciatis maculatum. an Buccinum dentatum parvum, leviter striatum variegatum ventriosum List. H. C. l. 4. Sect. 11. Tab. 823. Fig. 42?

5. Papilio Angolensis ex phlo alboque mixtus. Brought from Angola by Mr. John Kirckwood Surgeon.

6. Alga tubulosa albida navibus adhærens. This I found plentifully growing to a Ships side in the River Thames.

7. Concha Veneris minor, maculata & oculata. nobis. C. V. parva, latiuscula, paululum gibbosa, ventre maculoso dorso, fusco & albis innumeris & paucis nigris puncturis depicto List. H. C. l. 4. S. 9. Tab. 696. Fig. 43.

8. Cato Simius volans Cameli. The Flying Cat-Monkey. See its Description in the Philosophical Transactions No. 277. p. 1065. 1. This strange Animal is found in the Philippine Isles, and its usual Abode there is on Trees.

9. Balanus compressus albus, sex fissuris sulcatus. nobis. Aët. Phil. No. 255. p. 10. This odd Shell Mr. James Cunningham brought me among the rest from the Isle of Ascension.

10. Papilio albus Angolensis apicibus miniaceis. Mr. John Kirckwood first brought me this from Angola, it hath since been caught at Wida, by Mr. Watt and Mr. Skeen Surgeons.

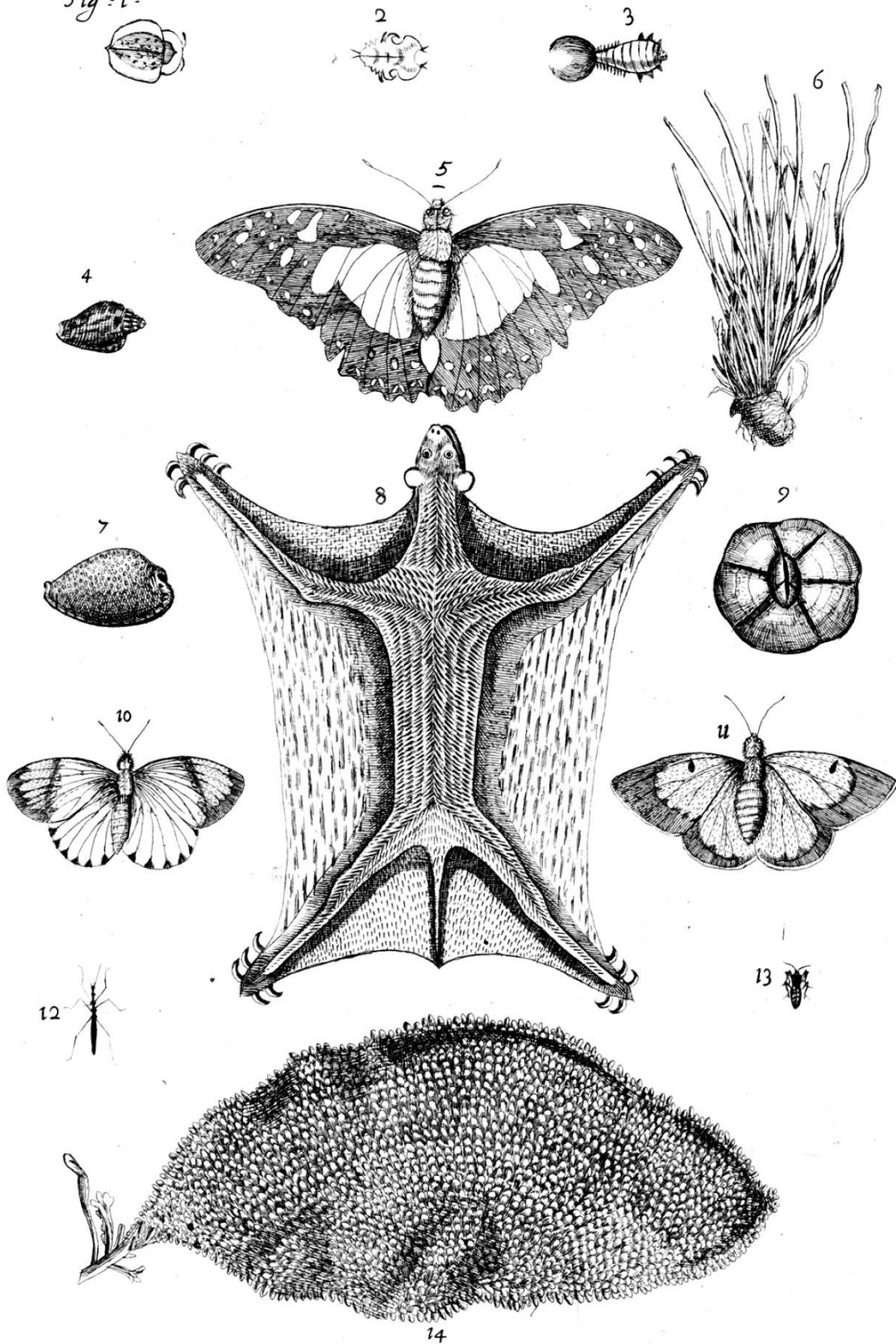
11. Papilio Capensis flavescens versicolor, apicibus nigrescentibus. This singular Fly Mr. John Starrenburgh sent me from the Cape of Good Hope, the ground of its Wings are yellow, varying with a Philamot Blush, if they hold it at a certain Position between you and the Light.

12. Tipula Londinensis angustissima. This I have observed on some Ponds about London: It's much slenderer and less than the common Water-Spider.

13. Tipula Hamstediensis brevior, ex croceo variegata. I have as yet met with this only in some Ditches about Bell-size at Hamstead.

14. Alga verrucosa Capensis. My Curious Friend Mr. Starrenburgh sent me this with several other elegant Sea-Productions, which shall be figured in my next Decade.

Fig : 1.



To Dr. HANS SLOAN, Fellow of the Colledge of Physicians, Secretary of the Royal Society &c. This Plate is humbly Dedicated by JAMES PETIVER F.R.S.

Figure 4

---

---

I

---

A P P E N D I X.  
H E R B A R U M  
Aliarumque  
S T I R P I U M

I N

Insulâ *L U Z O N E* Philippinarum

Primariâ Nascentium,

A Rev<sup>do</sup> Patre GEORGIO JOSEPHO CAMELLO, S. J.  
Observatarum & Descriptarum

S Y L L A B U S:

Ad *J O A N N E M R A I U M* transmissus ;

Additis etiam plurimarum *Iconibus*, ab Autore propria manu ad vivum delineatis ; quas ob sumptuum in *Chalcographos* erogandorum defectum impræsentiarum emittere non licuit.

---



Figure 5





Figure 6

---

I. A Description and Figure

Of the true

*Amomum*, or *Tugus*.

S E N T

From the Reverend Father *George Camelli*, at  
the *Phillipine Isles*, to Mr. *John Ray* and  
Mr. *James Petiver*, Fellows of the Royal  
Society.

---

