

# Major Improvements to the *Heliconius melpomene* Genome Assembly Used to Confirm 10 Chromosome Fusion Events in 6 Million Years of Butterfly Evolution

John W. Davey,<sup>\*,1</sup> Mathieu Chouteau,<sup>†</sup> Sarah L. Barker,<sup>\*</sup> Luana Maroja,<sup>†</sup> Simon W. Baxter,<sup>§</sup> Fraser Simpson,<sup>\*\*</sup> Richard M. Merrill,<sup>\*</sup> Mathieu Joron,<sup>†</sup> James Mallet,<sup>\*\*2</sup> Kanchon K. Dasmahapatra,<sup>\*\*3</sup> and Chris D. Jiggins<sup>\*,1</sup>

<sup>\*</sup>Department of Zoology, University of Cambridge, CB2 3EJ, United Kingdom, <sup>†</sup>Centre d'Ecologie Fonctionnelle et Evolutive, UMR 5175 CNRS - EPHE - Université de Montpellier - Université Paul Valéry, 34293 Montpellier 5, France, <sup>‡</sup>Department of Biology, Williams College, Williamstown, Massachusetts, 01267 <sup>§</sup>School of Biological Sciences, University of Adelaide, SA 5005 Australia, and <sup>\*\*</sup>Department of Genetics, Evolution and Environment, University College London, Darwin Building, Gower Street, WC1E 6BT, United Kingdom

ORCID ID: 0000-0002-1017-9775 (J.W.D.)

**ABSTRACT** The *Heliconius* butterflies are a widely studied adaptive radiation of 46 species spread across Central and South America, several of which are known to hybridize in the wild. Here, we present a substantially improved assembly of the *Heliconius melpomene* genome, developed using novel methods that should be applicable to improving other genome assemblies produced using short read sequencing. First, we whole-genome-sequenced a pedigree to produce a linkage map incorporating 99% of the genome. Second, we incorporated haplotype scaffolds extensively to produce a more complete haploid version of the draft genome. Third, we incorporated ~20x coverage of Pacific Biosciences sequencing, and scaffolded the haploid genome using an assembly of this long-read sequence. These improvements result in a genome of 795 scaffolds, 275 Mb in length, with an N50 length of 2.1 Mb, an N50 number of 34, and with 99% of the genome placed, and 84% anchored on chromosomes. We use the new genome assembly to confirm that the *Heliconius* genome underwent 10 chromosome fusions since the split with its sister genus *Eueides*, over a period of about 6 million yr.

## KEYWORDS

*Heliconius*  
genome  
assembly  
linkage mapping  
chromosome  
fusions  
*Eueides*

Copyright © 2016 Davey et al.

doi: 10.1534/g3.115.023655

Manuscript received October 14, 2015; accepted for publication January 6, 2016; published Early Online January 15, 2016.

This is an open-access article distributed under the terms of the Creative Commons Attribution 4.0 International License (<http://creativecommons.org/licenses/by/4.0/>), which permits unrestricted use, distribution, and reproduction in any medium, provided the original work is properly cited.

Supporting information is available online at [www.g3journal.org/lookup/suppl/doi:10.1534/g3.115.023655/-/DC1](http://www.g3journal.org/lookup/suppl/doi:10.1534/g3.115.023655/-/DC1)

ENA project accessions: PRJEB11288, ERP005954

Dryad DOI: 10.5061/dryad.3s795

<sup>1</sup>Corresponding authors: Department of Zoology, University of Cambridge, Downing Street, Cambridge, CB2 3EJ, United Kingdom. E-mails: jd626@cam.ac.uk and cj107@cam.ac.uk

<sup>2</sup>Present address: Department of Organismic and Evolutionary Biology, Harvard University, 26 Oxford Street, Cambridge, MA 02138.

<sup>3</sup>Present address: Department of Biology, University of York, York, YO10 5DD, United Kingdom.

Understanding evolution and speciation requires an understanding of genome architecture. Phenotypic variation within a population can be maintained by chromosome inversions (Lowry and Willis 2010; Joron *et al.* 2011; Wang *et al.* 2013), and may lead to species divergence (Noor *et al.* 2001; Feder and Nosil 2009) or to the spread of phenotypes by introgression (Kirkpatrick and Barrett 2015). Genetic divergence and genome composition is affected by variation in recombination rate (Nachman and Payseur 2012; Nam and Ellegren 2012). Gene flow between species can be extensive (Martin *et al.* 2013), and varies considerably across chromosomes (Via and West 2008; Weetman *et al.* 2012).

Describing chromosome inversions, recombination rate variation, and gene flow in full requires as close to chromosomal assemblies of the genomes of study species as possible. Recombination rate varies along chromosomes and is influenced by chromosome length (Fledel-Alon *et al.* 2009; Kawakami *et al.* 2014), and inversions are often hundreds of kilobases to megabases long. However, many draft genomes generated with short-read technologies contain thousands of scaffolds, often

without any chromosomal assignment (Bradnam *et al.* 2013; Michael and VanBuren 2015; Richards and Murali 2015). Where scaffolds are assigned to chromosomes, often a substantial fraction of the genome is left unmapped, and scaffolds are often unordered or unoriented along the chromosomes.

To date, there are nine published Lepidopteran genomes [*Bombyx mori* (Duan *et al.* 2010), *Danaus plexippus* (Zhan *et al.* 2011), *Heliconius melpomene* (Heliconius Genome Consortium 2012), *Plutella xylostella* (You *et al.* 2013), *Melitaea cinxia* (Ahola *et al.* 2014), *Papilio glaucus* (Cong *et al.* 2015a), *Papilio polytes*, *Papilio xuthus* (both Nishikawa *et al.* 2015), and *Lerema accius* (Cong *et al.* 2015b)], and several more available in draft (*Bicyclus anynana*, *Chilo suppressalis*, *Manduca sexta*, and *Plodia interpunctella*; see LepBase version 1.0 at <http://ensembl.lepbase.org>). Of these genomes, only *B. mori*, *H. melpomene*, *P. xylostella*, and *M. cinxia* have scaffolds with chromosome assignments.

The published *H. melpomene* genome (Heliconius Genome Consortium 2012; version 1.1 used throughout, referred to as Hmel1.1) contained 4309 scaffolds (“Hmel1.1”; Figure 1 and Table 1), 1775 of which were assigned to chromosomes based on a linkage map built using 43 RAD-Sequenced F2 offspring (Supplemental Information S4 in Heliconius Genome Consortium 2012). The total length of the genome was 273 Mb, including 4 Mb of gaps, slightly smaller than the estimate of genome size by flow cytometry of 292 Mb  $\pm$  2.4 Mb (Jiggins *et al.* 2005), with 226 Mb (83%) of the genome assigned to chromosomes. The resulting map has been good enough for many purposes, including estimation of introgression of 40% of the genome between *H. melpomene* and *H. cydno* (Martin *et al.* 2013), and identifying breakpoints between *Heliconius*, *M. cinxia*, and *B. mori* (Heliconius Genome Consortium 2012; Ahola *et al.* 2014). However, for understanding these features and mapping inversions and recombinations, Hmel1.1 has several limitations.

The original RAD Sequencing linkage map used to place scaffolds on chromosomes in Hmel1.1 was built using the restriction enzyme PstI (cut site CTGCAG), which cuts sites  $\sim$ 10 kb apart in the *H. melpomene* genome (32% GC content). Scaffolds shorter than 10 kb often did not contain linkage map single nucleotide polymorphisms (SNPs), and could not be placed on chromosomes. Also, misassemblies could be identified, but only corrected to within  $\sim$ 10 kb. With only 43 offspring used in the cross, the average physical distance between recombinations for Hmel1.1 was 320 kb. Scaffolds that could be mapped to a single linkage marker, but not more (and so did not span a recombination), could be placed on the linkage map but could not be anchored. Either only one scaffold would be placed at a single marker, and could not be oriented, or multiple scaffolds would be placed at a single marker, and could not be ordered or oriented. While 226 Mb (83%) of the genome was placed on chromosomes, only 73 Mb (27%) of the genome could be anchored (ordered and oriented). As 17% (46 Mb) of the genome could not be placed on the map, consecutive anchored scaffolds were not joined, as unplaced scaffolds may have been missing in between.

Although the primary Hmel1.1 assembly contained 4309 scaffolds, an additional 8077 scaffolds (69 Mb) were identified as haplotypes and removed from the assembly (Supplemental Information S2.4 in Heliconius Genome Consortium 2012; “Hmel1.1 with haplotypes” in Figure 1 and Table 1). These scaffolds contained 2480 genes, and have been used in several cases to manually bridge primary scaffolds and assemble important regions of the genome (including the Hox cluster, Supplemental Information S10 in Heliconius Genome Consortium 2012). It seemed plausible that the assembly would be improved by better genome-wide incorporation of these haplotype scaffolds, rather than their removal.

Since Hmel1.1 was published, long-read technologies have matured to the point where high coverage with long reads can be used to produce

very high quality assemblies for small or haploid genomes (Berlin *et al.* 2015). Several tools are also available for scaffolding existing genomes with Pacific Biosciences (PacBio) sequence (English *et al.* 2012; Boetzer and Pirovano 2014). However, these methods are limited by requiring single reads to connect scaffolds, whereas it is likely that many gaps sequenced by PacBio sequencing, but missed by Illumina and 454 sequencing (Ross *et al.* 2013), are longer than single reads. An alternative approach is to assemble the PacBio sequence, so that PacBio-unique sequence is retained, and then combine the PacBio assembly with the existing assembly, but tools for doing this have previously been lacking.

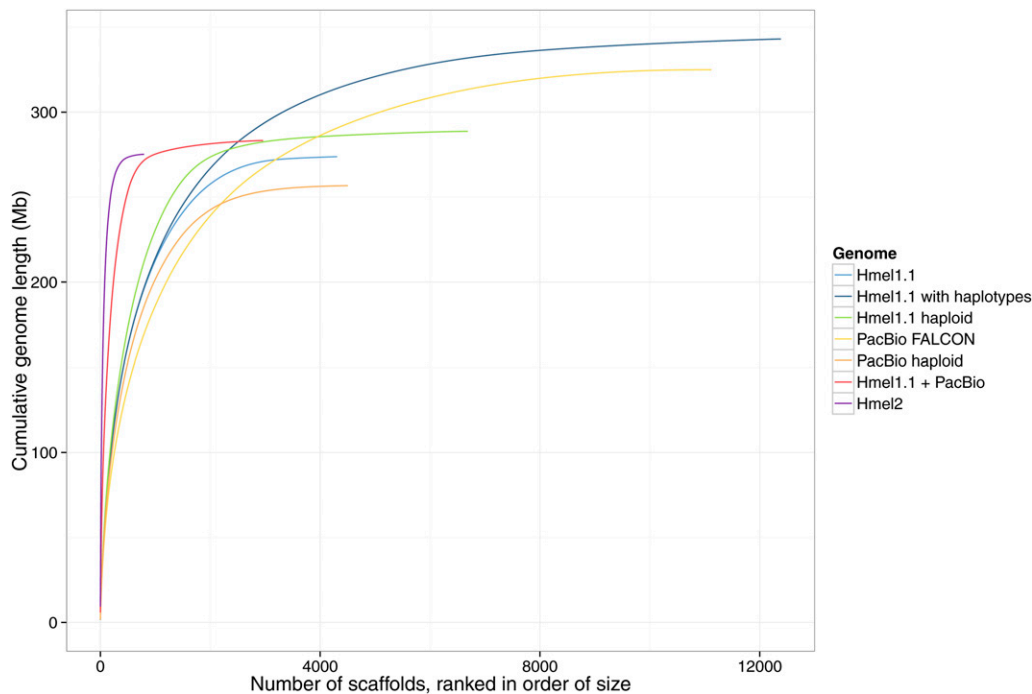
Here, we present Hmel2, the second version of the *H. melpomene* genome, which benefits from the use of three techniques to make substantial improvements to the genome assembly: whole genome sequencing of a pedigree, merging of haplotypic sequence, and incorporation of assembled PacBio sequence into the genome (more details on assembly strategy can be found in Supporting Information, File S1; see Supporting Methods).

We have used Hmel2 to test the hypothesis that the *Heliconius* genome underwent 10 chromosome fusions since *Heliconius* split from the neighboring genus *Eueides* over a period of about 6 million yr. It has been known for several decades that all 11 *Eueides* species have 31 chromosomes, whereas *Heliconius* vary from 21 to 56 (Brown *et al.* 1992). It was previously thought that *Heliconius* gradually lost or fused 10 chromosomes via the *Laparus* and *Neruda* genera, which have chromosome numbers between 20 and 31, and had unresolved relationships with *Eueides* and *Heliconius* (Beltrán *et al.* 2007). However, the most recent molecular taxonomy of the Heliconiini (Kozak *et al.* 2015) places *Laparus* and *Neruda* as clades within *Heliconius*, implying that the ancestral chromosome number of *Heliconius* is 21 and suggesting there are no extant species with intermediate chromosome numbers between *Eueides* and *Heliconius*. The change in chromosome number is due to fusions rather than loss, because the 31 chromosomes of *M. cinxia* can be mapped to the 21 chromosomes of *H. melpomene* (Ahola *et al.* 2014). As *Eueides* butterflies also have 31 chromosomes, it seems most likely that these fusions happened since the split between *Eueides* and *Heliconius*, but this has not yet been confirmed. Here, we use a small pedigree of *Eueides isabella* to test whether fusion points between *Eueides* and *Heliconius* match those between *Melitaea* and *Heliconius*.

## MATERIALS AND METHODS

### Preparation of cross

The cross used to build a linkage map for Hmel2 was the same cross used in the original *H. melpomene* genome project (Supplemental Information section S4 in Heliconius Genome Consortium 2012). A fourth generation male *H. melpomene* from an inbred strain was crossed with a female *H. melpomene rosina* (F0 grandmother) from a laboratory strain, both raised in insectaries in Gamboa, Panama. The male was from the same lineage used to produce the Hmel1.1 genome sequence, to ensure the cross was close to the assembly; the female was from a different subspecies to ensure many SNPs were available for use as markers. Two siblings from this F1 were crossed to produce F2 progeny, many of which were frozen at a larval stage. Where possible, sex was determined from wing morphology of individuals that successfully eclosed. Sex of the larval offspring was determined later using sex-linked markers (identified using offspring with known sexes). DNA from the F0 grandmother (the F0 grandfather was lost), two F1 parents, and 69 of their F2 offspring was extracted using the DNeasy Blood and Tissue Kit (Qiagen). All samples were prepared as 300-bp insert size Illumina TruSeq libraries except for offspring 11, 16, 17, and 18, which were prepared as Nextera libraries due to low DNA quantities. Libraries



**Figure 1** Genome assembly quality. A perfect assembly would appear as an almost straight vertical line. Horizontal plateaus indicate many very small scaffolds. The top right end of each curve shows the number of scaffolds and genome size in the whole assembly. See Table 1 for statistics.

were sequenced using 100-bp paired-end reads on an Illumina HiSeq2500 at the FAS Centre for Systems Biology genomics facility, Harvard University. Samples were sequenced over three HiSeq runs. Sequencing failed during sequencing of the second read for two libraries together containing 24 individuals; these libraries were resequenced, but the first run data were still used, with the second read truncated to 65 bases to include only bases of comparable quality to the first read. This truncation had no effect on the mapping efficiency of these samples (all samples had percentage of mapped reads within 1% of the percentage of mapped reads for the resequenced run).

### Alignment and SNP calling

Reads for parents and offspring were aligned to Hmel1.1 using Stampy (Lunter and Goodson 2011) version 1.0.23 with options `-substitution-rate = 0.01` and `—gatkcgisworkaround` and converted from SAM to BAM format with the SortSam tool from Picard version 1.117 (<http://broadinstitute.github.io/picard>). Reads were aligned to the primary scaffolds (Hmel1-1\_primaryScaffolds.fa), and haplotype scaffolds (Hmel\_haplotype\_scaffolds.fas) separately. Duplicate reads were removed using the Picard MarkDuplicates tool. Indels were realigned using the RealignerTargetCreator and IndelRealigner tools from GATK version 3.2.2 (DePristo *et al.* 2011). SNPs were called for each individual using the GATK HaplotypeCaller and combined into one final VCF file using GATK GenotypeGVCFs with options `—annotateNDA` and `-max_alternate_alleles 30`. Statistics on VCF files (Table A in File S2, and File S3) were calculated using VCFtools v0.1.11 (Danecek *et al.* 2011).

### Linkage map construction from SNPs

Full methods for constructing linkage maps, and reasoning behind the construction strategy can be found in Supporting Methods in File S1 (see also Figure S1). Briefly, SNPs were accepted only if they passed a set of filters, including Mendelian segregation according to a root mean square test (Perkins *et al.* 2011) for a set of valid marker types (Table B in File S2), genotype quality, mapping quality and strand bias. Accepted SNPs were collapsed to a set of maternal and paternal markers. As recombination is absent in *Heliconius* females (Turner

and Sheppard 1975), the maternal markers acted as chromosome prints for each of the 21 *H. melpomene* chromosomes. Paternal markers could then be assigned to chromosomes, where they were colocated with chromosome prints on genome scaffolds. MSTMap (Wu *et al.* 2008) was used to build linkage maps for each chromosome using the paternal markers.

### Preprocessing and fixing misassemblies in Hmel1.1

The primary and haplotype scaffolds of Hmel1.1 were concatenated together into one FASTA file and then repeat masked using RepeatMasker 4.0.5 (Smit *et al.* 2013–2015), with the *H. melpomene* version 1.1 repeat library (Hmel.all.named.final.1-31.lib, Lavoie *et al.* 2013) as input, and with options `-xsmall` and `-no_is`. Candidate misassemblies in Hmel1.1 were identified by detecting discontinuities in linkage map markers across genomic scaffolds, and then manually validated to identify the smallest possible breakpoint based on marker SNPs, including SNPs that were rejected from linkage map construction but could be assigned to one of the two markers around the breakpoint. Long misassembled regions (~5 kb or greater) were retained as separate scaffolds, but most misassembled regions were discarded. Breakpoints that spanned two contigs or contained an entire contig were likely due to scaffolding errors; in these cases the scaffold was broken at the gap. If an entire contig was contained within a breakpoint, with no additional SNP to link it to the markers on either side, it was discarded.

Misassemblies corrected in version 1.1 were also revisited (Supplementary Information S4.6 in Heliconius Genome Consortium 2012). The linkage map used to place scaffolds for version 1.1 was built using RAD Sequencing data, with samples cut with the PstI restriction enzyme. This produces sites roughly 10 kb apart, which meant that many breakpoints were not identified accurately. Each of the misassemblies was reconsidered here, with all of the previously broken scaffolds remerged, and new breakpoints defined based on the whole genome mapping data.

Errors in the linkage map were identified during the merging and reassembly processes described below. A list of linkage map errors was constructed, and erroneous blocks removed and corrected using a script, `clean_errors.py`.

■ Table 1 Statistics for genome assembly versions

Assembly	Length (Mb)	Scaffolds	Scaffold N50 Number	Scaffold N50 Length	Contig N50 Length (kb)
Hmel1.1	273	4309	345	194 kb	51
Hmel1.1 with haplotypes	343	12,386	567	128 kb	33
Hmel1.1 haploid	289	6689	346	214 kb	47
PacBio FALCON	325	11,121	719	96 kb	96
PacBio haploid	256	4565	345	178 kb	178
Hmel1.1 + PacBio	283	2961	113	629 kb	316
Hmel2	275	795	34	2.1 Mb	330

N50 number, number of scaffolds as long as or longer than the N50 length; N50 length, length of scaffold or contig such that 50% of the genome is in scaffolds or contigs of this length or longer.

## Merging genome

HaploMerger version 20120810 (Huang *et al.* 2012) was used to collapse haplotypes in the *H. melpomene* genome. A scoring matrix for LASTZ (as used within HaploMerger) was generated using the lastz\_D\_Wrapper.pl script with `-identity = 94`. This scoring matrix was used for all runs of HaploMerger, including for the PacBio genome (see below). HaploMerger was run with default settings, except for setting `-size = 20` in `all_lastz.ctl`, `targetSize = 5,000,000` and `querySize = 400,000,000` in `hm.batchA.initiation_and_all_lastz`, and `haploMergingMode="updated"` in `hm.batchF.refine_haplomerger_connections_and_Ngap_fillings`.

Several scripts were written to make running HaploMerger easier. The new script `runhm.pl` executes one iteration of HaploMerger, running batch scripts A, B, C, E, F, and G, renaming output scaffolds with a given prefix, producing a final FASTA file concatenating merged scaffolds and unmerged scaffolds, and generating summary statistics (using `summarizeAssembly.py` in PBSuite 14.9.9, <http://sourceforge.net/projects/pb-jelly/>; English *et al.* 2012), and an AGP file for the final FASTA (using bespoke script `agp_from_fasta.py`). The HaploMerger script `hm.batchG.refine_unpaired_sequences` was not used for the initial Hmel1.1 and PacBio assembly merges, retaining all potentially redundant scaffolds in case they could be used for scaffolding later, but it was used to merge the haploid Hmel1.1 assembly with the haploid PacBio assembly. The new script `batchhm.pl` runs `runhm.pl` iteratively until HaploMerger fails to merge any further scaffolds. It also runs a set of additional new scripts, `map_merge.py`, `transfer_merge.py`, and `transfer_features.py`, that document where the original genome parts are in the new genome. The `map_merge.py` script takes HaploMerger output and documents where the input genome scaffolds are in the merged output genome. The `transfer_merge.py` script takes this transfer information and another transfer file, for example between the original version 1.1 *H. melpomene* genome and the input genome, and computes the transfer from the original genome to the output genome. The `transfer_features.py` script then transfers linkage map markers, genes, and misassembly information to the new genome.

HaploMerger sometimes merges scaffolds incorrectly, but has several mechanisms for users to manually edit its output. The `hm.nodes` file, which contains detected overlaps between scaffolds, can be manually annotated, with incorrect merges marked to be rejected. The revised `hm.nodes` file is then passed through the `batchE` script to update the merged scaffolds to ignore the incorrect merges. Incorrect merges in the *Heliconius* genome could be detected by comparing against the linkage map data. A list of scaffolds that should not be merged was constructed over multiple merge attempts, and `runhm.pl` was used to edit the `hm.nodes` and run the `batchE` script automatically.

HaploMerger merges scaffolds based on overlaps, and reports the parts contributing to merged scaffolds in the `hm.new_scaffolds` file, including which of the two overlapping parts has been included in the new genome. These choices sometimes broke genes, whereas choosing the other part would retain the annotated gene. `runhm.pl` can also take a GFF file as input, and check for broken genes in `hm.nodes` and `hm.new_scaffolds`, rejecting nodes if they break manually curated genes, and swapping parts in an overlap if it prevents gene breakage. It then runs the `batchE` and `batchF` to update the merged scaffolds. The Hmel1.1 GFF files (`heliconius_melpomene_v1.1_primaryScaffs_wGeneSymDesc.gff3` and `Hmel1-0_HaplotypeScaffolds.gff`) were concatenated and passed to `runhm.pl` to avoid as many breakages of Hmel1.1 genes as possible.

## Pacific Biosciences sequencing, error correction, and assembly

A pupa from the *H. melpomene* genome strain from Gamboa, Panama was dissected, and DNA extracted using the QIAGEN HMW MagAttract kit. This pupa was taken after four generations of in-breeding, and came from the same generation as the F0 father used to construct the pedigree reported here, and the generation before the individuals used for the genome sequence itself. A Pacific Biosciences (PacBio) SMRTbell 25kb needle sheared library was constructed, size-selected with 0.375x SPRI beads, and sequenced using P4/C2 chemistry (180-min movie).

PacBio subreads were self-corrected with PBcR [in Celera assembly v8.3 (Berlin *et al.* 2015)], run with options `-length 200`, `-genomeSize 292,000,000`, and separately corrected with the original genome strain Illumina (Sequence Read Archive accession SRX124669), 454 shotgun (SRX124544), and 454 3 kb mate-pair (SRX124545) sequencing data (using option `-genomeSize 292,000,000`). Self-corrected and genome-strain-corrected reads were concatenated into one read set, and assembled with FALCON (<https://github.com/PacificBiosciences/falcon>, commit `bb63f20d500efa77f930c373105edb5fbc37d74b`, April 2, 2015) with options `input_type = preads`, `length_cutoff = 500`, `length_cutoff_pr = 500`, `pa_HPCdaligner_option="-v -dal4 -t16 -e.70 -l1000 -s1000"`, `ovlp_HPCdaligner_option="-v -dal32 -t32 -h60 -e.95 -l500 -s1000"`, `pa_DBSplit_option="-x500 -s50"`, `ovlp_DBSplit_option="-x500 -s50"`, `falcon_sense_option="-output_multi-min_idt 0.70-min_cov 4-local_match_count_threshold 2-max_n_read 100-n_core 6"`, `overlap_filtering_setting="-max_diff 40-max_cov 60-min_cov 2-bestn 10"`.

The FALCON assembly was merged iteratively to exhaustion using `batchhm.pl`, as with version 1.1 of the *H. melpomene* genome (see previous section). Misassemblies in the PacBio assembly were identified using the same methods as Hmel1.1, and the merge was repeated several times to remove these misassemblies.



## Scaffolding and gap filling with PacBio assembly

The final, 'haploid' merged Hmel1.1 and PacBio genomes were merged together using runhm.pl. For this final merge, gap filling in hm.batchF.refine\_haplomerger\_connections\_and\_Ngap\_fillings was turned on, and runhm.pl edited hm.new\_scaffolds to always select portions from the Hmel1.1 genome over portions from the PacBio genome, to preserve as much of the Hmel1.1 genome as possible, and use the PacBio genome for scaffolding only. Also, hm.batchG.refine\_unpaired\_sequences was run, and the refined FASTA output used, to remove as many redundant sequences from the resulting merged genome as possible. Finally, runhm.pl was run on the merged Hmel1.1+PacBio genome, to generate a set of nodes for use in scaffolding. Linkage map markers and genes were transferred to this final merged genome with transfer\_features.py.

## Cleaning merged assembly and ordering scaffolds along chromosomes

The Hmel1.1+PacBio merged genome was cleaned and ordered with reference to the linkage map markers. Scaffolds coming from the PacBio assembly alone were removed. If HaploMerger incorporates some portion P of a scaffold S into a merged scaffold, it retains the remaining portions of the scaffold as new scaffolds. These remaining portions were labeled offcuts. Offcuts were removed from the genome if they contained no markers on the linkage map, or if they mapped to the same chromosomal location as the merged scaffold containing their original portion P, assuming that the offcut is part of a haplotype. However, some offcuts that mapped to different chromosomal locations were retained, as they were often long portions of scaffolds that had been misassembled. Scaffolds were also removed if they mapped to a marker that mapped within a larger scaffold that featured surrounding markers; for example, if scaffold A has markers 1,2,3, and scaffold B has marker 2 only, scaffold B was removed as an assumed haplotype.

Scaffolds were ordered along chromosomes based on their linkage markers. Pools of scaffolds were defined as containing one or more scaffold. If a pool contained a single scaffold that bridged multiple consecutive markers, the scaffold could be ordered and oriented, and so was labeled 'anchored'. A pool containing a single scaffold spanning only a single marker could be ordered on the chromosome but not oriented, and so was labeled 'unoriented'. A pool containing multiple scaffolds at a single marker was labeled 'unordered', as the scaffolds could be neither ordered nor oriented against each other.

This order was refined by using the nodes (overlaps between pairs of scaffolds) identified by HaploMerger in the merged Hmel1.1+PacBio genome. HaploMerger does not use all the nodes it identifies, relying on a scoring threshold to reject low-affinity overlaps. While this is sensible when merging over a whole genome, many of these nodes proved to be useful when considering single pools, or neighboring pools, of scaffolds. Scaffolds that had a connecting node in a scaffold in a neighboring pool, which would mean that the scaffold was completely contained in the neighboring scaffold, were removed as likely haplotypes, providing that candidate haplotype scaffolds longer than 10 kb had a percentage alignment > 50%, and candidate haplotype scaffolds shorter than 10 kb had a percentage alignment > 25%. If neighboring scaffolds had an overlapping node at their ends, or were bridged via nodes to a PacBio scaffold, they were ordered and oriented next to each other in the genome, connecting the scaffolds with a 100-bp gap.

Consecutive anchored scaffolds were connected together into one scaffold. This was not done during scaffolding for Hmel1.1, as with only 86% of the genome scaffolded, it was assumed that large scaffolds may have been missing between anchored scaffolds. However, with 98% of

the genome mapped for version 2, it was felt the connection of anchored scaffolds with a gap was reasonable.

After each chromosome was assembled, a set of unmapped scaffolds remained. These scaffolds were retained if they had a maternally informative marker, but no paternally informative marker (and so could be placed on the chromosome but not ordered on it), or if they featured a gene. Otherwise, they were removed from the final genome.

## Annotation transfer

Using transfer\_features.py (see above), the Hmel1.1 gene annotation could be transferred directly to Hmel2. However, this revealed a number of avoidable gene breakages, where a haplotype scaffold had been incorporated in place of a primary scaffold, but the sequence was still the same or similar. CrossMap (version 0.1.8, <http://crossmap.sourceforge.net>) was used to transfer as many remaining annotations by alignment as possible, using HaploMerger to produce a chain map of Hmel1.1 against Hmel2 to use as input to CrossMap.

## Identifying Eueides and Melitaea chromosome fusion points

*E. isabella* subspecies (male dissoluta, female eva) were crossed in insectaries in Tarapoto, Peru. Parents were whole-genome-sequenced, and 21 F1 offspring were RAD sequenced using the PstI restriction enzyme on an Illumina HiSeq 2500. Offspring were separated by barcode using process\_radtags from version 1.30 of Stacks (Catchen *et al.* 2011). Parents and offspring were aligned to Hmel2 using the same alignment pipeline described above except using GATK version 3.4-0, and Picard tools version 1.135. UnifiedGenotyper was used for SNP calling rather than HaplotypeCaller, as HaplotypeCaller does not perform well with RAD sequencing data. SNPs where the father was homozygous, the mother was heterozygous (or, for the Z chromosome, had a different allele to the father), and the offspring all had genotypes, were identified. The resulting segregation patterns were sorted by number of SNPs. The most common segregation patterns and mirrors of these patterns were identified as chromosome prints, as no other patterns appeared at large numbers of SNPs, except for where all offspring were homozygous, or where the patterns were genotyping errors from the chromosome prints. The positions of the SNPs for each chromosome print were then examined to identify fusion points, with clear transitions from one segregation pattern to another visible for all 10 fused chromosomes.

The fusion points in *Heliconius* relative to *M. cinxia* were identified by running HaploMerger on a merge of Hmel2, and the *M. cinxia* version 1 genome superscaffolds (Melitaea\_cinxia\_superscaffolds\_v1.fsa.gz, downloaded from [http://www.helsinki.fi/science/metapop/research/mcgenome2\\_downloads.html](http://www.helsinki.fi/science/metapop/research/mcgenome2_downloads.html) on July 14, 2015). Overlaps (nodes) detected by HaploMerger between Hmel2 scaffolds and *M. cinxia* superscaffolds were used to confirm synteny based on known chromosomal assignments of *M. cinxia* superscaffolds. All fusion points could be identified using this method except for *Heliconius* chromosome 20, which was confirmed using progressiveMauve [as used by Ahola *et al.* (2014) to confirm synteny between *H. melpomene*, *M. cinxia*, and *B. mori*; Mauve version 2.4.0 Linux snapshot 2015-02-13 used, Darling *et al.* 2010)].

## Lepidopteran genome statistics

Lepidopteran genomes were downloaded from LepBase v1.0 (<http://ensembl.lepbase.org>; *B. mori* version GCA\_000151625.1, *L. accius* version 1.1, *M. cinxia* version MelCinx1.0, *P. glaucus* version v1.1, and *P. xylostella* version DBM\_FJ\_v1.1) on October 2, 2015, except

for *D. plexippus* version 3 ([http://monarchbase.umassmed.edu/download/Dp\\_genome\\_v3.fasta.gz](http://monarchbase.umassmed.edu/download/Dp_genome_v3.fasta.gz)), *P. polytes* ([http://papilio.nig.ac.jp/data/Ppolytes\\_genome.fa.gz](http://papilio.nig.ac.jp/data/Ppolytes_genome.fa.gz)), and *P. xuthus* ([http://papilio.nig.ac.jp/data/Pxuthus\\_genome.fa.gz](http://papilio.nig.ac.jp/data/Pxuthus_genome.fa.gz)). Summary statistics were calculated using `summarizeAssembly.py` in PBSuite 14.9.9 (<http://sourceforge.net/projects/pb-jelly/>; English *et al.* 2012), and bespoke script `genome_kb_plot.pl`, used to calculate N50 values and make plots of number of scaffolds against cumulative genome length. BUSCO values were calculated using BUSCO v1.1b1 with the set of 2675 arthropod genes (Simão *et al.* 2015) using generic Augustus parameters.

### Genome size estimation from read alignments

To estimate the number of true bases in the genome, we followed Warr *et al.* (2015) to calculate GC-content-adjusted read depths in 1-kb windows across Hmel2 (details on commands and scripts used can be found in the Dryad and GitHub repositories). BED files containing scaffold positions and gap positions were constructed with Unix tools operating on the Hmel2 scaffold, and chromosome AGP files (in the Hmel2 distribution). Reads for F1 father were aligned to Hmel2 using the alignment pipeline described above (Stampy, MarkDuplicates, IndelRealigner). Windows of 1 kb were constructed using BEDTools `makewindows` [using BEDTools v2.25.0 (Quinlan 2014)]; windows containing gaps were removed using BEDTools `intersect`, and per-base read coverage across Hmel2 for the F1 father was calculated with BEDTools `genomecov` using the `-d` option.

Median read depth and GC content was calculated for each window using bespoke script `calculate_read_depth_gc_windows.py`, ignoring windows shorter than 1 kb. The bespoke script `adjust_read_depth_windows.py` was then used to adjust read depth for each 1-kb window  $w$  by a multiplying factor  $f$ , with  $f$  equal to the ratio of the overall median read depth across all windows, divided by the median read depth of all windows with the same GC percentage as window  $w$ . The same script estimates genome size as the sum across all windows of the number of bases in each window  $w$  multiplied by the GC-adjusted median read depth for  $w$  divided by the genome-wide median read depth.

### Data availability

The Hmel2 genome is available from LepBase v1.0 (<http://ensembl.lepbase.org>). A distribution containing the genome and many supplementary files is available from <http://butterflygenome.org>. Sequence reads from the *H. melpomene* and *E. isabella* crosses are available from the European Nucleotide Archive (ENA), accession PRJEB11288. Pacific Biosciences data are available from ENA accession ERP005954. All bespoke code is available in File S3, and on GitHub at [https://github.com/johnomics/Heliconius\\_melpomene\\_version\\_2](https://github.com/johnomics/Heliconius_melpomene_version_2). A Dryad repository containing the Hmel2 distribution, a frozen version of the GitHub repository, VCF files for the *H. melpomene* and *E. isabella* crosses, marker databases, GC content and read depths for 1-kb windows, and intermediate genome versions for Hmel1-1 and the PacBio assemblies is available at <http://dx.doi.org/10.5061/dryad.3s795>.

## RESULTS

### Whole genome sequence genetic map

A genetic map of a full-sib cross between *H. melpomene melpomene* × *H. melpomene rosina* was constructed to place scaffolds from version Hmel1.1 of the *H. melpomene* genome on to chromosomes. The F0 grandmother, F1 parents, and 69 offspring were whole-genome-sequenced and aligned to Hmel1.1 (Table A in File S2). A total of

17.2 million raw SNPs (12,858,047 aligned to primary scaffolds, and 4,362,732 aligned to haplotype scaffolds) were filtered down to 2.9 million accepted SNPs (2,525,485 aligned to primary scaffolds, and 431,488 aligned to haplotype scaffolds; Figure S2). The accepted SNPs were converted into 919 unique markers (full SNP counts and marker types shown in Table B in File S2; see Supporting Methods in File S1 for further details). Offspring prepared with the Nextera kit were sequenced to a similar standard to offspring prepared with the TruSeq kit (Table A in File S2). The linkage map built from these markers has 21 linkage groups, and a total map length of 1364.23 cM (Figure 2); 2749 of 4309 primary scaffolds, and 4062 of 8077 haplotype scaffolds contained marker SNPs, adding up to 268 Mb (98%) of the primary sequence, and 57 Mb (83%) of the haplotype sequence.

In addition to mapping the majority of the genome sequence to chromosomes, whole genome sequencing of a pedigree allows very accurate detection of crossovers and misassemblies. Identical SNPs could be concatenated into linkage blocks across scaffolds. For example, across the scaffold containing the B/D locus, which controls red patterning in *Heliconius* (Baxter *et al.* 2010; Reed *et al.* 2011; Wallbank *et al.* 2016), six crossovers were called, with an average gap of 344 bp between linkage blocks; a misassembly at the end of the scaffold was called with a gap of 2.9 kb (Figure 3). Across the genome, crossover and misassembly gaps have a mean size of 2.2 kb (SD 3.7 kb), all unmapped regions (crossover and misassembly gaps, unmapped scaffold ends, or whole unmapped scaffolds) have a mean size of 2.5 kb (SD 5.1 kb), whereas mapped regions have a mean size of 28.4 kb (SD 62.7 kb) (see Figure S3 for distributions).

Based on this linkage information, 380 misassemblies were corrected in the genome. This included revisiting the 149 misassemblies fixed for Hmel1.1 (Supplementary Information S4.6 in *Heliconius* Genome Consortium 2012) to more accurately identify the breakpoints for these misassemblies, and fixing 231 newly discovered misassemblies.

### Haplotype merging and scaffolding with PacBio sequencing

The Hmel1.1 primary and haplotype scaffolds were merged together using HaploMerger, iterating nine times until no further scaffolds could be merged, avoiding gene breakages where possible, and reverting merges where they conflicted with the linkage map. This produced a haploid genome containing 6689 scaffolds, length 289 Mb, N50 length 214 kb (“Hmel1.1 haploid”; Figure 1 and Table 1).

A 23x coverage of the *H. melpomene* genome was generated using PacBio sequencing. These sequence reads were error-corrected once using the original Illumina and 454 data from the genome, and again using self-correction (Table C in File S2). The two error-corrected read sets were combined and assembled together using FALCON to produce an initial assembly of 11,121 scaffolds, with N50 length 96 kb and total length 325 Mb (“PacBio FALCON”; Figure 1 and Table 1).

The initial PacBio assembly was merged to itself iteratively using HaploMerger to produce a haploid PacBio assembly (“PacBio haploid”; Figure 1 and Table 1). The haploid Hmel1.1 genome and haploid PacBio genome were then merged using HaploMerger to scaffold the two genomes together. This final merge was checked against the linkage map, and 470 misassemblies in the original PacBio assembly were fixed, requiring the two PacBio merging steps to be repeated several times. The final haploid PacBio genome had 4565 scaffolds, N50 length 178 kb, total length 256 Mb; the Hmel1.1+PacBio merged assembly had 2961 scaffolds, N50 length 629 kb, total length 283 Mb (Figure 1 and Table 1).

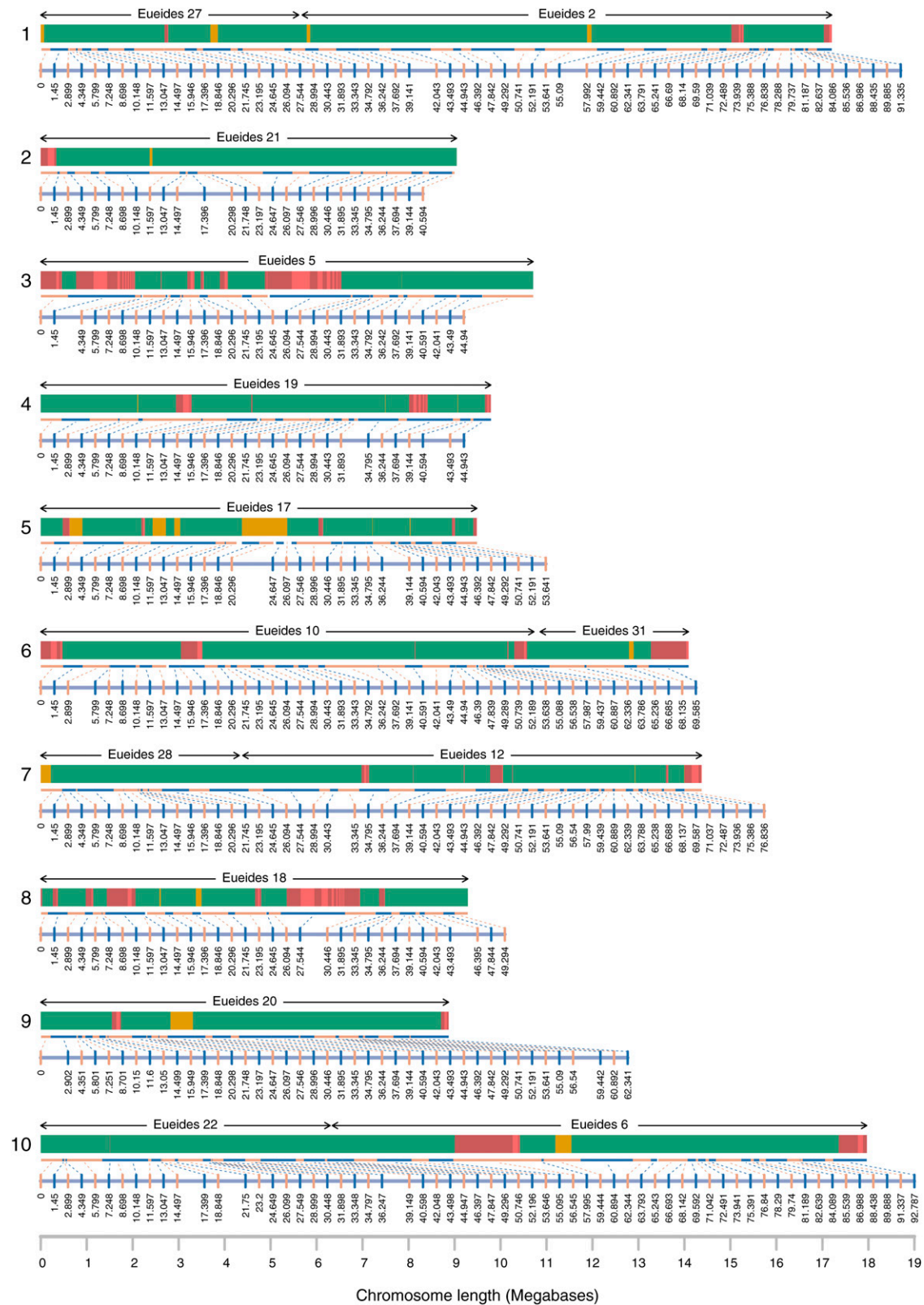
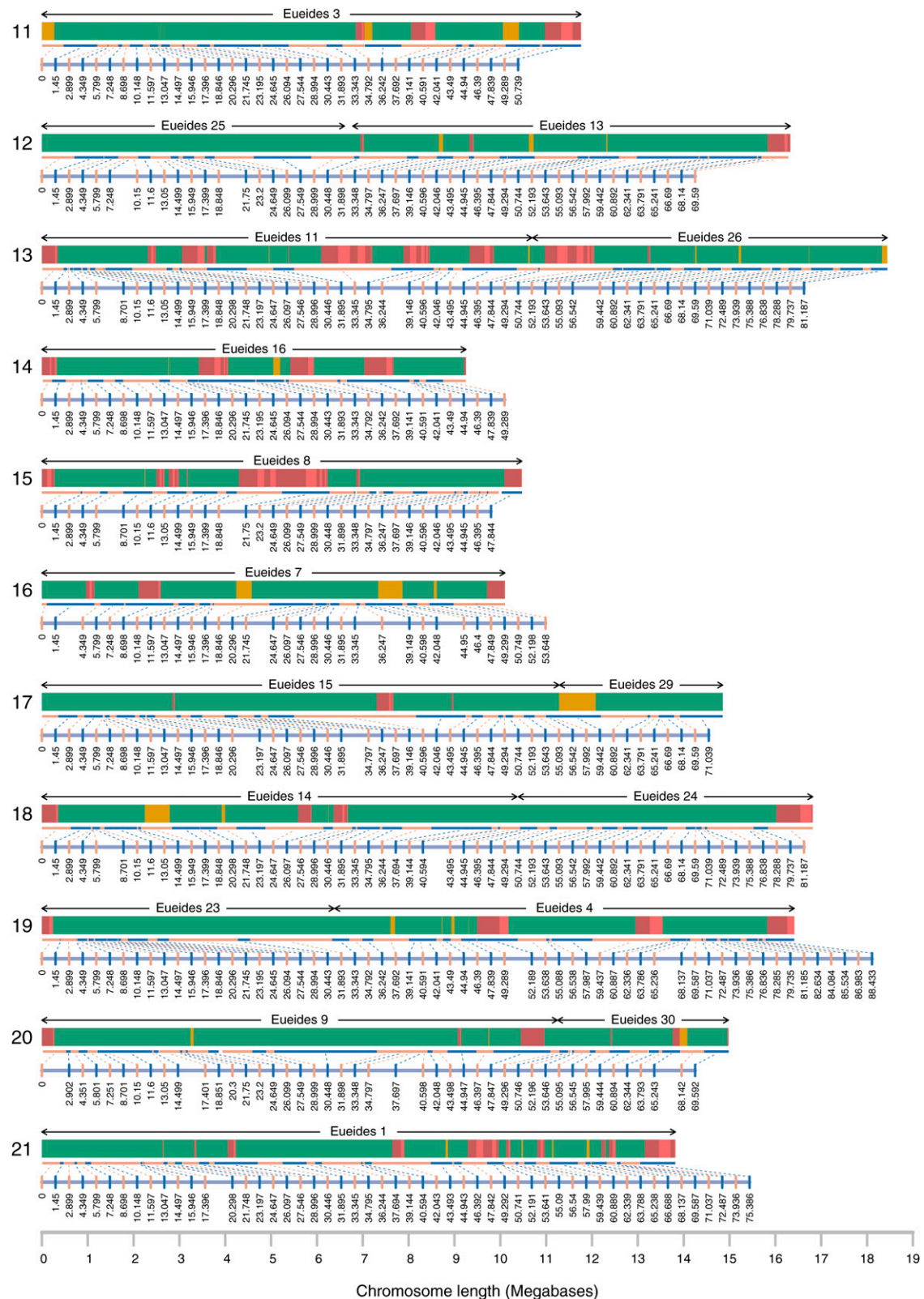


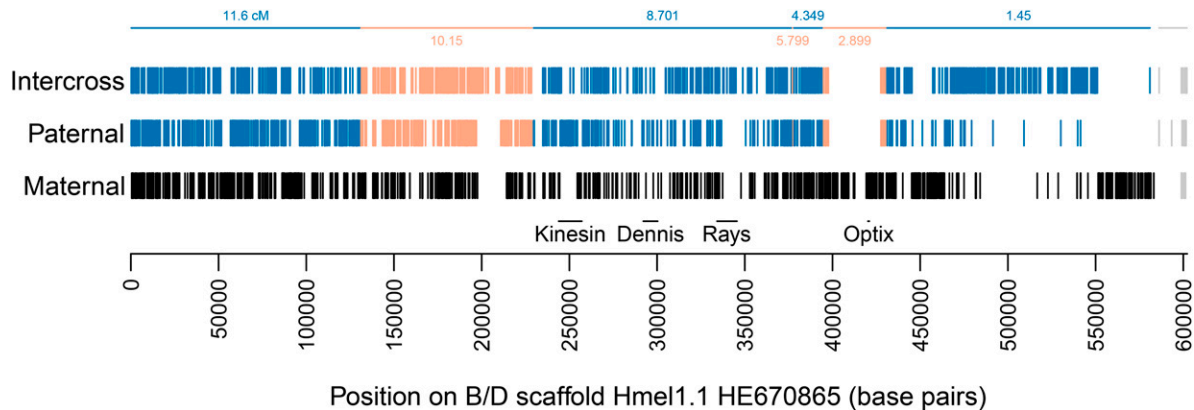
Figure 2 Continued.





**Figure 2** The Hmel2 genome assembly. Chromosome numbers shown on the left. Each chromosome has a genetic map and a physical map. Linkage markers (alternating blue and orange vertical lines) connect to physical ranges for each marker (alternating blue and orange horizontal lines) scaled to maximum chromosome length (x-axis at the bottom of each page). Scaffolds are shown in green (anchored), orange (one unoriented scaffold placed at a marker), and alternating light and dark red (multiple unordered scaffolds placed at one marker). Red scaffolds at each marker are arbitrarily ordered by length. *Eueides* chromosome synteny is shown above each chromosome (see Figure 4).





**Figure 3** SNPs across the B/D locus scaffold for the major marker types Maternal (F1 mother heterozygous, F1 father homozygous), Paternal (F1 father heterozygous, F1 mother homozygous), and Intercross (both F1 parents heterozygous); see Table B in File S2 for marker type details. Kinesin, Dennis, Rays and Optix are major features of the locus (Baxter *et al.* 2010; Reed *et al.* 2011; Wallbank *et al.* 2016). Vertical lines, SNPs; horizontal lines, linkage map marker ranges (cf. Figure 2). SNP colors: black, maternal pattern for chromosome 18; alternating blue and orange, linkage map markers from 1.45 cM to 11.6 cM on chromosome 18 (cf. Figure 2); gray; misassembly, now on chromosome 16.

### Ordering of scaffolds on chromosomes

Linkage information was transferred to the Hmel1.1+PacBio merged assembly, and used to place the resulting scaffolds on chromosomes, anchoring scaffolds wherever possible, connecting consecutive anchored scaffolds, and removing remaining haplotypic scaffolds (see *Materials and Methods* for details). Further scaffolds were joined by searching for connections to PacBio scaffolds unused by HaploMerger during the merge process. This left 641 scaffolds (274 Mb) placed on chromosomes (98.7% of the genome), with a further 869 scaffolds (3.6 Mb) unplaced; 154 (1.1 Mb) of the unplaced scaffolds were retained as they contained genes or had chromosome assignments (but no placement within the chromosome), and the remaining 715 scaffolds (2.5 Mb, 0.9%) were discarded.

### Final assembly quality

The final genome assembly, Hmel2, has 795 scaffolds, length 275.2 Mb, N50 length 2.1 Mb (Figure 1, Figure 2, Table 1, and Table 2), with 231 Mb (84%) anchored, and 274 Mb (99%) placed on chromosomes (Figure S4). This compares well with the other published Lepidopteran genome assemblies to date (Table 2 and Figure S5). BUSCO results (Table 2) indicate that 5% of arthropod BUSCOs (134 out of 2675 genes) are missing in Hmel2. In fact, BUSCO found BLAST and HMMER matches falling below the expected score threshold for all but 11 of these missing BUSCOs (Figure S6). Matches for missing BUSCOs were substantially shorter than complete BUSCOs (mean 31% of expected length, compared to mean 89% of expected length for complete BUSCOs; Figure S7); while these matches may be spurious, it seems likely many of the missing BUSCOs are at least partially present in the assembly.

The final Hmel2 genome size of 275.1 Mb with only 0.98 Mb of gaps is an improvement on Hmel1.1 (total size of 273.7 Mb with 4.1 Mb of gaps), adding 4.5 Mb of sequence to the assembly (Table 2); 246.9 Mb has been carried over from Hmel1.1 directly, with 17.1 Mb added from the haplotype scaffolds, and 11.2 Mb added from PacBio scaffolds. Of the filled Hmel1.1 gaps, the average difference in size between the Hmel1.1 gap and the Hmel2 filled region is mean 75 bp, median -117.5 bp; 62% of gaps have reduced in size, with 38% increased in size (full distribution shown in Figure S8).

Hmel2 is still smaller than the flow cytometry estimate of 292 Mb  $\pm$  2.4 Mb (Jiggins *et al.* 2005). One reason for this

may be collapsed repeats across the genome. To test for this, we attempted to estimate the number of true bases in the genome for the F1 father by calculating the median per base read depth in 1-kb windows across the genome, and genome-wide (see *Materials and Methods* for full details). Assuming the genome-wide median read depth is the true diploid read depth, we adjusted the number of bases represented by each 1-kb window by multiplying 1000 by the ratio of window median read depth to genome-wide median read depth, adjusted for GC content. The sum of the estimates of true bases across the genome was 288.7 Mb, but only 270.9 Mb of the assembly was included in this analysis, as windows shorter than 1 kb, or containing gaps, were removed. Adjusting to the total length of the genome assembly, the estimate of true bases is 293.3 Mb. This is within the range of the flow cytometry estimates, and indicates that most of the missing genome sequence is in collapsed repeats and could be extended with more attention to these areas.

### Improved assembly of major loci

The assembly of major adaptive loci is greatly improved in Hmel2, with all scaffolds containing known adaptive loci substantially extended and most gaps filled. The yellow color pattern locus Yb, previously on a 1.33-Mb scaffold, is now on a 1.96-Mb scaffold; the red pattern BD locus scaffold has increased from 602 kb to 1.89 Mb, and is now gap-free; the K locus, previously spread over two scaffolds totaling 173 kb, is now on a single 3-Mb scaffold; the Ac locus, previously on three scaffolds totaling 838 kb, is now on a single 7.4-Mb scaffold; and the Hox cluster, previously manually assembled into seven scaffolds covering 1.4 Mb (Supplementary Information S10 in *Heliconius* Genome Consortium 2012), is now a single scaffold covering 1.3 Mb, with some misassembled material reassigned elsewhere. Full details of major locus locations in Hmel1.1 and Hmel2 (based on loci from Nadeau *et al.* 2014) can be found in Table D in File S2, with three previously unmapped minor loci now placed on chromosomes.

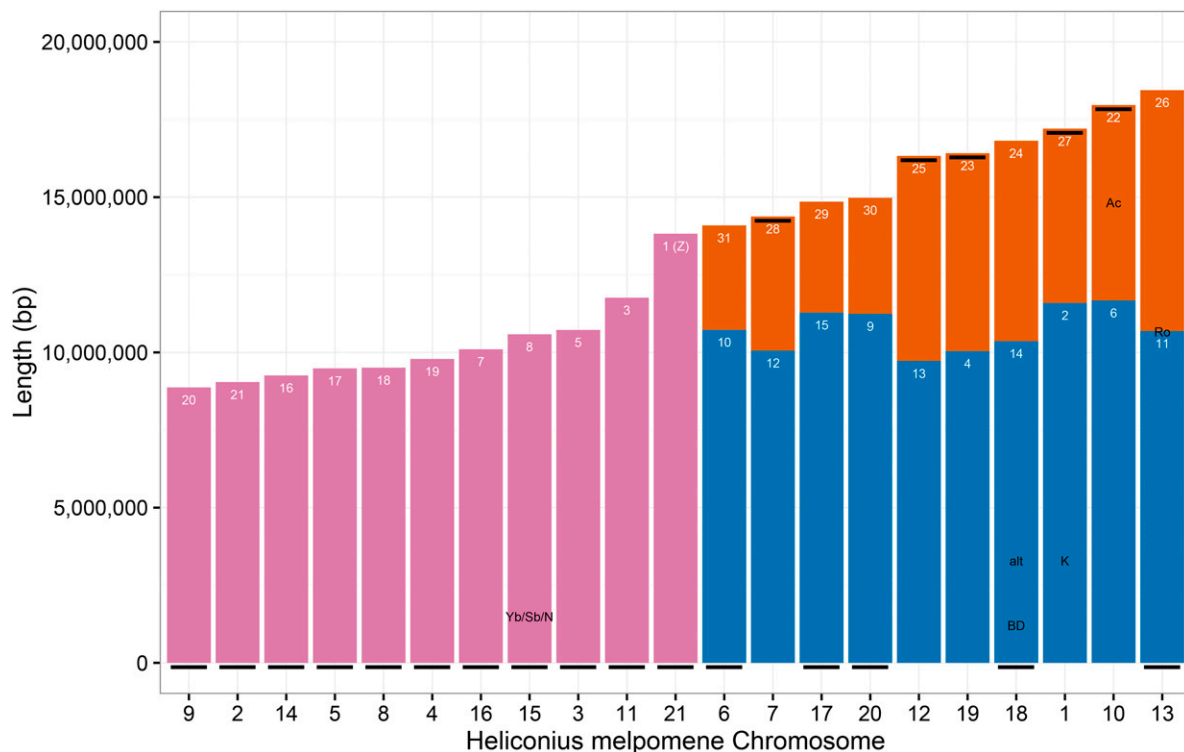
### Chromosome fusions between *Eueides* and *Heliconius*

To identify chromosome fusion points between *Eueides* and *Heliconius*, chromosome prints for the 31 *Eueides* chromosomes were discovered using RAD Sequencing data from an *E. isabella* cross aligned to the Hmel2 genome (Table E in File S2). Synteny between *Heliconius* and *Eueides* is clear on all chromosomes, with 11 unfused and 10 fused

Table 2 Genome assembly statistics for Hmel1.1, Hmel2, and other published Lepidopteran genomes

	Hmel1.1	Hmel2	Bombyx mori	Danaus plexippus	Lerema accius	Melitaea cinxia	Papilio glaucus	Papilio polytes	Papilio xuthus	Plutella xylostella
Scaffolds	4309	795	43,462	5397	29,988	8261	68,029	3873	5572	1819
Total length (bp)	273,786,188	275,198,613	481,803,763	248,564,116	298,173,436	389,907,520	375,987,417	227,005,758	243,890,167	394,062,517
Mean scaffold size (bp)	63,538	346,161	11,085	46,055	9943	47,198	5526	58,612	43,770	216,636
Maximum scaffold size (bp)	1,451,426	9,352,983	16,203,812	6,243,218	3,082,282	668,473	1,977,235	9,881,032	16,292,344	3,493,687
Scaffold N50 size (bp)	194,302	2,102,720	4,008,358	715,606	525,349	119,328	230,299	3,672,263	6,198,915	737,182
Scaffold N90 length (bp)	38,051	273,111	61,147	160,499	60,308	29,598	2022	930,396	533,617	152,088
Scaffold N95 length (bp)	21,864	124,798	928	68,064	1913	16,097	945	417,439	160,478	72,492
Scaffold N50 number	345	34	38	101	160	970	421	21	16	155
Scaffold N90 number	1634	176	258	366	689	3396	7589	63	48	575
Scaffold N95 number	2105	251	5679	483	3385	4263	21,037	81	91	753
Contigs	11,607	3105	87,972	10,545	52,985	45,618	96,532	13,441	10,483	15,764
Mean contig size (bp)	23,231	88,314	4907	22,939	5466	7914	3754	16,239	22,697	24,557
Contig N50 length	51,611	330,037	15,765	113,903	18,018	15,003	12,958	51,561	133,779	59,184
Gaps	7298	2310	44,510	5148	22,997	37,357	28,503	9568	4911	13,945
Total gap length (bp)	4,132,701	981,612	50,083,569	6,664,276	8,535,705	28,877,732	13,599,067	8,725,522	5,949,704	6,937,203
Gap %	1.5	0.4	10.4	2.7	2.9	7.4	3.6	3.8	2.4	1.8
Complete BUSCOs %	81.6	85.5	75.5	87.1	77.7	55.8	75.8	76.7	84.2	75.0
Duplicated BUSCOs %	2.9	3.1	2.2	3.6	2.7	1.7	2.7	2.5	3.1	20.4
Fragmented BUSCOs %	11.1	9.5	16.1	10.1	13.9	20.6	14.6	12.3	8.3	11.8
Missing BUSCOs %	7.3	5.0	8.4	2.8	8.4	23.6	9.6	11.0	7.5	13.2

See Table 1 legend for definitions of N50 length and number. BUSCO (Benchmarking Universal Single-Copy Ortholog) values are based on a set of 2675 arthropod BUSCOs (Simão et al. 2015). Complete and duplicated BUSCOs are included in the count of complete single-copy BUSCOs. See *Materials and Methods* for details of genomes and calculation of statistics.



**Figure 4** Chromosome fusions in *H. melpomene*. Chromosomes of *H. melpomene* ordered by length. Unfused *Heliconius* chromosomes in pink; fused *Eueides/Melitaea* chromosomes in orange and blue, longest chromosome of each pair in blue. *Melitaea* chromosome numbers in white. Black line, beginning of *H. melpomene* chromosome in Hmel2. Black labels, loci known to be associated with color pattern features or altitude (alt) in *H. melpomene* or *H. erato* (Nadeau *et al.* 2014); see Table S4 for details.

*Heliconius* chromosomes (Figure 4). The *Eueides* fusion points all fall within the *Melitaea* fusion points reported by Ahola *et al.* (2014) and confirmed against Hmel2 here (Table F in File S2), indicating that these fusions occurred since the split between *Eueides* and *Heliconius*. Major color pattern loci, and other adaptive loci (Nadeau *et al.* 2014), are not near to fusion points, with the exception of the *H. erato* locus Ro, which is 73 kb away from the chromosome 13 fusion point (Figure 4, and Table D in File S2).

As noted by Ahola *et al.* (2014), the shorter *Melitaea* chromosomes (22–31) are all involved in fusions. The longer *Melitaea* autosome in each fusion pair in *Heliconius* (*Melitaea* 2, 4, 6, 9–15; mean length 10.7 Mb, SD 688 kb) does not, on average, differ substantially in length to unfused autosomes (*Melitaea* 3, 5, 7, 8, 16–21; mean length 9.9 Mb, SD 894 kb). In contrast, the shorter *Melitaea* autosomes in each fusion pair in *Heliconius* (*Melitaea* 22–31) have mean length 5.4 Mb (SD 1.5 Mb), suggesting a bimodal distribution with the long *Melitaea* autosomes, both fused and unfused, clustering together into one group, and the short fused *Melitaea* autosomes clustering into a second group.

## DISCUSSION

### Genome assembly improvements

Many long-range technologies are now available for improvement of existing draft genomes. Deep coverage with long reads can be sufficient for producing almost complete *de novo* assemblies (Berlin *et al.* 2015), and additional technologies such as optical mapping can substantially improve genome scaffolding and identify complex structural variants (Pendleton *et al.* 2015; English *et al.* 2015). However, it remains unclear how well these technologies will work with highly heterozygous nonmodel organisms.

Here, we show that even a small amount of PacBio data (~20x coverage) was sufficient to substantially improve the *H. melpomene* genome. Indeed, the assembly of the PacBio data alone was comparable in quality to our initial draft assembly constructed with Illumina, 454, and mate pair sequencing (Heliconius Genome Consortium 2012; compare lines “Hmel1.1 with haplotypes” and “PacBio FALCON” in Table 1 and Figure 1). We expect that increasing this coverage could have produced a very high quality genome with no additional data.

However, this does not deal with heterozygosity across the genome and the resulting generation of many haplotypic scaffolds—a problem for most species and particularly for insects (Richards and Murali 2015). As sequencing methods improve and true haplotypes can be assembled, it is hoped that full diploid genomes can be produced, and several efforts are already moving toward this (Church *et al.* 2015; <https://github.com/ekg/vg>). We hope that, in the near future, it will be possible to assemble a diploid reference graph for *H. melpomene*, perhaps with the haplotypes reported here. However, as we wanted to preserve contiguity with Hmel1.1, which was already a composite of both haplotypes, Hmel2 remains a composite haploid genome.

HaploMerger has proved to be a very versatile assembly tool. In addition to having many options for varying the merging process, and for manually accepting or rejecting merges, HaploMerger is almost unique among similar tools in reporting where it has placed parts of the original genome in the new genome. This has allowed us to write scripts to transfer linkage map information and genes to new genome versions directly and automatically, without having to map the original genome scaffolds to the new genome separately and possibly erroneously (although we have used this approach to map genes that could not be transferred directly). We could then accept or reject merges where



they introduced misassemblies that conflicted with the linkage map or broke genes, and iterate the use of HaploMerger to collapse as many scaffolds as possible. This allowed us to use HaploMerger to scaffold the existing *Heliconius* genome with our novel PacBio genome, by treating the two 'haploid' genomes as two haplotypes in one diploid genome. We could then modify the HaploMerger output to prefer the original Hm1.1 genome over the PacBio genome, only using the PacBio genome for scaffolding, and so preserve our original assembly and annotation wherever possible.

Hm1.2 is not complete; it does not contain a W chromosome, and no chromosome is assembled into a single scaffold. The incomplete assemblies may be partially due to errors in haplotype merging. The detailed linkage mapping information available for most scaffolds increases our confidence that primary and haplotype scaffolds have been accurately placed, but it may be that merging haplotypes has collapsed or removed some repetitive material. The majority of Hm1.1 gaps filled with haplotypic or PacBio sequence were reduced in size; these filled regions may be correct, but they may also indicate some reduction in repeat copy number. However, over 40% of gaps did increase in size, many substantially (for example, 6% of gaps increased by over 5 kb; see the section *Final assembly quality* in *Results*, and Figure S8). Remaining gaps between scaffolds, and failures to order scaffolds, may be due to incorrect assembly of haplotypes at the ends of scaffolds, or due to genuine incompatibilities between the many individual butterflies that have contributed to the genome sequence, making it impossible to find overlaps or connections between these ends. Several hundred small scaffolds remain in the genome, which are likely to be misassemblies of repetitive elements, but no clear metric could be found that excluded or integrated these scaffolds. However, as the positions of removed haplotypes have been recorded, it may be possible to reintegrate this material with further analysis of particular regions of the genome. Finally, the assembly remains shorter than the flow cytometry estimate of the *H. melpomene* genome size, which appears to be due to collapsing of repetitive material (see the section *Final assembly quality* in *Results*). Further manual inspection of existing data, PCRs across scaffold ends, additional long-read sequencing, or additional cross sequencing or optical mapping will hopefully resolve many of these remaining assembly problems.

### Is *Heliconius* speciation rate driven by chromosome fusions?

Chromosome number varies widely in the Lepidoptera (Robinson 1971), and gradual transitions from one number to another occur frequently. Lepidopteran chromosomes are believed to be holocentric (Wolf 1994), which may make it easier for chromosome fusions and fissions to spread throughout a population (Melters *et al.* 2012). However, the fusion of 20 chromosomes into 10 over 6 million yr (timing based on nodes in figure 1 of Kozak *et al.* 2015) is the largest shift in chromosome number in such a short period across the Lepidoptera (Ahola *et al.* 2014; figure 3A). Also, given the supposed ease of chromosome number transitions, it is unusual that chromosome number in the Nymphalinae and Heliconiinae is stable at 31 and 21 chromosomes respectively for the majority of species, in contrast to all other subfamilies, where chromosome number tends to fluctuate gradually and widely (Ahola *et al.* 2014; figure 3B). While *Heliconius* species do vary in chromosome number, the majority still have 21 chromosomes, with substantial variations only found in derived clades (Brown *et al.* 1992; Kozak *et al.* 2015). It is not just the transition in chromosome number but also the stability of chromosome number before and after the transition that requires explanation.

The difference in chromosome number confirmed here is a major difference between the *Heliconius* and *Eueides* genera, which may make these genera an excellent system for studying macroevolution and speciation. Kozak *et al.* (2015) demonstrated that speciation rate in *Heliconius* is significantly higher than in *Eueides*, but the rate in both genera is more or less stable, and does not obviously relate to geological events or adaptive traits. The difference in chromosome number may contribute to explaining this difference in speciation rate.

Restriction of recombination facilitates speciation in the presence of gene flow (Butlin 2005). One of the major mechanisms for restricting recombination are chromosome inversions, where opposing alleles can become linked together, and then become fixed in different populations (Kirkpatrick and Barton 2006; Farré *et al.* 2013; Kirkpatrick and Barrett 2015). However, other methods of restricting recombination may produce similar effects.

Recombination rate is negatively correlated with chromosome length, although the relationship is complex (Fledel-Alon *et al.* 2009; Kawakami *et al.* 2014). In many species, one obligate crossover is required for successful meiosis, inflating recombination rate in short chromosomes. However, beyond a certain length, recombination rate increases roughly linearly with chromosome length (Kawakami *et al.* 2014). It is unclear whether these relationships will hold in Lepidoptera, which may have no obligate crossovers, as females do not recombine, and meiosis requires the formation of a synaptonemal complex rather than recombination (Wolf 1994).

It is possible that recombination rate along fused chromosomes in *Heliconius* has decreased considerably compared to their shorter, unfused counterparts in *Eueides* (and *Melitaea*), particularly on the shorter chromosomes. This may have enabled linked pairs of divergently selected loci to accrue more easily in *Heliconius* than in *Eueides*, making the process of speciation more likely (Nachman and Payseur 2012; Brandvain *et al.* 2014). This hypothesis could be tested by generating population sequence for *Eueides* species to compare to existing *Heliconius* population data (such as Martin *et al.* 2013), and by modeling speciation rates in the face of different recombination rates. Such a model could predict speciation rate differences between the genera, but full testing would also require the generation of accurate recombination rates in both genera. The system is particularly well suited for testing speciation rate effects because the set of 10 unfused autosomes can act as a control; the hypothesis predicts that recombination rate will not have changed substantially on these chromosomes.

This hypothesis demonstrates the pressing need to generate full, chromosomal genomes for *Eueides* and other *Heliconius* species; genome size in *H. erato* is ~393 Mb (Tobler *et al.* 2005), very similar to *M. cinxia*, but roughly 100 Mb larger than *H. melpomene*. Unpublished draft genome sequences of *Eueides* species, and other *Heliconius* species, suggest genome sizes similar to *H. erato* or larger, with *H. melpomene* being one of the smallest *Heliconius* genomes (data not shown). Measuring recombination rate for other species against the *H. melpomene* genome alone is therefore unlikely to be accurate, and may not allow for accurate model fitting. However, with additional genomes in hand, we believe these genera may provide a useful test case for the influence of genome architecture on speciation and molecular evolution.

### ACKNOWLEDGMENTS

We thank Jenny Barna for computing support. *E. isabella* cross sequencing was carried out by Sylviane Moss at the Gurdon Institute. PacBio sequencing was carried out by Paul Coupland and Richard Durbin at the Sanger Institute, supported by European Research

Council (ERC) grant number 339873, Wellcome Trust grant number 098051, and J.W.D.'s Herchel Smith funding. *H. melpomene* cross sequencing was carried out at the Harvard FAS Center for Systems Biology core facility, and funded by *Biotechnology and Biological Sciences Research Council* grant number G006903/1. *E. isabella* breeding was supported by ERC grant StG-MimEvol, and Agence Nationale de la Recherche grant JCJC-HybEvol. Alignment and SNP calling was performed using the Darwin Supercomputer of the University of Cambridge High Performance Computing Service (<http://www.hpc.cam.ac.uk/>), provided by Dell Inc. using Strategic Research Infrastructure Funding from the Higher Education Funding Council for England, and funding from the Science and Technology Facilities Council. J.W.D. is funded by a Herchel Smith Postdoctoral Research Fellowship.

Author contributions: J.W.D. and C.J. conceived the study. J.W.D. designed the analyses, wrote the software, extracted DNA for PacBio sequencing, and wrote the paper. F.S., K.K.D., and J.M. extracted DNA, prepared libraries, and whole genome sequenced the pedigree. L.M., R.M.M., and S.W.B. bred the *H. melpomene* cross. M.C. and M.J. bred the *Eueides isabella* cross. S.L.B. and R.M.M. extracted DNA and made RAD libraries for the *E. isabella* cross. All authors read and commented on the manuscript.

## LITERATURE CITED

- Ahola, V., R. Lehtonen, P. Somervuo, L. Salmela, P. Koskinen *et al.*, 2014 The Glanville fritillary genome retains an ancient karyotype and reveals selective chromosomal fusions in Lepidoptera. *Nat. Commun.* 5: 4737.
- Baxter, S. W., N. J. Nadeau, L. S. Maroja, P. Wilkinson, B. A. Counterman *et al.*, 2010 Genomic hotspots for adaptation: the population genetics of Müllerian mimicry in the *Heliconius melpomene* clade. *PLoS Genet.* 6: e1000794.
- Beltrán, M., C. D. Jiggins, A. V. Z. Brower, E. Bermingham, and J. Mallet, 2007 Do pollen feeding, pupal-mating and larval gregariousness have a single origin in *Heliconius* butterflies? Inferences from multilocus DNA sequence data. *Biol. J. Linn. Soc. Lond.* 92: 221–239.
- Berlin, K., S. Koren, C.-S. Chin, J. P. Drake, J. M. Landolin *et al.*, 2015 Assembling large genomes with single-molecule sequencing and locality-sensitive hashing. *Nat. Biotechnol.* 33: 623–630.
- Boetzer, M., and W. Pirovano, 2014 SSPACE-LongRead: scaffolding bacterial draft genomes using long read sequence information. *BMC Bioinformatics* 15: 211.
- Bradnam, K. R., J. N. Fass, A. Alexandrov, P. Baranay, M. Bechner *et al.*, 2013 Assemblathon 2: evaluating de novo methods of genome assembly in three vertebrate species. *Gigascience* 2: 1–31.
- Brandvain, Y., A. M. Kenney, L. Flagel, G. Coop, and A. L. Sweigart, 2014 Speciation and introgression between *Mimulus nasutus* and *Mimulus guttatus*. *PLoS Genet.* 10: e1004410.
- Brown, K. S., T. C. Emmel, P. J. Eliazar, and E. Suomalainen, 1992 Evolutionary patterns in chromosome numbers in neotropical Lepidoptera. *Hereditas* 117: 109–125.
- Butlin, R. K., 2005 Recombination and speciation. *Mol. Ecol.* 14: 2621–2635.
- Catchen, J. M., A. Amores, P. Hohenlohe, W. Cresko, and J. H. Postlethwait, 2011 Stacks: building and genotyping loci de novo from short-read sequences. *G3 (Bethesda)* 1: 171–182.
- Church, D. M., V. A. Schneider, K. M. Steinberg, M. C. Schatz, A. R. Quinlan *et al.*, 2015 Extending reference assembly models. *Genome Biol.* 16: 13.
- Cong, Q., D. Borek, Z. Otwinowski, and N. V. Grishin, 2015a Tiger swallowtail genome reveals mechanisms for speciation and caterpillar chemical defense. *Cell Reports* 10: 910–919.
- Cong, Q., D. Borek, Z. Otwinowski, and N. V. Grishin, 2015b Skipper genome sheds light on unique phenotypic traits and phylogeny. *BMC Genomics* 16: 94.
- Danecek, P., A. Auton, G. Abecasis, C. A. Albers, E. Banks *et al.*, 2011 The variant call format and VCFtools. *Bioinformatics* 27: 2156–2158.
- Darling, A. E., B. Mau, and N. T. Perna, 2010 progressiveMauve: Multiple genome alignment with gene gain, loss and rearrangement. *PLoS One* 5: e11147.
- DePristo, M. A., E. Banks, R. Poplin, K. V. Garimella, J. R. Maguire *et al.*, 2011 A framework for variation discovery and genotyping using next-generation DNA sequencing data. *Nat. Genet.* 43: 491–498.
- Duan, J., R. Li, D. Cheng, W. Fan, X. Zha *et al.*, 2010 SilkDB v2.0: a platform for silkworm (*Bombyx mori*) genome biology. *Nucleic Acids Res.* 38: D453–D456.
- English, A. C., S. Richards, Y. Han, M. Wang, V. Vee *et al.*, 2012 Mind the gap: upgrading genomes with Pacific Biosciences RS long-read sequencing technology. *PLoS One* 7: e47768.
- English, A. C., W. J. Salerno, O. A. Hampton, C. Gonzaga-Jauregui, S. Ambreth *et al.*, 2015 Assessing structural variation in a personal genome—towards a human reference diploid genome. *BMC Genomics* 16: 286.
- Farré, M., D. Micheletti, and A. Ruiz-Herrera, 2013 Recombination rates and genomic shuffling in human and chimpanzee—a new twist in the chromosomal speciation theory. *Mol. Biol. Evol.* 30: 853–864.
- Feder, J. L., and P. Nosil, 2009 Chromosomal inversions and species differences: when are genes affecting adaptive divergence and reproductive isolation expected to reside within inversions? *Evolution* 63: 3061–3075.
- Fledel-Alon, A., D. J. Wilson, K. Broman, X. Wen, C. Ober *et al.*, 2009 Broad-scale recombination patterns underlying proper disjunction in humans. *PLoS Genet.* 5: e1000658.
- Heliconius Genome Consortium, 2012 Butterfly genome reveals promiscuous exchange of mimicry adaptations among species. *Nature* 487: 94–98.
- Huang, S., Z. Chen, G. Huang, T. Yu, P. Yang *et al.*, 2012 HaploMerger: reconstructing allelic relationships for polymorphic diploid genome assemblies. *Genome Res.* 22: 1581–1588.
- Jiggins, C. D., J. Mavarez, M. Beltrán, W. O. McMillan, J. S. Johnston *et al.*, 2005 A genetic linkage map of the mimetic butterfly *Heliconius melpomene*. *Genetics* 171: 557–570.
- Joron, M., L. Frezal, R. T. Jones, N. L. Chamberlain, S. F. Lee *et al.*, 2011 Chromosomal rearrangements maintain a polymorphic supergene controlling butterfly mimicry. *Nature* 477: 203–206.
- Kawakami, T., L. Smeds, N. Backström, A. Husby, A. Qvarnström *et al.*, 2014 A high-density linkage map enables a second-generation collared flycatcher genome assembly and reveals the patterns of avian recombination rate variation and chromosomal evolution. *Mol. Ecol.* 23: 4035–4058.
- Kirkpatrick, M., and N. Barton, 2006 Chromosome inversions, local adaptation and speciation. *Genetics* 173: 419–434.
- Kirkpatrick, M., and B. Barrett, 2015 Chromosome inversions, adaptive cassettes and the evolution of species' ranges. *Mol. Ecol.* 24: 2046–2055.
- Kozak, K. M., N. Wahlberg, A. F. E. Neild, K. K. Dasmahapatra, J. Mallet *et al.*, 2015 Multilocus species trees show the recent adaptive radiation of the mimetic *Heliconius* butterflies. *Syst. Biol.* 64: 505–524.
- Lavoie, C. A., R. N. Platt, P. A. Novick, B. A. Counterman, and D. A. Ray, 2013 Transposable element evolution in *Heliconius* suggests genome diversity within Lepidoptera. *Mol. Biol. Evol.* 30: 21.
- Lowry, D. B., and J. H. Willis, 2010 A widespread chromosomal inversion polymorphism contributes to a major life-history transition, local adaptation, and reproductive isolation. *PLoS Biol.* 8: e1000500.
- Lunter, G., and M. Goodson, 2011 Stampy: A statistical algorithm for sensitive and fast mapping of Illumina sequence reads. *Genome Res.* 21: 936–939.
- Martin, S. H., K. K. Dasmahapatra, N. J. Nadeau, C. Salazar, J. R. Walters *et al.*, 2013 Genome-wide evidence for speciation with gene flow in *Heliconius* butterflies. *Genome Res.* 23: 1817–1828.
- Melters, D. P., L. V. Paliulis, I. F. Korf, and S. W. L. Chan, 2012 Holocentric chromosomes: convergent evolution, meiotic adaptations, and genomic analysis. *Chromosome Res.* 20: 579–593.
- Michael, T. P., and R. VanBuren, 2015 Progress, challenges and the future of crop genomes. *Curr. Opin. Plant Biol.* 24: 71–81.

- Nachman, M. W., and B. A. Payseur, 2012 Recombination rate variation and speciation: theoretical predictions and empirical results from rabbits and mice. *Philos. Trans. R. Soc. Lond. B Biol. Sci.* 367: 409–421.
- Nadeau, N. J., M. Ruiz, P. Salazar, B. Counterman, J. A. Medina *et al.*, 2014 Population genomics of parallel hybrid zones in the mimetic butterflies, *H. melpomene* and *H. erato*. *Genome Res.* 24: 1316–1333.
- Nam, K., and H. Ellegren, 2012 Recombination drives vertebrate genome contraction. *PLoS Genet.* 8: e1002680.
- Nishikawa, H., T. Iijima, R. Kajitani, J. Yamaguchi, T. Ando *et al.*, 2015 A genetic mechanism for female-limited Batesian mimicry in *Papilio* butterfly. *Nat. Genet.* 47: 405–409.
- Noor, M. A., K. L. Grams, L. A. Bertucci, and J. Reiland, 2001 Chromosomal inversions and the reproductive isolation of species. *Proc. Natl. Acad. Sci. USA* 98: 12084–12088.
- Pendleton, M., R. Sebra, A. W. C. Pang, A. Ummat, O. Franzen *et al.*, 2015 Assembly and diploid architecture of an individual human genome via single-molecule technologies. *Nat. Methods* 12: 780–786.
- Perkins, W., M. Tygert, and R. Ward, 2011 Computing the confidence levels for a root-mean-square test of goodness-of-fit. *Appl. Math. Comput.* 217: 9072–9084.
- Quinlan, A. R., 2014 BEDTools: The Swiss-Army Tool for Genome Feature Analysis. *Curr. Protoc. Bioinformatics* 47: 11.12.1–11.12.34.
- Reed, R. D., R. Papa, A. Martin, H. M. Hines, B. A. Counterman *et al.*, 2011 Optix drives the repeated convergent evolution of butterfly wing pattern mimicry. *Science* 333: 1137–1141.
- Richards, S., and S. C. Murali, 2015 Best practices in insect genome sequencing: what works and what doesn't. *Curr. Opin. Insect Sci.* 7: 1–7.
- Robinson, R., 1971 *Lepidoptera Genetics*, Pergamon Press, Oxford.
- Ross, M. G., C. Russ, M. Costello, A. Hollinger, N. J. Lennon *et al.*, 2013 Characterizing and measuring bias in sequence data. *Genome Biol.* 14: R51.
- Simão, F. A., R. M. Waterhouse, P. Ioannidis, E. V. Kriventseva, and E. M. Zdobnov, 2015 BUSCO: assessing genome assembly and annotation completeness with single-copy orthologs. *Bioinformatics* 31: 3210–3212.
- Smit, A. F. A., Hubley, R., and Green, P., 2013–2015 RepeatMasker Open-4.0. <http://www.repeatmasker.org>. Accessed: 4 February 2016.
- Tobler, A., D. Kapan, N. S. Flanagan, C. Gonzalez, E. Peterson *et al.*, 2005 First-generation linkage map of the warningly colored butterfly *Heliconius erato*. *Heredity* 94: 408–417.
- Turner, J. R. G., and P. M. Sheppard, 1975 Absence of crossing-over in female butterflies (*Heliconius*). *Heredity* 34: 265–269.
- Via, S., and J. West, 2008 The genetic mosaic suggests a new role for hitchhiking in ecological speciation. *Mol. Ecol.* 17: 4334–4345.
- Wallbank, R. W. R., S. W. Baxter, C. Pardo-Diaz, J. J. Hanly, S. H. Martin *et al.*, 2016 Evolutionary Novelty in a Butterfly Wing Pattern through Enhancer Shuffling. *Plos. Biol.* 14: e1002353.
- Wang, J., Y. Wurm, M. Nipitwattanaphon, O. Riba-Grognuz, Y.-C. Huang *et al.*, 2013 A Y-like social chromosome causes alternative colony organization in fire ants. *Nature* 493: 664–668.
- Warr, A., C. Robert, D. Hume, A. L. Archibald, N. Deeb *et al.*, 2015 Identification of low-confidence regions in the pig reference genome (Sscrofa10.2). *Front. Genet.* 6: 217.
- Weetman, D., C. S. Wilding, K. Steen, J. Pinto, and M. J. Donnelly, 2012 Gene flow-dependent genomic divergence between *Anopheles gambiae* M and S forms. *Mol. Biol. Evol.* 29: 279–291.
- Wolf, K. W., 1994 The unique structure of Lepidopteran spindles. *Int. Rev. Cytol.* 152: 1–48.
- Wu, Y., P. R. Bhat, T. J. Close, and S. Lonardi, 2008 Efficient and accurate construction of genetic linkage maps from the minimum spanning tree of a graph. *PLoS Genet.* 4: e1000212.
- You, M., Z. Yue, W. He, X. Yang, G. Yang *et al.*, 2013 A heterozygous moth genome provides insights into herbivory and detoxification. *Nat. Genet.* 45: 220–225.
- Zhan, S., C. Merlin, J. L. Boore, and S. M. Reppert, 2011 The monarch butterfly genome yields insights into long-distance migration. *Cell* 147: 1171–1185.

Communicating editor: S. I. Wright